

LP 12 Hex

Light Efficiency:

53 Lumen/Watt

Light Quality:

CRI: 77.0

Color Temperature:

7342 K

Output: 653 lm

Peak: 4175 cd

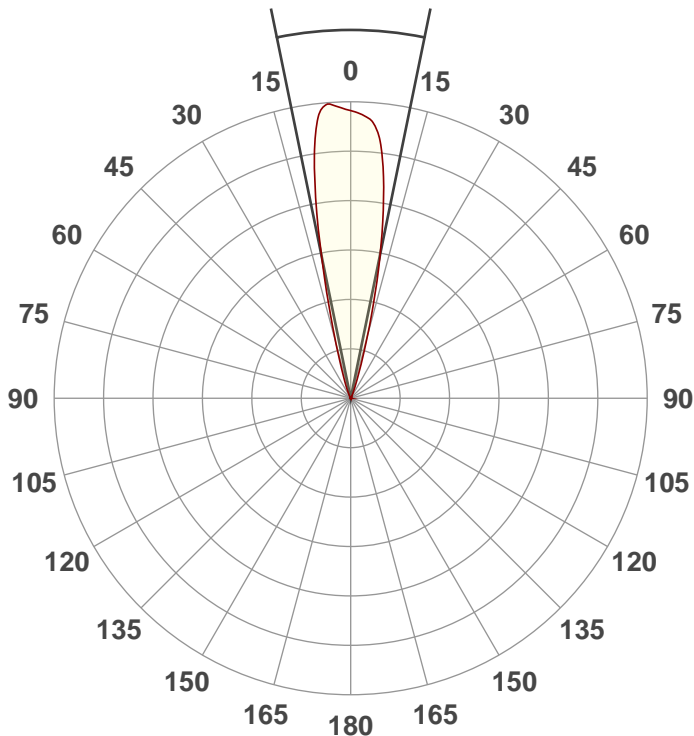
Power: 12.2 W

PF: 0.5



Beam Angle

23.1°



Product Name:

LP 12 Hex

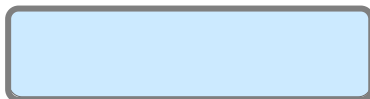
Test:

White

Date:

9/12/2019

Note:



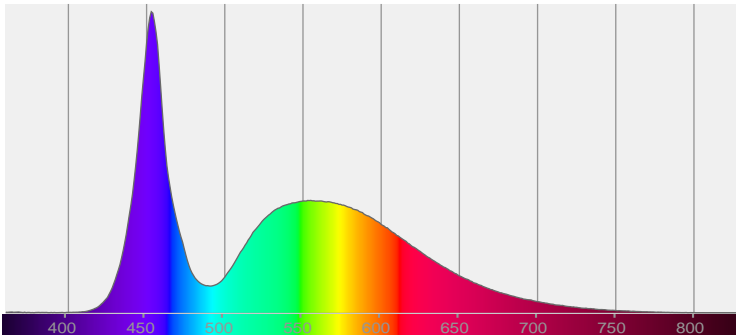
CIE 1931

x: 0.304

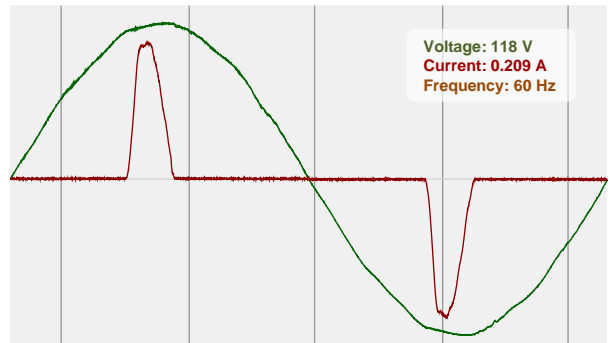
y: 0.305

Spectra

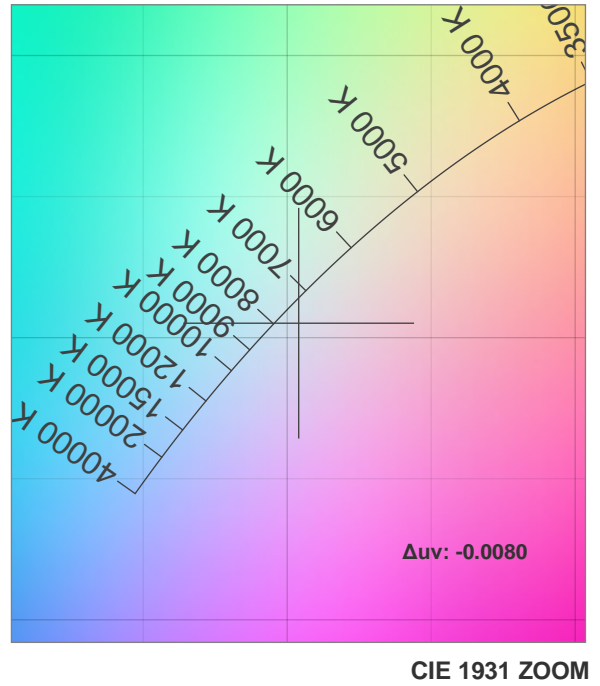
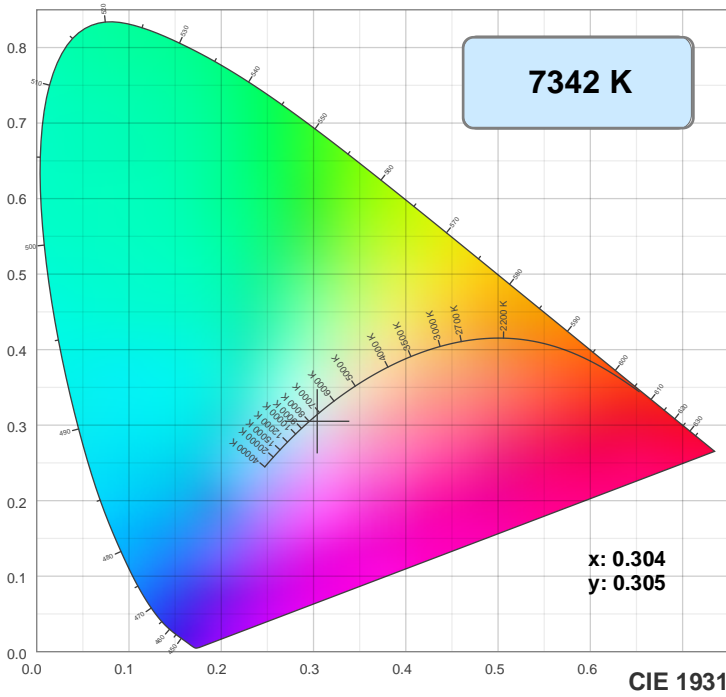
Dominant Wavelength: 360nm



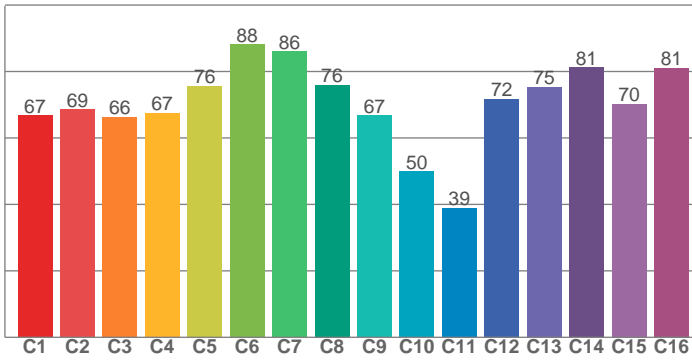
Power



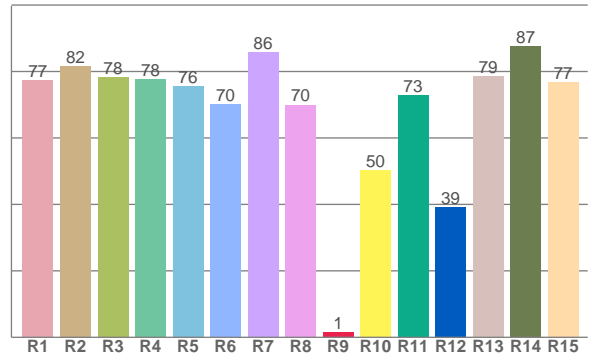
Color Details



TM30: 70.2



CRI: 77.0 (R1-R8)



CRI R values, only R1-R8 are used to calculate final CRI value

R1	R2	R3	R4	R5	R6	R7	R8	R9	R10	R11	R12	R13	R14	R15
77.3	81.7	78.3	77.6	75.6	70.1	85.7	70.0	1.5	50.4	72.7	39.2	78.6	87.5	76.8

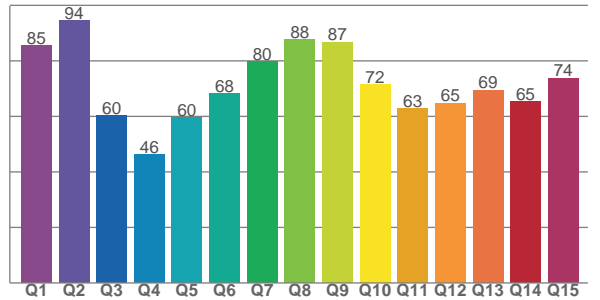
TM30 C values, 16 binned values out of total of 99 C values

C1	C2	C3	C4	C5	C6	C7	C8	C9	C10	C11	C12	C13	C14	C15	C16
66.7	68.5	66.3	67.5	75.7	88.2	86.0	75.9	66.8	49.9	38.9	71.8	75.4	81.2	70.2	81.0

CQS Q values

Q1	Q2	Q3	Q4	Q5	Q6	Q7	Q8	Q9	Q10	Q11	Q12	Q13	Q14	Q15
85.5	94.4	60.2	46.3	59.6	68.2	79.8	87.6	86.7	71.5	62.8	64.7	69.4	65.3	73.7

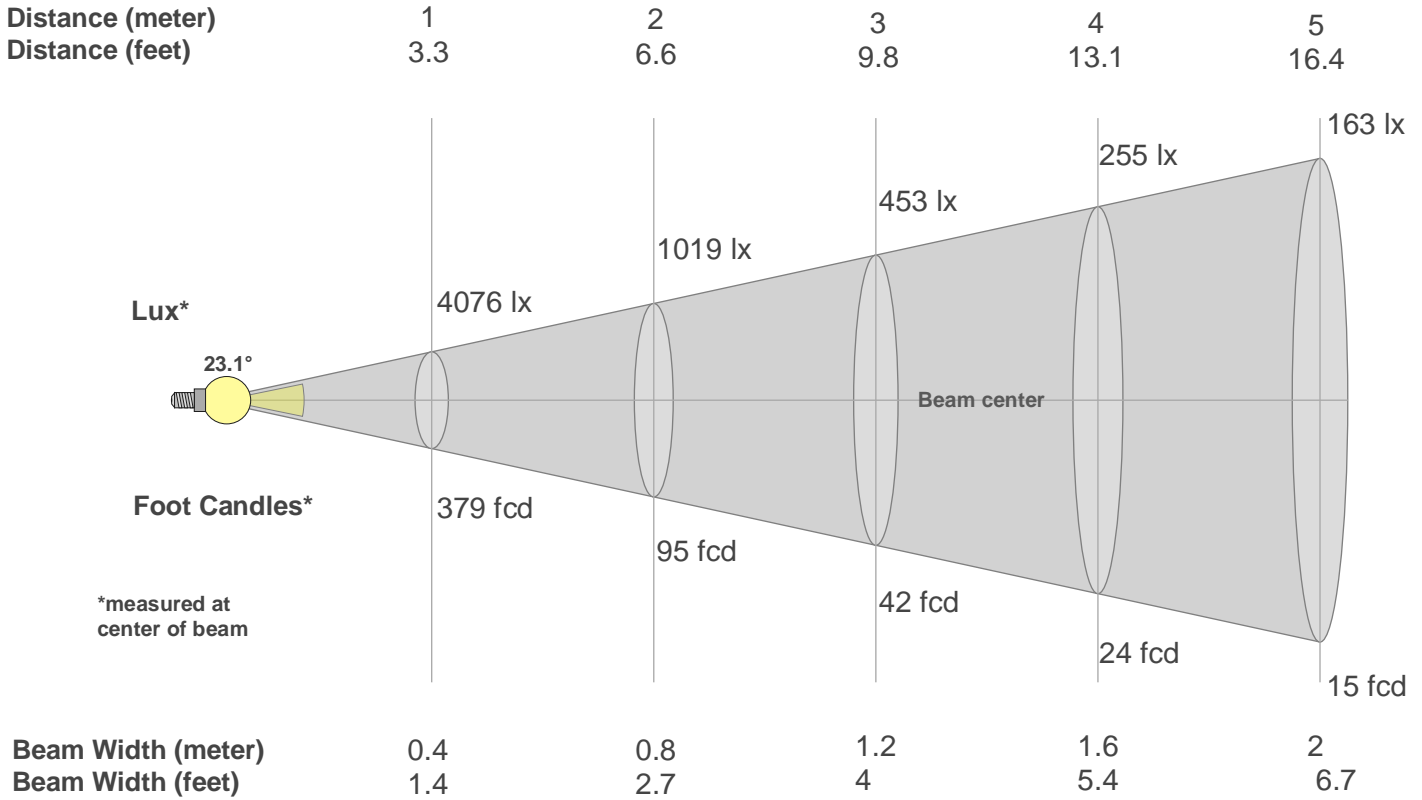
CQS: 69.0



Color Parameters

Color Temperature	Color Rendering Index	Red Component	Color Fidelity	Color Gamut	Color Quality Scale	Color Coordinate CIE 1931	Color Coordinate CIE 1931	Color Coordinate	Color Coordinate	Color Deviation from Black Body
CCT	CRI	CRI R9	TM30 Rf	TM30 Rg	CQS	x	y	u	v	Δuv
7342 K	77.0	1.5	70.2	92.5	69.0	0.304	0.305	0.201	0.302	-0.0080

Beam Details



Beam Intensities from 1-20m

m	1	2	3	4	5	6	7	8	9	10	11	12	13	14	15	16	17	18	19	20
ft	3.3	6.6	9.8	13.1	16.4	19.7	23	26.2	29.5	32.8	36.1	39.4	42.7	45.9	49.2	52.5	55.8	59.1	62.3	65.6
lx	4076	1019	453	255	163	113	83	64	50	41	34	28	24	21	18	16	14	13	11	10
fcd	378.7	94.7	42.1	23.7	15.1	10.5	7.7	5.9	4.7	3.8	3.1	2.6	2.2	1.9	1.7	1.5	1.3	1.2	1	0.9

Intensities in 0° C-plane

0°	1°	2°	3°	4°	5°	6°	7°	8°	9°	10°	11°	12°	13°	14°	15°	16°	17°	18°	19°
4076	4095	4121	4146	4163	4152	4062	3901	3620	3264	2830	2364	1876	1471	1097	838	598	466	344	277
100%	100%	101%	102%	102%	102%	100%	96%	89%	80%	69%	58%	46%	36%	27%	21%	15%	11%	8%	7%

Intensities in 90° C-plane

0°	1°	2°	3°	4°	5°	6°	7°	8°	9°	10°	11°	12°	13°	14°	15°	16°	17°	18°	19°
4076	4095	4121	4146	4163	4152	4062	3901	3620	3264	2830	2364	1876	1471	1097	838	598	466	344	277
100%	100%	101%	102%	102%	102%	100%	96%	89%	80%	69%	58%	46%	36%	27%	21%	15%	11%	8%	7%

Intensities in 180° C-plane

0°	1°	2°	3°	4°	5°	6°	7°	8°	9°	10°	11°	12°	13°	14°	15°	16°	17°	18°	19°
4076	4056	4028	3996	3948	3871	3738	3545	3284	2978	2640	2289	1933	1581	1231	954	687	518	363	276
100%	100%	99%	98%	97%	95%	92%	87%	81%	73%	65%	56%	47%	39%	30%	23%	17%	13%	9%	7%

Intensities in 270° C-plane

0°	1°	2°	3°	4°	5°	6°	7°	8°	9°	10°	11°	12°	13°	14°	15°	16°	17°	18°	19°
4076	4056	4028	3996	3948	3871	3738	3545	3284	2978	2640	2289	1933	1581	1231	954	687	518	363	276
100%	100%	99%	98%	97%	95%	92%	87%	81%	73%	65%	56%	47%	39%	30%	23%	17%	13%	9%	7%

Beam Angle 50%	Field Angle 10%	Cutoff Angle 2,5%	Intensity Ratio in 120° Cone	Intensity Ratio in 90° Cone
23.1°	35°	45.6°	100.0%	100.0%