

# COB CANNON LP200ST



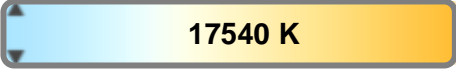
Light Efficiency:



Light Quality:



Color Temperature:



Output: 4027 lm

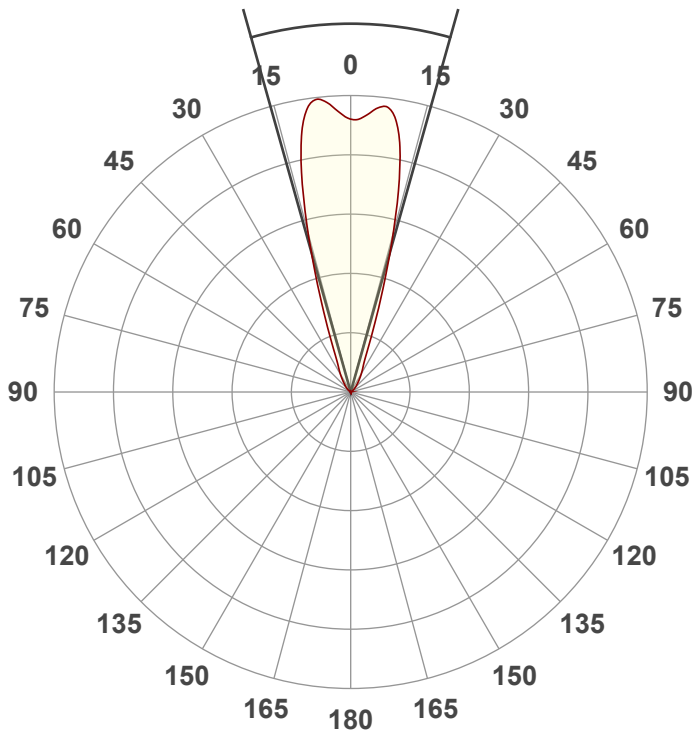
Peak: 11630 cd

Power: 205.8 W

PF: 0.98

Beam Angle

31.4°



Test:  
Full On 50deg Fresnel

Date:  
9/12/2022

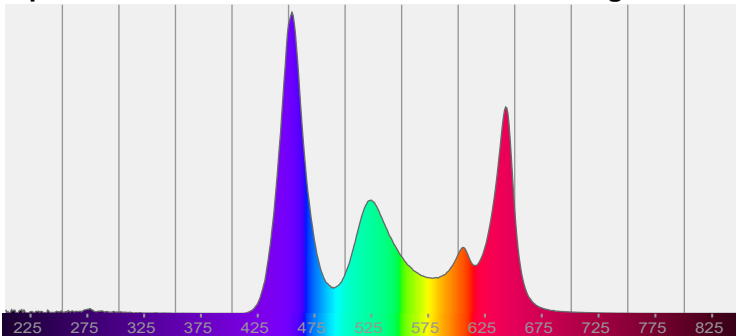
Note:



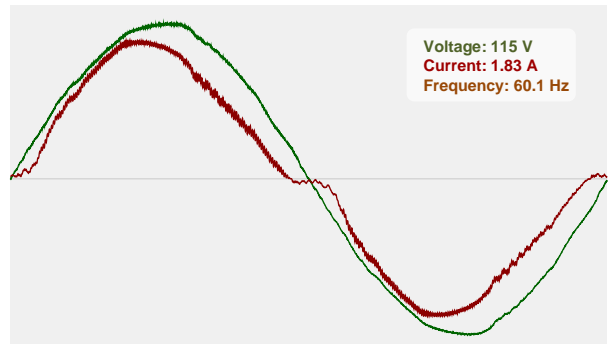
CIE 1931  
x: 0.277  
y: 0.242

Spectra

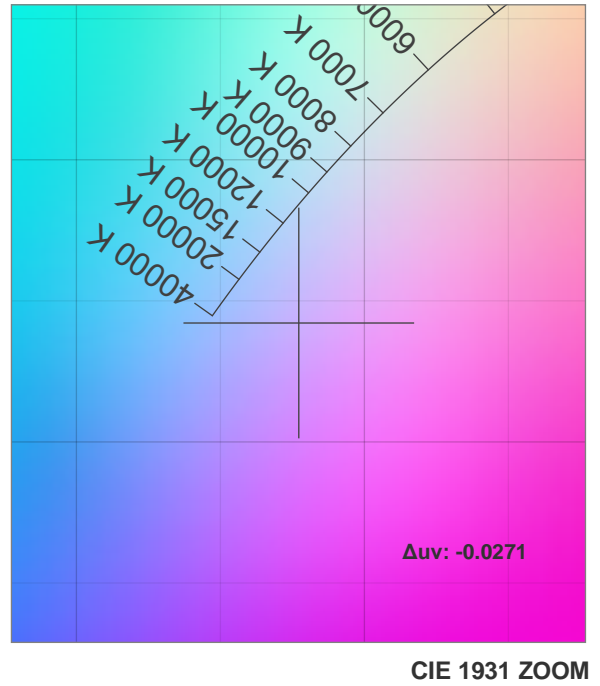
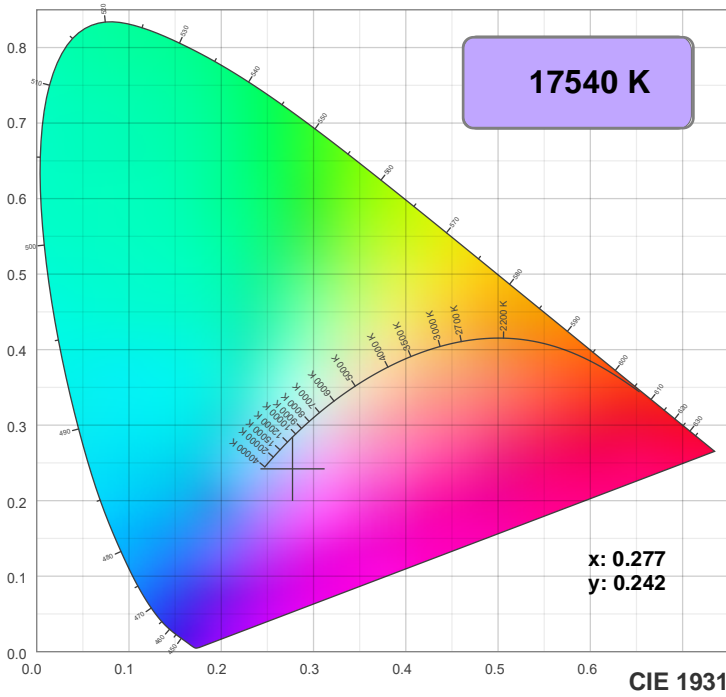
Dominant Wavelength: 360nm



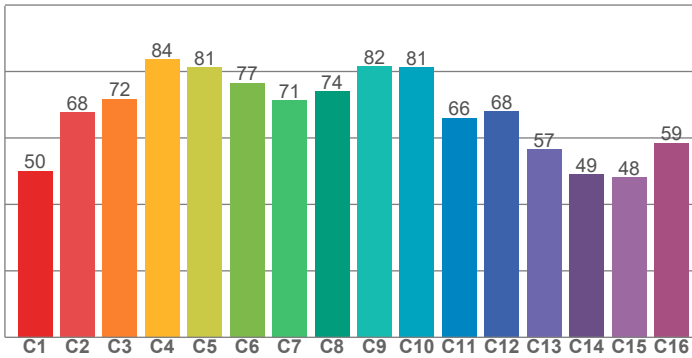
Power



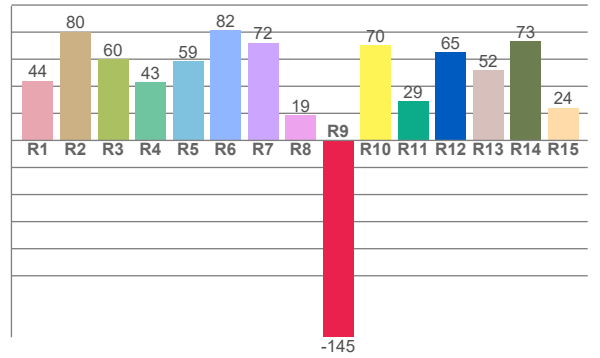
# Color Details



**TM30: 70.5**



**CRI: 57.3 (R1-R8)**



**CRI R values, only R1-R8 are used to calculate final CRI value**

R1	R2	R3	R4	R5	R6	R7	R8	R9	R10	R11	R12	R13	R14	R15
44.1	80.3	59.8	43.2	58.5	81.6	72.2	18.6	-145.5	70.2	29.0	64.9	52.0	73.4	24.2

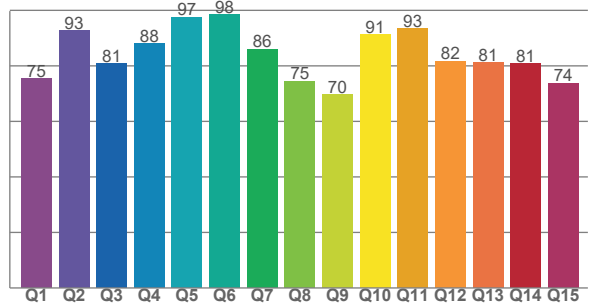
**TM30 C values, 16 binned values out of total of 99 C values**

C1	C2	C3	C4	C5	C6	C7	C8	C9	C10	C11	C12	C13	C14	C15	C16
50.1	67.7	71.7	83.7	81.3	76.5	71.4	74.0	81.6	81.3	66.0	68.0	56.5	49.0	48.1	58.5

**CQS Q values**

Q1	Q2	Q3	Q4	Q5	Q6	Q7	Q8	Q9	Q10	Q11	Q12	Q13	Q14	Q15
75.4	92.8	80.8	88.0	97.5	98.5	86.0	74.5	69.6	91.2	93.3	81.7	81.1	80.9	73.7

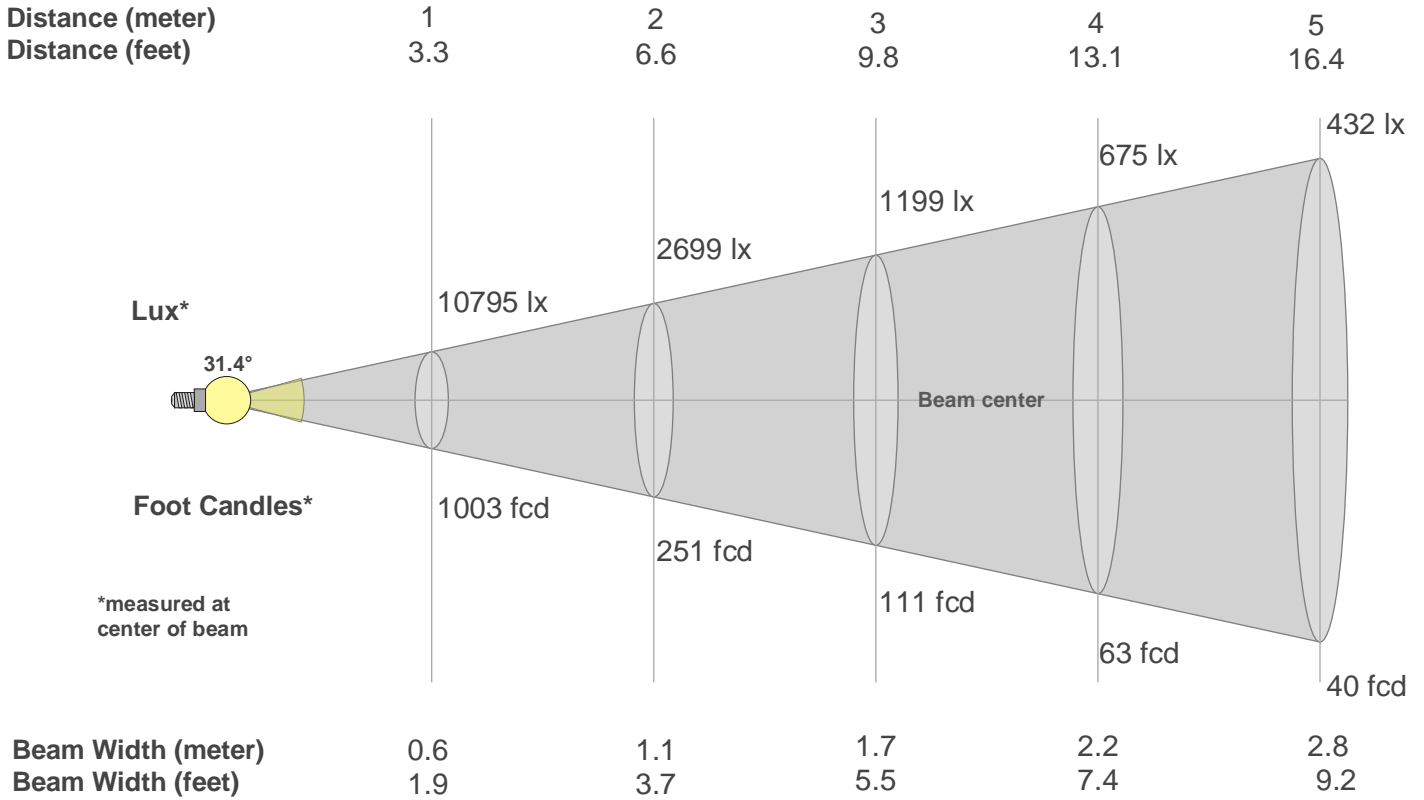
**CQS: 82.1**



## Color Parameters

Color Temperature	Color Rendering Index	Red Component	Color Fidelity	Color Gamut	Color Quality Scale	Color Coordinate CIE 1931	Color Coordinate CIE 1931	Color Coordinate	Color Coordinate	Color Deviation from Black Body
CCT	CRI	CRI R9	TM30 Rf	TM30 Rg	CQS	x	y	u	v	$\Delta uv$
17540 K	57.3	-145.5	70.5	119.4	82.1	0.277	0.242	0.207	0.271	-0.0271

# Beam Details



## Beam Intensities from 1-20m

m	1	2	3	4	5	6	7	8	9	10	11	12	13	14	15	16	17	18	19	20
ft	3.3	6.6	9.8	13.1	16.4	19.7	23	26.2	29.5	32.8	36.1	39.4	42.7	45.9	49.2	52.5	55.8	59.1	62.3	65.6
lx	10795	2699	1199	675	432	300	220	169	133	108	89	75	64	55	48	42	37	33	30	27
fcd	1002.9	250.7	111.4	62.7	40.1	27.9	20.5	15.7	12.4	10	8.3	7	5.9	5.1	4.5	3.9	3.5	3.1	2.8	2.5

## Intensities in 0° C-plane

0°	2°	4°	6°	8°	10°	12°	14°	16°	18°	20°	22°	24°	26°	28°	30°	32°	34°	36°	38°
10.8K	11.0K	11.3K	11.6K	11.4K	10.7K	9.4K	7.5K	5.5K	3.8K	2.6K	1.8K	1.3K	1.1K	0.9K	0.8K	0.7K	0.6K	0.5K	0.4K
100%	102%	105%	107%	106%	99%	87%	69%	51%	35%	24%	17%	12%	10%	9%	8%	6%	5%	5%	4%

## Intensities in 90° C-plane

0°	2°	4°	6°	8°	10°	12°	14°	16°	18°	20°	22°	24°	26°	28°	30°	32°	34°	36°	38°
10.8K	11.0K	11.3K	11.6K	11.4K	10.7K	9.4K	7.5K	5.5K	3.8K	2.6K	1.8K	1.3K	1.1K	0.9K	0.8K	0.7K	0.6K	0.5K	0.4K
100%	102%	105%	107%	106%	99%	87%	69%	51%	35%	24%	17%	12%	10%	9%	8%	6%	5%	5%	4%

## Intensities in 180° C-plane

0°	2°	4°	6°	8°	10°	12°	14°	16°	18°	20°	22°	24°	26°	28°	30°	32°	34°	36°	38°
10.8K	10.8K	11.1K	11.3K	11.2K	10.6K	9.3K	7.5K	5.5K	3.8K	2.6K	1.8K	1.3K	1.1K	1.0K	0.8K	0.7K	0.6K	0.5K	0.4K
100%	100%	102%	104%	104%	98%	86%	69%	51%	35%	24%	16%	12%	10%	9%	8%	7%	6%	5%	4%

## Intensities in 270° C-plane

0°	2°	4°	6°	8°	10°	12°	14°	16°	18°	20°	22°	24°	26°	28°	30°	32°	34°	36°	38°
10.8K	10.8K	11.1K	11.3K	11.2K	10.6K	9.3K	7.5K	5.5K	3.8K	2.6K	1.8K	1.3K	1.1K	1.0K	0.8K	0.7K	0.6K	0.5K	0.4K
100%	100%	102%	104%	104%	98%	86%	69%	51%	35%	24%	16%	12%	10%	9%	8%	7%	6%	5%	4%

Beam Angle 50%	Field Angle 10%	Cutoff Angle 2,5%	Intensity Ratio in 120° Cone	Intensity Ratio in 90° Cone
31.4°	50.9°	86.3°	99.8%	96.0%