

COB CANNON LP200ST



Light Efficiency:



Light Quality:



Color Temperature:



Output: 3025 lm

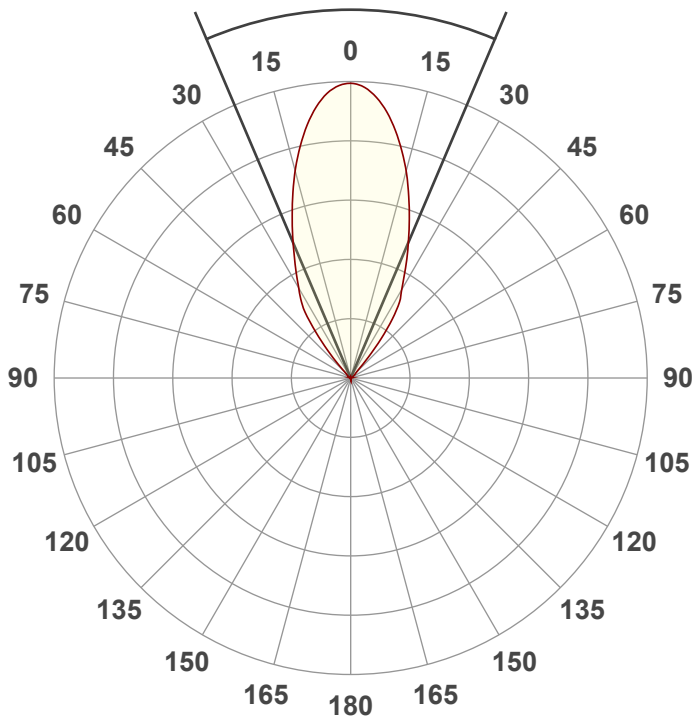
Peak: 4350 cd

Power: 111.8 W

PF: 0.99

Beam Angle

46.1°



Test:

CRI

Date:

9/9/2022

Note:

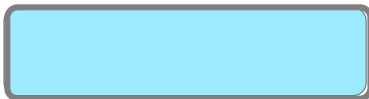
R @ 61

G @ 175

B @ 120

A @ 255

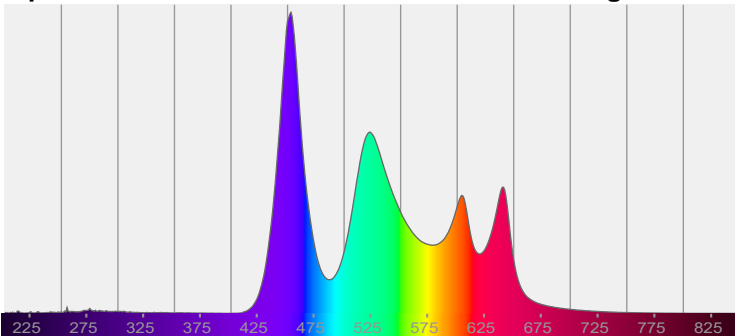
L @ 255



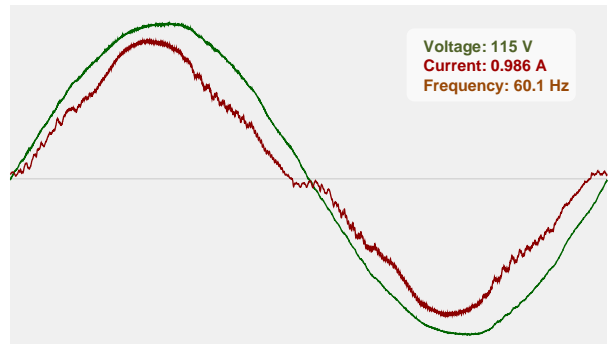
CIE 1931
x: 0.285
y: 0.308

Spectra

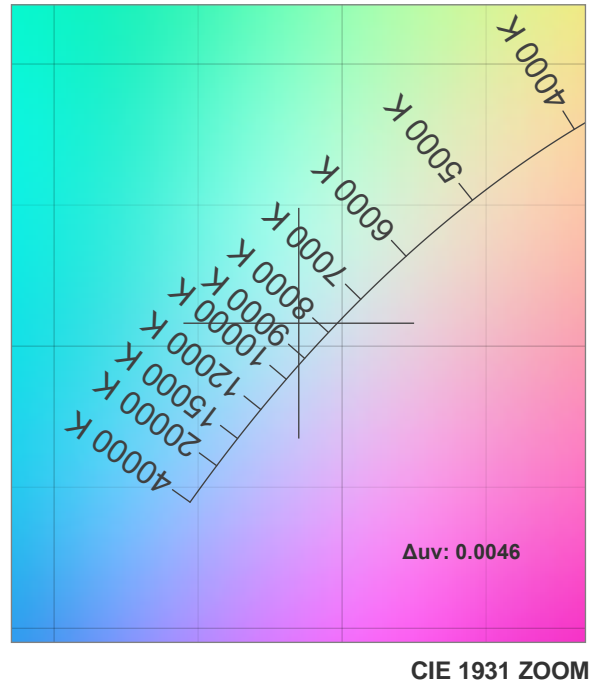
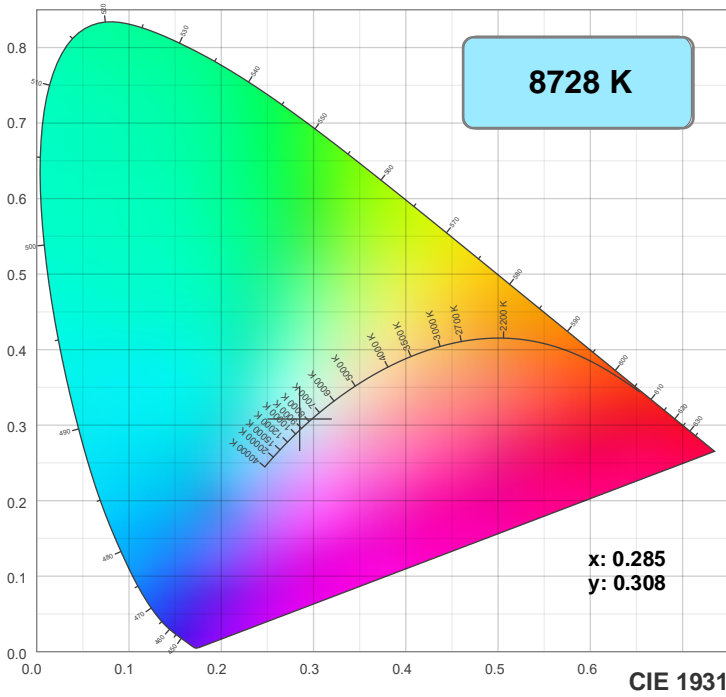
Dominant Wavelength: 482nm



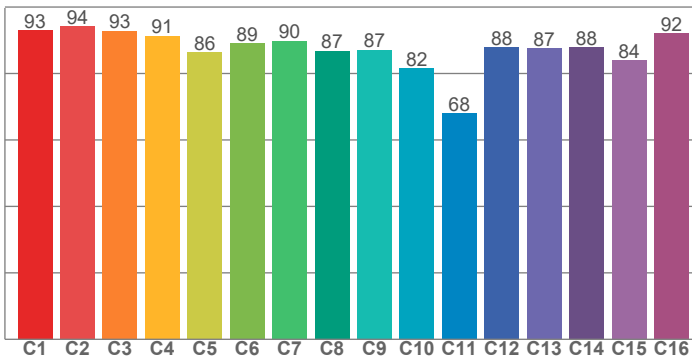
Power



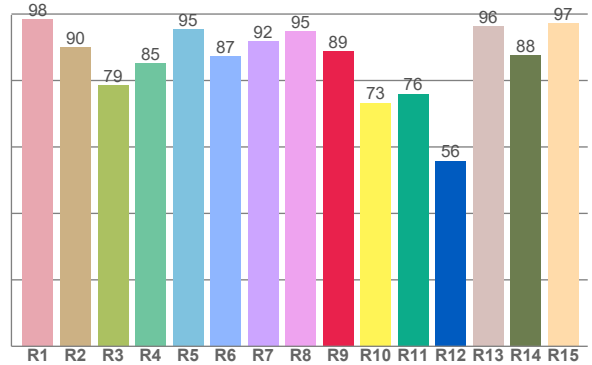
Color Details



TM30: 87.7



CRI: 90.1 (R1-R8)



CRI R values, only R1-R8 are used to calculate final CRI value

R1	R2	R3	R4	R5	R6	R7	R8	R9	R10	R11	R12	R13	R14	R15
98.4	89.9	78.5	85.2	95.3	87.3	91.7	94.8	88.7	73.3	76.0	55.8	96.3	87.5	97.2

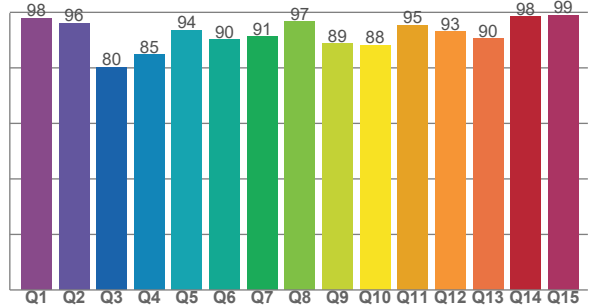
TM30 C values, 16 binned values out of total of 99 C values

C1	C2	C3	C4	C5	C6	C7	C8	C9	C10	C11	C12	C13	C14	C15	C16
93.0	94.2	92.9	91.3	86.3	89.1	89.8	86.9	87.1	81.6	67.9	87.9	87.5	87.8	84.0	92.1

CQS Q values

Q1	Q2	Q3	Q4	Q5	Q6	Q7	Q8	Q9	Q10	Q11	Q12	Q13	Q14	Q15
97.9	96.2	80.2	84.8	93.6	90.2	91.3	96.7	88.6	88.2	95.4	93.0	90.4	98.4	99.0

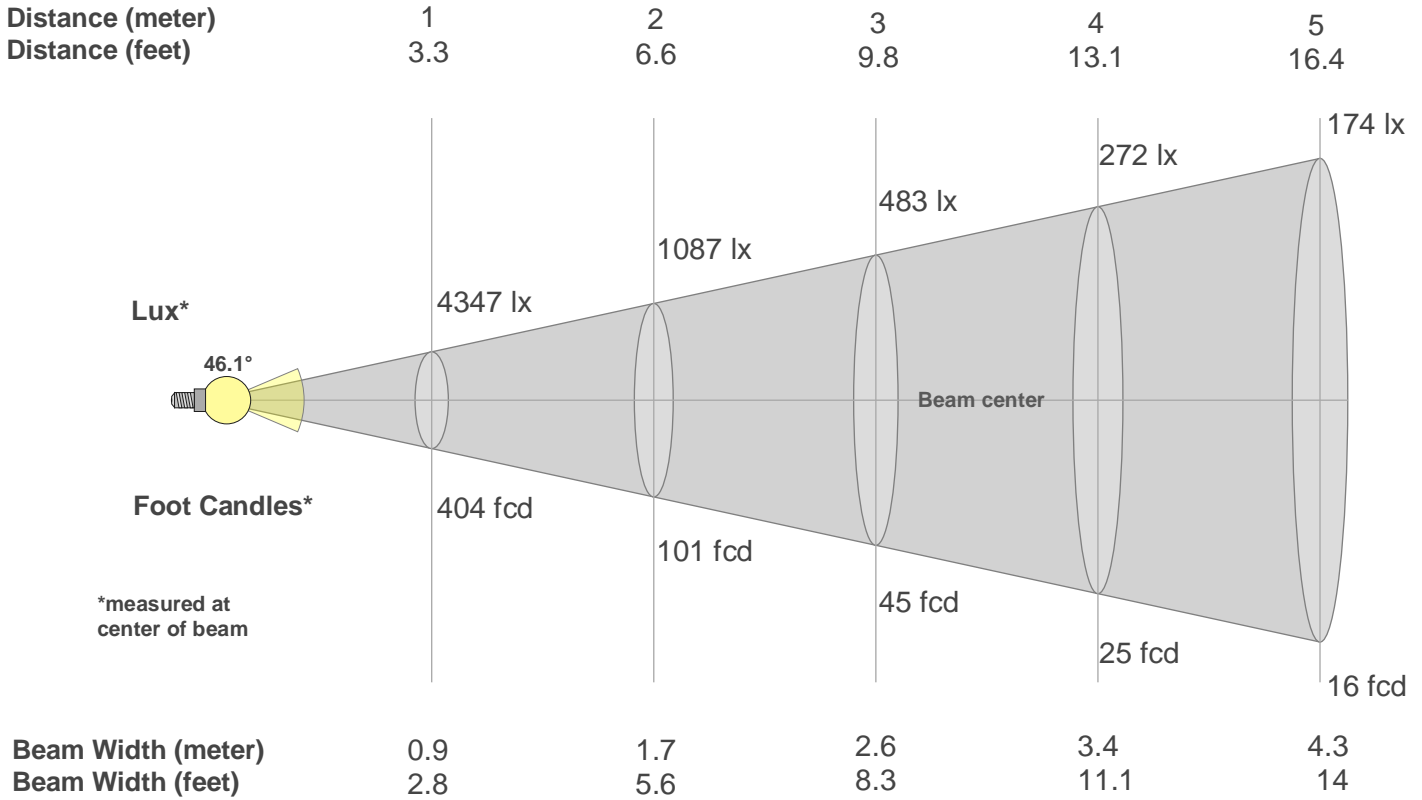
CQS: 90.7



Color Parameters

Color Temperature	Color Rendering Index	Red Component	Color Fidelity	Color Gamut	Color Quality Scale	Color Coordinate CIE 1931	Color Coordinate CIE 1931	Color Coordinate	Color Coordinate	Color Deviation from Black Body
CCT	CRI	CRI R9	TM30 Rf	TM30 Rg	CQS	x	y	u	v	Δuv
8728 K	90.1	88.7	87.7	102.8	90.7	0.285	0.308	0.186	0.302	0.0046

Beam Details



Beam Intensities from 1-20m

m	1	2	3	4	5	6	7	8	9	10	11	12	13	14	15	16	17	18	19	20
ft	3.3	6.6	9.8	13.1	16.4	19.7	23	26.2	29.5	32.8	36.1	39.4	42.7	45.9	49.2	52.5	55.8	59.1	62.3	65.6
lx	4347	1087	483	272	174	121	89	68	54	43	36	30	26	22	19	17	15	13	12	11
fcd	403.9	101	44.9	25.2	16.2	11.2	8.2	6.3	5	4	3.3	2.8	2.4	2.1	1.8	1.6	1.4	1.2	1.1	1

Intensities in 0° C-plane

0°	2°	4°	6°	8°	10°	12°	14°	16°	18°	20°	22°	24°	26°	28°	30°	32°	34°	36°	38°
4347	4325	4248	4125	3961	3763	3534	3291	3037	2779	2525	2291	2071	1875	1697	1534	1400	1242	1015	755
100%	99%	98%	95%	91%	87%	81%	76%	70%	64%	58%	53%	48%	43%	39%	35%	32%	29%	23%	17%

Intensities in 90° C-plane

0°	2°	4°	6°	8°	10°	12°	14°	16°	18°	20°	22°	24°	26°	28°	30°	32°	34°	36°	38°
4347	4325	4248	4125	3961	3763	3534	3291	3037	2779	2525	2291	2071	1875	1697	1534	1400	1242	1015	755
100%	99%	98%	95%	91%	87%	81%	76%	70%	64%	58%	53%	48%	43%	39%	35%	32%	29%	23%	17%

Intensities in 180° C-plane

0°	2°	4°	6°	8°	10°	12°	14°	16°	18°	20°	22°	24°	26°	28°	30°	32°	34°	36°	38°
4347	4312	4227	4100	3937	3737	3514	3282	3036	2779	2532	2294	2075	1868	1671	1508	1378	1198	966	704
100%	99%	97%	94%	91%	86%	81%	75%	70%	64%	58%	53%	48%	43%	38%	35%	32%	28%	22%	16%

Intensities in 270° C-plane

0°	2°	4°	6°	8°	10°	12°	14°	16°	18°	20°	22°	24°	26°	28°	30°	32°	34°	36°	38°
4347	4312	4227	4100	3937	3737	3514	3282	3036	2779	2532	2294	2075	1868	1671	1508	1378	1198	966	704
100%	99%	97%	94%	91%	86%	81%	75%	70%	64%	58%	53%	48%	43%	38%	35%	32%	28%	22%	16%

Beam Angle 50%	Field Angle 10%	Cutoff Angle 2,5%	Intensity Ratio in 120° Cone	Intensity Ratio in 90° Cone
46.1°	80.8°	91.1°	99.0%	96.3%