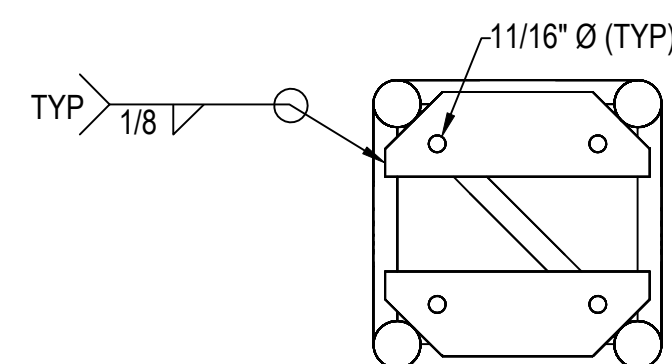
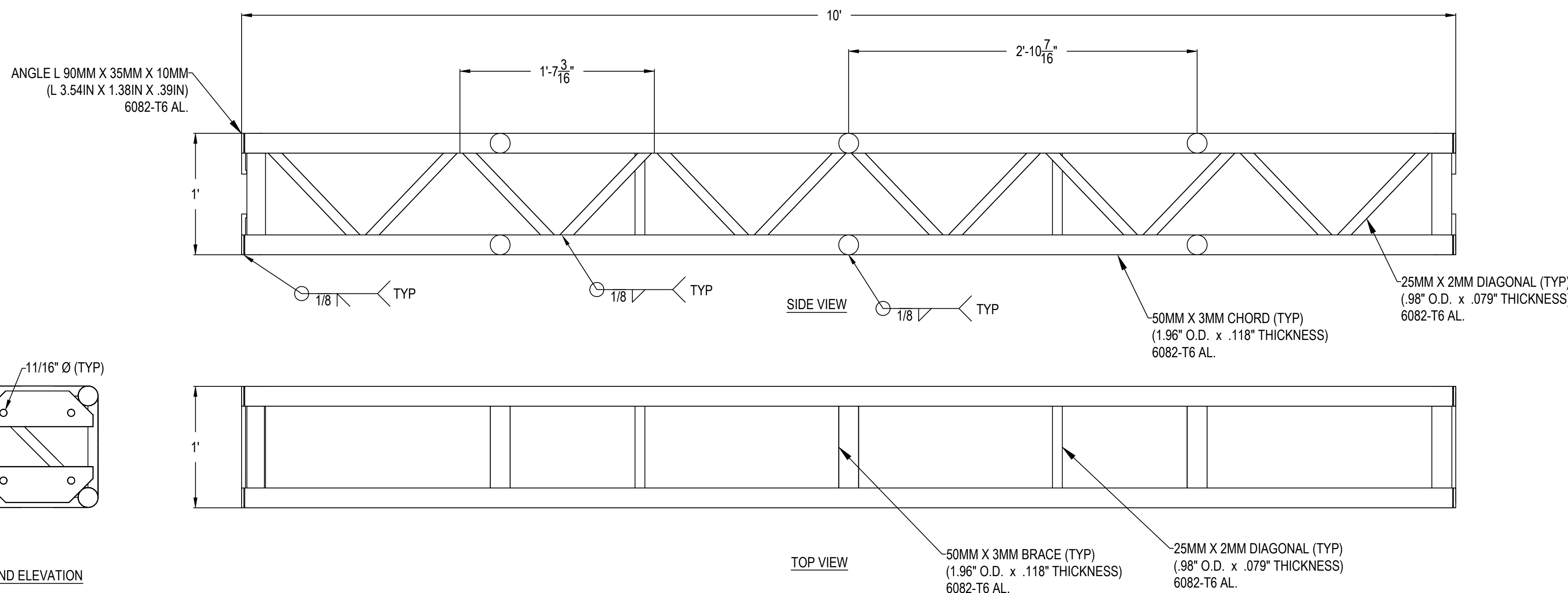


ISOMETRIC - TYPICAL DT-GP TRUSS
N.T.S.



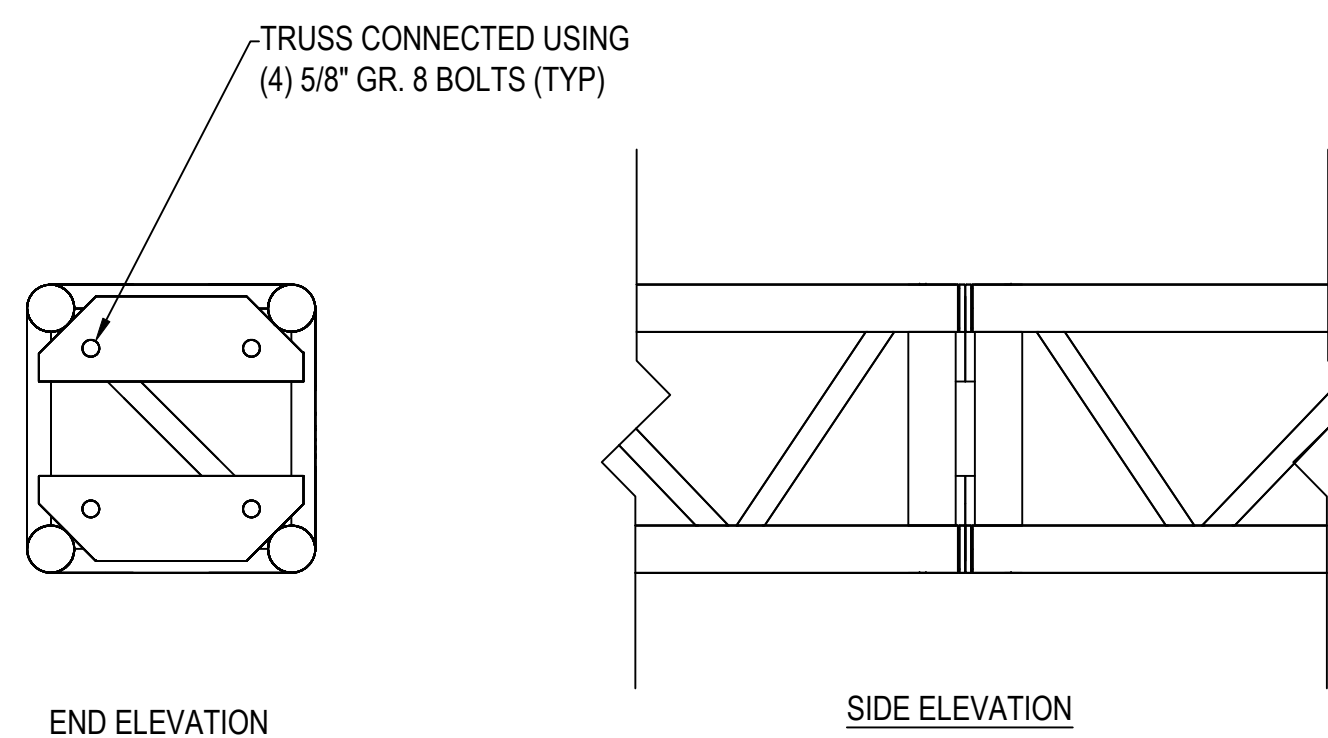
END ELEVATION



TYPICAL DT-GP TRUSS

1-1/2" = 1'-0"

NOTES:
GENERAL CONSTRUCTION SHOWN ONLY. LENGTH OF INDIVIDUAL TRUSS UNITS USED IN CONSTRUCTION WILL VARY
SEE MANUFACTURERS WEBSITE FOR ADDITIONAL INFORMATION ON AVAILABLE LENGTHS.
TRUSS IS FABRICATED USING METRIC UNITS. DIMENSIONS ON THESE DRAWINGS ARE ROUNDED TO THE NEAREST 1/16". DO NOT USE THESE DRAWINGS FOR FABRICATION OR REPAIR. DRAWINGS ARE FOR GENERAL DESCRIPTION AND ALLOWABLE LOADING ONLY.



END ELEVATION

SIDE ELEVATION

TYPICAL TRUSS TO TRUSS CONNECTION

1-1/2" = 1'-0"

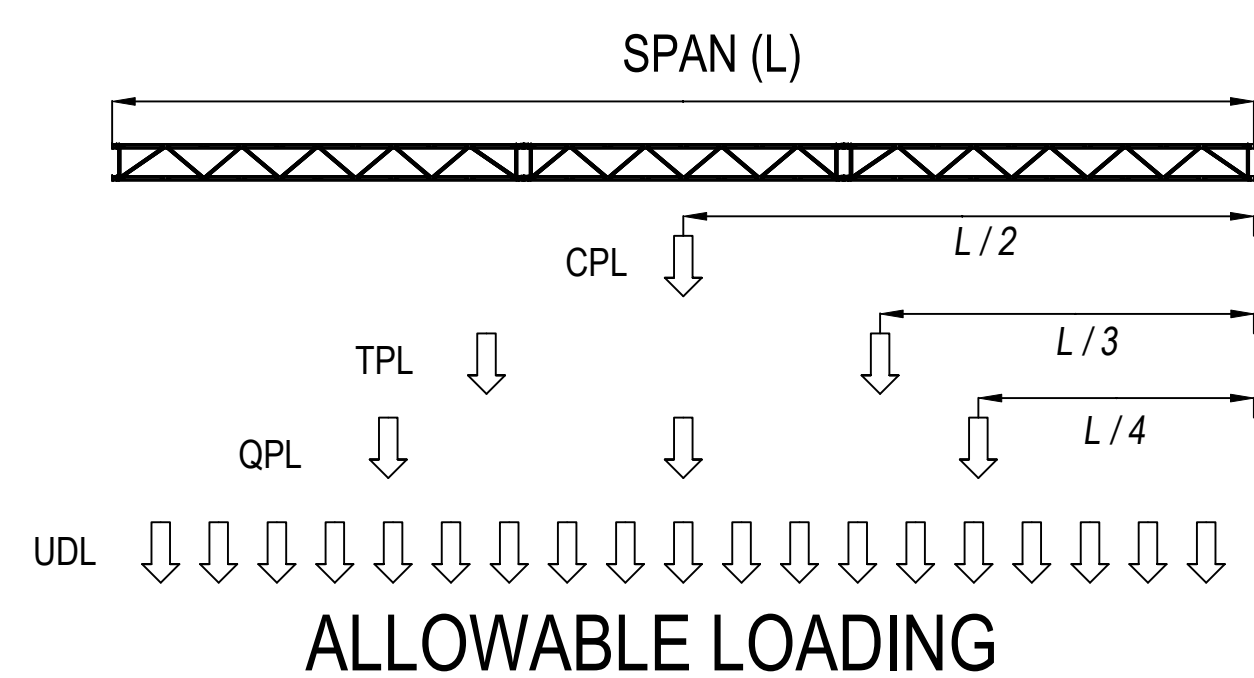
GENERAL NOTES

REFERENCED CODES

- 2018 INTERNATIONAL BUILDING CODE
- ANSI E1.21 2020 'ENTERTAINMENT TECHNOLOGY - DESIGN, MANUFACTURE AND USE OF ALUMINUM TRUSSES AND TOWERS'
- ADM 2015 'SPECIFICATION FOR ALUMINUM STRUCTURES'
- AISC 360-16 'SPECIFICATION FOR STRUCTURAL STEEL BUILDINGS'

ALUMINUM TRUSS

- FABRICATION AND ERECTION OF STRUCTURAL ALUMINUM SHALL CONFORM TO THE ALUMINUM DESIGN MANUAL - 2015
- STRUCTURAL ALUMINUM SHALL BE ALLOY 6082-T6 (U.N.O.)
- ALL WELD FILLER SHALL BE 5556 (U.N.O.)
- ALL WELDING MUST CONFORM TO AWS D1.2
- TAPERED PINS SUPPLIED BY GLOBAL TRUSS MUST BE USED IN INSTALLATION
- WHERE THE CONTACT OF DISSIMILAR METALS MAY CAUSE CORROSION, THE CONTACT SURFACE OF EITHER METAL MUST BE PROPERLY COATED TO PREVENT THE EFFECT.



ALLOWABLE LOADING

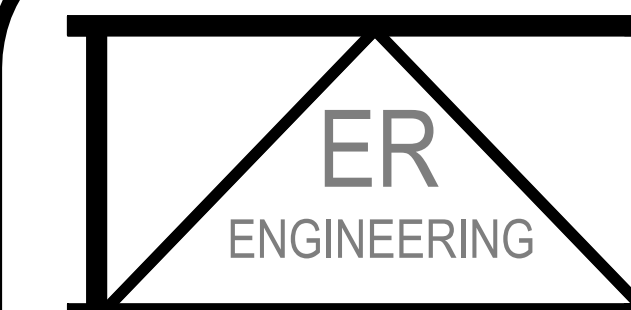
NOTES:

- ALL LOADS MUST BE ATTACHED TO TRUSS PANEL POINTS
- BRIDLES ARE NOT PERMITTED UNLESS APPROVED IN WRITING BY A LICENSED STRUCTURAL ENGINEER.
- SELF WEIGHT OF THE TRUSS HAS BEEN INCLUDED IN THE ALLOWABLE LOADING TABLES. NO REDUCTION IS REQUIRED TO ACCOUNT FOR THE TRUSS ITSELF.
- NO SHOCK OR DYNAMIC FORCES HAVE BEEN INCLUDED IN THE ALLOWABLE LOADING.
- UNIFORMLY DISTRIBUTED LOADS APPLY ONLY TO LOADS EVENLY DISTRIBUTED ACROSS THE ENTIRE SPAN
- LOADS SEEN IN THE TABLE ARE NOT ADDITIVE.
- THE ALLOWABLE LOADING TABLES HAVE BEEN PROVIDED FOR GENERAL REFERENCE ONLY AND ALL RIGGING PLOTS SHOULD BE REVIEWED BY A LICENSED STRUCTURAL ENGINEER.

DT-GP LOAD SPAN TABLE								
Limited based on Strength and L/180 Deflections								
TRUSS SPAN	UNIFORMLY DISTRIBUTED LOAD (UDL)		CENTER POINT LOAD (CPL)		THIRD POINT LOADS (TPL)		QUARTER POINT LOADS (QPL)	
FEET	LOAD (PLF)	DEFLECTION (IN)	LOAD (LBS)	DEFLECTION (IN)	LOAD (LBS)	DEFLECTION (IN)	LOAD (LBS)	DEFLECTION (IN)
5	888	0.03	3,750	0.04	2,220	0.04	1,480	0.04
10	370	0.19	1,850	0.16	1,390	0.20	920	0.19
15	161	0.44	1,210	0.35	910	0.45	600	0.42
20	88	0.77	880	0.63	660	0.80	435	0.75
25	54	1.21	680	0.99	510	1.25	330	1.17
30	36	1.74	540	1.44	405	1.78	260	1.68
35	24	2.33	435	1.99	315	2.35	205	2.30
40	14	2.67	350	2.63	210	2.67	140	2.67
45	8	3	235	3	140	3	85	3
50	4.5	3.33	140	3.33	85	3.33	45	3.33

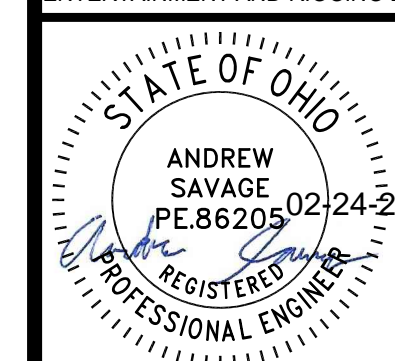
DT-GP LOAD SPAN TABLE								
Limited based on Strength Only (No Deflection Limits)								
TRUSS SPAN	UNIFORMLY DISTRIBUTED LOAD (UDL)		CENTER POINT LOAD (CPL)		THIRD POINT LOADS (TPL)		QUARTER POINT LOADS (QPL)	
FEET	LOAD (PLF)	DEFLECTION (IN)	LOAD (LBS)	DEFLECTION (IN)	LOAD (LBS)	DEFLECTION (IN)	LOAD (LBS)	DEFLECTION (IN)
5	888	0.03	3,750	0.04	2,220	0.04	1,480	0.04
10	370	0.19	1,850	0.16	1,390	0.20	920	0.19
15	161	0.44	1,210	0.35	910	0.45	600	0.42
20	88	0.77	880	0.63	660	0.80	435	0.75
25	54	1.21	680	0.99	510	1.23	330	1.17
30	36	1.74	540	1.44	405	1.77	260	1.68
35	25	2.37	435	1.99	325	2.41	205	2.30
40	18	3.10	350	2.63	265	3.15	165	3.01
45	13	3.92	285	3.38	215	3.98	130	3.82
50	9	4.84	230	4.25	170	4.90	100	4.73

DT-GP LOAD SPAN TABLE								
Limited based on L/180 Deflections and Strength reduced by .85 per ANSI E1.21								
TRUSS SPAN	UNIFORMLY DISTRIBUTED LOAD (UDL)		CENTER POINT LOAD (CPL)		THIRD POINT LOADS (TPL)		QUARTER POINT LOADS (QPL)	
FEET	LOAD (PLF)	DEFLECTION (IN)	LOAD (LBS)	DEFLECTION (IN)	LOAD (LBS)	DEFLECTION (IN)	LOAD (LBS)	DEFLECTION (IN)
5	755	0.2	3,180	0.03	1,890	0.03	1,255	0.03
10	315	0.17	1,570	0.13	1,180	0.17	785	0.16
15	135	0.37	1,030	0.30	770	0.38	510	0.36
20	75	0.67	750	0.54	560	0.68	370	0.64
25	46	1.05	580	0.86	430	1.07	280	1.01
30	30	1.52	460	1.26	345	1.55	220	1.48
35	21	2.08	370	1.76	275	2.12	175	2.05
40	14	2.67	300	2.35	210	2.67	140	2.67
45	8	3	235	3	140	3	85	3
50	4.5	3.33	140	3.33	80	3.33	45	3.33



Entertainment and Rigging Engineering, LLC
6310 Donegal Drive
West Chester, OH 45069

COPYRIGHT © 2020
THIS DRAWING IS THE EXCLUSIVE PROPERTY OF ENTERTAINMENT AND RIGGING ENGINEERING, LLC. NEITHER THE DRAWING OR INFORMATION CONTAINED MAY BE USED OR DISCLOSED TO THIRD PARTIES WITHOUT PRIOR WRITTEN PERMISSION FROM ENTERTAINMENT AND RIGGING ENGINEERING, LLC.



Project Name
DT-GP Truss Load Span Tables

Event/Venue Name and Address
General Use

Client Name and Address
Global Truss America, LLC
4295 Charter Street
Los Angeles, CA 90058

ISSUE/REVISIONS	
REV A	

Sheet Name
DT-GP Load Span Tables

Project No.
21.104.02

Date
02/24/2021

Sheet
S1.0