

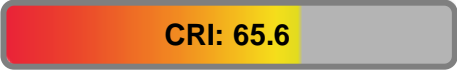
# Encore Profile Pro Color



Light Efficiency:



Light Quality:



Color Temperature:



Output: 4837 lm

Peak: 110924 cd

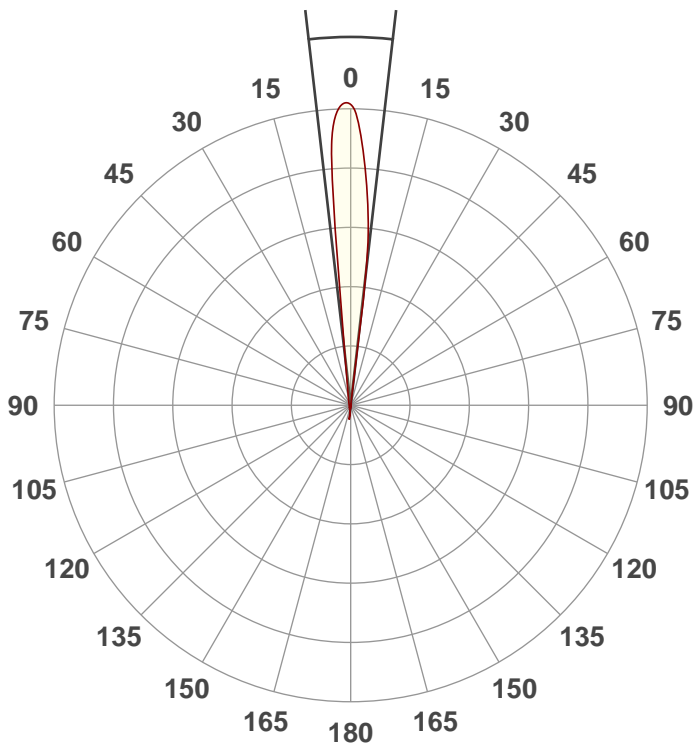
Power: 266.6 W

PF: 0.99



Beam Angle

13.1°



Test:  
Full On 14Deg

Date:  
2/3/2021

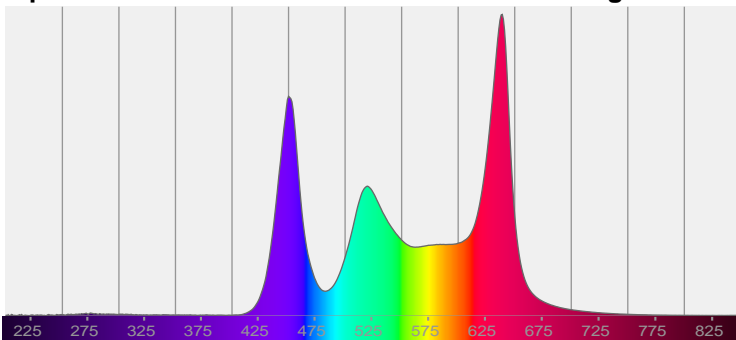
Note:



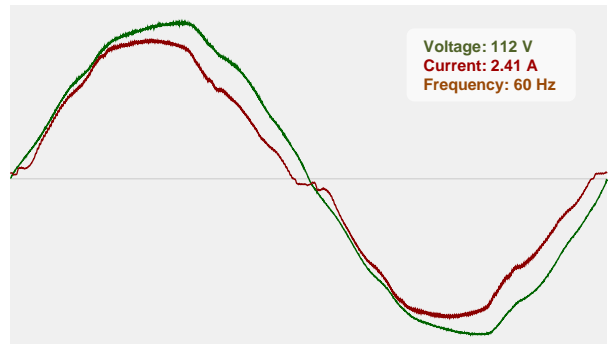
CIE 1931  
x: 0.349  
y: 0.315

Spectra

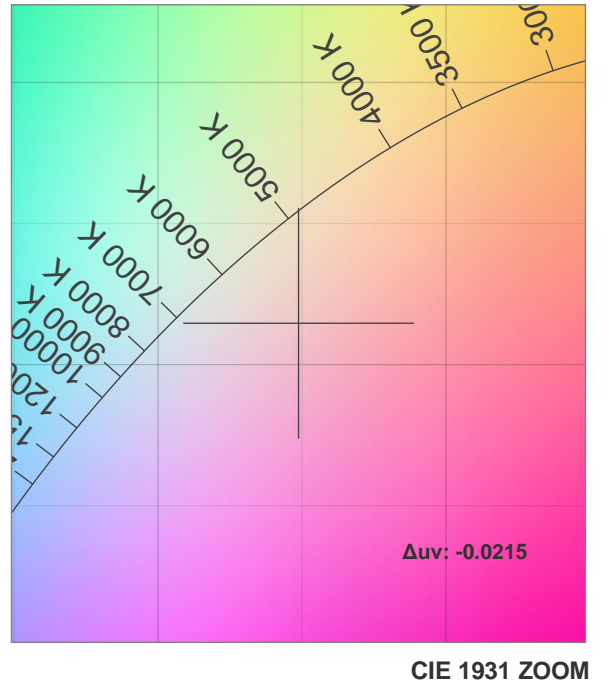
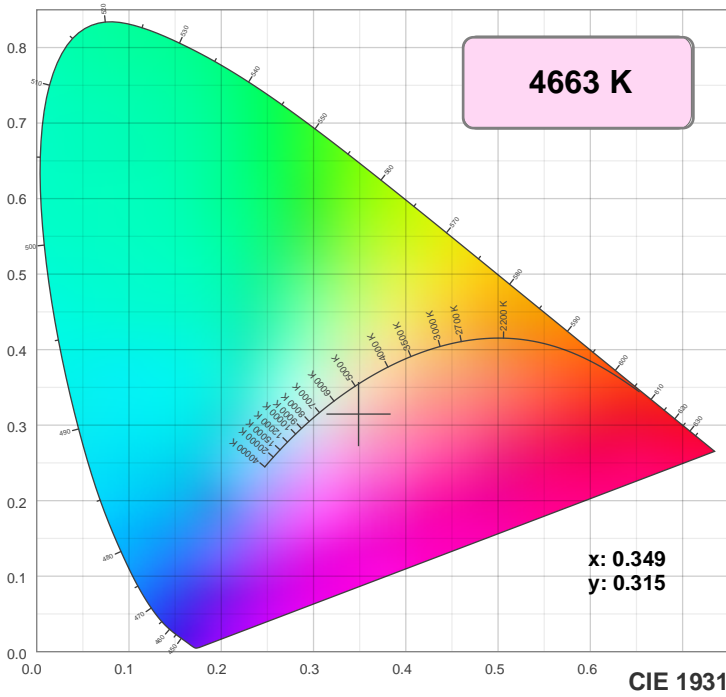
Dominant Wavelength: 829nm



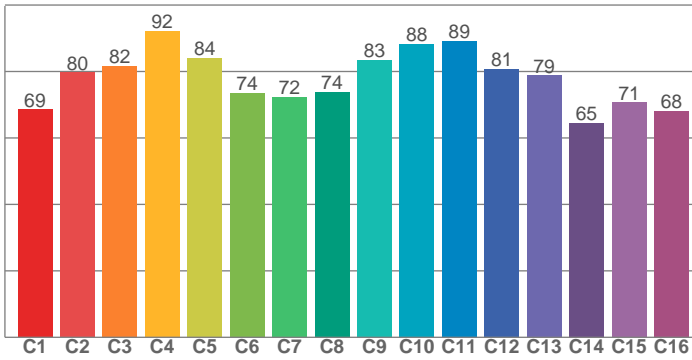
Power



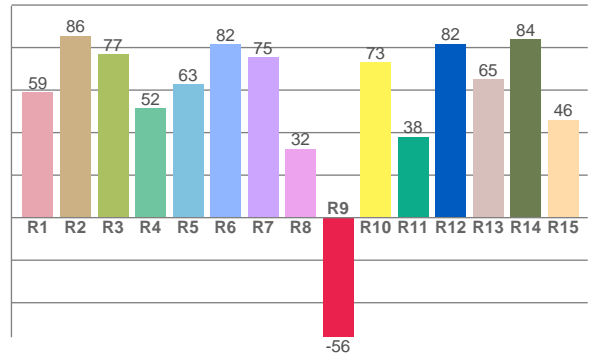
# Color Details



**TM30: 79.6**



**CRI: 65.6 (R1-R8)**



**CRI R values, only R1-R8 are used to calculate final CRI value**

R1	R2	R3	R4	R5	R6	R7	R8	R9	R10	R11	R12	R13	R14	R15
58.9	85.6	76.8	51.6	62.6	81.6	75.4	32.4	-56.3	73.1	38.0	81.8	65.0	83.8	46.1

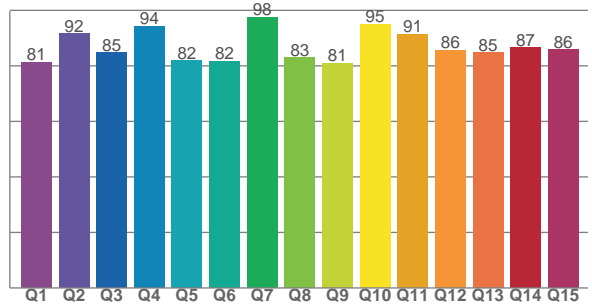
**TM30 C values, 16 binned values out of total of 99 C values**

C1	C2	C3	C4	C5	C6	C7	C8	C9	C10	C11	C12	C13	C14	C15	C16
68.6	79.7	81.6	92.3	84.0	73.5	72.3	73.8	83.4	88.3	89.2	80.8	78.9	64.6	70.6	68.2

**CQS Q values**

Q1	Q2	Q3	Q4	Q5	Q6	Q7	Q8	Q9	Q10	Q11	Q12	Q13	Q14	Q15
81.4	91.7	84.8	94.3	81.8	81.7	97.5	83.0	80.9	95.0	91.4	85.6	84.8	86.6	85.8

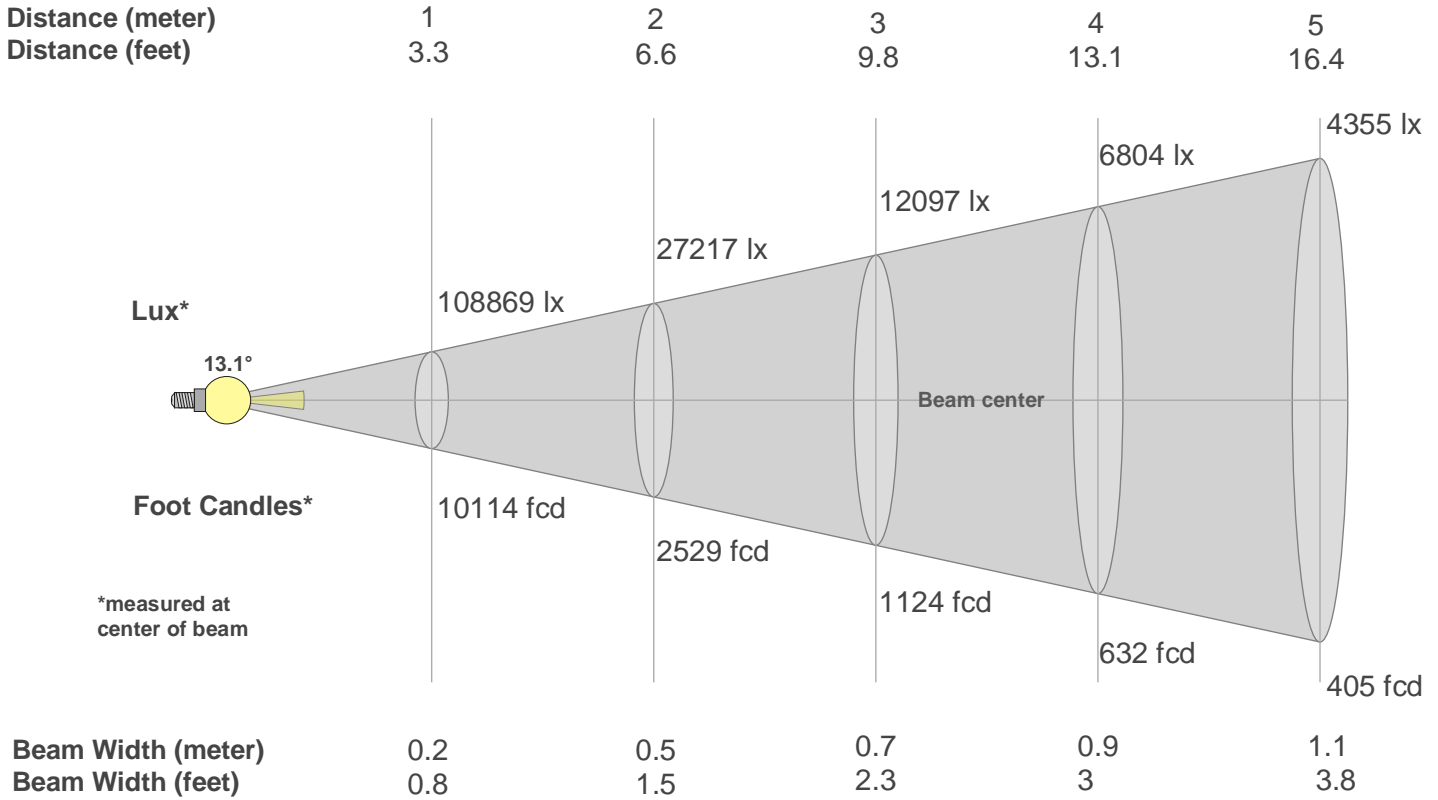
**CQS: 86.0**



## Color Parameters

Color Temperature	Color Rendering Index	Red Component	Color Fidelity	Color Gamut	Color Quality Scale	Color Coordinate CIE 1931	Color Coordinate CIE 1931	Color Coordinate	Color Coordinate	Color Deviation from Black Body
CCT	CRI	CRI R9	TM30 Rf	TM30 Rg	CQS	x	y	u	v	$\Delta uv$
4663 K	65.6	-56.3	79.6	121.7	86.0	0.349	0.315	0.230	0.311	-0.0215

# Beam Details



## Beam Intensities from 1-20m

m	1	2	3	4	5	6	7	8	9	10	11	12	13	14	15	16	17	18	19	20
ft	3.3	6.6	9.8	13.1	16.4	19.7	23	26.2	29.5	32.8	36.1	39.4	42.7	45.9	49.2	52.5	55.8	59.1	62.3	65.6
lx	108869	27217	12097	6804	4355	3024	2222	1701	1344	1089	900	756	644	555	484	425	377	336	302	272
fcd	10114.2	2528.6	1123.8	632.1	404.6	281	206.4	158	124.9	101.1	83.6	70.2	59.8	51.6	45	39.5	35	31.2	28	25.3

## Intensities in 0° C-plane

0°	1°	2°	3°	4°	5°	6°	7°	8°	9°	10°	11°	12°	13°	14°	15°	16°	17°	18°	19°	
109K	106K	104K	101K	99K	84K	66K	47K	29K	11K	7K	5K	3K	2K	0K	0K	0K	0K	0K	0K	0K
100%	98%	95%	93%	91%	77%	60%	44%	27%	10%	6%	5%	3%	2%	0%	0%	0%	0%	0%	0%	0%

## Intensities in 90° C-plane

0°	1°	2°	3°	4°	5°	6°	7°	8°	9°	10°	11°	12°	13°	14°	15°	16°	17°	18°	19°	
109K	106K	104K	101K	99K	84K	66K	47K	29K	11K	7K	5K	3K	2K	0K	0K	0K	0K	0K	0K	0K
100%	98%	95%	93%	91%	77%	60%	44%	27%	10%	6%	5%	3%	2%	0%	0%	0%	0%	0%	0%	0%

## Intensities in 180° C-plane

0°	1°	2°	3°	4°	5°	6°	7°	8°	9°	10°	11°	12°	13°	14°	15°	16°	17°	18°	19°	
109K	109K	100K	91K	82K	73K	63K	50K	37K	24K	11K	0K	0K	0K	0K	0K	0K	0K	0K	0K	0K
100%	100%	92%	84%	75%	67%	58%	46%	34%	22%	10%	0%	0%	0%	0%	0%	0%	0%	0%	0%	0%

## Intensities in 270° C-plane

0°	1°	2°	3°	4°	5°	6°	7°	8°	9°	10°	11°	12°	13°	14°	15°	16°	17°	18°	19°	
109K	109K	100K	91K	82K	73K	63K	50K	37K	24K	11K	0K	0K	0K	0K	0K	0K	0K	0K	0K	0K
100%	100%	92%	84%	75%	67%	58%	46%	34%	22%	10%	0%	0%	0%	0%	0%	0%	0%	0%	0%	0%

Beam Angle 50%	Field Angle 10%	Cutoff Angle 2,5%	Intensity Ratio in 120° Cone	Intensity Ratio in 90° Cone
13.1°	19°	23°	100.0%	100.0%