

Encore Profile Pro Color



Light Efficiency:



Light Quality:



Color Temperature:



Output: 6714 lm

Peak: 29777 cd

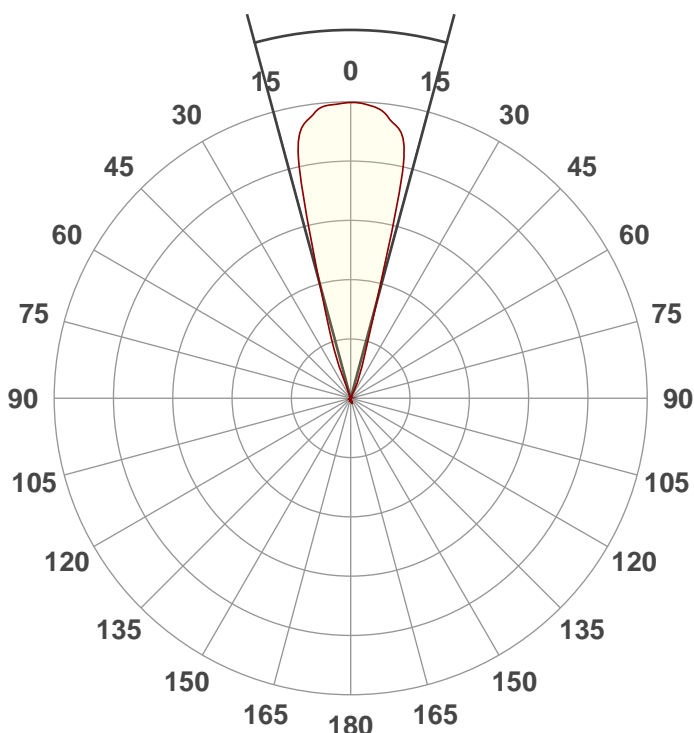
Power: 266 W

PF: 0.99



Beam Angle

30.2°



Test: Full On 36Deg

Date: 2/3/2021

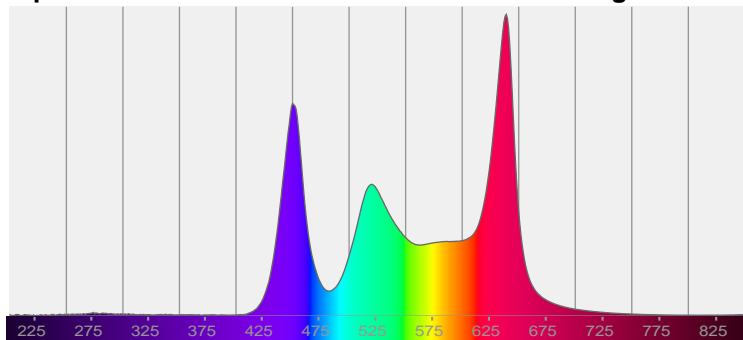
Note:



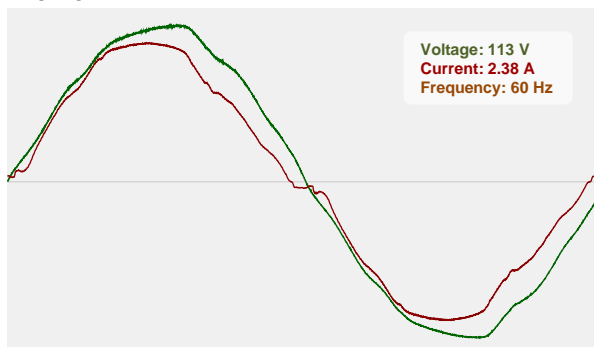
CIE 1931
x: 0.351
y: 0.321

Spectra

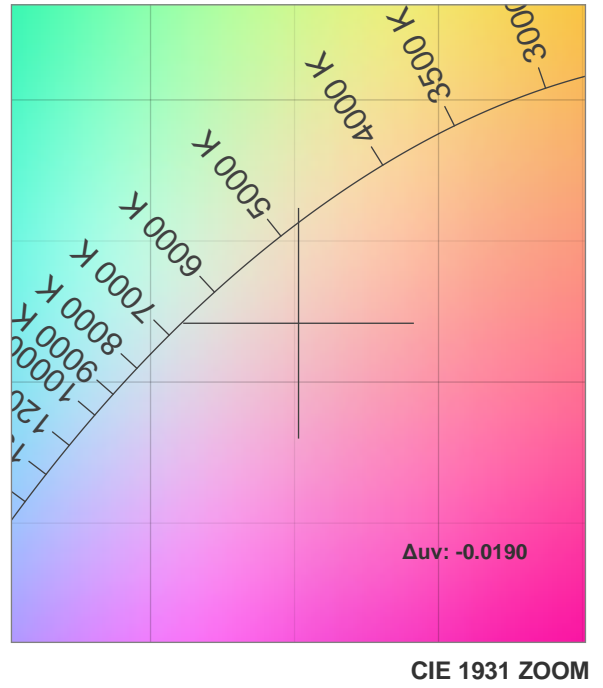
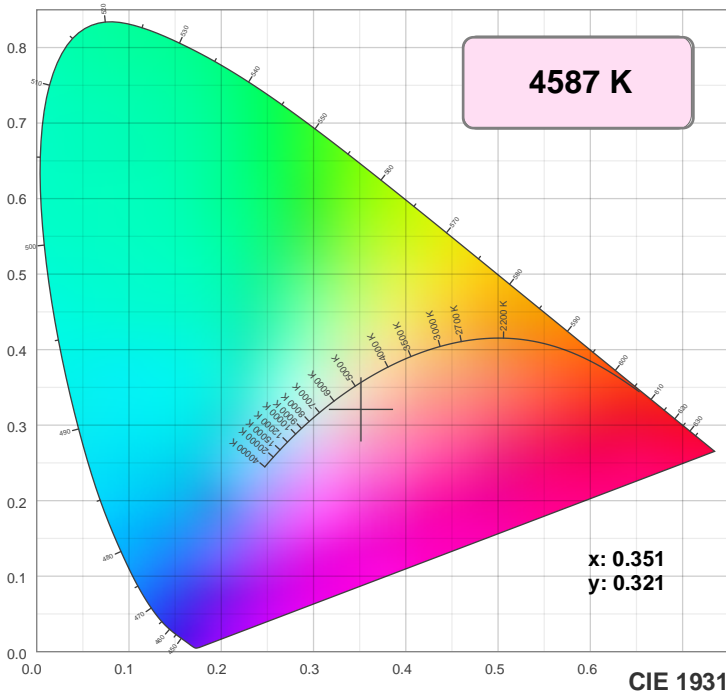
Dominant Wavelength: 829nm



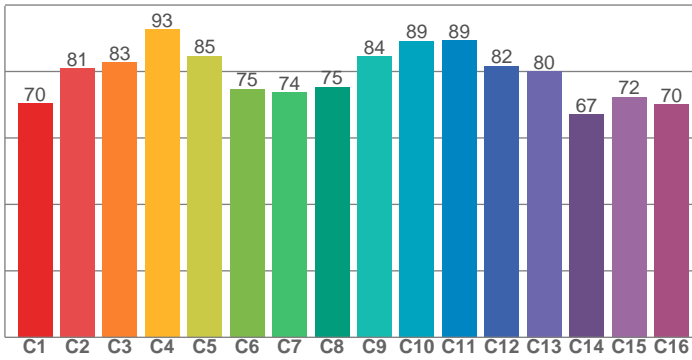
Power



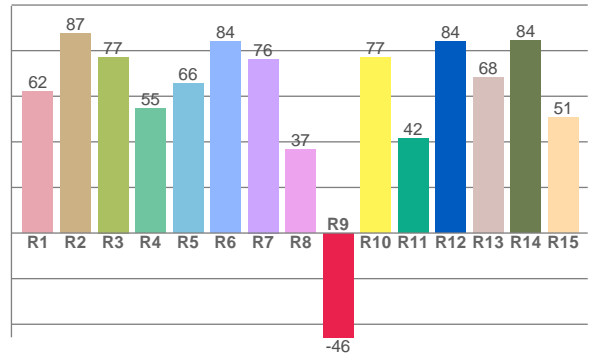
Color Details



TM30: 80.7



CRI: 68.0 (R1-R8)



CRI R values, only R1-R8 are used to calculate final CRI value

R1	R2	R3	R4	R5	R6	R7	R8	R9	R10	R11	R12	R13	R14	R15
62.2	87.5	77.2	54.5	65.7	83.9	76.3	36.6	-45.7	76.9	41.6	84.1	68.1	84.3	50.6

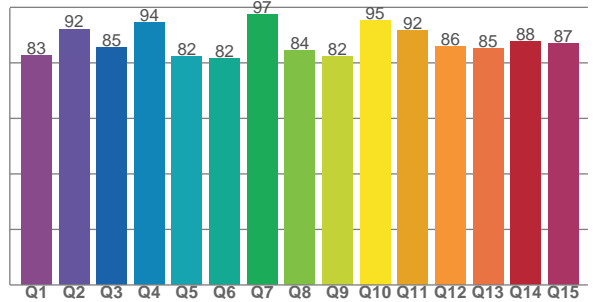
TM30 C values, 16 binned values out of total of 99 C values

C1	C2	C3	C4	C5	C6	C7	C8	C9	C10	C11	C12	C13	C14	C15	C16
70.4	81.0	82.7	92.6	84.7	74.8	73.7	75.4	84.5	89.2	89.4	81.6	80.1	67.0	72.3	70.0

CQS Q values

Q1	Q2	Q3	Q4	Q5	Q6	Q7	Q8	Q9	Q10	Q11	Q12	Q13	Q14	Q15
82.6	92.2	85.4	94.4	82.2	81.6	97.4	84.4	82.1	95.2	91.5	85.9	85.1	87.6	86.9

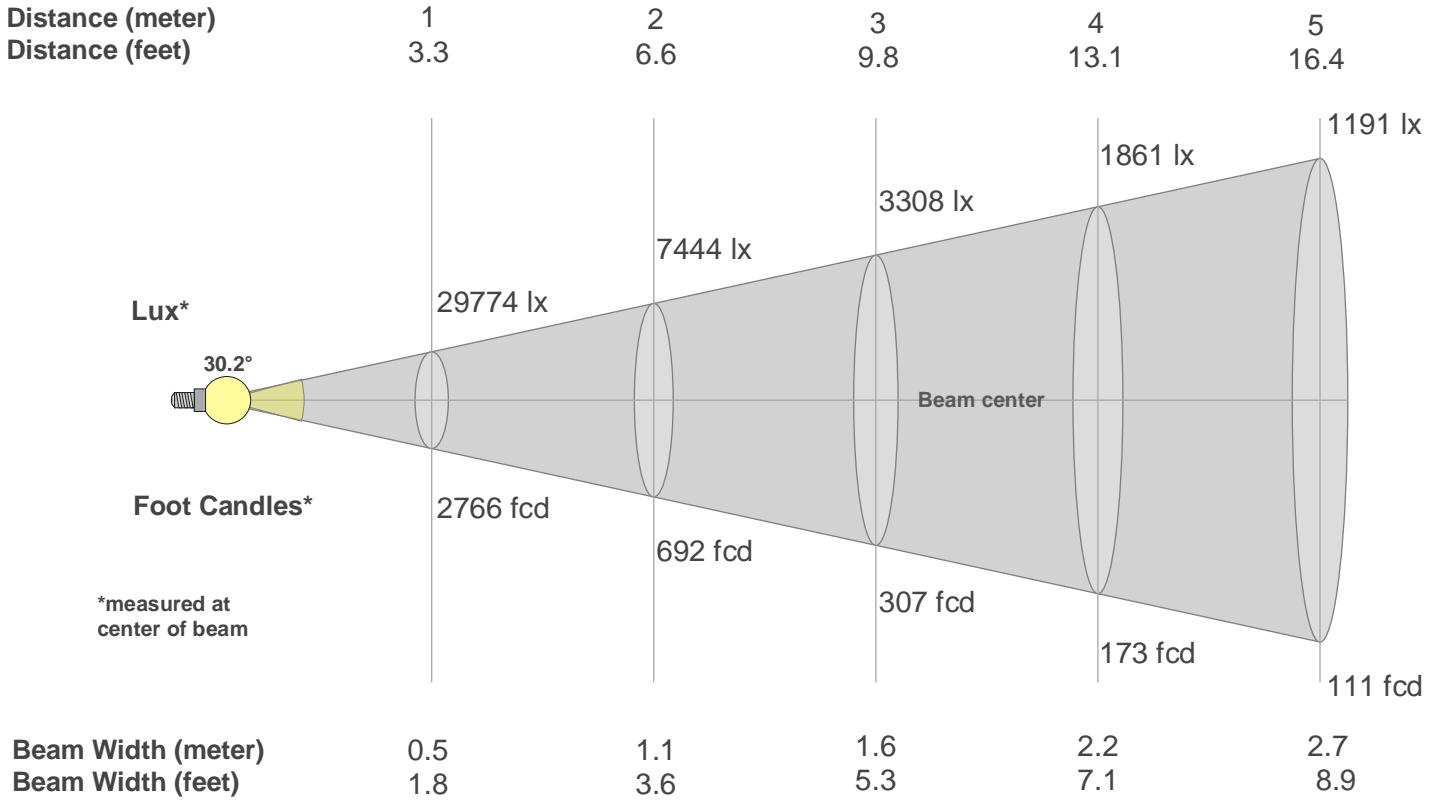
CQS: 86.6



Color Parameters

Color Temperature	Color Rendering Index	Red Component	Color Fidelity	Color Gamut	Color Quality Scale	Color Coordinate CIE 1931	Color Coordinate CIE 1931	Color Coordinate	Color Coordinate	Color Deviation from Black Body
CCT	CRI	CRI R9	TM30 Rf	TM30 Rg	CQS	x	y	u	v	Δuv
4587 K	68.0	-45.7	80.7	120.4	86.6	0.351	0.321	0.229	0.313	-0.0190

Beam Details



Beam Intensities from 1-20m

m	1	2	3	4	5	6	7	8	9	10	11	12	13	14	15	16	17	18	19	20
ft	3.3	6.6	9.8	13.1	16.4	19.7	23	26.2	29.5	32.8	36.1	39.4	42.7	45.9	49.2	52.5	55.8	59.1	62.3	65.6
lx	29774	7444	3308	1861	1191	827	608	465	368	298	246	207	176	152	132	116	103	92	82	74
fcd	2766.1	691.5	307.3	172.9	110.6	76.8	56.5	43.2	34.1	27.7	22.9	19.2	16.4	14.1	12.3	10.8	9.6	8.5	7.7	6.9

Intensities in 0° C-plane

0°	1°	2°	3°	4°	5°	6°	7°	8°	9°	10°	11°	12°	13°	14°	15°	16°	17°	18°	19°
29.8K	29.8K	29.8K	29.7K	29.5K	29.4K	29.2K	29.1K	28.4K	27.6K	26.7K	25.9K	25.0K	22.3K	18.8K	15.3K	11.8K	8.3K	6.2K	4.8K
100%	100%	100%	100%	99%	99%	98%	98%	96%	93%	90%	87%	84%	75%	63%	51%	40%	28%	21%	16%

Intensities in 90° C-plane

0°	1°	2°	3°	4°	5°	6°	7°	8°	9°	10°	11°	12°	13°	14°	15°	16°	17°	18°	19°
29.8K	29.8K	29.8K	29.7K	29.5K	29.4K	29.2K	29.1K	28.4K	27.6K	26.7K	25.9K	25.0K	22.3K	18.8K	15.3K	11.8K	8.3K	6.2K	4.8K
100%	100%	100%	100%	99%	99%	98%	98%	96%	93%	90%	87%	84%	75%	63%	51%	40%	28%	21%	16%

Intensities in 180° C-plane

0°	1°	2°	3°	4°	5°	6°	7°	8°	9°	10°	11°	12°	13°	14°	15°	16°	17°	18°	19°
29.8K	29.8K	29.8K	29.7K	29.5K	29.2K	29.0K	28.8K	28.3K	27.5K	26.6K	25.7K	24.8K	23.1K	19.2K	15.3K	11.4K	7.6K	4.5K	3.6K
100%	100%	100%	100%	99%	98%	97%	97%	95%	92%	89%	86%	83%	77%	64%	51%	38%	25%	15%	12%

Intensities in 270° C-plane

0°	1°	2°	3°	4°	5°	6°	7°	8°	9°	10°	11°	12°	13°	14°	15°	16°	17°	18°	19°
29.8K	29.8K	29.8K	29.7K	29.5K	29.2K	29.0K	28.8K	28.3K	27.5K	26.6K	25.7K	24.8K	23.1K	19.2K	15.3K	11.4K	7.6K	4.5K	3.6K
100%	100%	100%	100%	99%	98%	97%	97%	95%	92%	89%	86%	83%	77%	64%	51%	38%	25%	15%	12%

Beam Angle 50%	Field Angle 10%	Cutoff Angle 2,5%	Intensity Ratio in 120° Cone	Intensity Ratio in 90° Cone
30.2°	39.8°	43.7°	99.5%	99.4%