

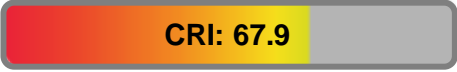
# Encore Profile Pro Color



Light Efficiency:



Light Quality:



Color Temperature:



Output: 6208 lm

Peak: 41485 cd

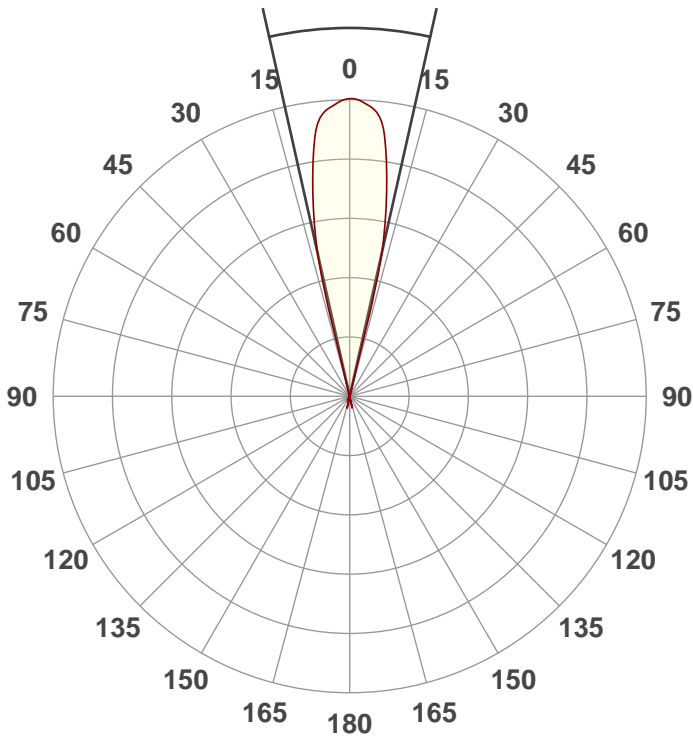
Power: 266.4 W

PF: 0.99



Beam Angle

25.3°



Test:  
Full On 26Deg

Date:  
2/3/2021

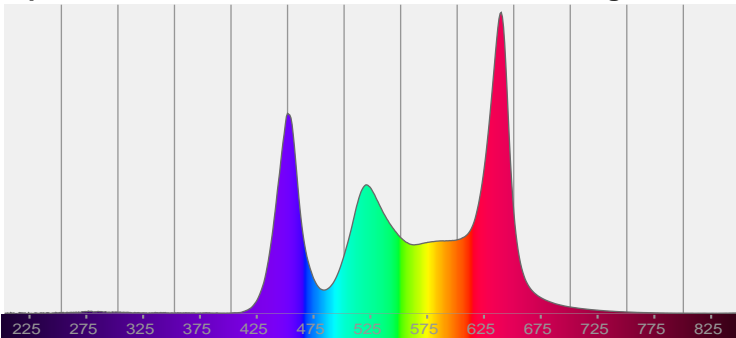
Note:



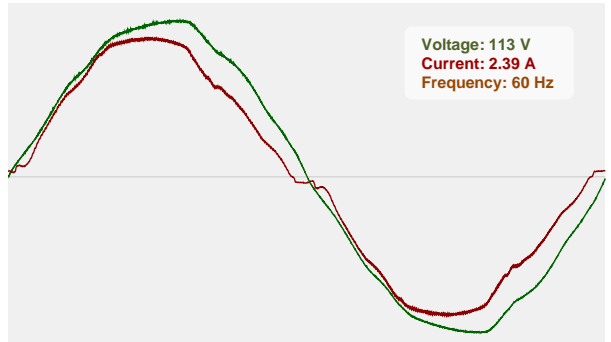
CIE 1931  
x: 0.356  
y: 0.325

Spectra

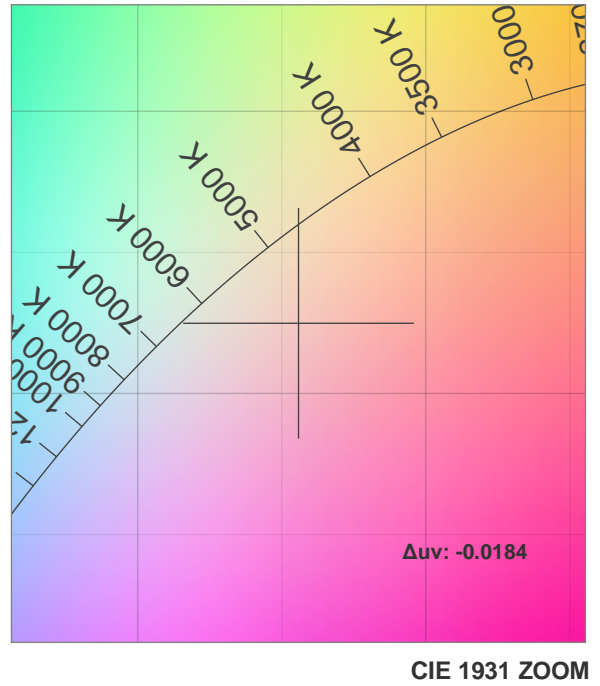
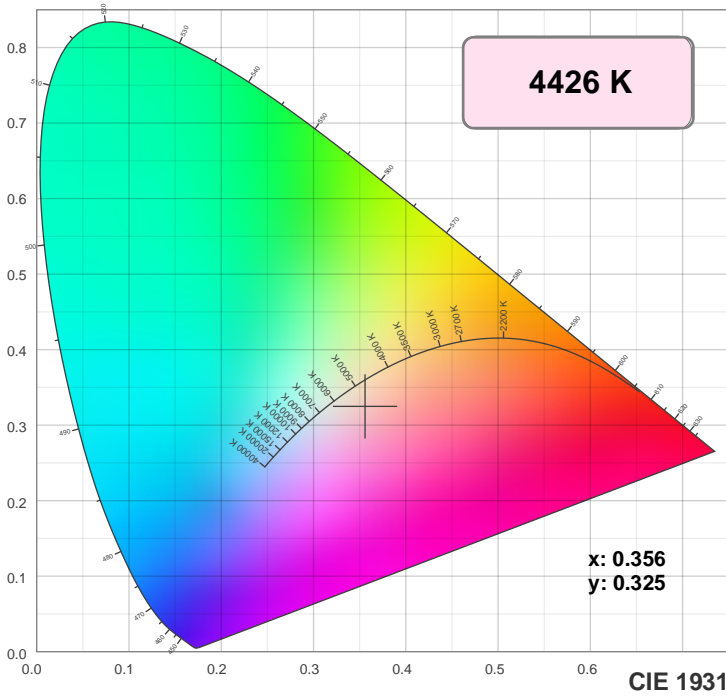
Dominant Wavelength: 631nm



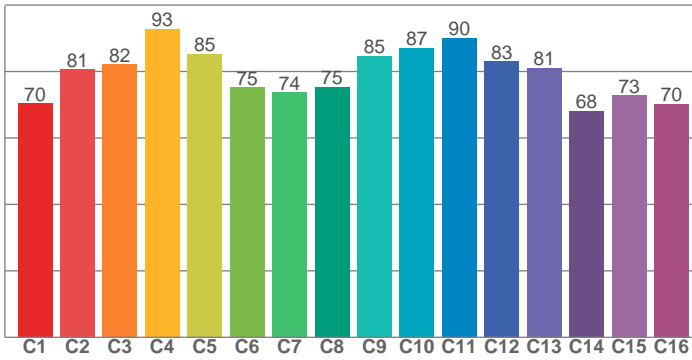
Power



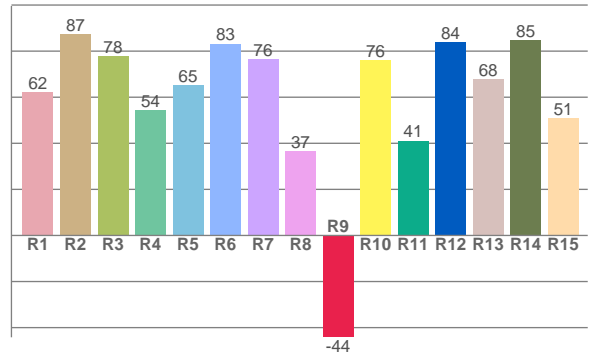
# Color Details



**TM30: 80.9**



**CRI: 67.9 (R1-R8)**



**CRI R values, only R1-R8 are used to calculate final CRI value**

R1	R2	R3	R4	R5	R6	R7	R8	R9	R10	R11	R12	R13	R14	R15
62.0	87.3	77.9	54.3	65.2	83.2	76.4	36.6	-44.2	76.1	41.1	83.9	67.9	84.7	50.9

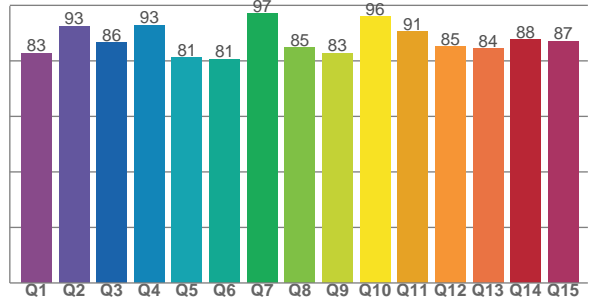
**TM30 C values, 16 binned values out of total of 99 C values**

C1	C2	C3	C4	C5	C6	C7	C8	C9	C10	C11	C12	C13	C14	C15	C16
70.4	80.7	82.1	92.9	85.3	75.2	73.8	75.3	84.6	87.1	90.1	83.0	81.1	68.1	72.8	70.3

**CQS Q values**

Q1	Q2	Q3	Q4	Q5	Q6	Q7	Q8	Q9	Q10	Q11	Q12	Q13	Q14	Q15
82.8	92.6	86.5	92.9	81.1	80.7	97.0	84.7	82.8	95.9	90.6	85.1	84.5	87.7	87.1

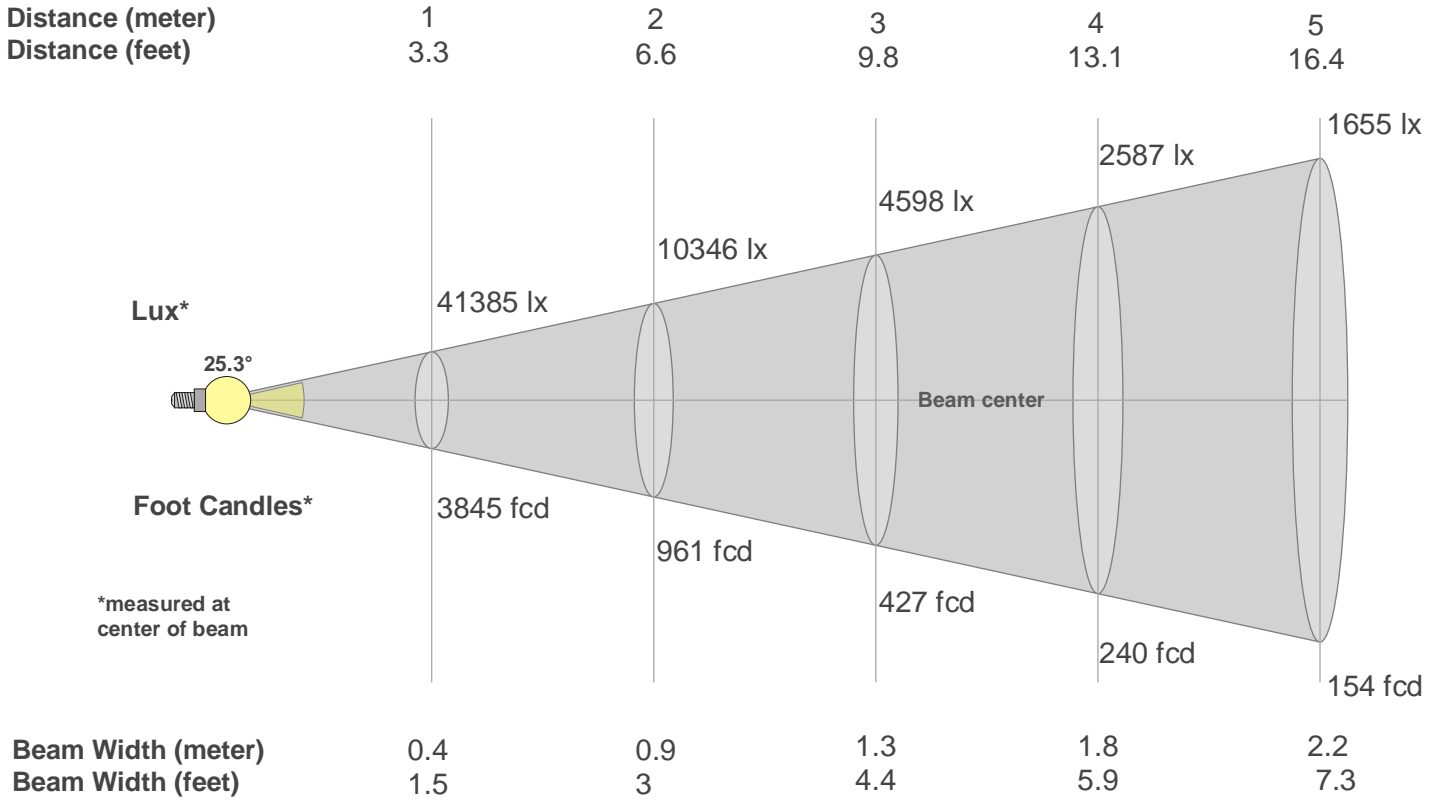
**CQS: 86.5**



## Color Parameters

Color Temperature	Color Rendering Index	Red Component	Color Fidelity	Color Gamut	Color Quality Scale	Color Coordinate CIE 1931	Color Coordinate CIE 1931	Color Coordinate	Color Coordinate	Color Deviation from Black Body
CCT	CRI	CRI R9	TM30 Rf	TM30 Rg	CQS	x	y	u	v	$\Delta uv$
4426 K	67.9	-44.2	80.9	120.2	86.5	0.356	0.325	0.230	0.315	-0.0184

# Beam Details



## Beam Intensities from 1-20m

m	1	2	3	4	5	6	7	8	9	10	11	12	13	14	15	16	17	18	19	20
ft	3.3	6.6	9.8	13.1	16.4	19.7	23	26.2	29.5	32.8	36.1	39.4	42.7	45.9	49.2	52.5	55.8	59.1	62.3	65.6
lx	41385	10346	4598	2587	1655	1150	845	647	511	414	342	287	245	211	184	162	143	128	115	103
fcd	3844.8	961.2	427.2	240.3	153.8	106.8	78.5	60.1	47.5	38.4	31.8	26.7	22.8	19.6	17.1	15	13.3	11.9	10.7	9.6

## Intensities in 0° C-plane

0°	1°	2°	3°	4°	5°	6°	7°	8°	9°	10°	11°	12°	13°	14°	15°	16°	17°	18°	19°
41.4K	41.3K	41.3K	40.9K	40.1K	39.2K	38.4K	37.6K	35.6K	32.4K	29.2K	26.0K	22.9K	19.2K	14.9K	10.7K	6.5K	2.2K	0.0K	0.0K
100%	100%	100%	99%	97%	95%	93%	91%	86%	78%	71%	63%	55%	46%	36%	26%	16%	5%	0%	0%

## Intensities in 90° C-plane

0°	1°	2°	3°	4°	5°	6°	7°	8°	9°	10°	11°	12°	13°	14°	15°	16°	17°	18°	19°
41.4K	41.3K	41.3K	40.9K	40.1K	39.2K	38.4K	37.6K	35.6K	32.4K	29.2K	26.0K	22.9K	19.2K	14.9K	10.7K	6.5K	2.2K	0.0K	0.0K
100%	100%	100%	99%	97%	95%	93%	91%	86%	78%	71%	63%	55%	46%	36%	26%	16%	5%	0%	0%

## Intensities in 180° C-plane

0°	1°	2°	3°	4°	5°	6°	7°	8°	9°	10°	11°	12°	13°	14°	15°	16°	17°	18°	19°
41.4K	41.4K	41.5K	41.1K	40.2K	39.4K	38.6K	37.7K	35.7K	32.5K	29.3K	26.1K	22.9K	19.2K	14.9K	10.6K	6.3K	2.1K	0.0K	0.0K
100%	100%	100%	99%	97%	95%	93%	91%	86%	78%	71%	63%	55%	46%	36%	26%	15%	5%	0%	0%

## Intensities in 270° C-plane

0°	1°	2°	3°	4°	5°	6°	7°	8°	9°	10°	11°	12°	13°	14°	15°	16°	17°	18°	19°
41.4K	41.4K	41.5K	41.1K	40.2K	39.4K	38.6K	37.7K	35.7K	32.5K	29.3K	26.1K	22.9K	19.2K	14.9K	10.6K	6.3K	2.1K	0.0K	0.0K
100%	100%	100%	99%	97%	95%	93%	91%	86%	78%	71%	63%	55%	46%	36%	26%	15%	5%	0%	0%

Beam Angle 50%	Field Angle 10%	Cutoff Angle 2,5%	Intensity Ratio in 120° Cone	Intensity Ratio in 90° Cone
25.3°	33.1°	34.5°	99.8%	99.7%