

12PX HEX PEARL



Light Efficiency:



Output: 1998 lm

Light Quality:



Peak: 7976 cd

Color Temperature:



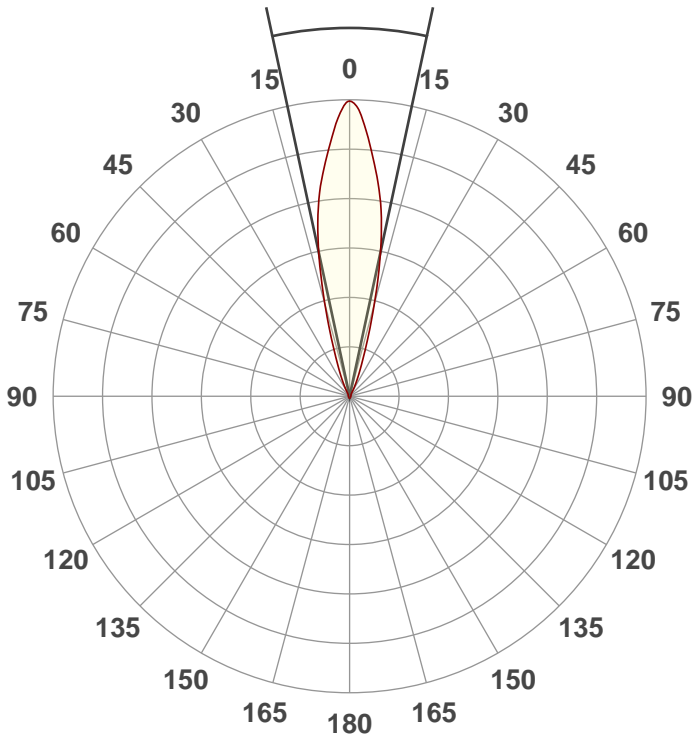
Power: 67.8 W

PF: 0.98



Beam Angle

24.2°



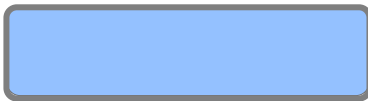
Test:

Full On

Date:

10/14/2020

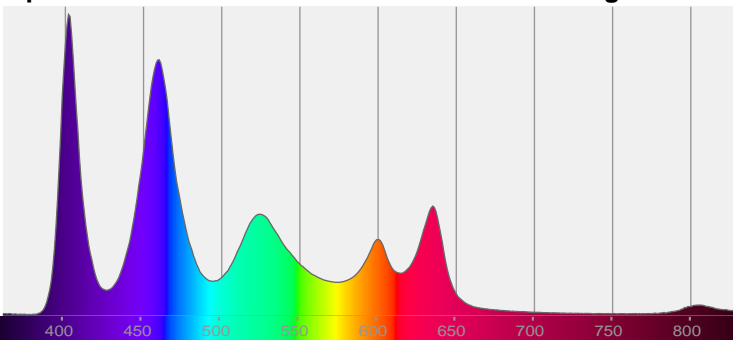
Note:



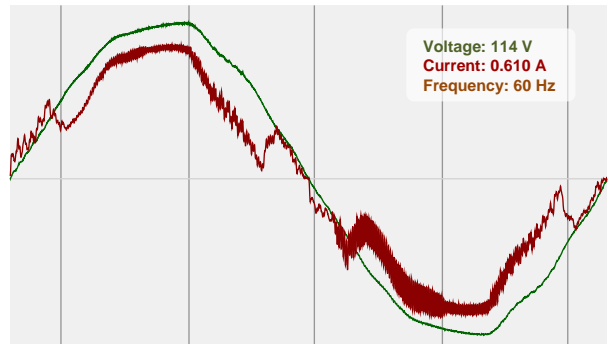
CIE 1931
x: 0.265
y: 0.248

Spectra

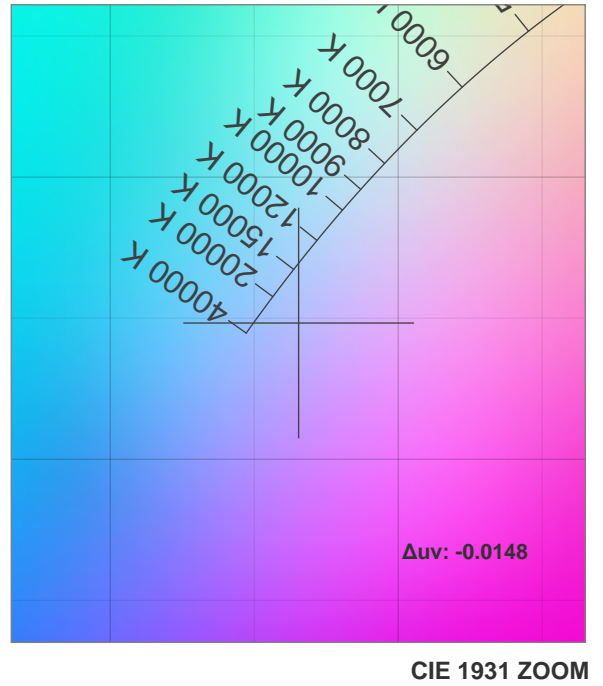
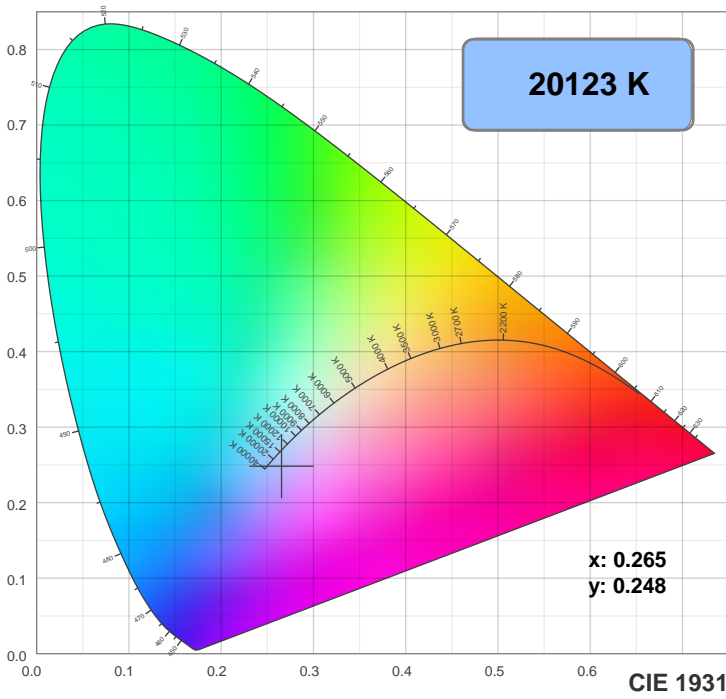
Dominant Wavelength: 462nm



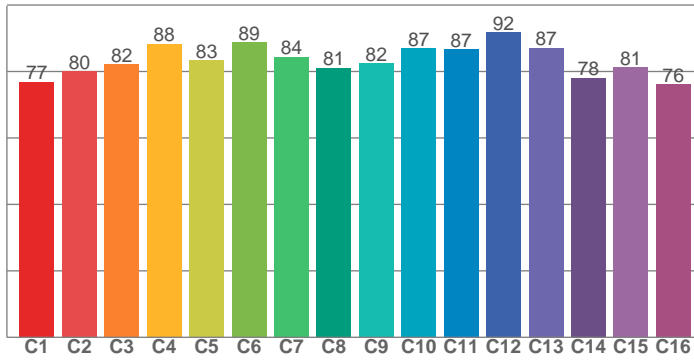
Power



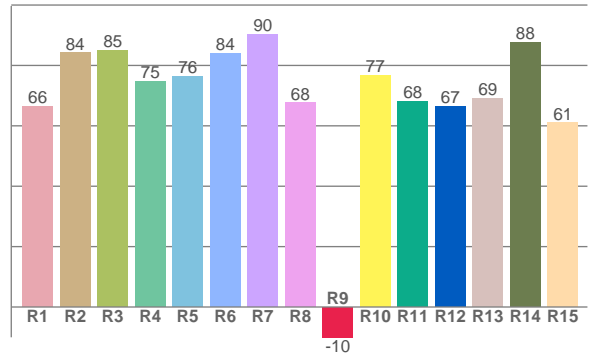
Color Details



TM30: 83.8



CRI: 78.5 (R1-R8)



CRI R values, only R1-R8 are used to calculate final CRI value

R1	R2	R3	R4	R5	R6	R7	R8	R9	R10	R11	R12	R13	R14	R15
66.3	84.1	85.1	74.8	76.4	83.9	90.1	67.6	-10.0	76.7	68.2	66.5	68.9	87.6	61.0

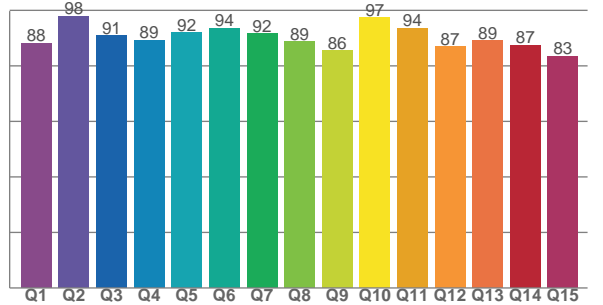
TM30 C values, 16 binned values out of total of 99 C values

C1	C2	C3	C4	C5	C6	C7	C8	C9	C10	C11	C12	C13	C14	C15	C16
76.9	80.0	82.1	88.4	83.3	88.8	84.4	81.1	82.4	86.9	86.7	91.7	87.0	78.1	81.2	76.1

CQS Q values

Q1	Q2	Q3	Q4	Q5	Q6	Q7	Q8	Q9	Q10	Q11	Q12	Q13	Q14	Q15
88.2	98.0	90.9	89.3	92.0	93.5	91.6	88.7	85.6	97.3	93.5	87.0	89.1	87.5	83.5

CQS: 89.6



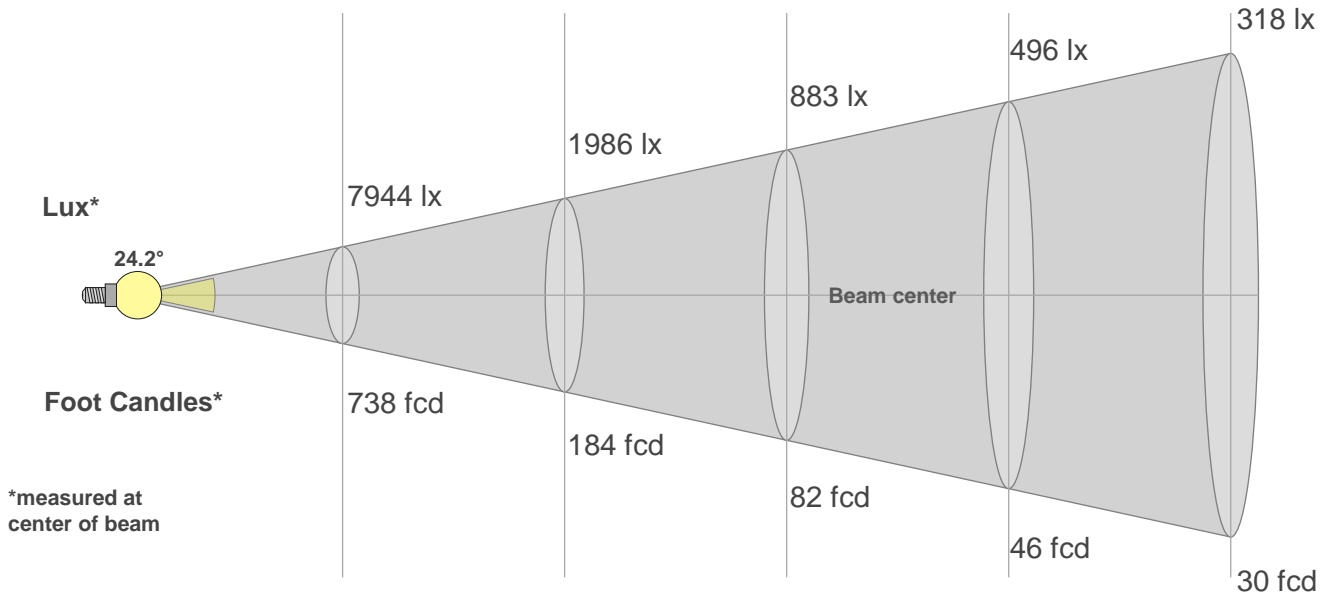
Color Parameters

Color Temperature	Color Rendering Index	Red Component	Color Fidelity	Color Gamut	Color Quality Scale	Color Coordinate CIE 1931	Color Coordinate CIE 1931	Color Coordinate	Color Coordinate	Color Deviation from Black Body
CCT	CRI	CRI R9	TM30 Rf	TM30 Rg	CQS	x	y	u	v	Δuv
20123 K	78.5	-10.0	83.8	106.2	89.6	0.265	0.248	0.195	0.273	-0.0148

Beam Details

Distance (meter)
Distance (feet)

1 2 3 4 5
3.3 6.6 9.8 13.1 16.4



Beam Width (meter)
Beam Width (feet)

0.4 0.9 1.3 1.7 2.1
1.4 2.8 4.2 5.6 7

Beam Intensities from 1-20m

m	1	2	3	4	5	6	7	8	9	10	11	12	13	14	15	16	17	18	19	20
ft	3.3	6.6	9.8	13.1	16.4	19.7	23	26.2	29.5	32.8	36.1	39.4	42.7	45.9	49.2	52.5	55.8	59.1	62.3	65.6
lx	7944	1986	883	496	318	221	162	124	98	79	66	55	47	41	35	31	27	25	22	20
fcd	738	184.5	82	46.1	29.5	20.5	15.1	11.5	9.1	7.4	6.1	5.1	4.4	3.8	3.3	2.9	2.6	2.3	2	1.8

Intensities in 0° C-plane

0°	2°	4°	6°	8°	10°	12°	14°	16°	18°	20°	22°	24°	26°	28°	30°	32°	34°	36°	38°
7944	7621	6992	6340	5695	4929	4035	3062	2183	1488	1027	733	524	361	242	166	119	98	82	70
100%	96%	88%	80%	72%	62%	51%	39%	27%	19%	13%	9%	7%	5%	3%	2%	1%	1%	1%	1%

Intensities in 90° C-plane

0°	2°	4°	6°	8°	10°	12°	14°	16°	18°	20°	22°	24°	26°	28°	30°	32°	34°	36°	38°
7944	7621	6992	6340	5695	4929	4035	3062	2183	1488	1027	733	524	361	242	166	119	98	82	70
100%	96%	88%	80%	72%	62%	51%	39%	27%	19%	13%	9%	7%	5%	3%	2%	1%	1%	1%	1%

Intensities in 180° C-plane

0°	2°	4°	6°	8°	10°	12°	14°	16°	18°	20°	22°	24°	26°	28°	30°	32°	34°	36°	38°
7944	7689	7048	6353	5680	4935	4038	3077	2177	1497	1025	729	520	365	249	169	118	94	82	70
100%	97%	89%	80%	72%	62%	51%	39%	27%	19%	13%	9%	7%	5%	3%	2%	1%	1%	1%	1%

Intensities in 270° C-plane

0°	2°	4°	6°	8°	10°	12°	14°	16°	18°	20°	22°	24°	26°	28°	30°	32°	34°	36°	38°
7944	7689	7048	6353	5680	4935	4038	3077	2177	1497	1025	729	520	365	249	169	118	94	82	70
100%	97%	89%	80%	72%	62%	51%	39%	27%	19%	13%	9%	7%	5%	3%	2%	1%	1%	1%	1%

Beam Angle 50%	Field Angle 10%	Cutoff Angle 2,5%	Intensity Ratio in 120° Cone	Intensity Ratio in 90° Cone
24.2°	43°	58.2°	82.7%	79.5%