

# 12PX HEX PEARL



Light Efficiency:



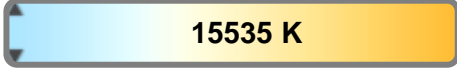
Output: 2219 lm

Light Quality:



Peak: 9490 cd

Color Temperature:



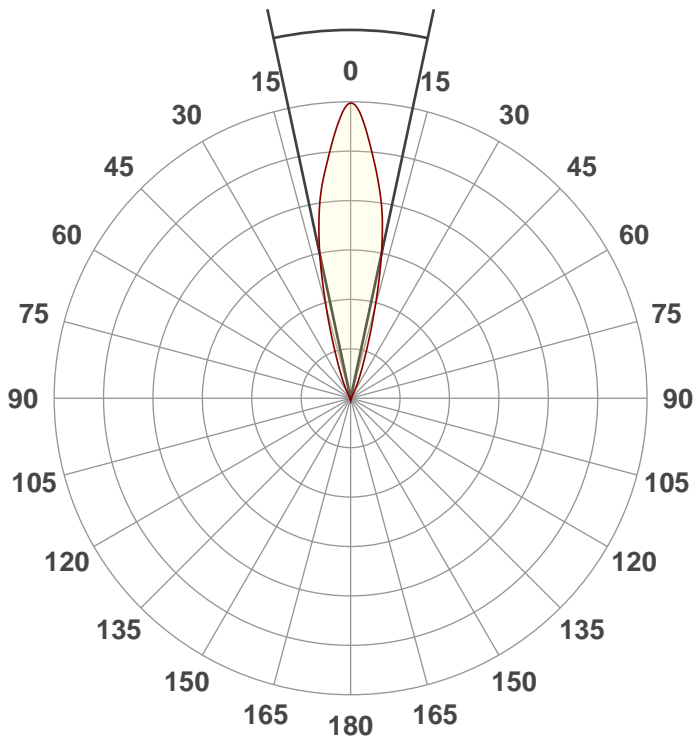
Power: 61.1 W

PF: 0.97

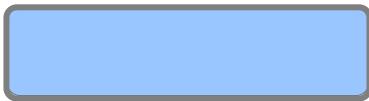


Beam Angle

## 24.2°



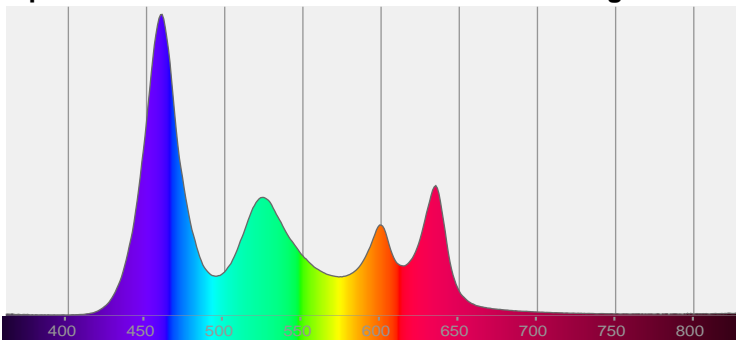
Test: Full On No UV  
Date: 10/14/2020  
Note:



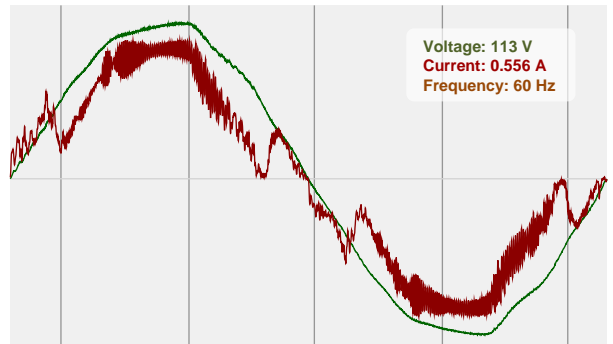
CIE 1931  
x: 0.270  
y: 0.257

Spectra

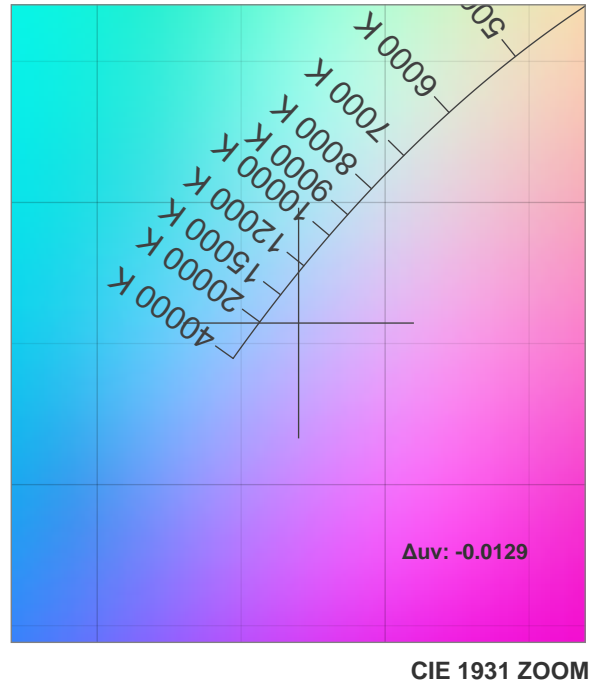
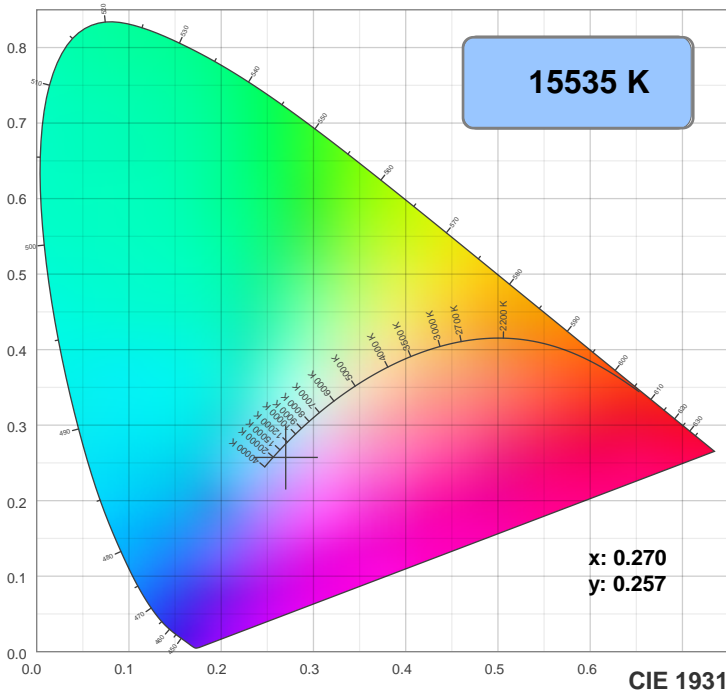
Dominant Wavelength: 463nm



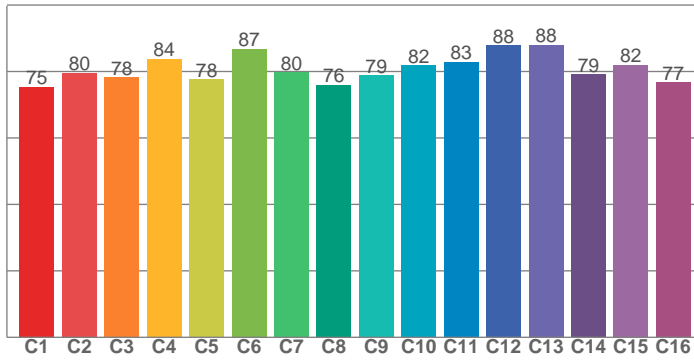
Power



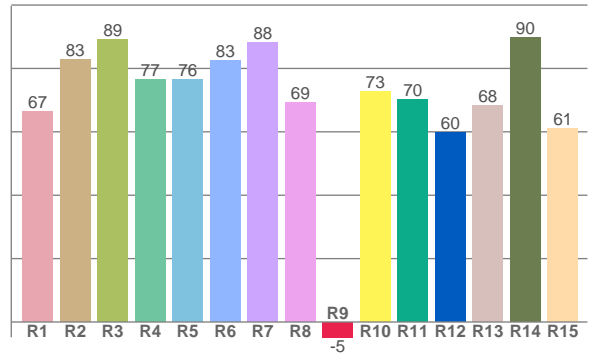
# Color Details



**TM30: 80.7**



**CRI: 78.9 (R1-R8)**



**CRI R values, only R1-R8 are used to calculate final CRI value**

R1	R2	R3	R4	R5	R6	R7	R8	R9	R10	R11	R12	R13	R14	R15
66.6	82.8	89.1	76.5	76.4	82.6	88.3	69.2	-4.8	72.7	70.2	59.8	68.4	89.6	61.2

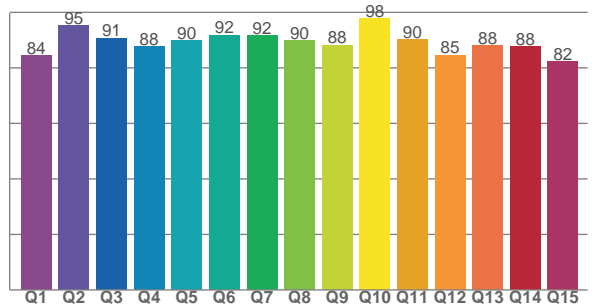
**TM30 C values, 16 binned values out of total of 99 C values**

C1	C2	C3	C4	C5	C6	C7	C8	C9	C10	C11	C12	C13	C14	C15	C16
75.3	79.6	78.3	83.7	77.6	86.8	79.7	76.0	78.8	81.8	82.8	87.8	88.0	79.1	81.9	76.6

**CQS Q values**

Q1	Q2	Q3	Q4	Q5	Q6	Q7	Q8	Q9	Q10	Q11	Q12	Q13	Q14	Q15
84.3	95.2	90.7	87.7	89.9	91.8	91.6	89.7	88.2	97.8	90.2	84.5	88.0	87.6	82.2

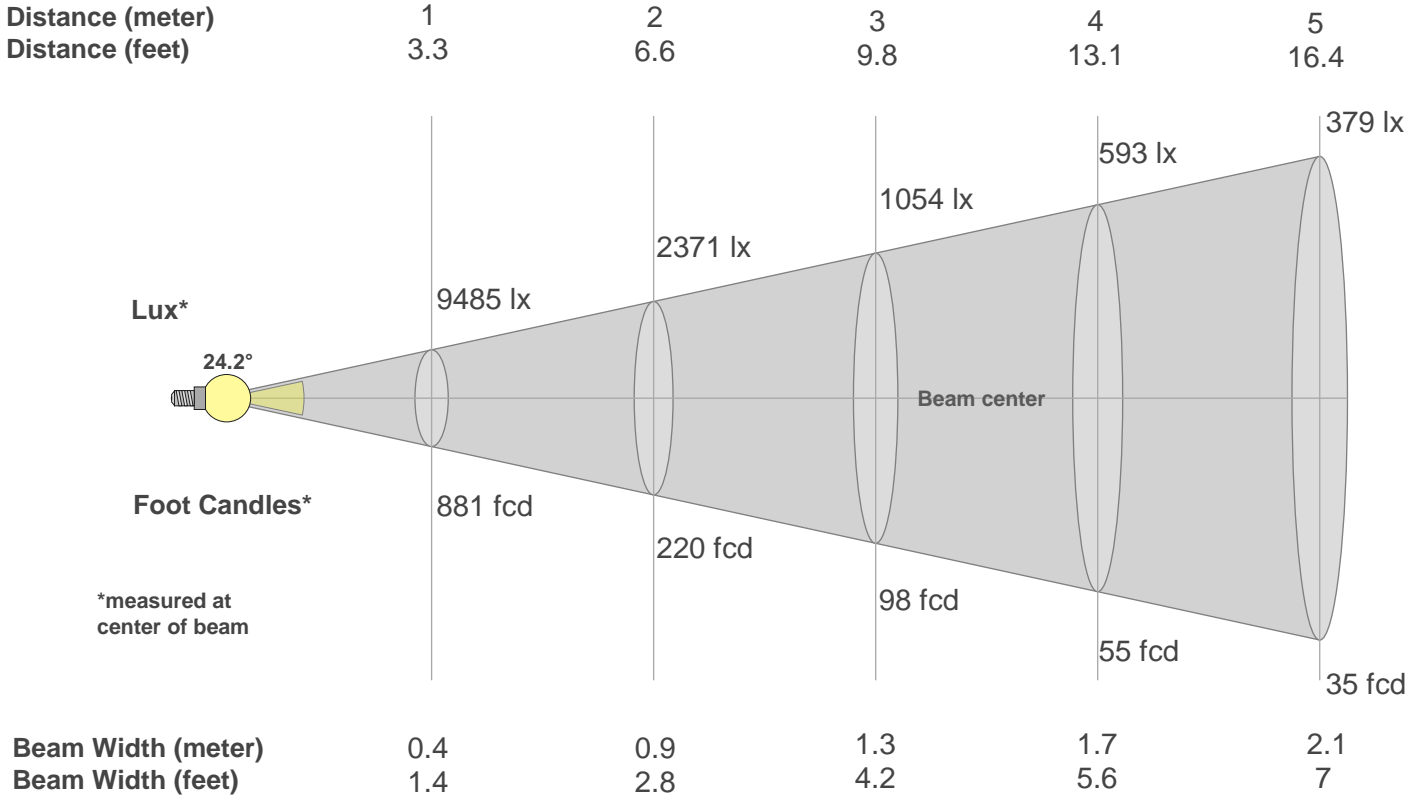
**CQS: 88.6**



## Color Parameters

Color Temperature	Color Rendering Index	Red Component	Color Fidelity	Color Gamut	Color Quality Scale	Color Coordinate CIE 1931	Color Coordinate CIE 1931	Color Coordinate	Color Coordinate	Color Deviation from Black Body
CCT	CRI	CRI R9	TM30 Rf	TM30 Rg	CQS	x	y	u	v	$\Delta uv$
15535 K	78.9	-4.8	80.7	103.3	88.6	0.270	0.257	0.195	0.278	-0.0129

# Beam Details



## Beam Intensities from 1-20m

m	1	2	3	4	5	6	7	8	9	10	11	12	13	14	15	16	17	18	19	20
ft	3.3	6.6	9.8	13.1	16.4	19.7	23	26.2	29.5	32.8	36.1	39.4	42.7	45.9	49.2	52.5	55.8	59.1	62.3	65.6
lx	9485	2371	1054	593	379	263	194	148	117	95	78	66	56	48	42	37	33	29	26	24
fcd	881.2	220.3	97.9	55.1	35.2	24.5	18	13.8	10.9	8.8	7.3	6.1	5.2	4.5	3.9	3.4	3	2.7	2.4	2.2

## Intensities in 0° C-plane

0°	2°	4°	6°	8°	10°	12°	14°	16°	18°	20°	22°	24°	26°	28°	30°	32°	34°	36°	38°
9485	9077	8309	7521	6775	5861	4789	3595	2554	1733	1189	835	597	414	280	191	127	102	81	72
100%	96%	88%	79%	71%	62%	50%	38%	27%	18%	13%	9%	6%	4%	3%	2%	1%	1%	1%	1%

## Intensities in 90° C-plane

0°	2°	4°	6°	8°	10°	12°	14°	16°	18°	20°	22°	24°	26°	28°	30°	32°	34°	36°	38°
9485	9077	8309	7521	6775	5861	4789	3595	2554	1733	1189	835	597	414	280	191	127	102	81	72
100%	96%	88%	79%	71%	62%	50%	38%	27%	18%	13%	9%	6%	4%	3%	2%	1%	1%	1%	1%

## Intensities in 180° C-plane

0°	2°	4°	6°	8°	10°	12°	14°	16°	18°	20°	22°	24°	26°	28°	30°	32°	34°	36°	38°
9485	9146	8354	7536	6742	5869	4790	3629	2556	1757	1198	849	604	421	282	189	131	98	85	72
100%	96%	88%	79%	71%	62%	50%	38%	27%	19%	13%	9%	6%	4%	3%	2%	1%	1%	1%	1%

## Intensities in 270° C-plane

0°	2°	4°	6°	8°	10°	12°	14°	16°	18°	20°	22°	24°	26°	28°	30°	32°	34°	36°	38°
9485	9146	8354	7536	6742	5869	4790	3629	2556	1757	1198	849	604	421	282	189	131	98	85	72
100%	96%	88%	79%	71%	62%	50%	38%	27%	19%	13%	9%	6%	4%	3%	2%	1%	1%	1%	1%

Beam Angle 50%	Field Angle 10%	Cutoff Angle 2,5%	Intensity Ratio in 120° Cone	Intensity Ratio in 90° Cone
24.2°	42.6°	57.7°	86.6%	83.9%