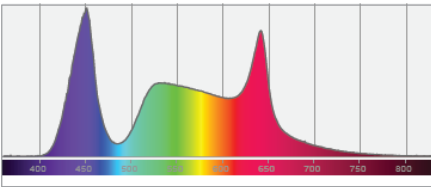
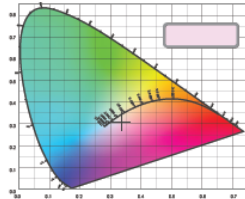


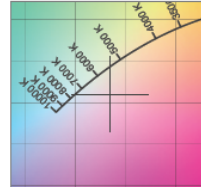
Spectral distribution



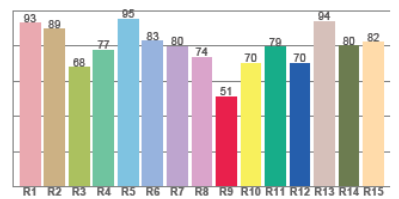
Color coordinates



Zoom color point



CRI R values



Photometric Test Report

*Due to additional product enhancements, an updated version of this report may be available online. Please check www.adj.com for the latest revision/update of this report.

18P Hex IP



Light Efficiency:



Light Quality:



Color Temperature:

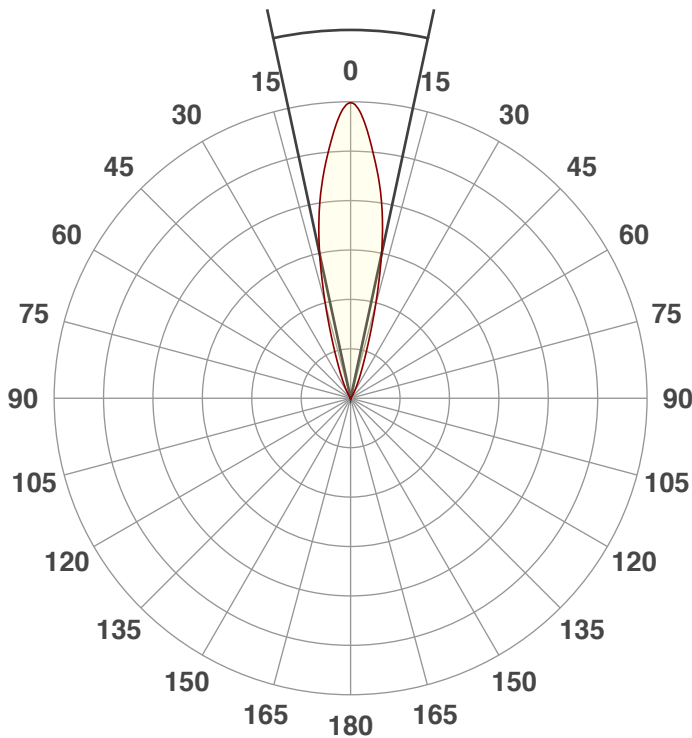


Output: 4392 lm
Peak: 22207 cd
Power: 141 W
PF: 0.99



Beam Angle

24.2°



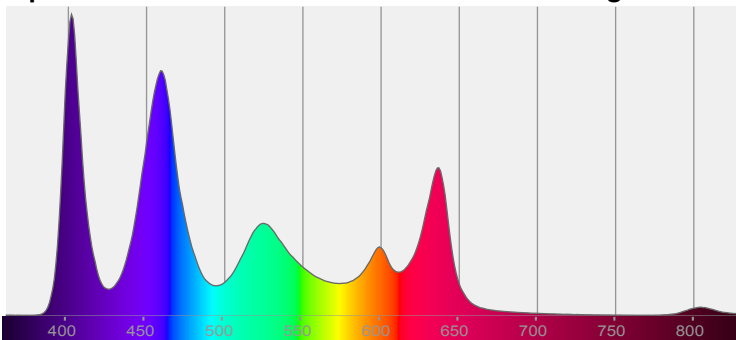
Test: Full On
Date: 6/5/2018
Note:



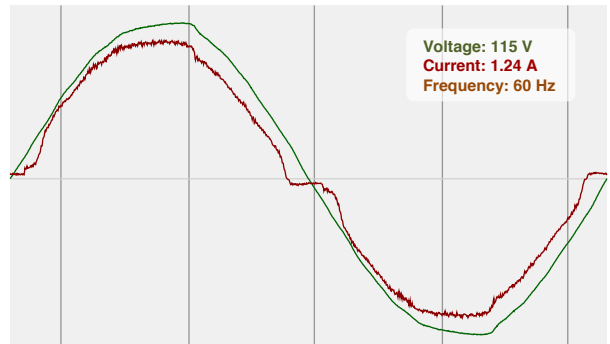
CIE 1931
x: 0.276
y: 0.240

Spectra

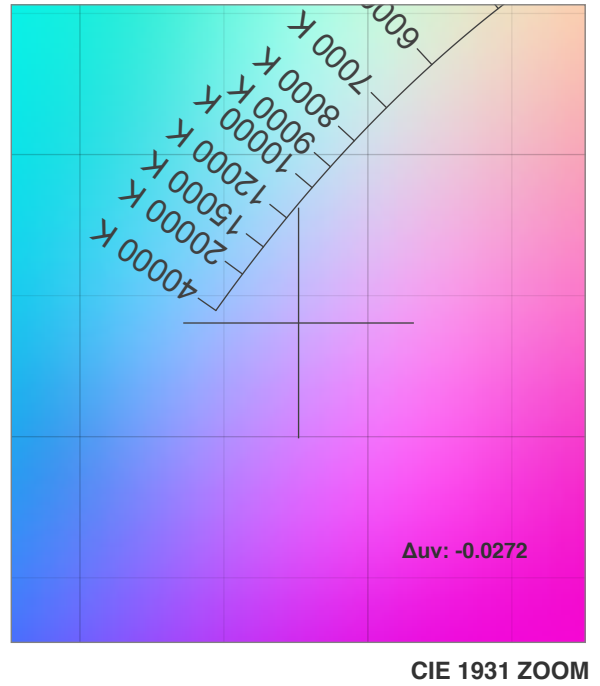
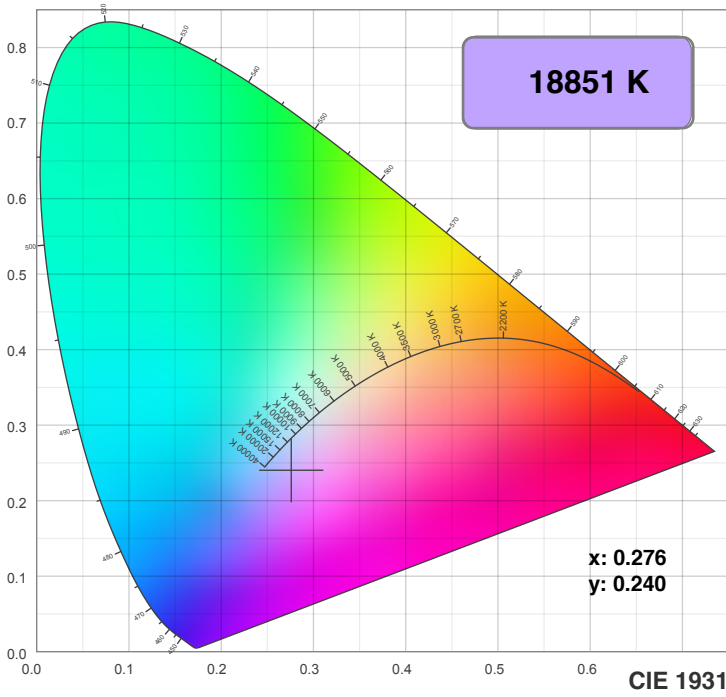
Dominant Wavelength: 360nm



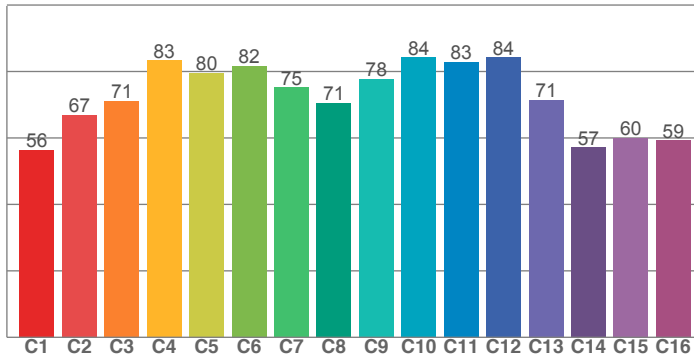
Power



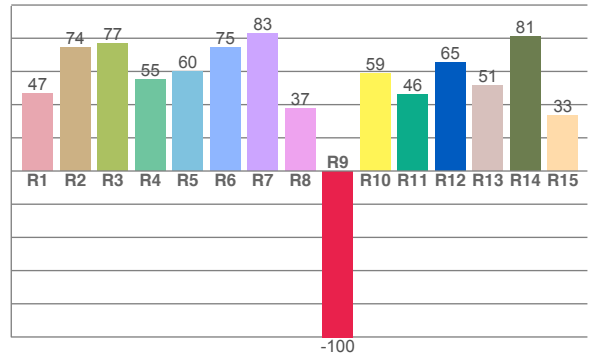
Color Details



TM30: 74.1



CRI: 63.4 (R1-R8)



CRI R values, only R1-R8 are used to calculate final CRI value

R1	R2	R3	R4	R5	R6	R7	R8	R9	R10	R11	R12	R13	R14	R15
46.5	74.4	76.6	55.4	59.8	74.7	82.7	37.5	-100.2	58.8	45.9	65.5	51.3	81.3	33.2

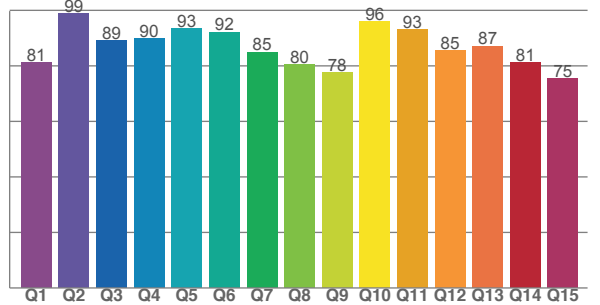
TM30 C values, 16 binned values out of total of 99 C values

C1	C2	C3	C4	C5	C6	C7	C8	C9	C10	C11	C12	C13	C14	C15	C16
56.4	67.0	71.1	83.3	79.5	81.7	75.2	70.5	77.8	84.2	82.9	84.3	71.4	57.1	60.0	59.2

CQS Q values

Q1	Q2	Q3	Q4	Q5	Q6	Q7	Q8	Q9	Q10	Q11	Q12	Q13	Q14	Q15
81.2	98.9	89.1	89.8	93.4	92.2	85.0	80.3	77.5	95.9	93.1	85.4	87.1	81.1	75.4

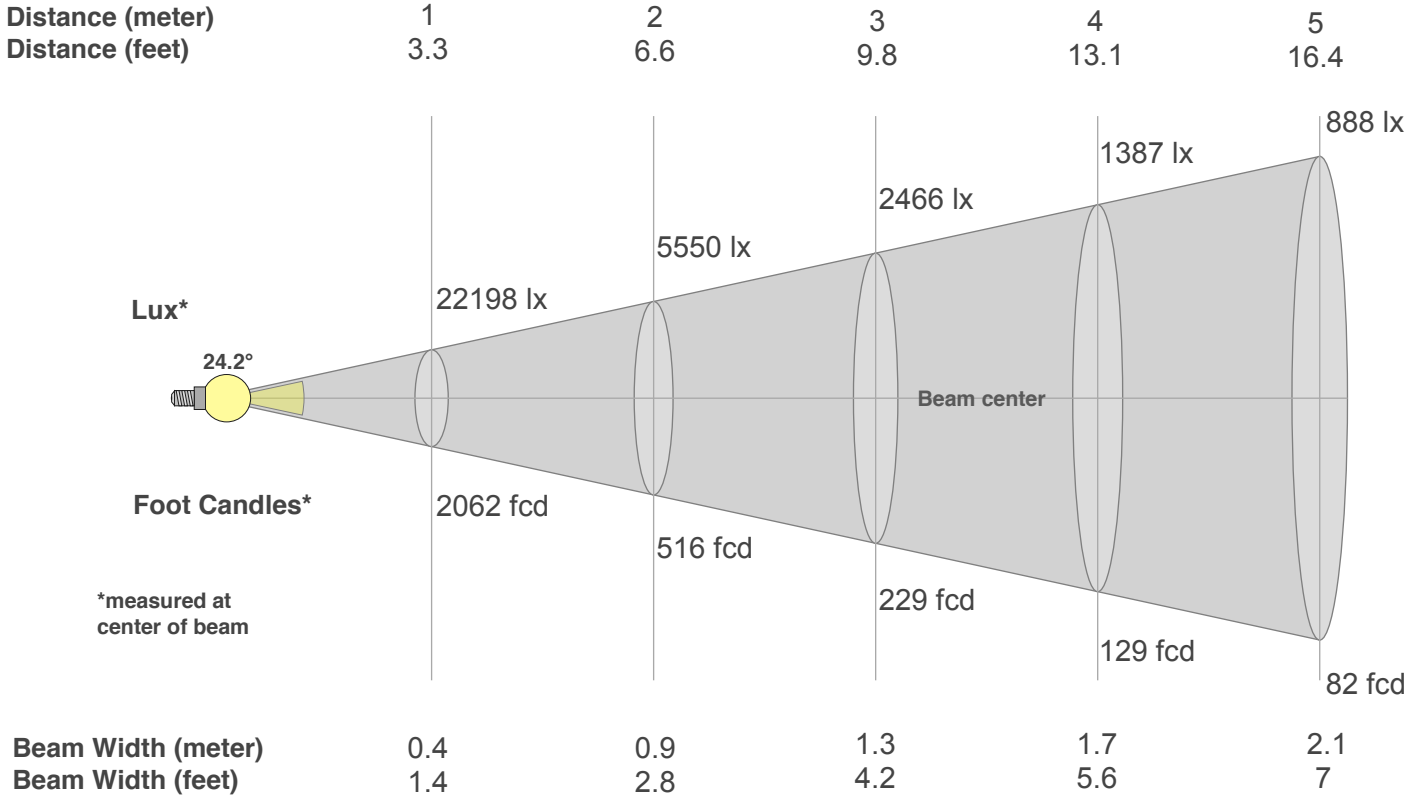
CQS: 85.4



Color Parameters

Color Temperature	Color Rendering Index	Red Component	Color Fidelity	Color Gamut	Color Quality Scale	Color Coordinate CIE 1931	Color Coordinate CIE 1931	Color Coordinate	Color Coordinate	Color Deviation from Black Body
CCT	CRI	CRI R9	TM30 Rf	TM30 Rg	CQS	x	y	u	v	Δuv
18851 K	63.4	-100.2	74.1	113.2	85.4	0.276	0.240	0.207	0.270	-0.0272

Beam Details



Beam Intensities from 1-20m

m	1	2	3	4	5	6	7	8	9	10	11	12	13	14	15	16	17	18	19	20
ft	3.3	6.6	9.8	13.1	16.4	19.7	23	26.2	29.5	32.8	36.1	39.4	42.7	45.9	49.2	52.5	55.8	59.1	62.3	65.6
lx	22198	5550	2466	1387	888	617	453	347	274	222	183	154	131	113	99	87	77	69	61	55
fcd	2062.3	515.6	229.1	128.9	82.5	57.3	42.1	32.2	25.5	20.6	17	14.3	12.2	10.5	9.2	8.1	7.1	6.4	5.7	5.2

Intensities in 0° C-plane

0°	2°	4°	6°	8°	10°	12°	14°	16°	18°	20°	22°	24°	26°	28°	30°	32°	34°	36°	38°
22.2K	21.5K	19.8K	17.9K	15.9K	13.7K	11.3K	8.6K	6.2K	4.3K	2.9K	2.1K	1.5K	1.0K	0.7K	0.4K	0.3K	0.2K	0.1K	0.1K
100%	97%	89%	80%	72%	62%	51%	39%	28%	19%	13%	9%	7%	5%	3%	2%	1%	1%	1%	0%

Intensities in 90° C-plane

0°	2°	4°	6°	8°	10°	12°	14°	16°	18°	20°	22°	24°	26°	28°	30°	32°	34°	36°	38°
22.2K	21.5K	19.8K	17.9K	15.9K	13.7K	11.3K	8.6K	6.2K	4.3K	2.9K	2.1K	1.5K	1.0K	0.7K	0.4K	0.3K	0.2K	0.1K	0.1K
100%	97%	89%	80%	72%	62%	51%	39%	28%	19%	13%	9%	7%	5%	3%	2%	1%	1%	1%	0%

Intensities in 180° C-plane

0°	2°	4°	6°	8°	10°	12°	14°	16°	18°	20°	22°	24°	26°	28°	30°	32°	34°	36°	38°
22.2K	21.5K	19.8K	17.9K	16.0K	13.8K	11.3K	8.6K	6.1K	4.2K	2.9K	2.1K	1.5K	1.0K	0.7K	0.4K	0.3K	0.2K	0.1K	0.1K
100%	97%	89%	80%	72%	62%	51%	39%	27%	19%	13%	9%	7%	5%	3%	2%	1%	1%	1%	0%

Intensities in 270° C-plane

0°	2°	4°	6°	8°	10°	12°	14°	16°	18°	20°	22°	24°	26°	28°	30°	32°	34°	36°	38°
22.2K	21.5K	19.8K	17.9K	16.0K	13.8K	11.3K	8.6K	6.1K	4.2K	2.9K	2.1K	1.5K	1.0K	0.7K	0.4K	0.3K	0.2K	0.1K	0.1K
100%	97%	89%	80%	72%	62%	51%	39%	27%	19%	13%	9%	7%	5%	3%	2%	1%	1%	1%	0%

Beam Angle 50%	Field Angle 10%	Cutoff Angle 2,5%	Intensity Ratio in 120° Cone	Intensity Ratio in 90° Cone
24.2°	43.2°	57.9°	99.9%	99.5%

18P Hex IP



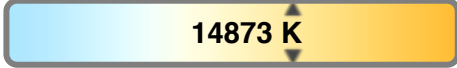
Light Efficiency:



Light Quality:



Color Temperature:



Output: 4307 lm

Peak: 21815 cd

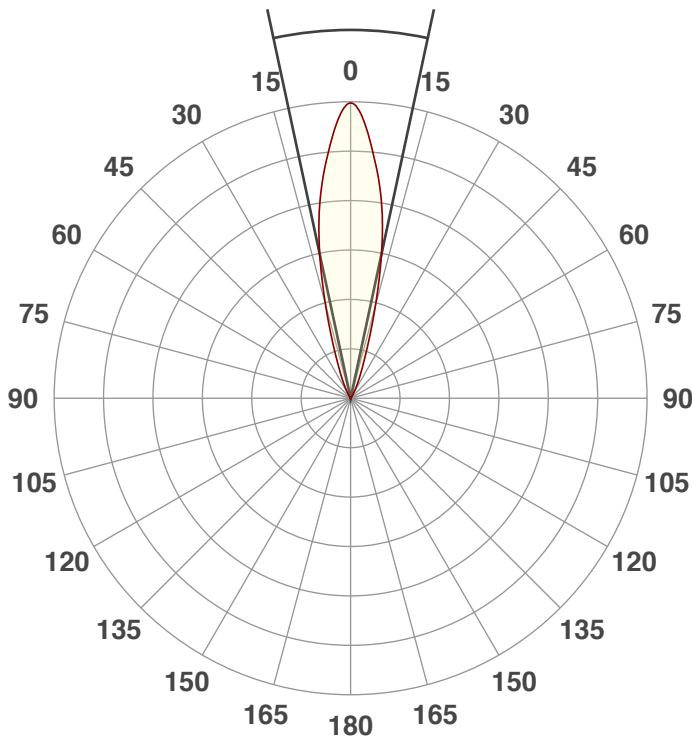
Power: 112 W

PF: 0.99



Beam Angle

24.2°

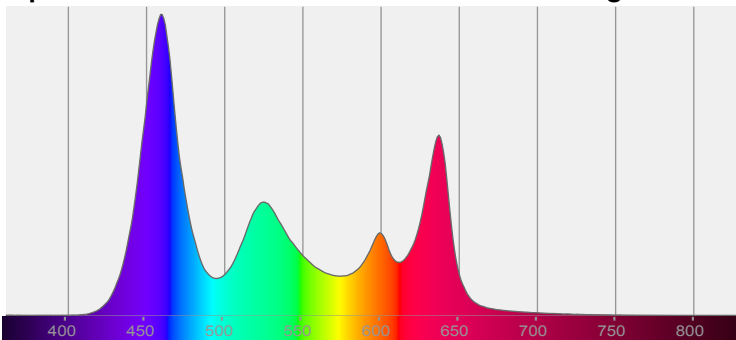


Test: Full On No UV
Date: 6/5/2018
Note:

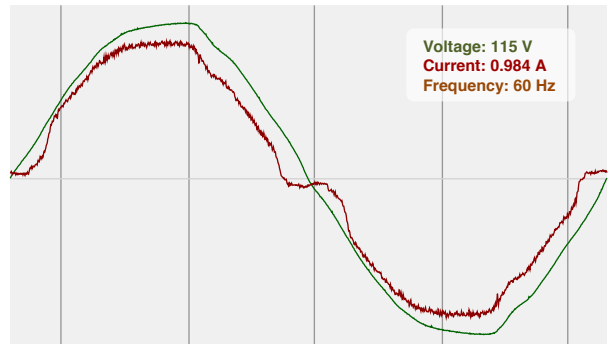


CIE 1931
x: 0.279
y: 0.249

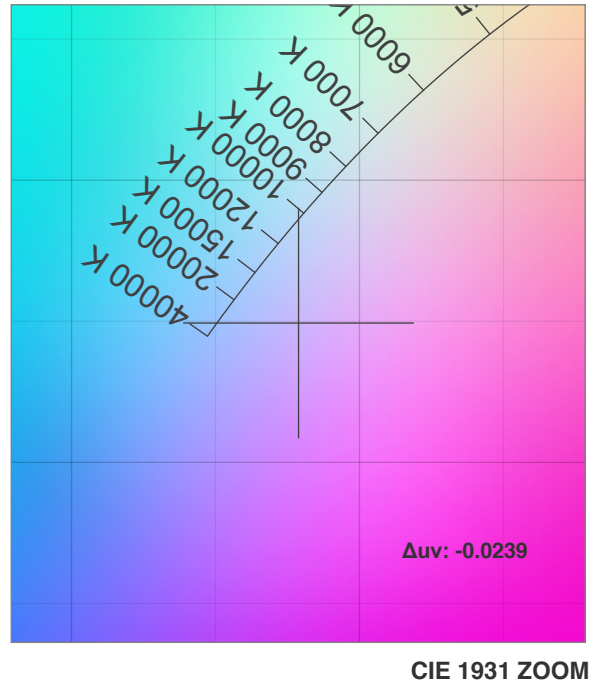
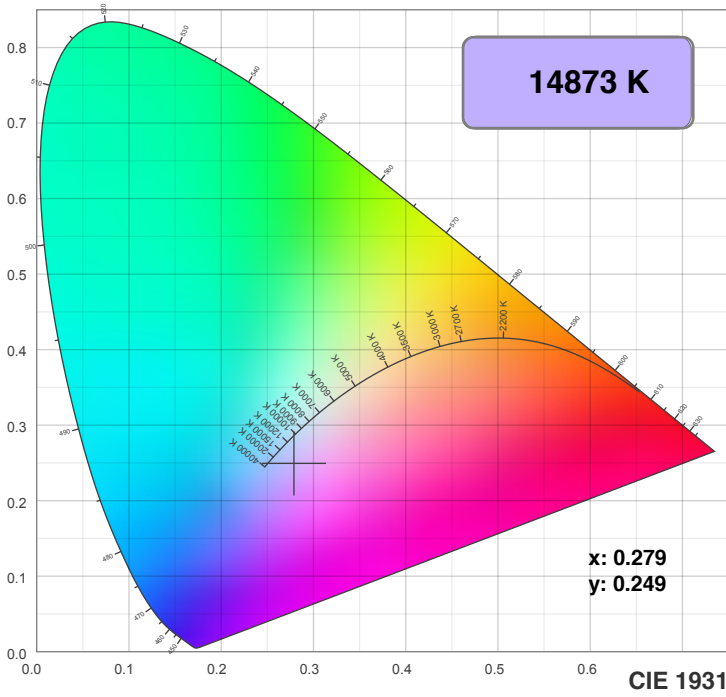
Spectra Dominant Wavelength: 367nm



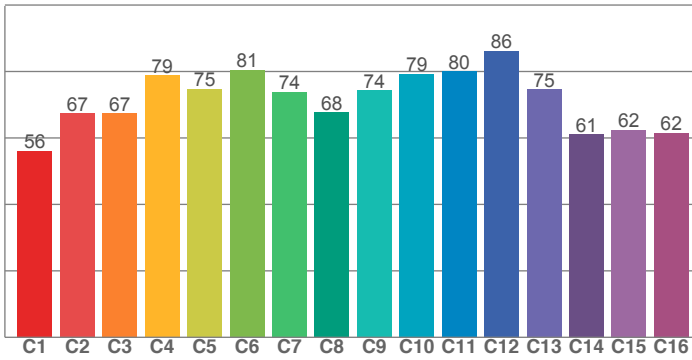
Power



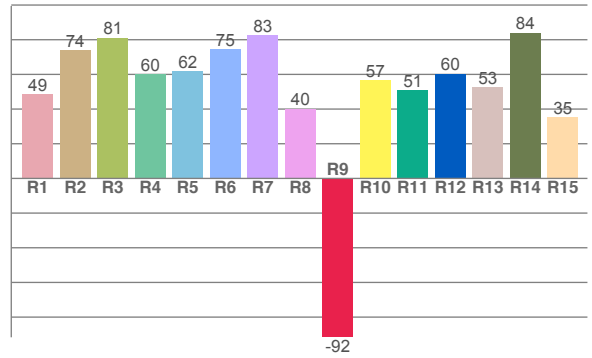
Color Details



TM30: 72.5



CRI: 65.4 (R1-R8)



CRI R values, only R1-R8 are used to calculate final CRI value

R1	R2	R3	R4	R5	R6	R7	R8	R9	R10	R11	R12	R13	R14	R15
48.7	74.0	81.2	59.9	61.7	74.6	82.6	40.1	-91.6	56.6	50.9	60.3	52.6	84.0	35.4

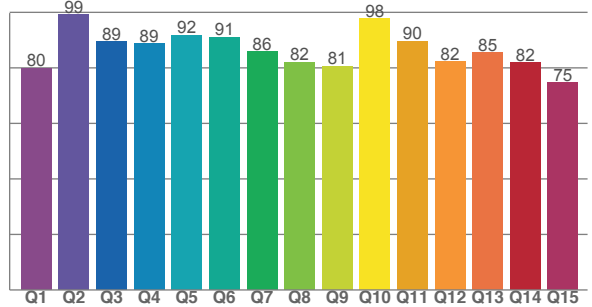
TM30 C values, 16 binned values out of total of 99 C values

C1	C2	C3	C4	C5	C6	C7	C8	C9	C10	C11	C12	C13	C14	C15	C16
56.0	67.5	67.5	78.8	74.7	80.5	73.9	67.7	74.3	79.3	80.0	86.3	74.6	61.1	62.4	61.6

CQS Q values

Q1	Q2	Q3	Q4	Q5	Q6	Q7	Q8	Q9	Q10	Q11	Q12	Q13	Q14	Q15
79.9	99.2	89.4	88.8	91.8	91.1	85.8	82.0	80.6	97.6	89.6	82.3	85.4	81.9	74.6

CQS: 85.2



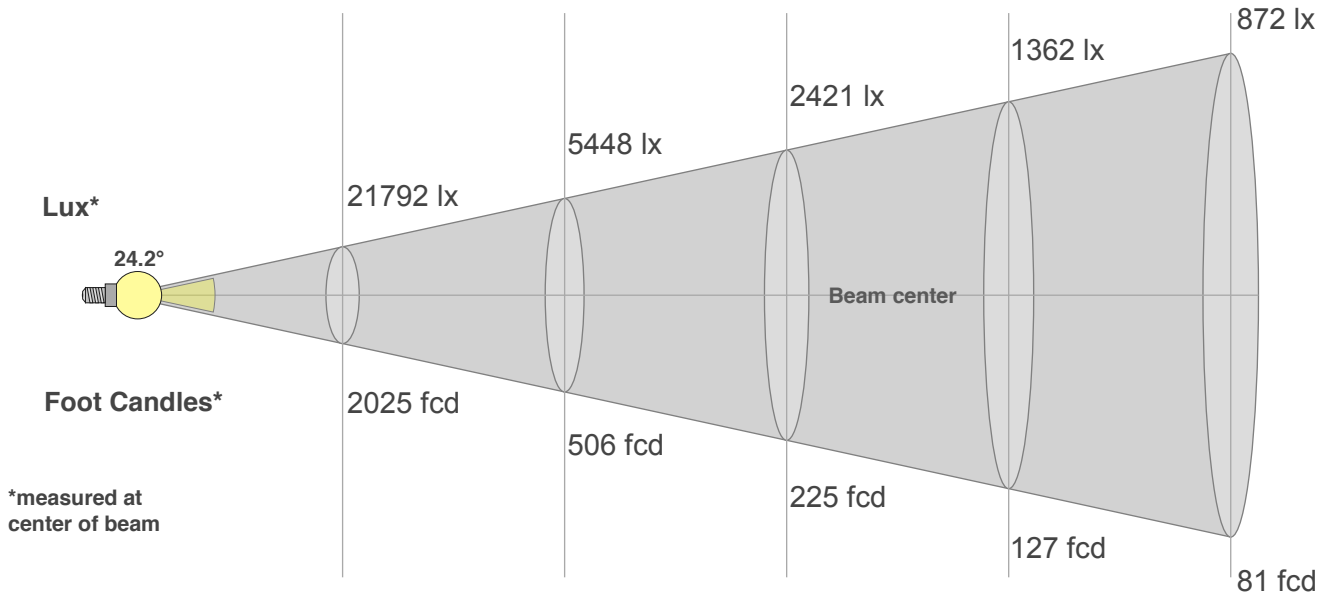
Color Parameters

Color Temperature	Color Rendering Index	Red Component	Color Fidelity	Color Gamut	Color Quality Scale	Color Coordinate CIE 1931	Color Coordinate CIE 1931	Color Coordinate	Color Coordinate	Color Deviation from Black Body
CCT	CRI	CRI R9	TM30 Rf	TM30 Rg	CQS	x	y	u	v	Δuv
14873 K	65.4	-91.6	72.5	109.4	85.2	0.279	0.249	0.205	0.275	-0.0239

Beam Details

Distance (meter)
Distance (feet)

1 2 3 4 5
3.3 6.6 9.8 13.1 16.4



Beam Width (meter)
Beam Width (feet)

0.4 0.9 1.3 1.7 2.1
1.4 2.8 4.2 5.6 7

Beam Intensities from 1-20m

m	1	2	3	4	5	6	7	8	9	10	11	12	13	14	15	16	17	18	19	20
ft	3.3	6.6	9.8	13.1	16.4	19.7	23	26.2	29.5	32.8	36.1	39.4	42.7	45.9	49.2	52.5	55.8	59.1	62.3	65.6
lx	21792	5448	2421	1362	872	605	445	340	269	218	180	151	129	111	97	85	75	67	60	54
fcd	2024.5	506.1	224.9	126.5	81	56.2	41.3	31.6	25	20.2	16.7	14.1	12	10.3	9	7.9	7	6.2	5.6	5.1

Intensities in 0° C-plane

0°	2°	4°	6°	8°	10°	12°	14°	16°	18°	20°	22°	24°	26°	28°	30°	32°	34°	36°	38°
21.8K	21.1K	19.4K	17.5K	15.6K	13.5K	11.0K	8.4K	6.1K	4.2K	2.9K	2.0K	1.4K	1.0K	0.7K	0.4K	0.3K	0.2K	0.1K	0.1K
100%	97%	89%	80%	72%	62%	51%	39%	28%	19%	13%	9%	7%	5%	3%	2%	1%	1%	1%	0%

Intensities in 90° C-plane

0°	2°	4°	6°	8°	10°	12°	14°	16°	18°	20°	22°	24°	26°	28°	30°	32°	34°	36°	38°
21.8K	21.1K	19.4K	17.5K	15.6K	13.5K	11.0K	8.4K	6.1K	4.2K	2.9K	2.0K	1.4K	1.0K	0.7K	0.4K	0.3K	0.2K	0.1K	0.1K
100%	97%	89%	80%	72%	62%	51%	39%	28%	19%	13%	9%	7%	5%	3%	2%	1%	1%	1%	0%

Intensities in 180° C-plane

0°	2°	4°	6°	8°	10°	12°	14°	16°	18°	20°	22°	24°	26°	28°	30°	32°	34°	36°	38°
21.8K	21.1K	19.4K	17.5K	15.7K	13.5K	11.0K	8.4K	6.0K	4.1K	2.8K	2.0K	1.5K	1.0K	0.7K	0.4K	0.3K	0.2K	0.1K	0.1K
100%	97%	89%	80%	72%	62%	51%	38%	27%	19%	13%	9%	7%	5%	3%	2%	1%	1%	1%	0%

Intensities in 270° C-plane

0°	2°	4°	6°	8°	10°	12°	14°	16°	18°	20°	22°	24°	26°	28°	30°	32°	34°	36°	38°
21.8K	21.1K	19.4K	17.5K	15.7K	13.5K	11.0K	8.4K	6.0K	4.1K	2.8K	2.0K	1.5K	1.0K	0.7K	0.4K	0.3K	0.2K	0.1K	0.1K
100%	97%	89%	80%	72%	62%	51%	38%	27%	19%	13%	9%	7%	5%	3%	2%	1%	1%	1%	0%

Beam Angle 50%	Field Angle 10%	Cutoff Angle 2,5%	Intensity Ratio in 120° Cone	Intensity Ratio in 90° Cone
24.2°	43.2°	57.9°	99.9%	99.5%

18P Hex IP



Light Efficiency:

33 Lumen/Watt

Dominant Wavelength:

623 nm

Output:

664 lm

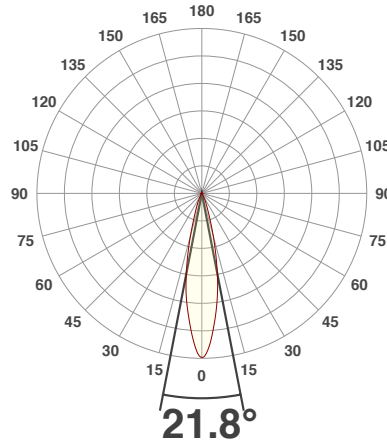
Power:

19.9 W

Peak:

3878 cd

Beam Angle



Test:

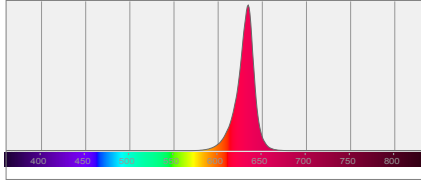
Red

Date:

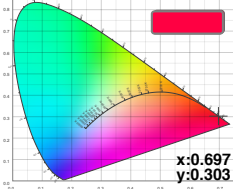
6/5/2018

Note:

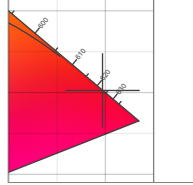
Spectral Distribution



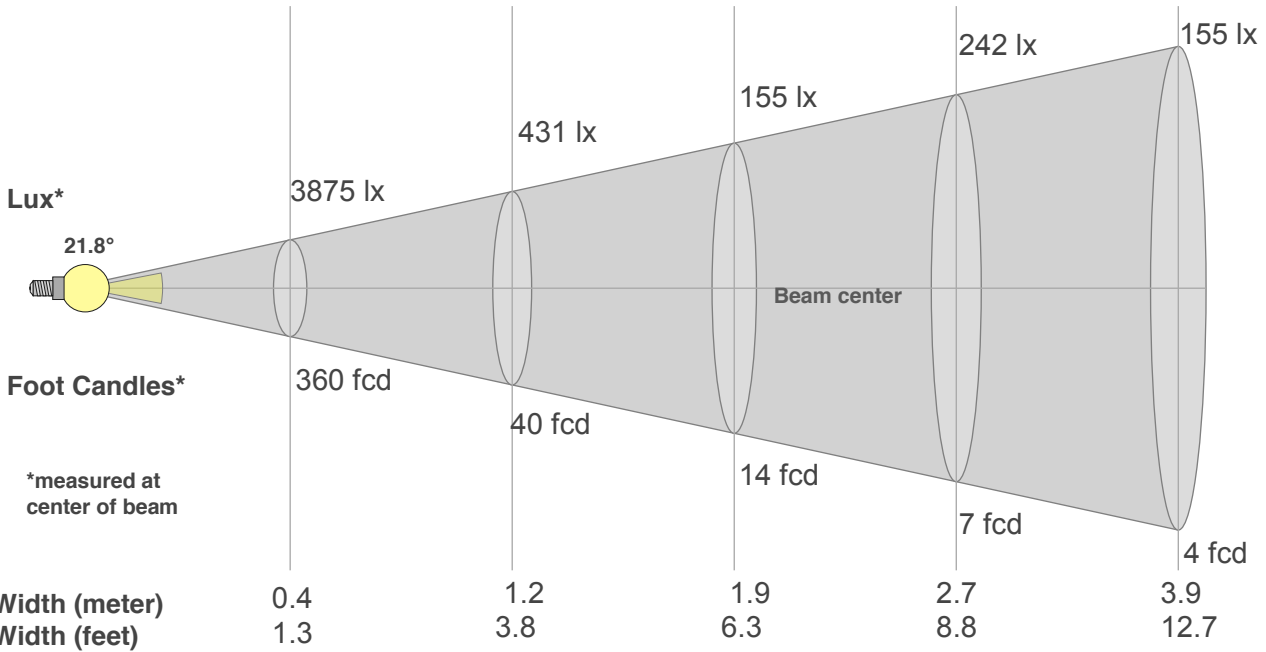
Color Coordinates



Zoom Color Point



Distance (meter)	1	3	5	7	10
Distance (feet)	3.3	9.8	16.4	22.9	32.8



Beam Angle 50%	Field Angle 10%	Cutoff Angle 2,5%	Intensity Ratio in 120° Cone	Intensity Ratio in 90° Cone
21.8°	40.4°	55.8°	99.8%	99.5%

Beam Intensities from 1-20m

m	1	2	3	4	5	6	7	8	9	10	11	12	13	14	15	16	17	18	19	20
ft	3.3	6.6	9.8	13.1	16.4	19.7	23	26.2	29.5	32.8	36.1	39.4	42.7	45.9	49.2	52.5	55.8	59.1	62.3	65.6
lx	3875	969	431	242	155	108	79	61	48	39	32	27	23	20	17	15	13	12	11	10
fcd	360	90	40	22.5	14.4	10	7.3	5.6	4.4	3.6	3	2.5	2.1	1.8	1.6	1.4	1.2	1.1	1	0.9

18P Hex IP



Light Efficiency:

55 Lumen/Watt

Dominant Wavelength:

530 nm

Output:

1596 lm

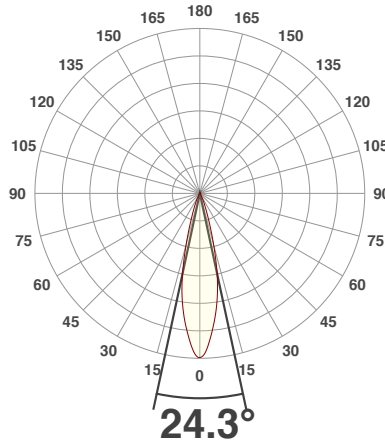
Power:

29.0 W

Peak:

8138 cd

Beam Angle



Test:

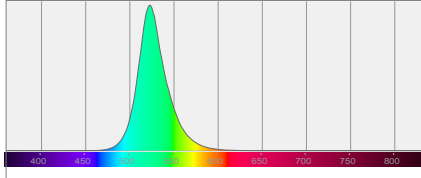
Green

Date:

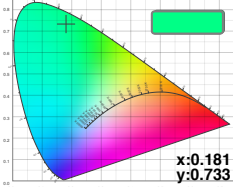
6/5/2018

Note:

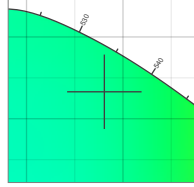
Spectral Distribution



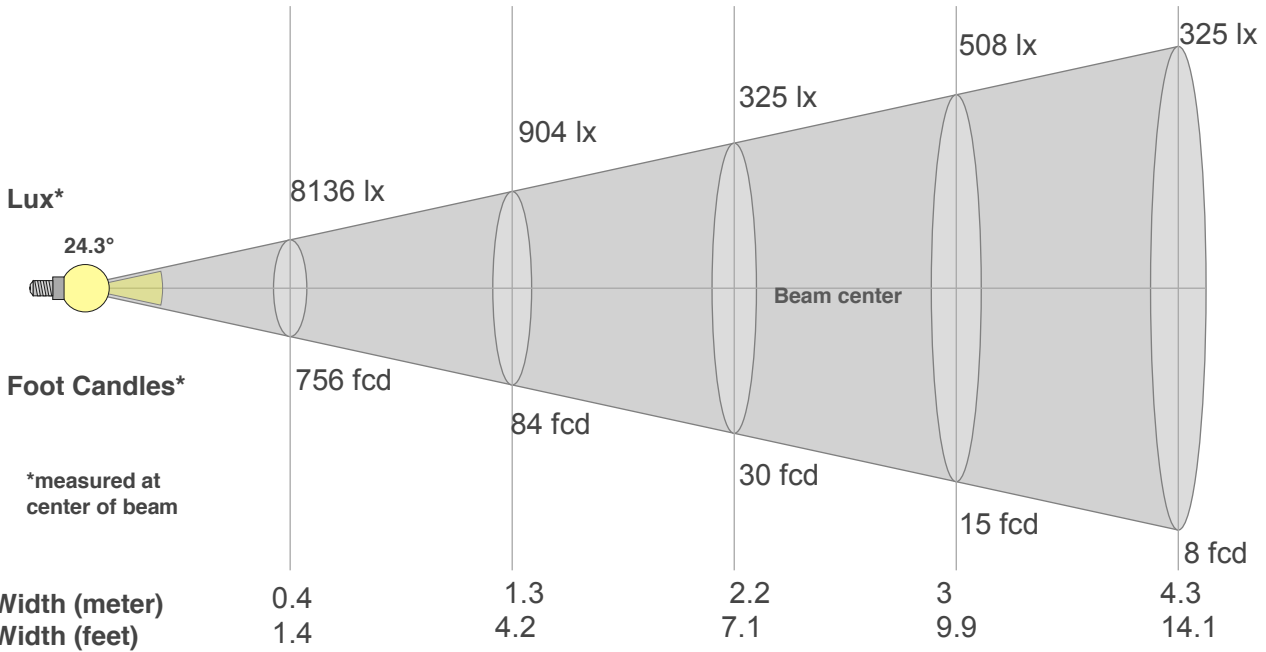
Color Coordinates



Zoom Color Point



Distance (meter)	1	3	5	7	10
Distance (feet)	3.3	9.8	16.4	22.9	32.8



Beam Angle 50%	Field Angle 10%	Cutoff Angle 2,5%	Intensity Ratio in 120° Cone	Intensity Ratio in 90° Cone
24.3°	42.2°	56.9°	99.6%	98.8%

Beam Intensities from 1-20m

m	1	2	3	4	5	6	7	8	9	10	11	12	13	14	15	16	17	18	19	20
ft	3.3	6.6	9.8	13.1	16.4	19.7	23	26.2	29.5	32.8	36.1	39.4	42.7	45.9	49.2	52.5	55.8	59.1	62.3	65.6
lx	8136	2034	904	508	325	226	166	127	100	81	67	56	48	42	36	32	28	25	23	20
fcd	755.9	189	84	47.2	30.2	21	15.4	11.8	9.3	7.6	6.2	5.2	4.5	3.9	3.4	3	2.6	2.3	2.1	1.9

18P Hex IP



Light Efficiency:

11 Lumen/Watt

Dominant Wavelength:

463 nm

Output:

354 lm

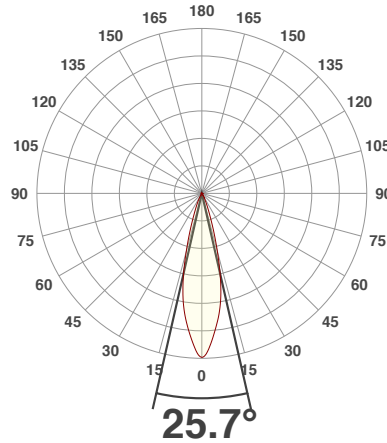
Power:

30.8 W

Peak:

1653 cd

Beam Angle



Test:

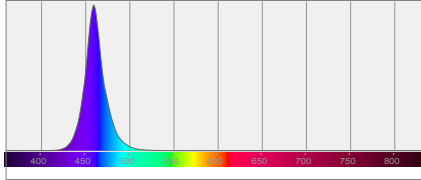
Blue

Date:

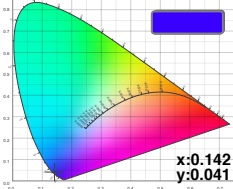
6/5/2018

Note:

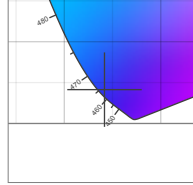
Spectral Distribution



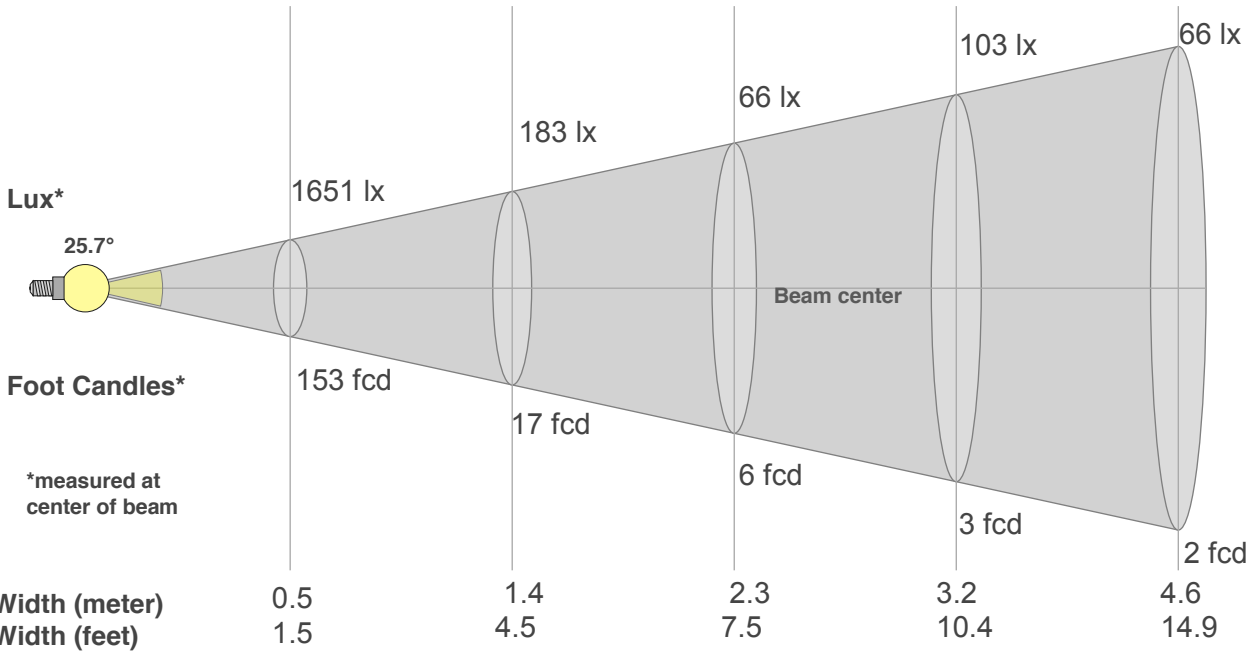
Color Coordinates



Zoom Color Point



Distance (meter)	1	3	5	7	10
Distance (feet)	3.3	9.8	16.4	22.9	32.8



Beam Angle 50%	Field Angle 10%	Cutoff Angle 2,5%	Intensity Ratio in 120° Cone	Intensity Ratio in 90° Cone
25.7°	44°	58.5°	99.3%	98.5%

Beam Intensities from 1-20m

m	1	2	3	4	5	6	7	8	9	10	11	12	13	14	15	16	17	18	19	20
ft	3.3	6.6	9.8	13.1	16.4	19.7	23	26.2	29.5	32.8	36.1	39.4	42.7	45.9	49.2	52.5	55.8	59.1	62.3	65.6
lx	1651	413	183	103	66	46	34	26	20	17	14	11	10	8	7	6	6	5	5	4
fcd	153.4	38.3	17	9.6	6.1	4.3	3.1	2.4	1.9	1.5	1.3	1.1	0.9	0.8	0.7	0.6	0.5	0.5	0.4	0.4

18P Hex IP



Light Efficiency:



Light Quality:



Color Temperature:



Output: 634 lm

Peak: 2845 cd

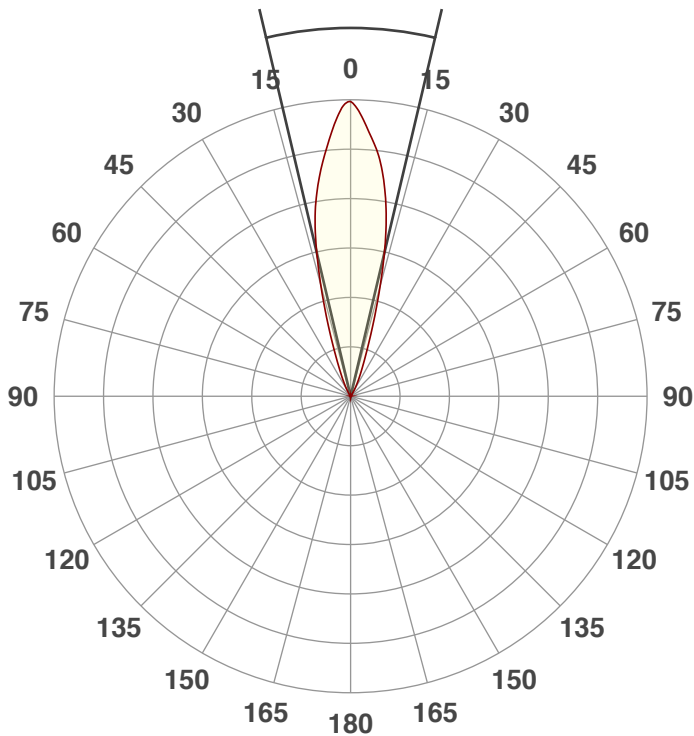
Power: 20.9 W

PF: 0.91



Beam Angle

26.5°



Test:

Amber

Date:

6/5/2018

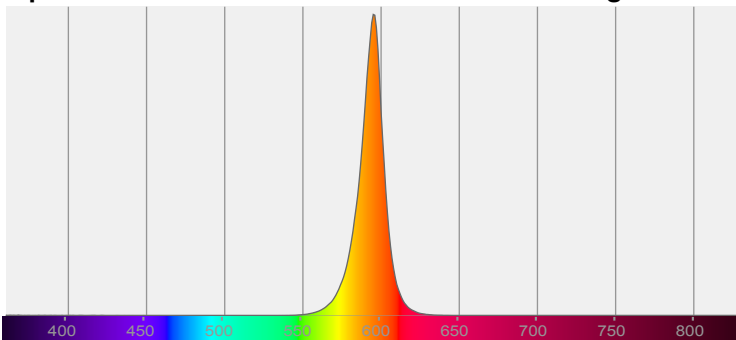
Note:



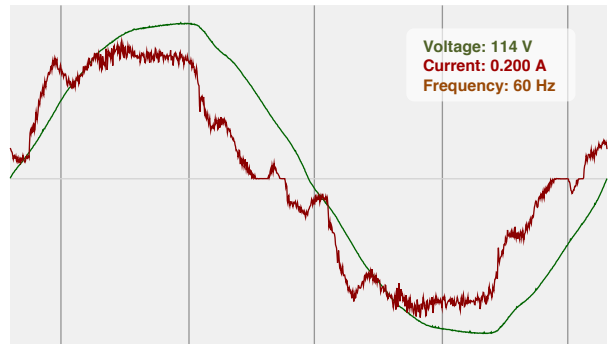
CIE 1931
x: 0.586
y: 0.413

Spectra

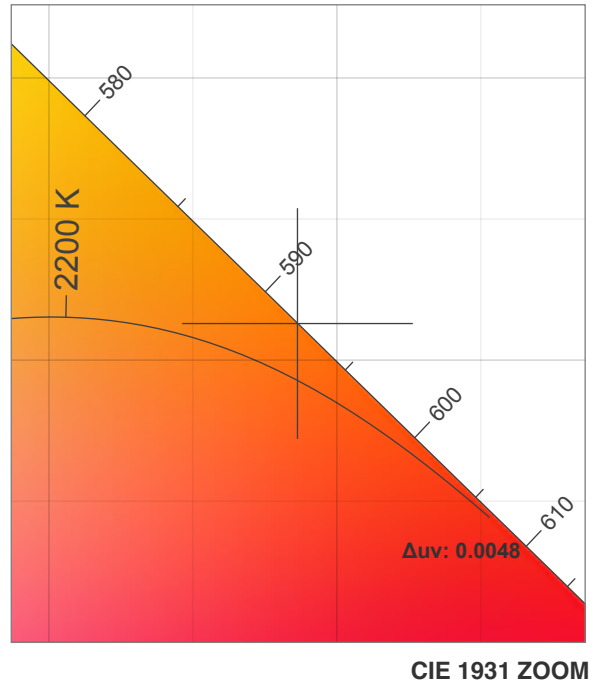
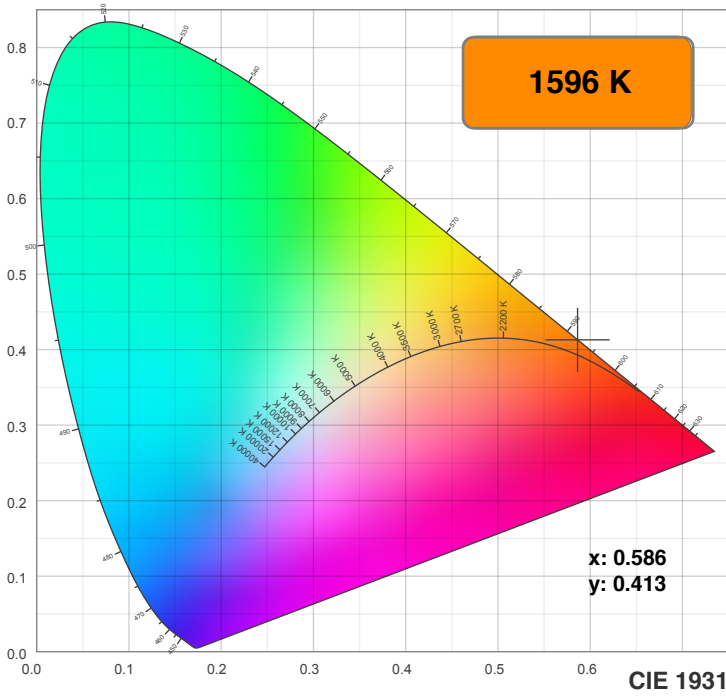
Dominant Wavelength: 592nm



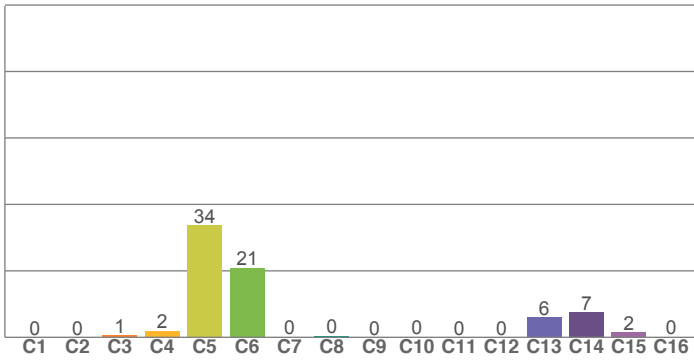
Power



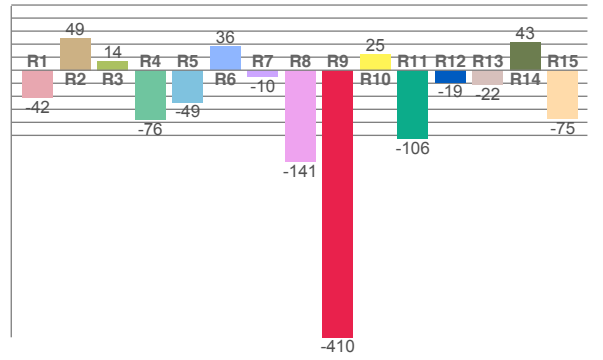
Color Details



TM30: 0.2



CRI: -27.3 (R1-R8)



CRI R values, only R1-R8 are used to calculate final CRI value

R1	R2	R3	R4	R5	R6	R7	R8	R9	R10	R11	R12	R13	R14	R15
-42.2	49.2	14.1	-75.9	-49.1	36.3	-10.0	-141.0	-409.9	24.8	-105.6	-18.7	-22.0	43.4	-74.8

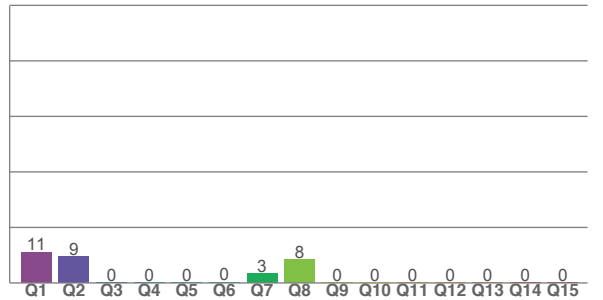
TM30 C values, 16 binned values out of total of 99 C values

C1	C2	C3	C4	C5	C6	C7	C8	C9	C10	C11	C12	C13	C14	C15	C16
0.0	0.0	0.6	1.9	33.6	20.8	0.1	0.4	0.0	0.1	0.0	0.0	6.0	7.5	1.5	0.2

CQS Q values

Q1	Q2	Q3	Q4	Q5	Q6	Q7	Q8	Q9	Q10	Q11	Q12	Q13	Q14	Q15
11.1	9.4	0.0	0.0	0.1	0.3	3.4	8.4	0.0	0.0	0.0	0.0	0.0	0.0	0.1

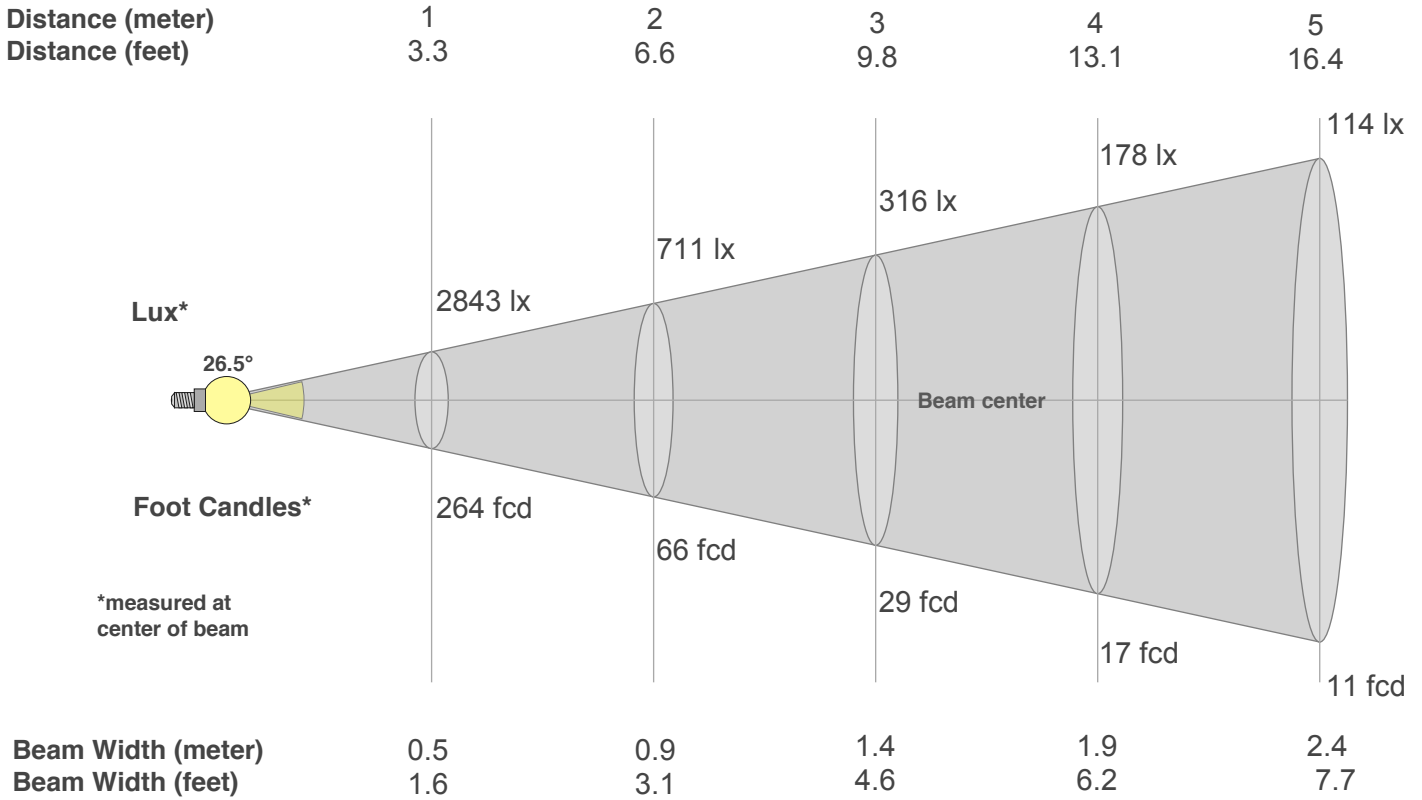
CQS: 0.0



Color Parameters

Color Temperature	Color Rendering Index	Red Component	Color Fidelity	Color Gamut	Color Quality Scale	Color Coordinate CIE 1931	Color Coordinate CIE 1931	Color Coordinate	Color Coordinate	Color Deviation from Black Body
CCT	CRI	CRI R9	TM30 Rf	TM30 Rg	CQS	x	y	u	v	Δuv
1596 K	-27.3	-409.9	0.2	0.9	0.0	0.586	0.413	0.346	0.365	0.0048

Beam Details



Beam Intensities from 1-20m

m	1	2	3	4	5	6	7	8	9	10	11	12	13	14	15	16	17	18	19	20
ft	3.3	6.6	9.8	13.1	16.4	19.7	23	26.2	29.5	32.8	36.1	39.4	42.7	45.9	49.2	52.5	55.8	59.1	62.3	65.6
lx	2843	711	316	178	114	79	58	44	35	28	23	20	17	15	13	11	10	9	8	7
fcd	264.1	66	29.3	16.5	10.6	7.3	5.4	4.1	3.3	2.6	2.2	1.8	1.6	1.3	1.2	1	0.9	0.8	0.7	0.7

Intensities in 0° C-plane

0°	2°	4°	6°	8°	10°	12°	14°	16°	18°	20°	22°	24°	26°	28°	30°	32°	34°	36°	38°
2843	2759	2568	2358	2150	1920	1641	1292	944	652	434	296	209	146	97	63	41	28	20	16
100%	97%	90%	83%	76%	68%	58%	45%	33%	23%	15%	10%	7%	5%	3%	2%	1%	1%	1%	1%

Intensities in 90° C-plane

0°	2°	4°	6°	8°	10°	12°	14°	16°	18°	20°	22°	24°	26°	28°	30°	32°	34°	36°	38°
2843	2759	2568	2358	2150	1920	1641	1292	944	652	434	296	209	146	97	63	41	28	20	16
100%	97%	90%	83%	76%	68%	58%	45%	33%	23%	15%	10%	7%	5%	3%	2%	1%	1%	1%	1%

Intensities in 180° C-plane

0°	2°	4°	6°	8°	10°	12°	14°	16°	18°	20°	22°	24°	26°	28°	30°	32°	34°	36°	38°
2843	2724	2555	2393	2195	1940	1642	1287	929	644	438	313	227	163	113	74	46	30	22	17
100%	96%	90%	84%	77%	68%	58%	45%	33%	23%	15%	11%	8%	6%	4%	3%	2%	1%	1%	1%

Intensities in 270° C-plane

0°	2°	4°	6°	8°	10°	12°	14°	16°	18°	20°	22°	24°	26°	28°	30°	32°	34°	36°	38°
2843	2724	2555	2393	2195	1940	1642	1287	929	644	438	313	227	163	113	74	46	30	22	17
100%	96%	90%	84%	77%	68%	58%	45%	33%	23%	15%	11%	8%	6%	4%	3%	2%	1%	1%	1%

Beam Angle 50%	Field Angle 10%	Cutoff Angle 2,5%	Intensity Ratio in 120° Cone	Intensity Ratio in 90° Cone
26.5°	44.8°	59.6°	99.7%	99.0%

18P Hex IP



Light Efficiency:



Light Quality:



Color Temperature:



Output: 1639 lm

Peak: 7875 cd

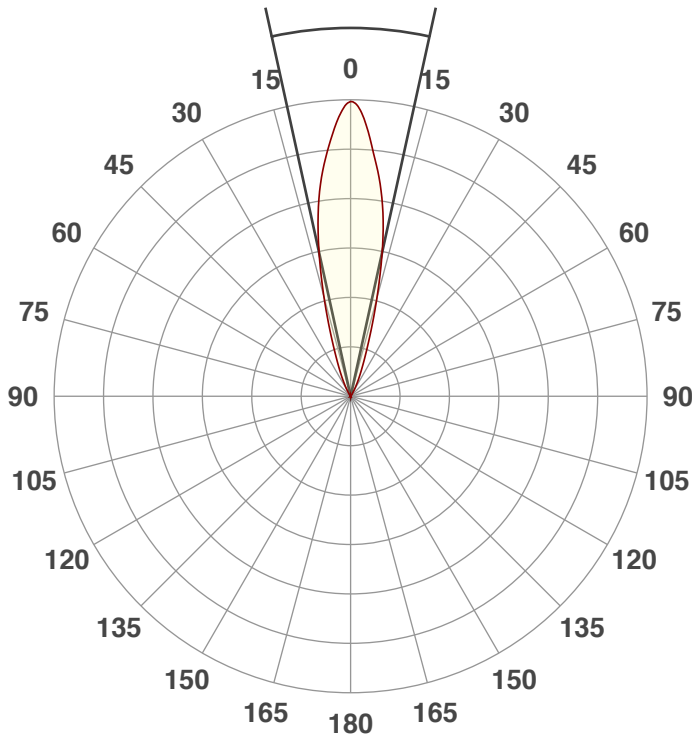
Power: 28.8 W

PF: 0.95



Beam Angle

24.7°



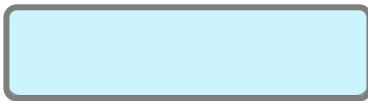
Test:

White

Date:

6/5/2018

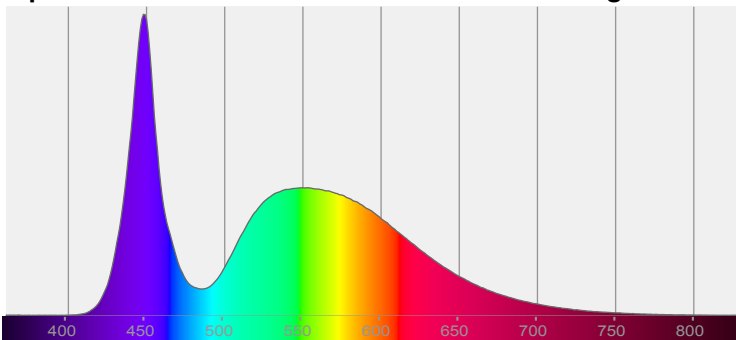
Note:



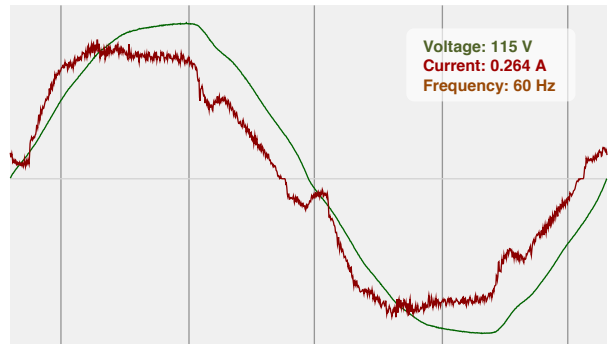
CIE 1931
x: 0.308
y: 0.320

Spectra

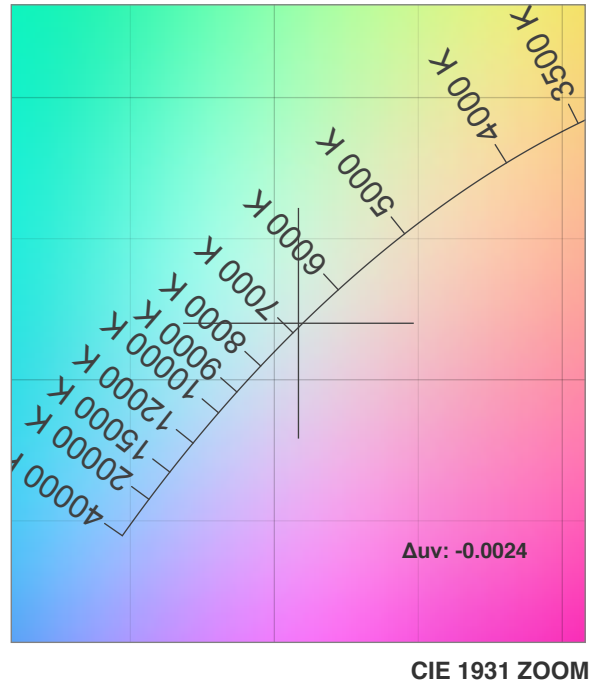
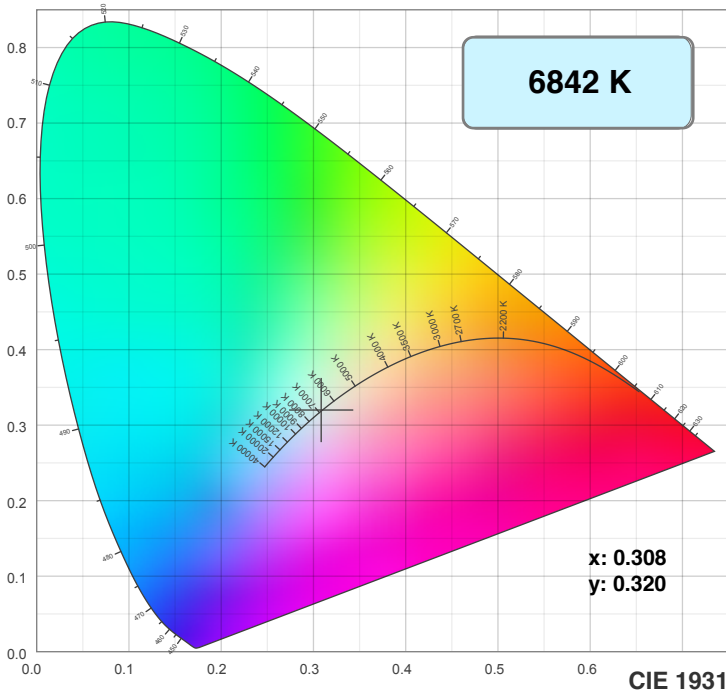
Dominant Wavelength: 445nm



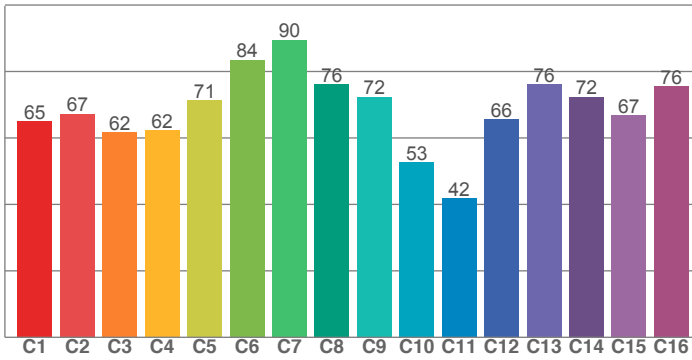
Power



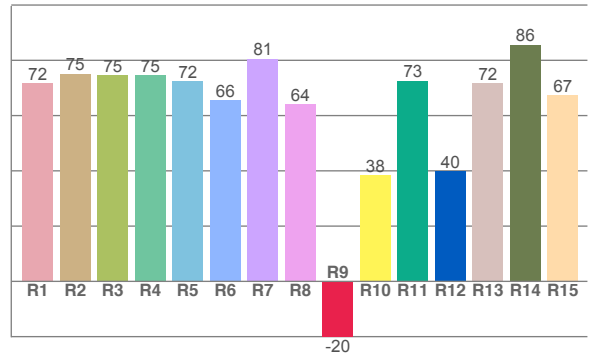
Color Details



TM30: 68.5



CRI: 72.4 (R1-R8)



CRI R values, only R1-R8 are used to calculate final CRI value

R1	R2	R3	R4	R5	R6	R7	R8	R9	R10	R11	R12	R13	R14	R15
71.7	75.1	74.7	74.7	72.5	65.6	80.6	64.2	-20.2	38.5	72.6	40.0	71.7	85.7	67.4

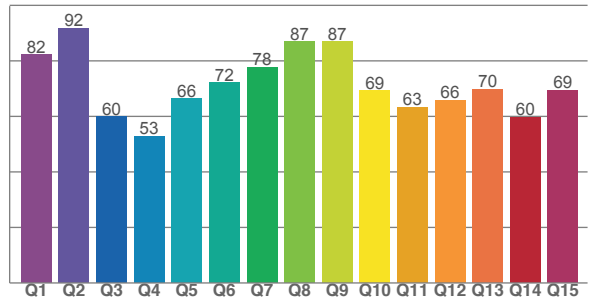
TM30 C values, 16 binned values out of total of 99 C values

C1	C2	C3	C4	C5	C6	C7	C8	C9	C10	C11	C12	C13	C14	C15	C16
65.0	67.3	61.7	62.2	71.3	83.5	89.5	76.1	72.4	52.7	41.8	65.6	76.1	72.3	66.8	75.6

CQS Q values

Q1	Q2	Q3	Q4	Q5	Q6	Q7	Q8	Q9	Q10	Q11	Q12	Q13	Q14	Q15
82.3	91.8	59.9	52.9	66.5	72.3	77.7	86.9	86.9	69.4	63.4	65.8	69.7	59.8	69.4

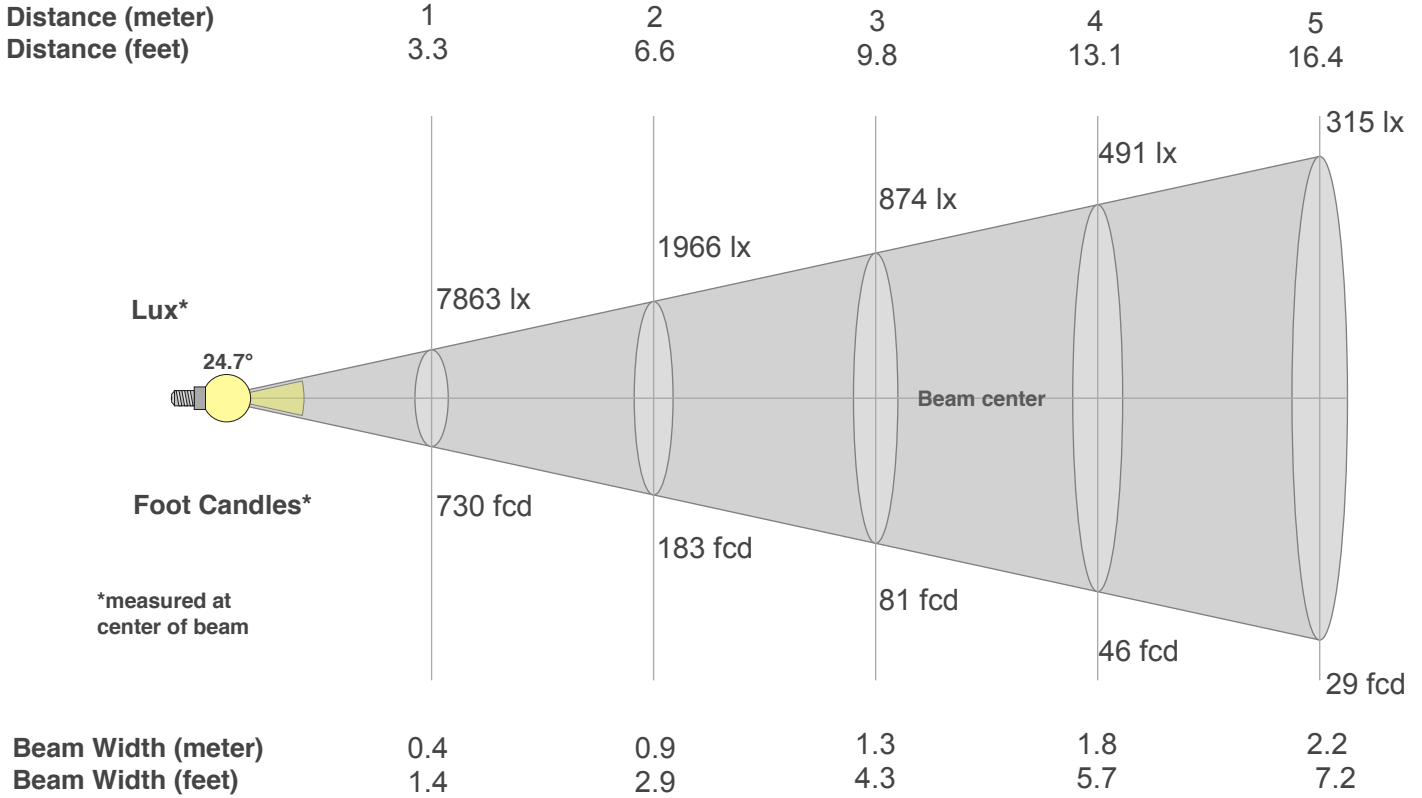
CQS: 69.6



Color Parameters

Color Temperature	Color Rendering Index	Red Component	Color Fidelity	Color Gamut	Color Quality Scale	Color Coordinate CIE 1931	Color Coordinate CIE 1931	Color Coordinate	Color Coordinate	Color Deviation from Black Body
CCT	CRI	CRI R9	TM30 Rf	TM30 Rg	CQS	x	y	u	v	Δuv
6842 K	72.4	-20.2	68.5	95.0	69.6	0.308	0.320	0.198	0.309	-0.0024

Beam Details



Beam Intensities from 1-20m

m	1	2	3	4	5	6	7	8	9	10	11	12	13	14	15	16	17	18	19	20
ft	3.3	6.6	9.8	13.1	16.4	19.7	23	26.2	29.5	32.8	36.1	39.4	42.7	45.9	49.2	52.5	55.8	59.1	62.3	65.6
lx	7863	1966	874	491	315	218	160	123	97	79	65	55	47	40	35	31	27	24	22	20
fcd	730.5	182.6	81.2	45.7	29.2	20.3	14.9	11.4	9	7.3	6	5.1	4.3	3.7	3.2	2.9	2.5	2.3	2	1.8

Intensities in 0° C-plane

0°	2°	4°	6°	8°	10°	12°	14°	16°	18°	20°	22°	24°	26°	28°	30°	32°	34°	36°	38°
7863	7570	7006	6398	5752	4983	4105	3192	2353	1667	1173	843	606	419	278	177	109	67	50	38
100%	96%	89%	81%	73%	63%	52%	41%	30%	21%	15%	11%	8%	5%	4%	2%	1%	1%	1%	0%

Intensities in 90° C-plane

0°	2°	4°	6°	8°	10°	12°	14°	16°	18°	20°	22°	24°	26°	28°	30°	32°	34°	36°	38°
7863	7570	7006	6398	5752	4983	4105	3192	2353	1667	1173	843	606	419	278	177	109	67	50	38
100%	96%	89%	81%	73%	63%	52%	41%	30%	21%	15%	11%	8%	5%	4%	2%	1%	1%	1%	0%

Intensities in 180° C-plane

0°	2°	4°	6°	8°	10°	12°	14°	16°	18°	20°	22°	24°	26°	28°	30°	32°	34°	36°	38°
7863	7627	7015	6332	5697	4970	4108	3169	2304	1613	1137	814	586	412	274	177	108	69	51	36
100%	97%	89%	81%	72%	63%	52%	40%	29%	21%	14%	10%	7%	5%	3%	2%	1%	1%	1%	0%

Intensities in 270° C-plane

0°	2°	4°	6°	8°	10°	12°	14°	16°	18°	20°	22°	24°	26°	28°	30°	32°	34°	36°	38°
7863	7627	7015	6332	5697	4970	4108	3169	2304	1613	1137	814	586	412	274	177	108	69	51	36
100%	97%	89%	81%	72%	63%	52%	40%	29%	21%	14%	10%	7%	5%	3%	2%	1%	1%	1%	0%

Beam Angle 50%	Field Angle 10%	Cutoff Angle 2,5%	Intensity Ratio in 120° Cone	Intensity Ratio in 90° Cone
24.7°	44.6°	59.1°	99.8%	99.2%

18P Hex IP



Light Efficiency:

1 Lumen/Watt

Dominant Wavelength:

420 nm

Output:

23.4 lm

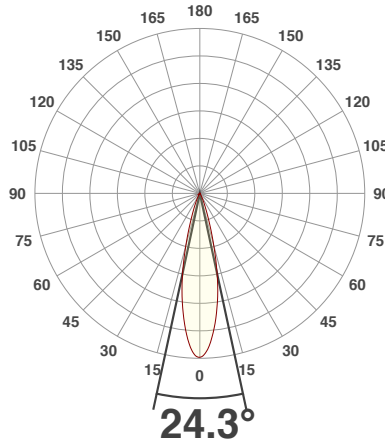
Power:

32.8 W

Peak:

118 cd

Beam Angle



Test:

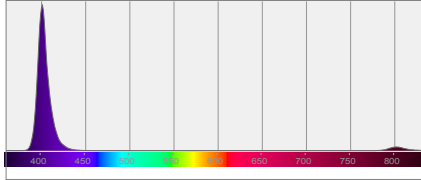
UV

Date:

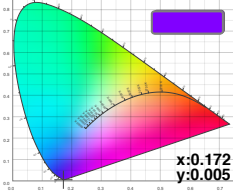
6/5/2018

Note:

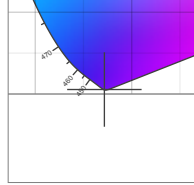
Spectral Distribution



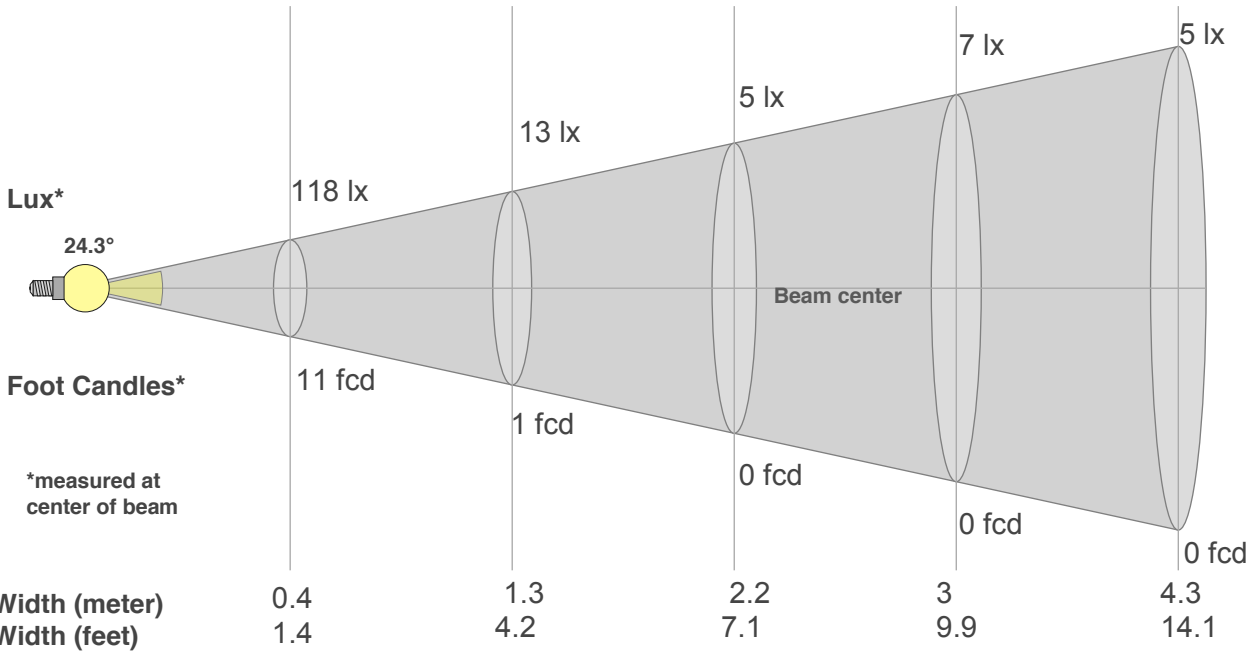
Color Coordinates



Zoom Color Point



Distance (meter)	1	3	5	7	10
Distance (feet)	3.3	9.8	16.4	22.9	32.8



*measured at center of beam

Beam Angle 50%	Field Angle 10%	Cutoff Angle 2,5%	Intensity Ratio in 120° Cone	Intensity Ratio in 90° Cone
24.3°	42.4°	56.4°	99.6%	98.9%

Beam Intensities from 1-20m

m	1	2	3	4	5	6	7	8	9	10	11	12	13	14	15	16	17	18	19	20
ft	3.3	6.6	9.8	13.1	16.4	19.7	23	26.2	29.5	32.8	36.1	39.4	42.7	45.9	49.2	52.5	55.8	59.1	62.3	65.6
lx	118	29	13	7	5	3	2	2	1	1	1	1	1	1	1	0	0	0	0	0
fcd	10.9	2.7	1.2	0.7	0.4	0.3	0.2	0.2	0.1	0.1	0.1	0.1	0.1	0.1	0	0	0	0	0	0