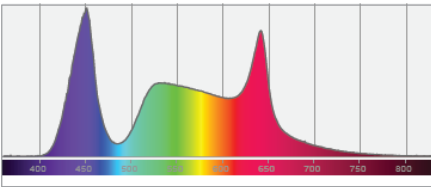
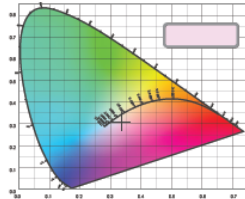


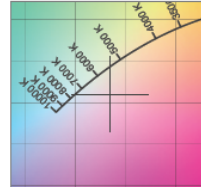
Spectral distribution



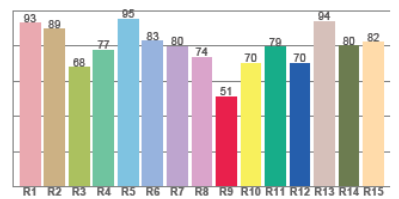
Color coordinates



Zoom color point



CRI R values



Photometric Test Report

*Due to additional product enhancements, an updated version of this report may be available online. Please check www.adj.com for the latest revision/update of this report.

Vizi CMY 16RX



Light Efficiency:



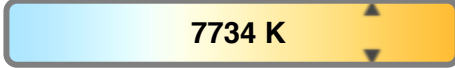
Output: 11269 lm

Light Quality:



Peak: 8050673 cd

Color Temperature:

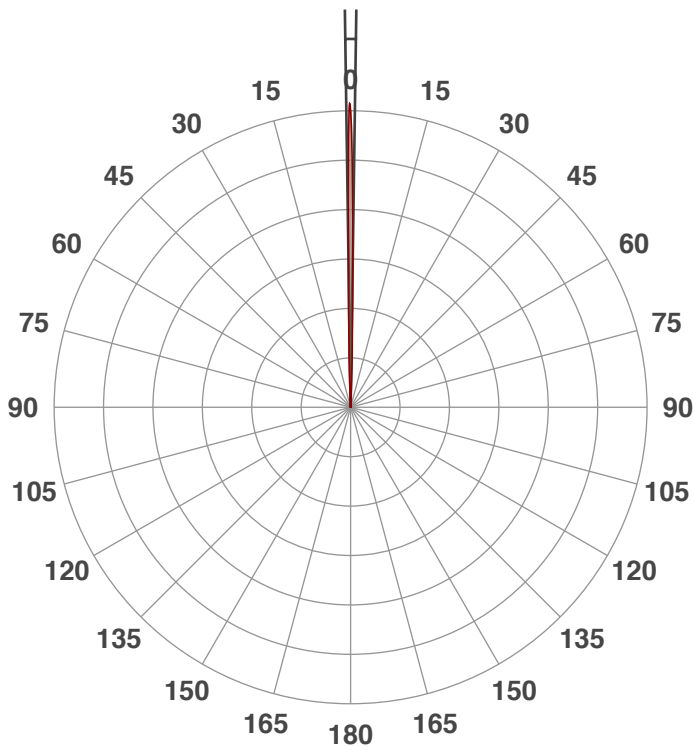


Power: 433 W

PF: 1.0

Beam Angle

1.7°



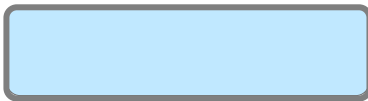
Test:

Zoom In

Date:

2/22/2019

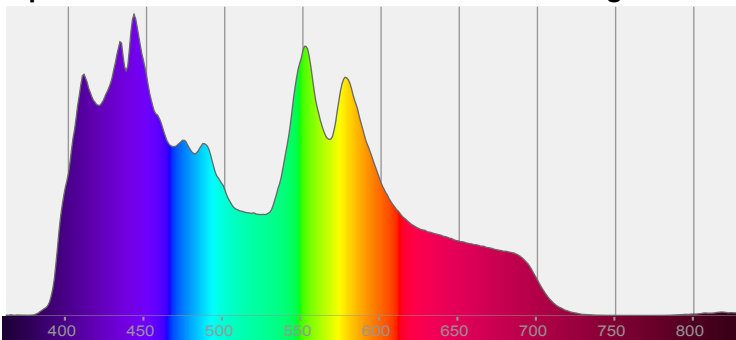
Note:



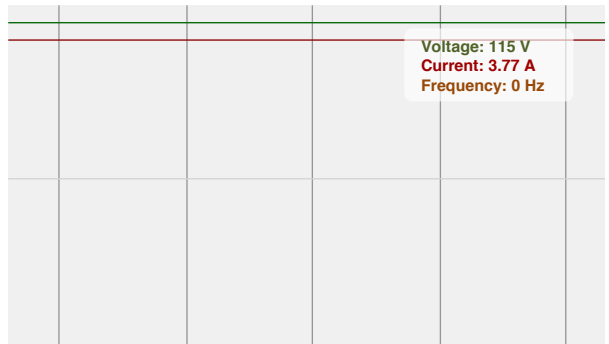
CIE 1931
x: 0.299
y: 0.303

Spectra

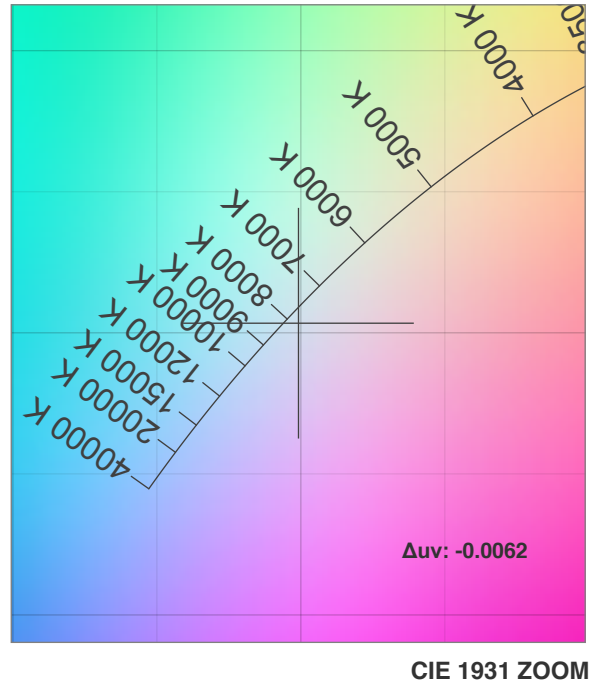
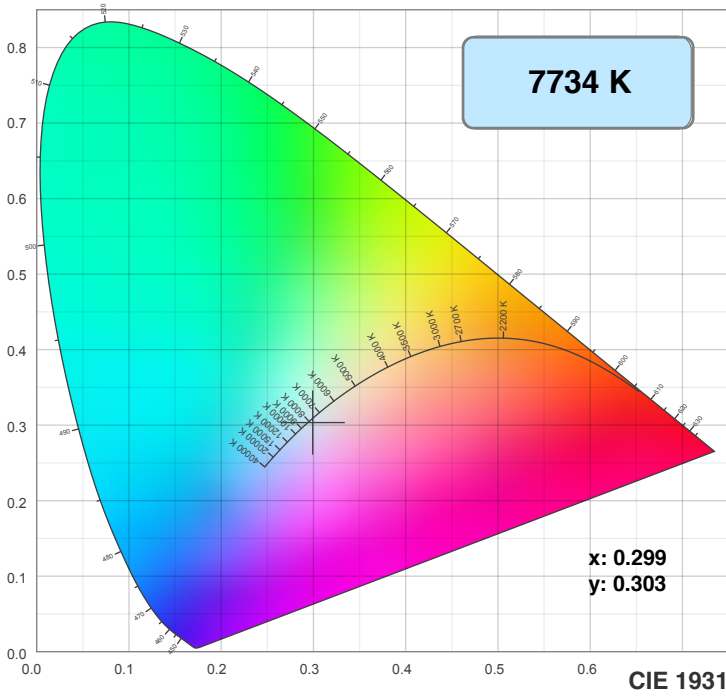
Dominant Wavelength: 455nm



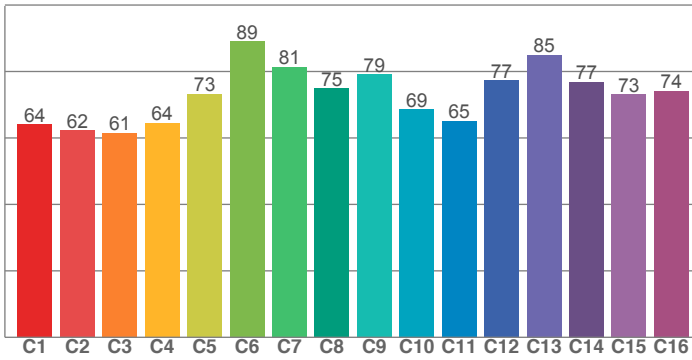
Power



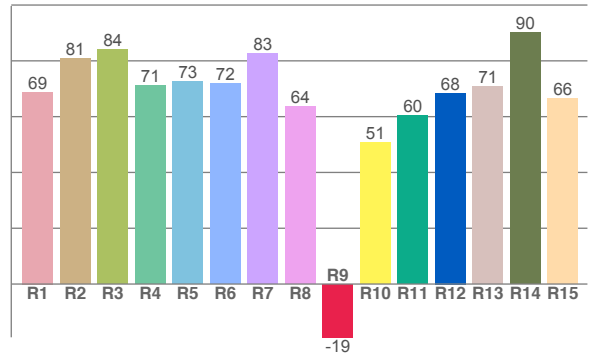
Color Details



TM30: 72.9



CRI: 74.5 (R1-R8)



CRI R values, only R1-R8 are used to calculate final CRI value

R1	R2	R3	R4	R5	R6	R7	R8	R9	R10	R11	R12	R13	R14	R15
68.8	80.8	84.2	71.1	72.7	72.0	82.7	63.6	-19.1	50.8	60.3	68.5	70.9	90.3	66.5

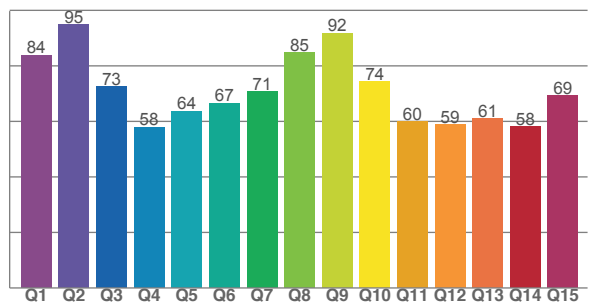
TM30 C values, 16 binned values out of total of 99 C values

C1	C2	C3	C4	C5	C6	C7	C8	C9	C10	C11	C12	C13	C14	C15	C16
64.1	62.2	61.4	64.5	73.3	89.1	81.4	74.9	79.1	68.6	65.1	77.3	85.1	76.9	73.1	74.1

CQS Q values

Q1	Q2	Q3	Q4	Q5	Q6	Q7	Q8	Q9	Q10	Q11	Q12	Q13	Q14	Q15
83.9	94.9	72.6	57.9	63.7	66.6	70.7	84.7	91.8	74.3	59.9	58.8	61.0	58.2	69.2

CQS: 68.8



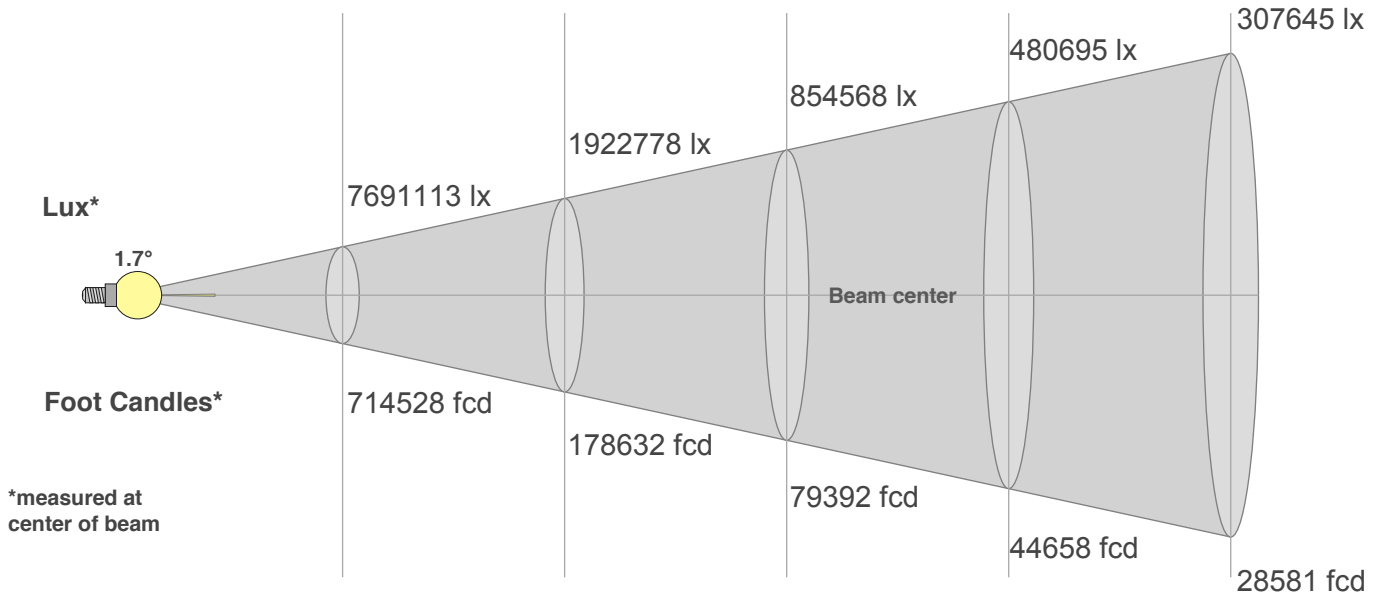
Color Parameters

Color Temperature	Color Rendering Index	Red Component	Color Fidelity	Color Gamut	Color Quality Scale	Color Coordinate CIE 1931	Color Coordinate CIE 1931	Color Coordinate	Color Coordinate	Color Deviation from Black Body
CCT	CRI	CRI R9	TM30 Rf	TM30 Rg	CQS	x	y	u	v	Δuv
7734 K	74.5	-19.1	72.9	90.7	68.8	0.299	0.303	0.198	0.301	-0.0062

Beam Details

Distance (meter)
Distance (feet)

1 2 3 4 5
3.3 6.6 9.8 13.1 16.4



Beam Intensities from 1-20m

m	1	2	3	4	5	6	7	8	9	10	11	12	13	14	15	16	17	18	19	20
ft	3.3	6.6	9.8	13.1	16.4	19.7	23	26.2	29.5	32.8	36.1	39.4	42.7	45.9	49.2	52.5	55.8	59.1	62.3	65.6
lx	7691113	1922778	854568	480695	307645	213642	156961	120174	94952	76911	63563	53411	45510	39240	34183	30043	26613	23738	21305	19228
fcd	714527.8	178631.9	79392	44658	28581.1	19848	14582.2	11164.5	8821.3	7145.3	5905.2	4962	4228	3645.5	3175.7	2791.1	2472.4	2205.3	1979.3	1786.3

Intensities in 0° C-plane

0°	1°	2°	3°	4°	5°	6°	7°	8°	9°	10°	11°	12°	13°	14°	15°	16°	17°	18°	19°	
7.7M	3.3M	0.8M	0.0M	0.0M	0.0M	0.0M	0.0M	0.0M	0.0M	0.0M	0.0M	0.0M	0.0M	0.0M	0.0M	0.0M	0.0M	0.0M	0.0M	0.0M
100%	43%	11%	0%	0%	0%	0%	0%	0%	0%	0%	0%	0%	0%	0%	0%	0%	0%	0%	0%	0%

Intensities in 90° C-plane

0°	1°	2°	3°	4°	5°	6°	7°	8°	9°	10°	11°	12°	13°	14°	15°	16°	17°	18°	19°	
7.7M	3.3M	0.8M	0.0M	0.0M	0.0M	0.0M	0.0M	0.0M	0.0M	0.0M	0.0M	0.0M	0.0M	0.0M	0.0M	0.0M	0.0M	0.0M	0.0M	0.0M
100%	43%	11%	0%	0%	0%	0%	0%	0%	0%	0%	0%	0%	0%	0%	0%	0%	0%	0%	0%	0%

Intensities in 180° C-plane

0°	1°	2°	3°	4°	5°	6°	7°	8°	9°	10°	11°	12°	13°	14°	15°	16°	17°	18°	19°	
7.7M	3.3M	1.0M	0.0M	0.0M	0.0M	0.0M	0.0M	0.0M	0.0M	0.0M	0.0M	0.0M	0.0M	0.0M	0.0M	0.0M	0.0M	0.0M	0.0M	0.0M
100%	43%	13%	0%	0%	0%	0%	0%	0%	0%	0%	0%	0%	0%	0%	0%	0%	0%	0%	0%	0%

Intensities in 270° C-plane

0°	1°	2°	3°	4°	5°	6°	7°	8°	9°	10°	11°	12°	13°	14°	15°	16°	17°	18°	19°	
7.7M	3.3M	1.0M	0.0M	0.0M	0.0M	0.0M	0.0M	0.0M	0.0M	0.0M	0.0M	0.0M	0.0M	0.0M	0.0M	0.0M	0.0M	0.0M	0.0M	0.0M
100%	43%	13%	0%	0%	0%	0%	0%	0%	0%	0%	0%	0%	0%	0%	0%	0%	0%	0%	0%	0%

Beam Angle 50%	Field Angle 10%	Cutoff Angle 2,5%	Intensity Ratio in 120° Cone	Intensity Ratio in 90° Cone
1.7°	4.1°	5.2°	100.0%	100.0%

Vizi CMY 16RX



Light Efficiency:



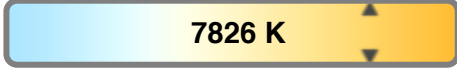
Output: 11319 lm

Light Quality:



Peak: 3172870 cd

Color Temperature:

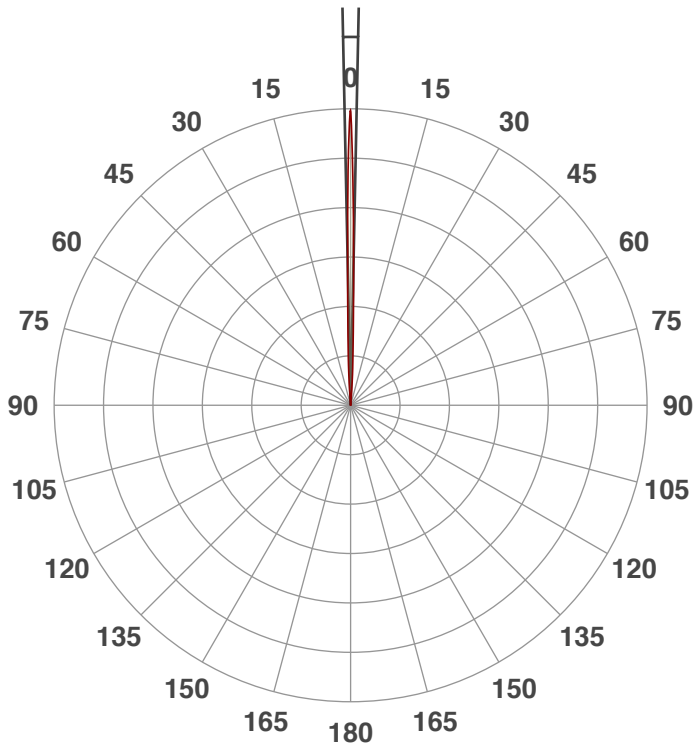


Power: 432.1 W

PF: 1.0

Beam Angle

2.3°



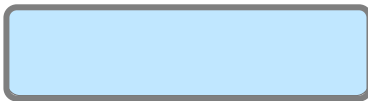
Test:

Zoom 50%

Date:

2/22/2019

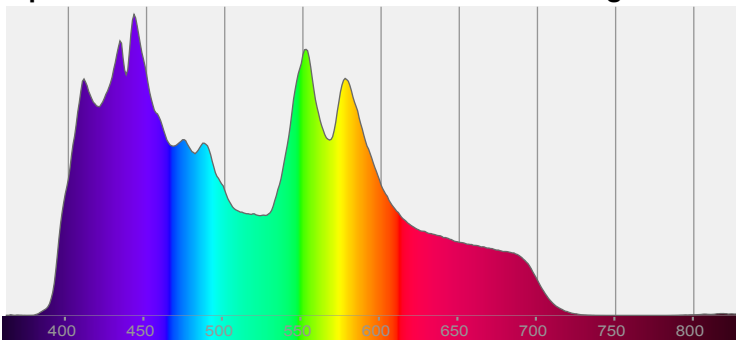
Note:



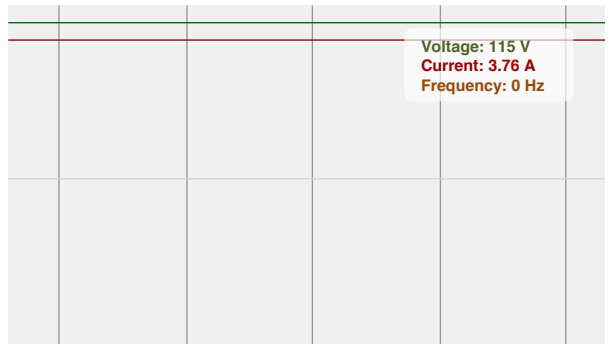
CIE 1931
x: 0.298
y: 0.302

Spectra

Dominant Wavelength: 457nm

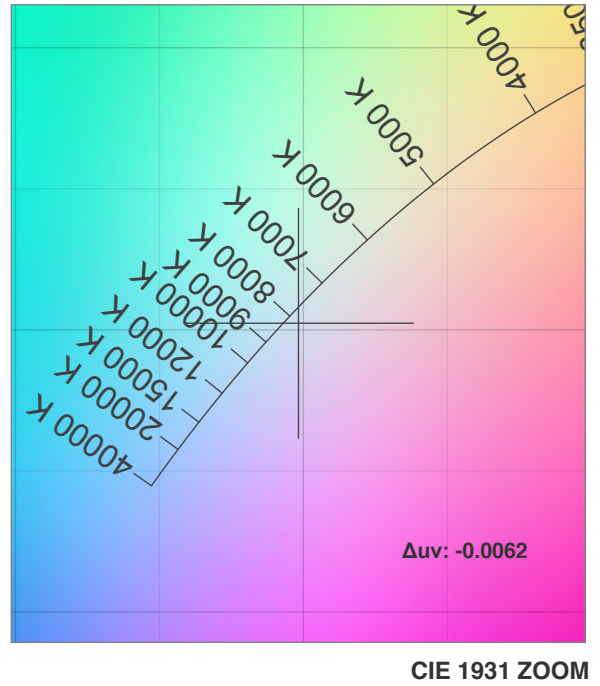
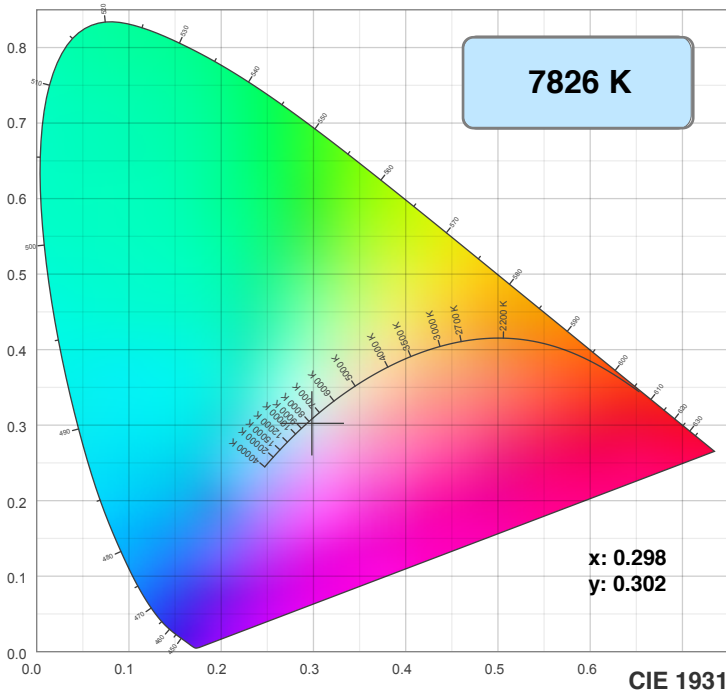


Power

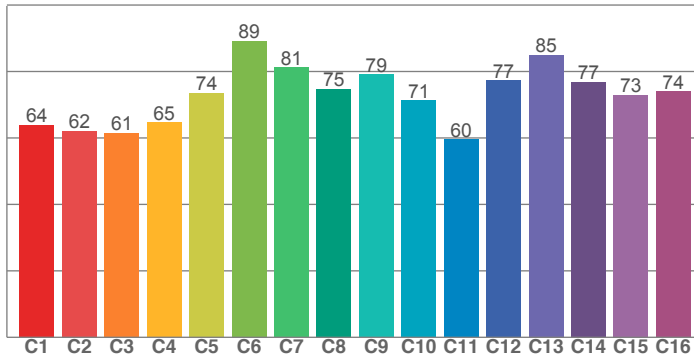


Voltage: 115 V
Current: 3.76 A
Frequency: 0 Hz

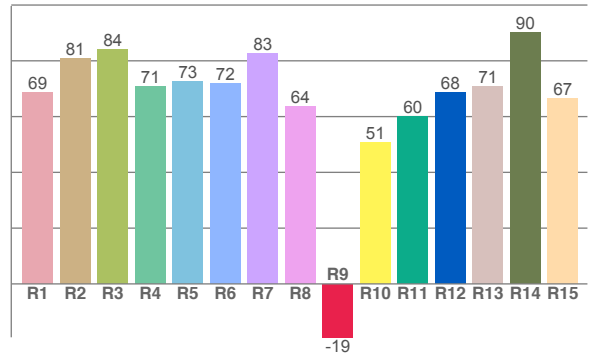
Color Details



TM30: 72.9



CRI: 74.5 (R1-R8)



CRI R values, only R1-R8 are used to calculate final CRI value

R1	R2	R3	R4	R5	R6	R7	R8	R9	R10	R11	R12	R13	R14	R15
68.8	80.9	84.2	71.0	72.7	72.0	82.8	63.7	-19.2	50.8	60.1	68.5	70.9	90.3	66.5

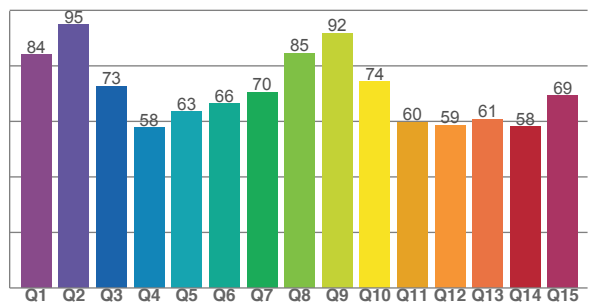
TM30 C values, 16 binned values out of total of 99 C values

C1	C2	C3	C4	C5	C6	C7	C8	C9	C10	C11	C12	C13	C14	C15	C16
64.0	62.1	61.5	64.6	73.6	89.2	81.3	74.8	79.1	71.2	59.6	77.3	85.0	76.9	73.0	74.0

CQS Q values

Q1	Q2	Q3	Q4	Q5	Q6	Q7	Q8	Q9	Q10	Q11	Q12	Q13	Q14	Q15
84.0	94.9	72.6	57.7	63.5	66.3	70.5	84.6	91.9	74.3	59.7	58.6	60.8	58.2	69.3

CQS: 68.7



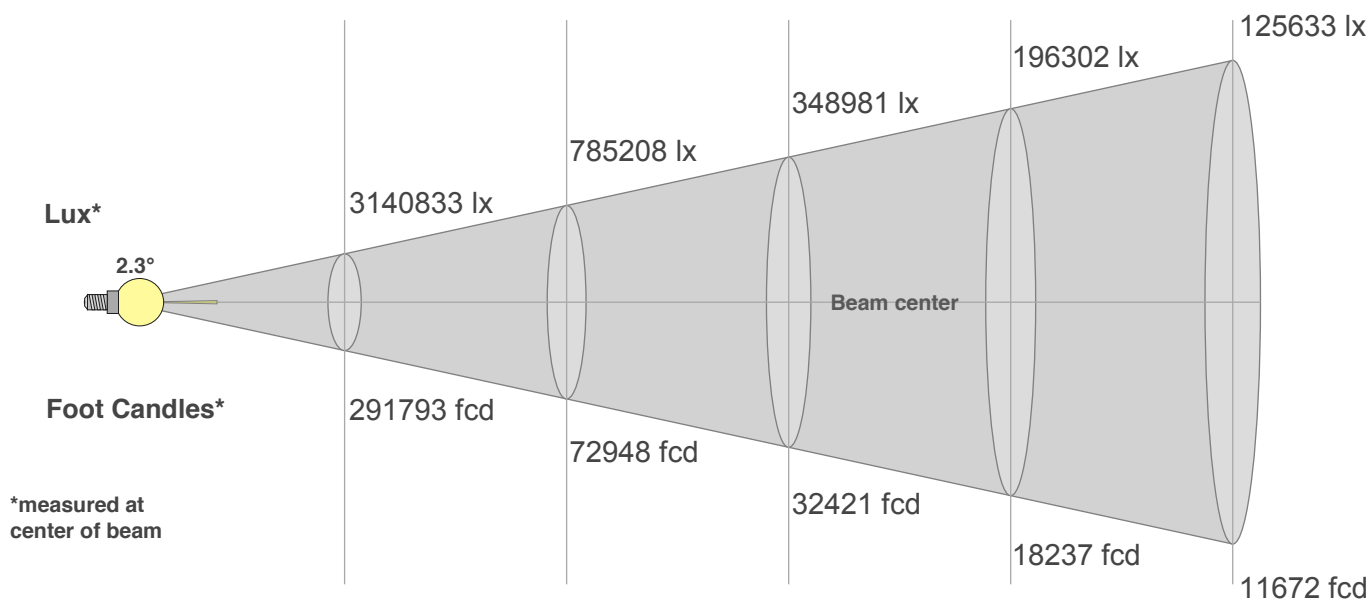
Color Parameters

Color Temperature	Color Rendering Index	Red Component	Color Fidelity	Color Gamut	Color Quality Scale	Color Coordinate CIE 1931	Color Coordinate CIE 1931	Color Coordinate	Color Coordinate	Color Deviation from Black Body
CCT	CRI	CRI R9	TM30 Rf	TM30 Rg	CQS	x	y	u	v	Δuv
7826 K	74.5	-19.2	72.9	90.6	68.7	0.298	0.302	0.198	0.301	-0.0062

Beam Details

Distance (meter)
Distance (feet)

1 2 3 4 5
3.3 6.6 9.8 13.1 16.4



Beam Width (meter)
Beam Width (feet)

0 0.1 0.1 0.2 0.2
0.1 0.3 0.4 0.5 0.7

Beam Intensities from 1-20m

m	1	2	3	4	5	6	7	8	9	10	11	12	13	14	15	16	17	18	19	20
ft	3.3	6.6	9.8	13.1	16.4	19.7	23	26.2	29.5	32.8	36.1	39.4	42.7	45.9	49.2	52.5	55.8	59.1	62.3	65.6
lx	3140833	785208	348981	196302	125633	87245	64099	49076	38776	31408	25957	21811	18585	16025	13959	12269	10868	9694	8700	7852
fcd	291792.9	72948.2	32421.4	18237.1	11671.7	8105.4	5955	4559.3	3602.4	2917.9	2411.5	2026.3	1726.6	1488.7	1296.9	1139.8	1009.7	900.6	808.3	729.5

Intensities in 0° C-plane

0°	1°	2°	3°	4°	5°	6°	7°	8°	9°	10°	11°	12°	13°	14°	15°	16°	17°	18°	19°	
3.1M	1.9M	0.8M	0.4M	0.1M	0.0M	0.0M	0.0M	0.0M	0.0M	0.0M	0.0M	0.0M	0.0M	0.0M	0.0M	0.0M	0.0M	0.0M	0.0M	0.0M
100%	60%	27%	14%	4%	1%	0%	0%	0%	0%	0%	0%	0%	0%	0%	0%	0%	0%	0%	0%	0%

Intensities in 90° C-plane

0°	1°	2°	3°	4°	5°	6°	7°	8°	9°	10°	11°	12°	13°	14°	15°	16°	17°	18°	19°	
3.1M	1.9M	0.8M	0.4M	0.1M	0.0M	0.0M	0.0M	0.0M	0.0M	0.0M	0.0M	0.0M	0.0M	0.0M	0.0M	0.0M	0.0M	0.0M	0.0M	0.0M
100%	60%	27%	14%	4%	1%	0%	0%	0%	0%	0%	0%	0%	0%	0%	0%	0%	0%	0%	0%	0%

Intensities in 180° C-plane

0°	1°	2°	3°	4°	5°	6°	7°	8°	9°	10°	11°	12°	13°	14°	15°	16°	17°	18°	19°	
3.1M	1.8M	0.9M	0.5M	0.2M	0.0M	0.0M	0.0M	0.0M	0.0M	0.0M	0.0M	0.0M	0.0M	0.0M	0.0M	0.0M	0.0M	0.0M	0.0M	0.0M
100%	58%	27%	14%	7%	1%	0%	0%	0%	0%	0%	0%	0%	0%	0%	0%	0%	0%	0%	0%	0%

Intensities in 270° C-plane

0°	1°	2°	3°	4°	5°	6°	7°	8°	9°	10°	11°	12°	13°	14°	15°	16°	17°	18°	19°	
3.1M	1.8M	0.9M	0.5M	0.2M	0.0M	0.0M	0.0M	0.0M	0.0M	0.0M	0.0M	0.0M	0.0M	0.0M	0.0M	0.0M	0.0M	0.0M	0.0M	0.0M
100%	58%	27%	14%	7%	1%	0%	0%	0%	0%	0%	0%	0%	0%	0%	0%	0%	0%	0%	0%	0%

Beam Angle 50%	Field Angle 10%	Cutoff Angle 2,5%	Intensity Ratio in 120° Cone	Intensity Ratio in 90° Cone
2.3°	6.9°	9°	100.0%	100.0%

Vizi CMY 16RX



Light Efficiency:



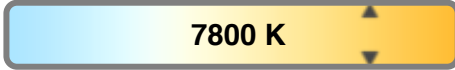
Output: 11700 lm

Light Quality:



Peak: 827853 cd

Color Temperature:

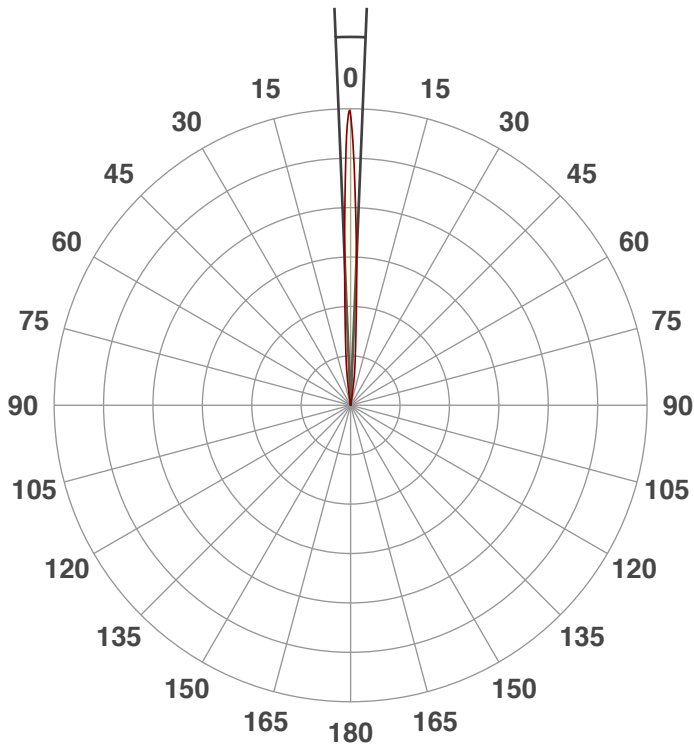


Power: 432.1 W

PF: 1.0

Beam Angle

4.7°



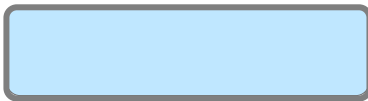
Test:

Zoom In

Date:

2/22/2019

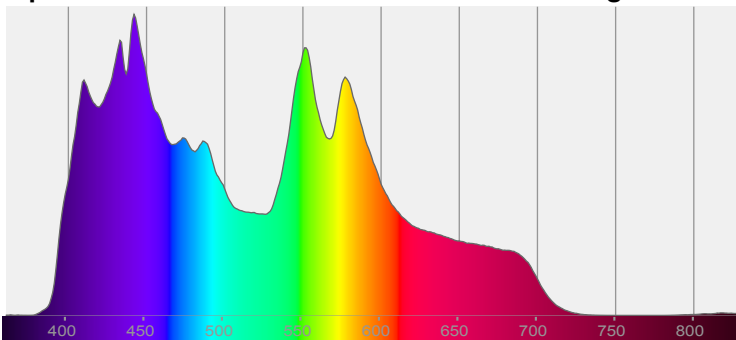
Note:



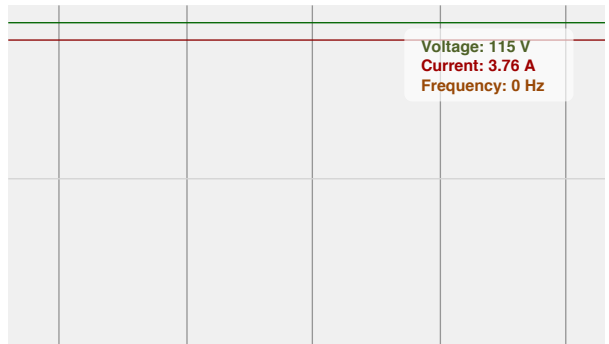
CIE 1931
x: 0.298
y: 0.303

Spectra

Dominant Wavelength: 458nm

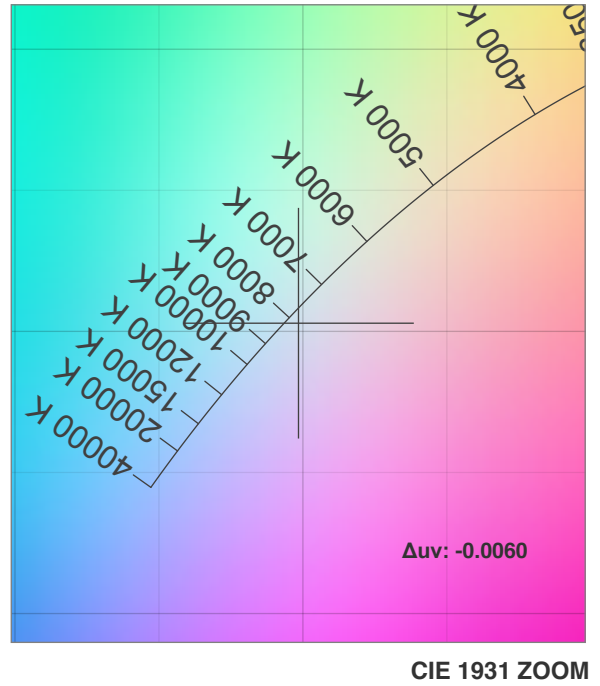
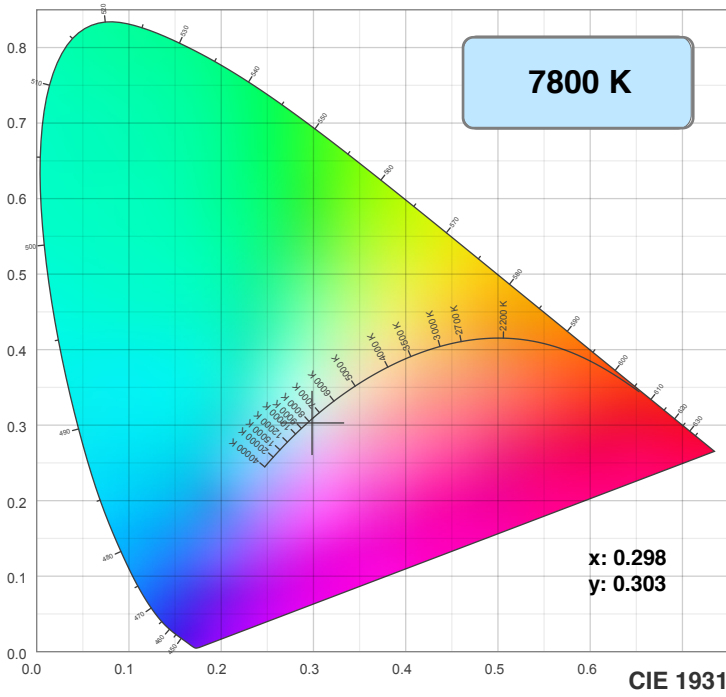


Power

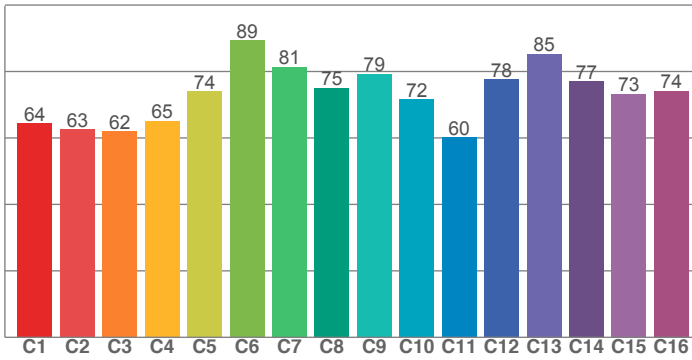


Voltage: 115 V
Current: 3.76 A
Frequency: 0 Hz

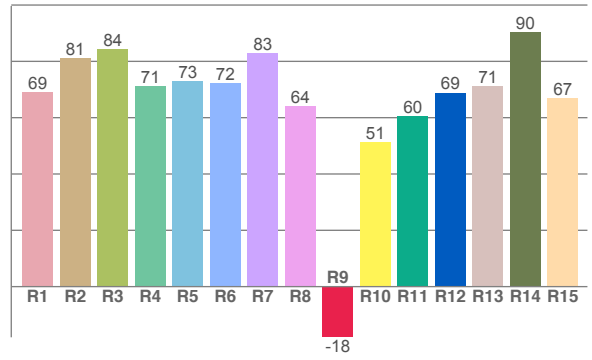
Color Details



TM30: 73.2



CRI: 74.7 (R1-R8)



CRI R values, only R1-R8 are used to calculate final CRI value

R1	R2	R3	R4	R5	R6	R7	R8	R9	R10	R11	R12	R13	R14	R15
69.0	81.1	84.4	71.2	72.9	72.3	82.9	64.0	-18.0	51.4	60.5	68.8	71.2	90.4	66.8

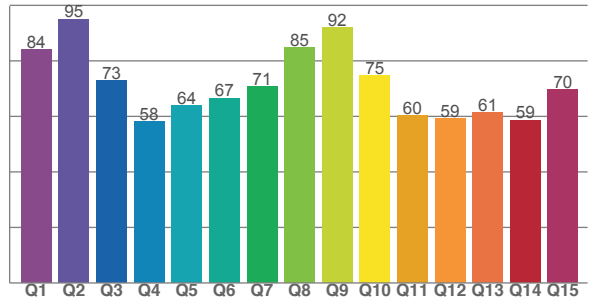
TM30 C values, 16 binned values out of total of 99 C values

C1	C2	C3	C4	C5	C6	C7	C8	C9	C10	C11	C12	C13	C14	C15	C16
64.4	62.5	62.0	65.1	74.0	89.3	81.4	75.0	79.3	71.6	60.2	77.6	85.2	77.0	73.2	74.2

CQS Q values

Q1	Q2	Q3	Q4	Q5	Q6	Q7	Q8	Q9	Q10	Q11	Q12	Q13	Q14	Q15
84.1	95.0	73.0	58.2	63.9	66.6	70.7	84.7	92.0	74.7	60.2	59.2	61.3	58.6	69.5

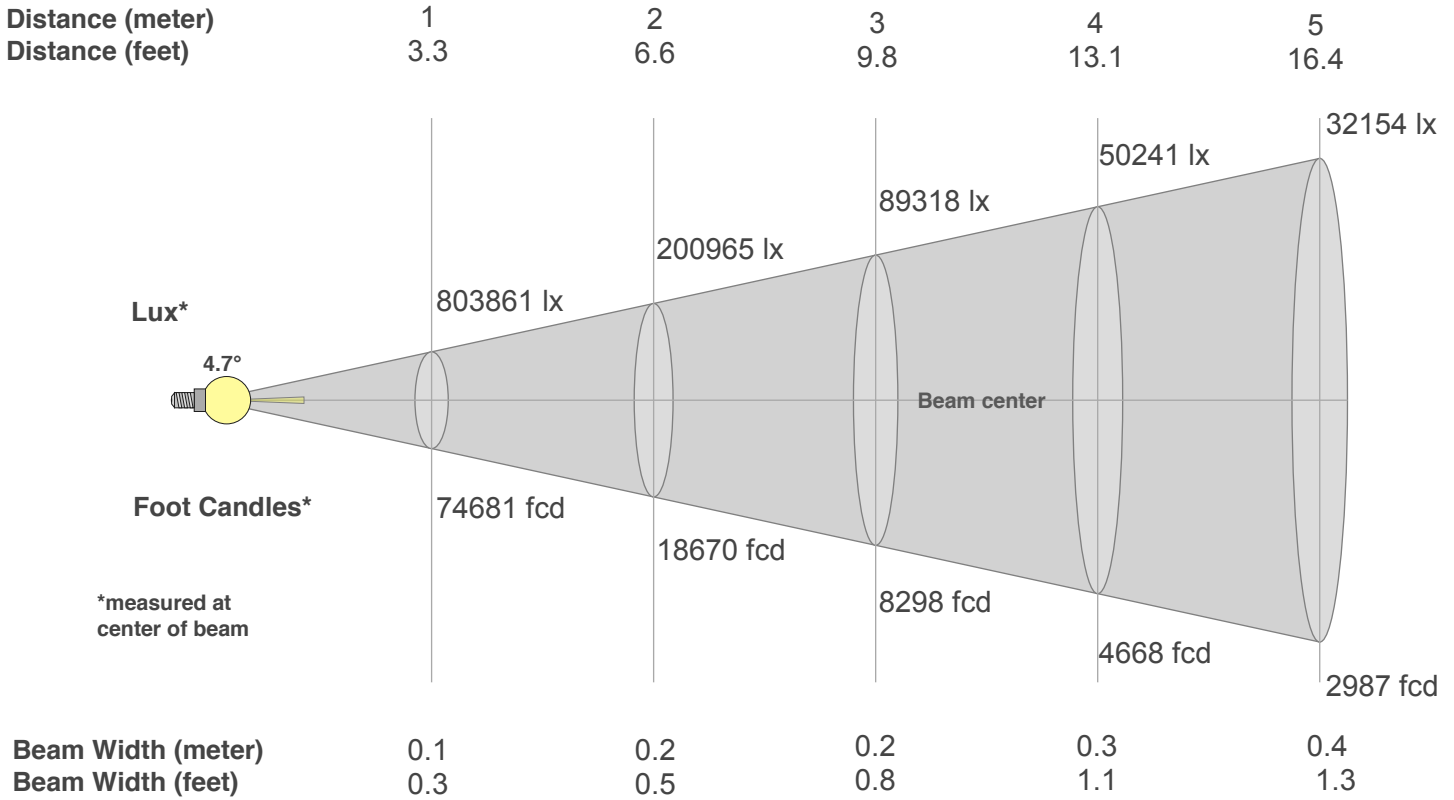
CQS: 69.0



Color Parameters

Color Temperature	Color Rendering Index	Red Component	Color Fidelity	Color Gamut	Color Quality Scale	Color Coordinate CIE 1931	Color Coordinate CIE 1931	Color Coordinate	Color Coordinate	Color Deviation from Black Body
CCT	CRI	CRI R9	TM30 Rf	TM30 Rg	CQS	x	y	u	v	Δuv
7800 K	74.7	-18.0	73.2	90.7	69.0	0.298	0.303	0.198	0.301	-0.0060

Beam Details



Beam Intensities from 1-20m

m	1	2	3	4	5	6	7	8	9	10	11	12	13	14	15	16	17	18	19	20
ft	3.3	6.6	9.8	13.1	16.4	19.7	23	26.2	29.5	32.8	36.1	39.4	42.7	45.9	49.2	52.5	55.8	59.1	62.3	65.6
lx	803861	200965	89318	50241	32154	22329	16405	12560	9924	8039	6643	5582	4757	4101	3573	3140	2782	2481	2227	2010
fcd	74681	18670.3	8297.9	4667.6	2987.2	2074.5	1524.1	1166.9	922	746.8	617.2	518.6	441.9	381	331.9	291.7	258.4	230.5	206.9	186.7

Intensities in 0° C-plane

0°	1°	2°	3°	4°	5°	6°	7°	8°	9°	10°	11°	12°	13°	14°	15°	16°	17°	18°	19°	
804K	722K	481K	313K	216K	155K	113K	71K	33K	16K	6K	0K	0K	0K	0K	0K	0K	0K	0K	0K	0K
100%	90%	60%	39%	27%	19%	14%	9%	4%	2%	1%	0%	0%	0%	0%	0%	0%	0%	0%	0%	0%

Intensities in 90° C-plane

0°	1°	2°	3°	4°	5°	6°	7°	8°	9°	10°	11°	12°	13°	14°	15°	16°	17°	18°	19°	
804K	722K	481K	313K	216K	155K	113K	71K	33K	16K	6K	0K	0K	0K	0K	0K	0K	0K	0K	0K	0K
100%	90%	60%	39%	27%	19%	14%	9%	4%	2%	1%	0%	0%	0%	0%	0%	0%	0%	0%	0%	0%

Intensities in 180° C-plane

0°	1°	2°	3°	4°	5°	6°	7°	8°	9°	10°	11°	12°	13°	14°	15°	16°	17°	18°	19°	
804K	640K	461K	323K	220K	159K	120K	90K	55K	20K	7K	0K	0K	0K	0K	0K	0K	0K	0K	0K	0K
100%	80%	57%	40%	27%	20%	15%	11%	7%	2%	1%	0%	0%	0%	0%	0%	0%	0%	0%	0%	0%

Intensities in 270° C-plane

0°	1°	2°	3°	4°	5°	6°	7°	8°	9°	10°	11°	12°	13°	14°	15°	16°	17°	18°	19°	
804K	640K	461K	323K	220K	159K	120K	90K	55K	20K	7K	0K	0K	0K	0K	0K	0K	0K	0K	0K	0K
100%	80%	57%	40%	27%	20%	15%	11%	7%	2%	1%	0%	0%	0%	0%	0%	0%	0%	0%	0%	0%

Beam Angle 50%	Field Angle 10%	Cutoff Angle 2,5%	Intensity Ratio in 120° Cone	Intensity Ratio in 90° Cone
4.7°	14°	17.6°	100.0%	100.0%