

arkAOS | PRO



Documentation

MEDIA SERVER SERIAL NUMBER

MEDIA SERVER ACCOUNT CREDENTIALS

The information in this document is subject to change without notice and does not represent a commitment on the part of ArKaos S.A. No part of this publication may be copied, reproduced or otherwise transmitted or recorded, for any purpose, without prior written permission by ArKaos S.A.

All product and company names are [™] or © trademarks of their respective owners.
© ArKaos S.A. 1996-2015. All rights reserved.

Table of Contents

1	TOUCHSCREEN AND LED STRIP	1
1.1	INTRODUCTION	1
1.2	LED STRIP	1
1.3	TOUCHSCREEN FUNCTIONS	1
1.4	STARTUP SCREEN	2
1.5	MAIN MENU	2
1.6	LOCK TOUCHSCREEN	3
1.7	ADVANCED OPTIONS	3
1.8	EDID LOCK	4
1.9	FAN CONTROL MODE	5
1.10	ART-NET ADDRESS SETTINGS	6
2	REAR PANEL CONNECTION CHART	7
2.1	STADIUM SERVER WITH 6 OUTPUTS / 2 INPUT	7
3	SYSTEM RECOVERY PROCESS	8
3.1	INTRODUCTION	8
3.2	BEFORE YOU START	8
3.3	STEP BY STEP PROCESS	8
4	SUPPORT, INFORMATION AND CONTACT	14
4.1	INTRODUCTION	14
4.2	SERVICE AND REPAIRS	14
4.3	SOFTWARE (MEDIAMASTER) SUPPORT	14
4.4	CONTACT ARKAOS	15

1 Touchscreen and LED Strip

1.1 Introduction

The Arkaos Pro Stadium server front panel features a touchscreen display and a LED Strip that allows you to control and monitor the server without the need to connect an external display.

This document will inform you how to use the touchscreen menus and interpret the LED Strip so you can make an optimal use of your server.

1.2 LED Strip

The LED Strip is designed to let you know at a glance what is the current state of the system.

The LED Strip can have one of the following colors :

- **Off:** MediaMaster is not running
- **Blue:** indicates that MediaMaster is running:
 - If MediaMaster is not in full screen mode, the Strip is all green
 - If MediaMaster is in full screen mode, the LEDs will indicate the performance of the MediaMaster Engine based on the frame rate. If the strip is all blue the frame rate is ideal and MediaMaster has enough resources. LEDs will start to dim on the right end of the strip if the performance decreases.
- **Orange:** the system is overheating, or one of the temperature sensors encountered a hardware failure. An Error message will appear on the screen.
- **Red:** MediaMaster has quit due to an unexpected error

If necessary, you can disable the LED Strip via the Stadium server touchscreen.

1.3 Touchscreen Functions

The media server can be controlled by the touchscreen in front of the case.



1.4 Startup Screen

The startup screen is the initial screen when booting up the media server or when shutting down. This screen also means that their no fan control modes are set, all fans will be running at full speed.

1.5 Main Menu



Once the server has booted, the following options are available in the main menu

On the left side from top to bottom:

- Start MediaMaster
- Turns On/Off the touchscreen. Press the screen to reactivate it
- Turns On/Off the LED strip
- Lock the touchscreen to prevent access (see point 1.7)

On the right side:

- Access advanced options

Center:

- **GPU:** Displays the current charge on the GPU.
- **CPU:** Displays the current charge on the CPU.
- **Temperature:** Displays the current temperature of the machine.

1.6 Lock touchscreen



The “lock touchscreen” allows you to choose a password for your machine. When the machine is locked, none of the functions available on the touchscreen will be able to be changed.

Create the code:

When you want to lock the machine you will have to set your personal 4 digit password. After entering your password a first time, you will have to enter it again to confirm, if both passwords are not identical, locking will not happen.

To unlock, please enter your password again and you will be able to change the setting of the machine.

1.7 Advanced options

The advanced options panel has 4 icons displayed, respectively from top to bottom:

- Back to main menu
- EDID Management
- Fan modes
- Network settings

1.8 EDID Lock



The EDID management allows you to lock the displays settings. The EDID locking always remembers the state of your machine at locking time so no screen changes will be detected by the machine or the MediaMaster software. Even unplugged screens will still be visible in the software. This makes your machine more stable and it will be less affected by external changes. It is always recommended to lock your outputs once you have achieved the correct settings of your setup.

1. Plug your **User Interface** output on the bottom left DVI on the back of the server
2. Plug all your **Outputs** to the DVI outputs on the back of the server
3. Press the **lock** icon to **Lock/Unlock** your EDID

1.9 Fan Control Mode



The Stadium server contains 3 system fans (1 on the front and 2 at the back). These fans can be set to the following modes:

- **Rock and roll:** Fans will operate to their maximum, best cooling
- **Normal:** Fans will operate for normal temperatures, high performance
- **Silent:** Fans will run at low speed, reduced performance possible.

If the first or second mode is selected but the server starts overheating, the system will automatically switch fan modes to Full Load to prevent overheating. This change is not reflected in the menu because it will switch back to the previously selected mode when the system is back to normal temperature.

1.10 Art-Net Address Settings



The Stadium Server allows you to set the IP ranges from the machine from the front screen, in this way you will not have to access the windows control panel.

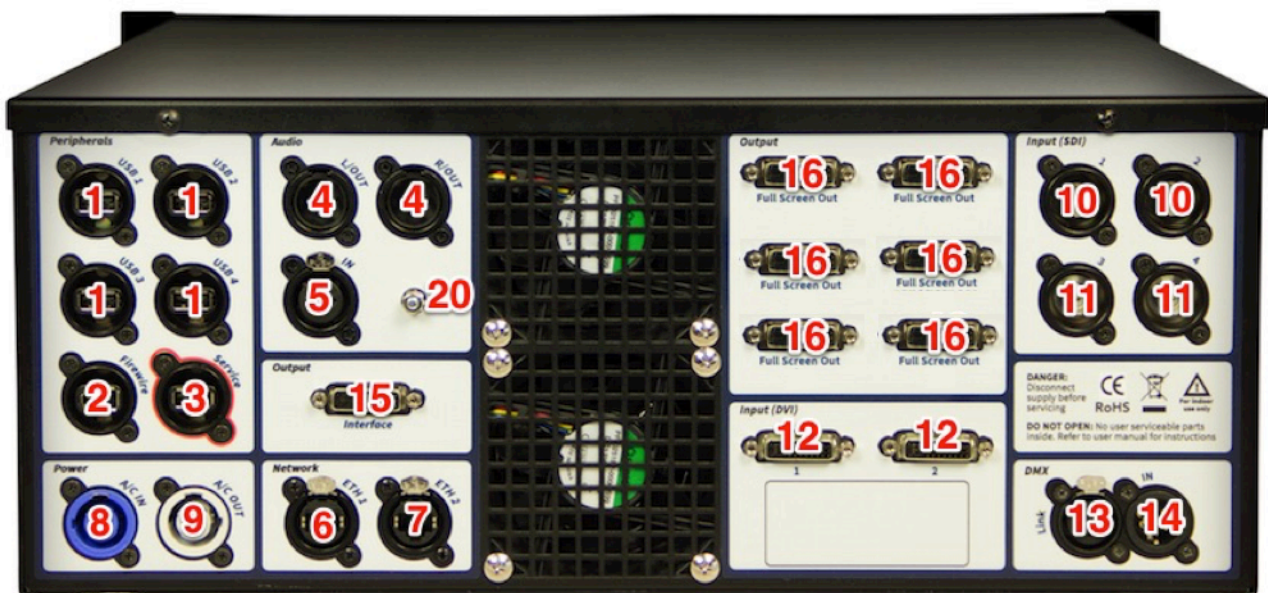
Standard the IP's of the server will be set to 2.0.0.1 and 2.0.0.2, both with network mask 255.0.0.0 .

It is only possible to set an IP address if the network cable is plugged.
If the network cable is plugged you will see the current IP address appearing, if there is no cable plugged this will be indicated with a red cross over the network connection.

To set the IP address, just tap the box you want to edit and enter the new IP address. Once you confirm the IP address the box will change to red or green. In the green case the new IP has been accepted, in the red case, there was occurred a conflict on the network and you will have to choose another address. If red and you don't choose a new IP it will go back to the previous set IP address.

2 Rear panel connection chart

2.1 Stadium server with 6 outputs / 2 input



1. USB 2.0
2. Firewire
3. Service (update front screen, only on ArKaos request)
4. Audio OUT L/R (XLR)
5. Audio IN (XLR)
6. Ethernet 1
7. Ethernet 2
8. Power AC IN (Powercon)
9. Power AC OUT (Powercon)
10. Standard HD SDI input
11. Option HD SDI input (up to a maximum of 4)
12. Option DVI/VGA/HDMI input (up to a maximum of 2)
13. DMX link
14. DMX in
15. DVI Ouptut Interface
16. DVI Output

3 System Recovery Process

3.1 Introduction

If for any reason you have problems with your ArKaos Media Server system drive (drive C), you can restore it to factory settings thanks to the backup image file which is located on an external memory called 'BACKUP'. This drive is not visible in the "my computer" folder but will show up in the Acronis application. To do so, following this recovery process step by step.

IMPORTANT :

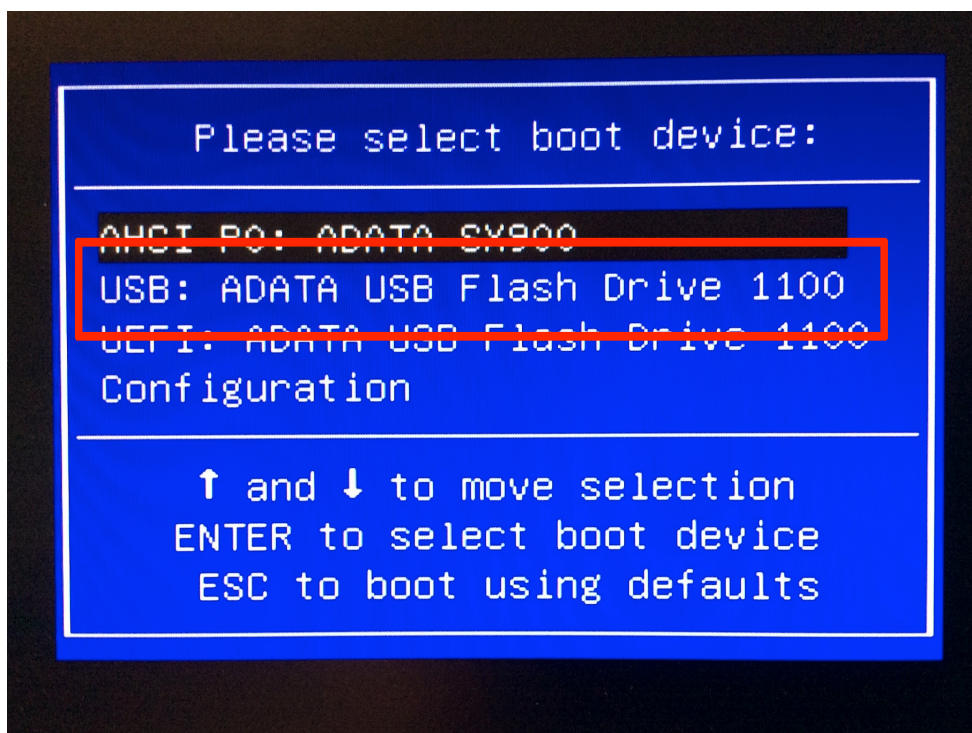
Be very careful when going through the Recovery Process as your server may become unusable if you do not select the correct options as described further. Upon receiving the server it is recommended that you take some time in a quiet place to go through the Recovery Process on the server up to step 14 (and click « *Cancel* », of course) so that you are familiar with the recovery and you will be more confident if you need to do it on a tour, two hours before a show..

3.2 Before you start

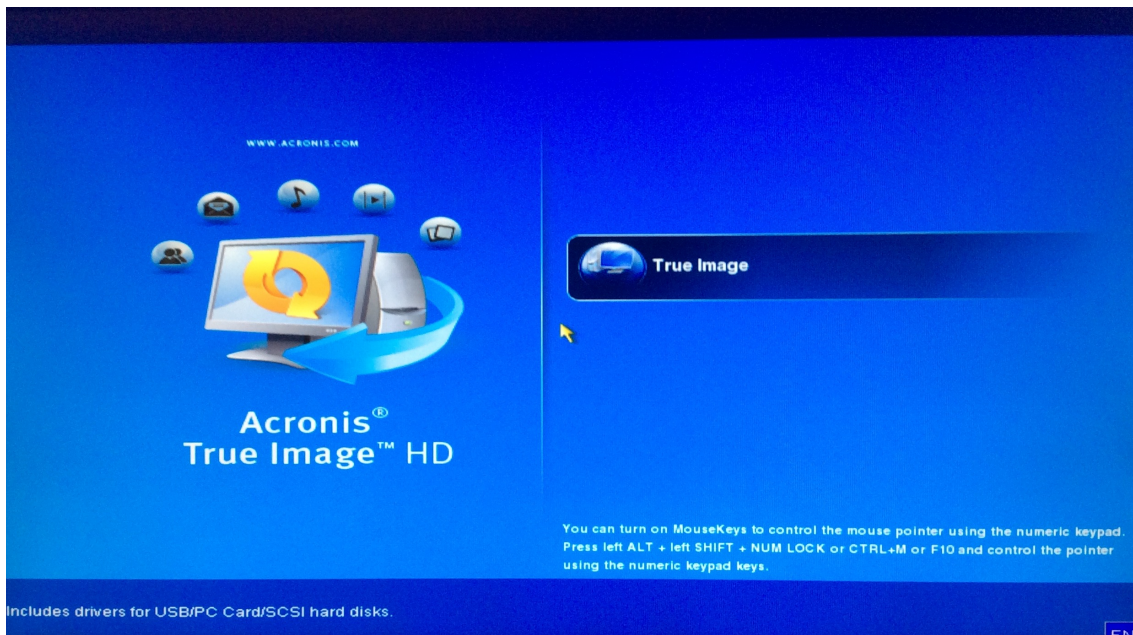
- Make sure your server is connected to a stable power source.
- Connect a keyboard, a mouse and an external display.

3.3 Step by step process

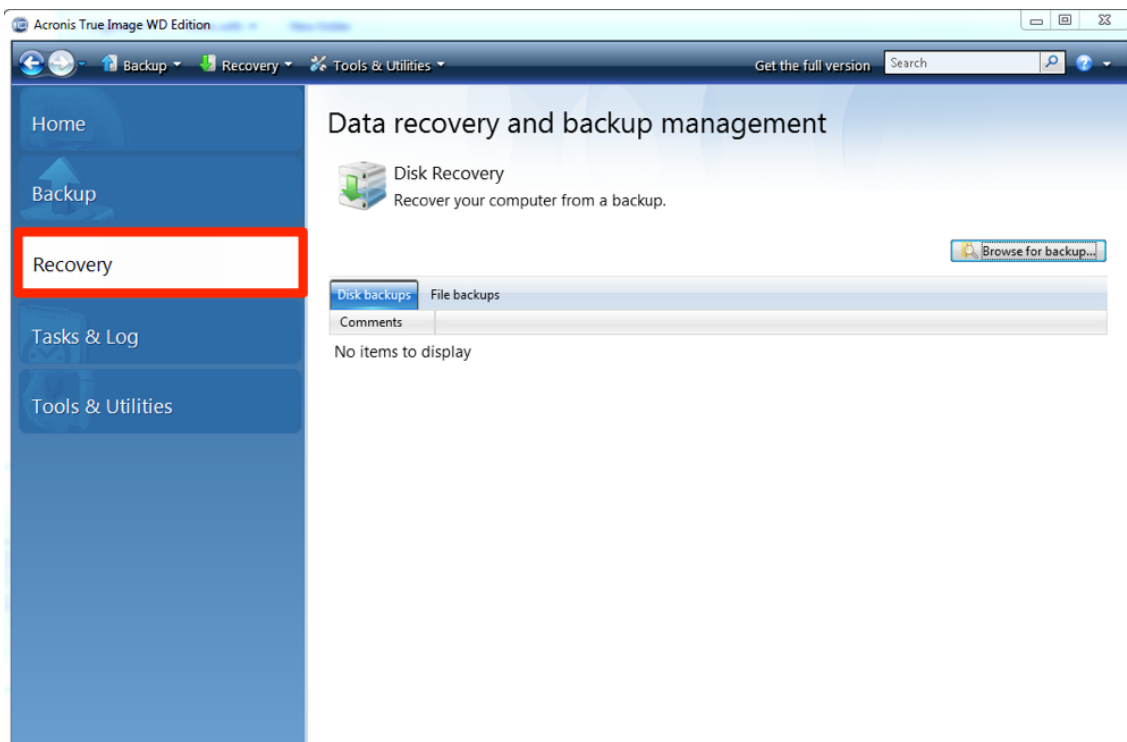
1. At boot up, when you see the first BIOS message appear, press the F11 key to start the Boot menu.
2. A new window will open on your screen. Select "USB: ADATA USB Flash Drive 1100" as booth first device.



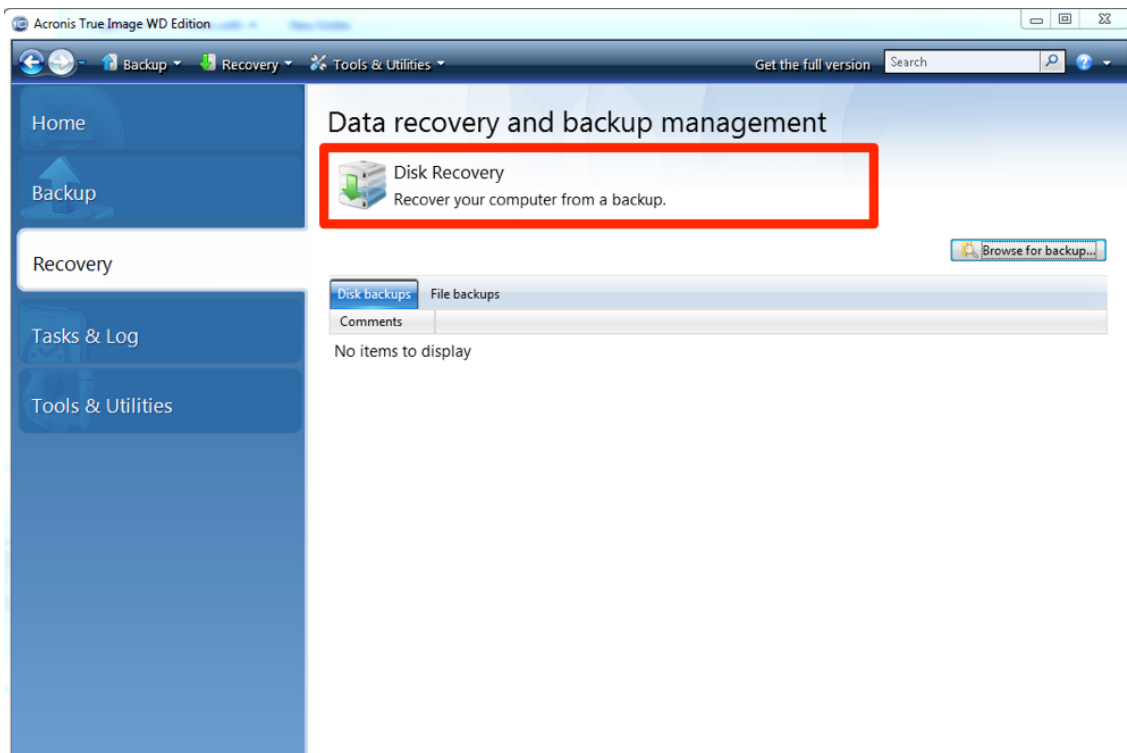
- 3 The Recovery Manager starts with the following screen. Choose « True Image ».



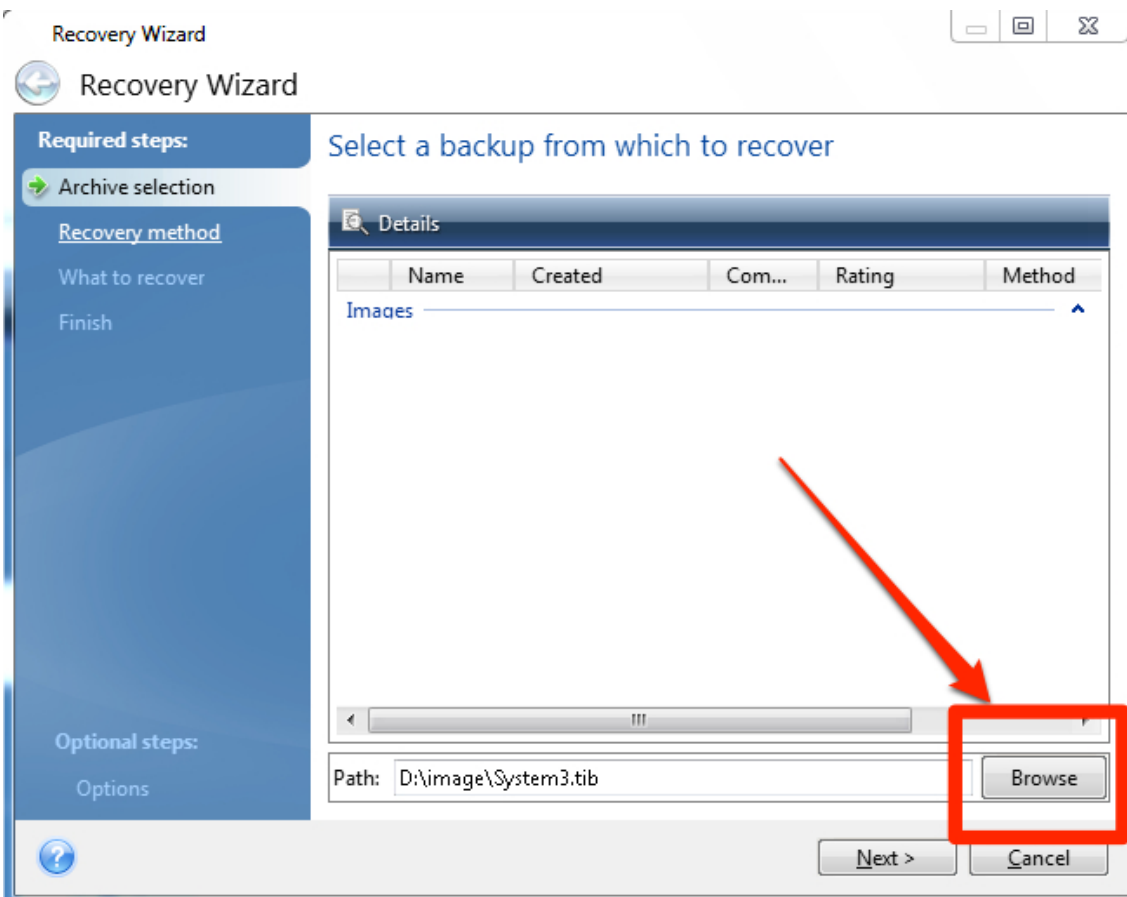
- 4 When Acronis is loaded, select « Recovery ».

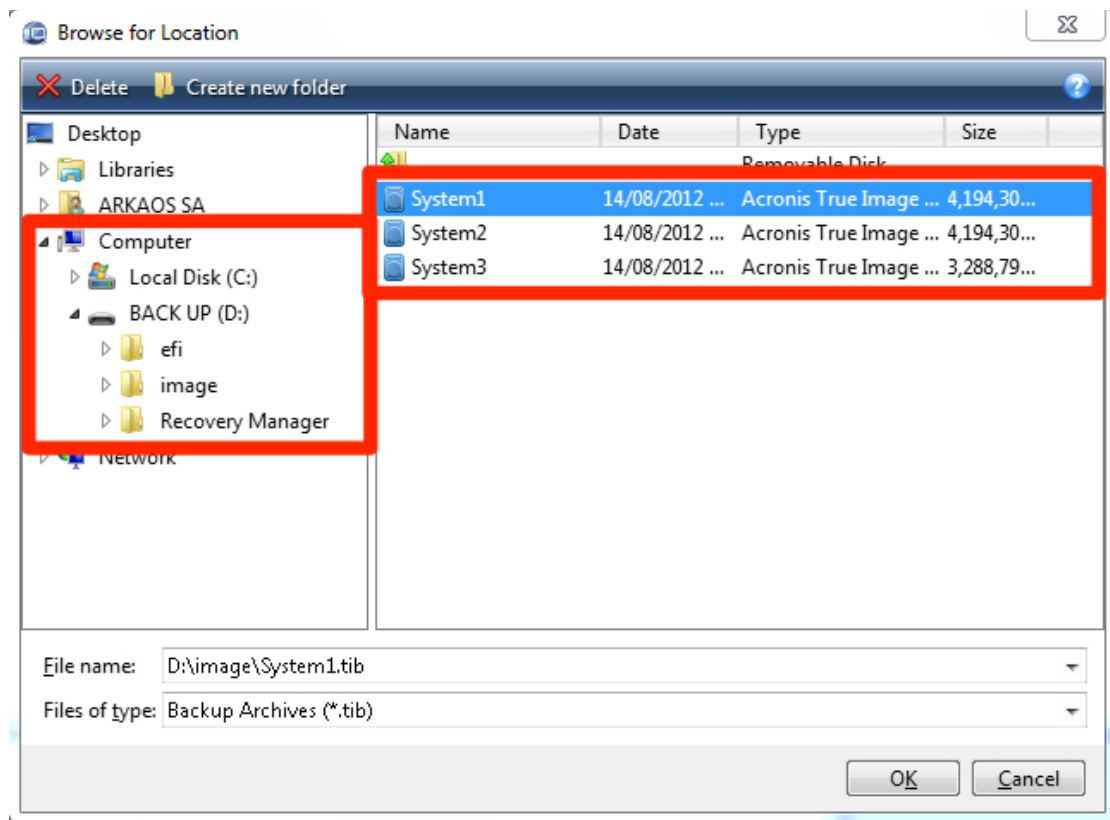


5 Click on « Disk Recovery ».

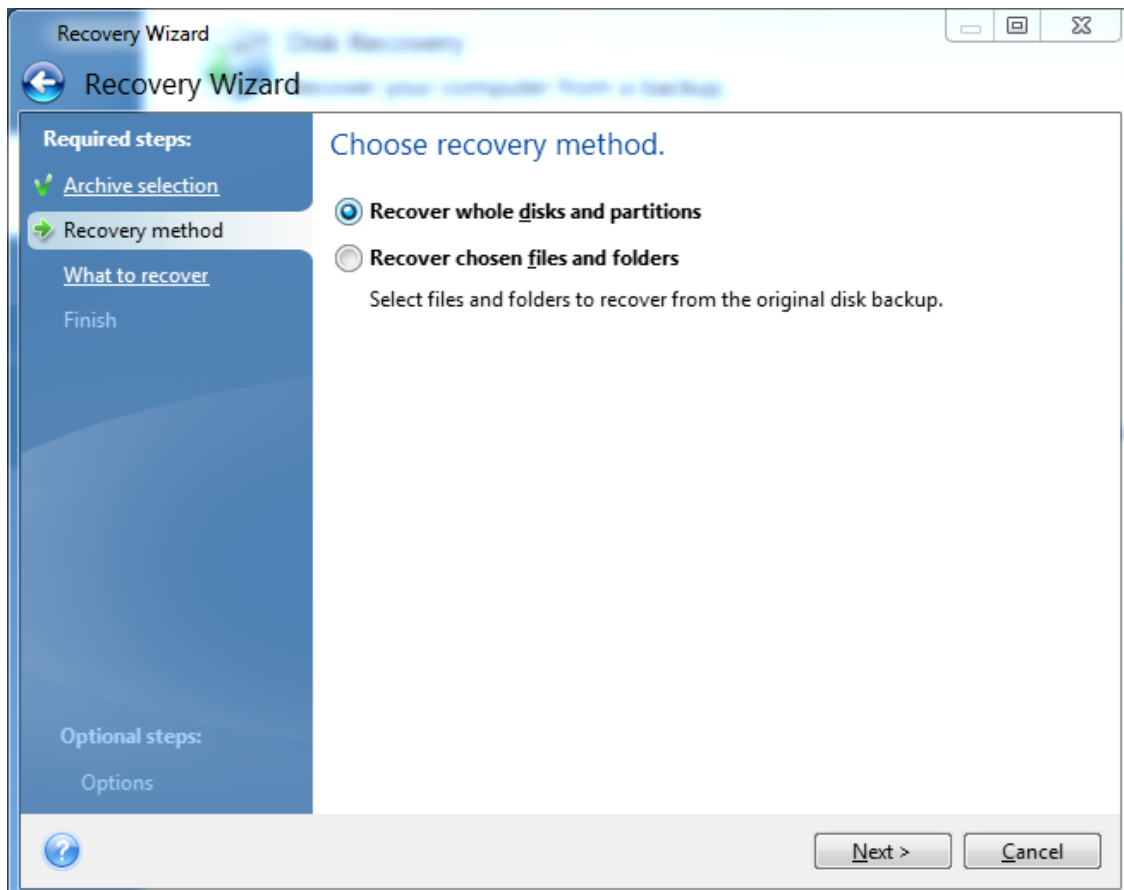


6 Click on browse and go to: « removable drive (E) -> image » and select “system 1”. Choose: «ok» then «Next».

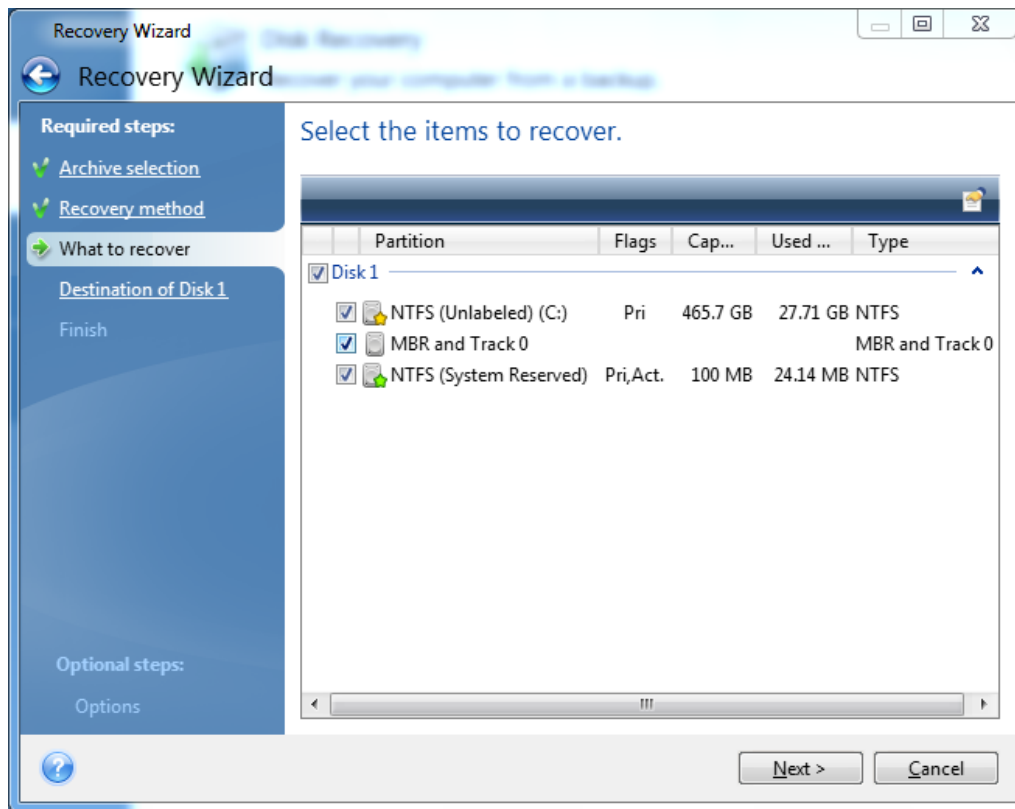




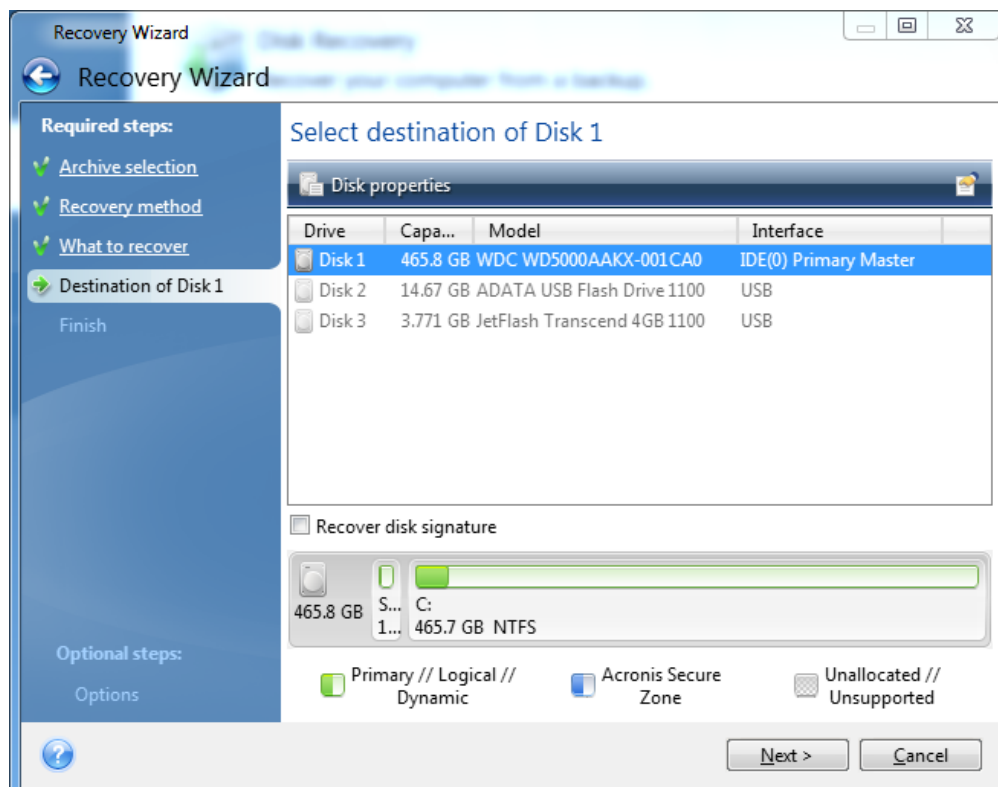
7. Select: « Recover whole disks and partitions »



8. Select what you want to recover. Click on all 3 options



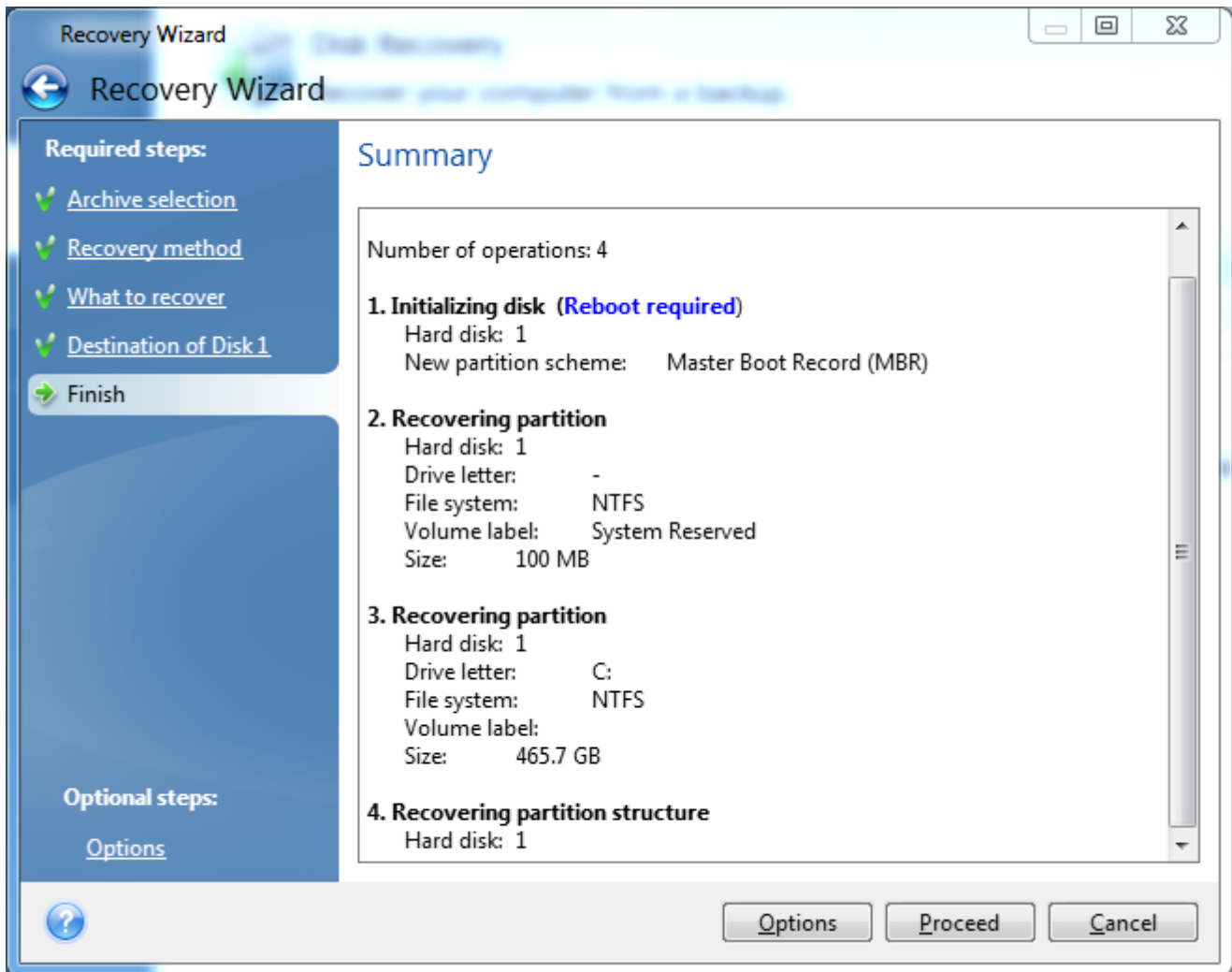
9. Choose the destination for each partition



ATTENTION:

Nothing has been modified on the server yet, if you were just trying the Recovery Process this is where you can click « *Cancel* » and reboot the server without any change.

10. You will get a summary of what you will do to the system. If you now click on « proceed » the recovery process of your machine will start and your machine will go back to its factory settings.



11. When the recovery is finished you will receive a message that states that your recovery was successful. Close Acronis and the system will restart with its factory settings.

4 *Support, information and contact*

4.1 Introduction

The ArKaos Stadium server is a professional media server which was designed and configured for the sole purpose of running the ArKaos MediaMaster software with the best possible performance and stability.

As such, it should always be manipulated and operated by trained professionals, which should also be capable of using the Lighting Desk that will be used to control the Stadium server (if any).

Unless recommended by ArKaos or an ArKaos Reseller, no modification should be made to the system and no additional software should be installed on the server because it may result in making the system unstable.

4.2 Service and repairs

For service and repairs, remember that you are bound to the Warranty and Replacement Policy that shipped with your server.

Service and repairs for your server should always be done by ArKaos or an ArKaos Reseller. In any case, it is always recommended to first contact the ArKaos Reseller which you bought the server from.

Our distributors and resellers are also at your service if you would like to request specific information in your language, advice on compatible lighting desks, LED walls, projectors or any other additional hardware solution, quotes for a particular configuration etc.

A complete list of distributors and resellers for VJ/DJ or Show/lighting products can be found on our web site at:

<http://www.arkaos.net/distributors.php>

4.3 Software (MediaMaster) support

MediaMaster is the ArKaos software that is installed on your Stadium server, you will find the complete user guide – including the Fixtures DMX chart - in PDF in the software installation folder.

If you need support with the MediaMaster software on your Stadium server, you can contact the ArKaos Reseller which you bought the server from.

You can also contact ArKaos directly by opening a trouble ticket in our online Support Centre at the address below. This system allows our team to receive your support requests and follow up the resolution of your problem as well as eventual future issues. Please note that our support team answers your requests during office hours (CET) on week days.

<http://support.arkaos.net/>

4.4 Contact ArKaos

ArKaos s.a.
Ch. de Waterloo 198
B1640 Rhode-Saint-Genèse
Belgium

Tel: +32 2 340 86 86
Fax: +32 2 340 86 87
E-Mail: contact@arkaos.net (not for support)
Web: <http://www.arkaos.net/>

Thank you very much for your interest in our products, we hope you will enjoy working with this server as much as we enjoyed designing it for you!

The ArKaos Team

www.arkaospro.com