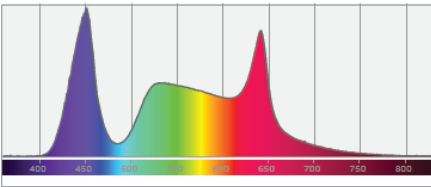
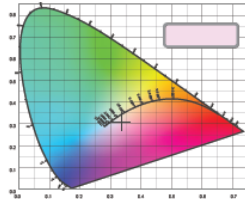


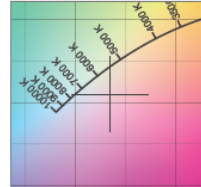
**Spectral distribution**



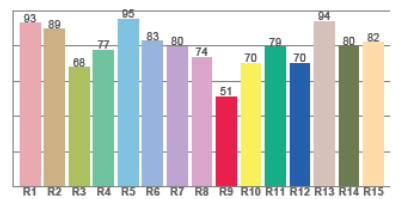
**Color coordinates**



**Zoom color point**



**CRI R values**



# Photometric Test Report

\*Due to additional product enhancements, an updated version of this report may be available online. Please check [www.adj.com](http://www.adj.com) for the latest revision/update of this report.



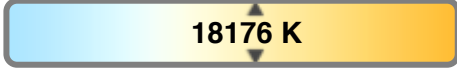
Light Efficiency:



Light Quality:



Color Temperature:



Output: 1055 lm

Peak: 4521 cd

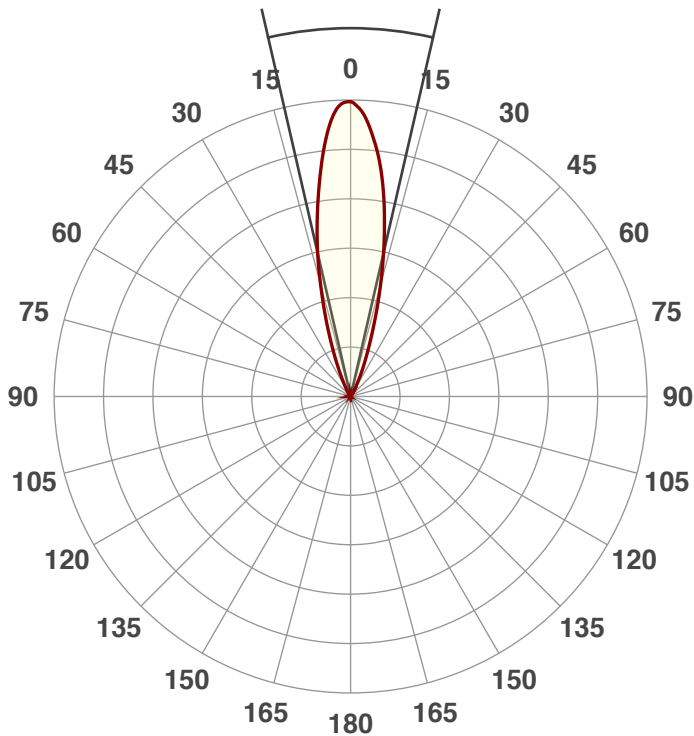
Power: 30.0 W

PF: 0.6



Beam Angle

25.9°



Product Name:

UB 6H

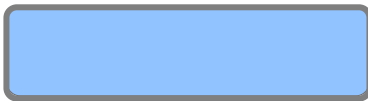
Test:

Full On

Date:

4/20/2018

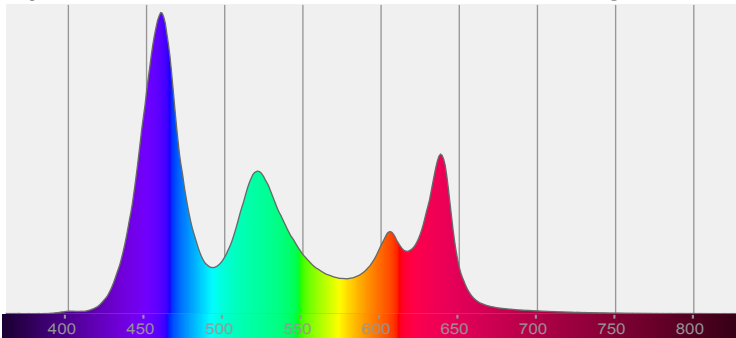
Note:



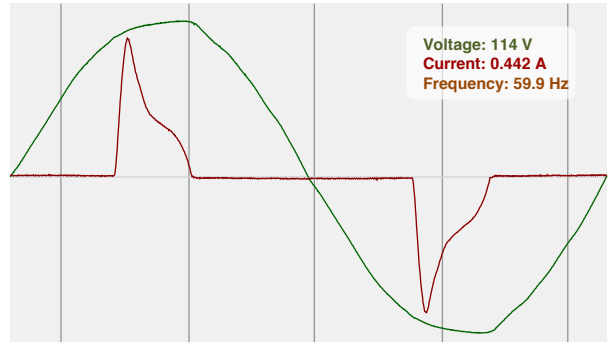
CIE 1931  
x: 0.265  
y: 0.254

Spectra

Dominant Wavelength: 467nm

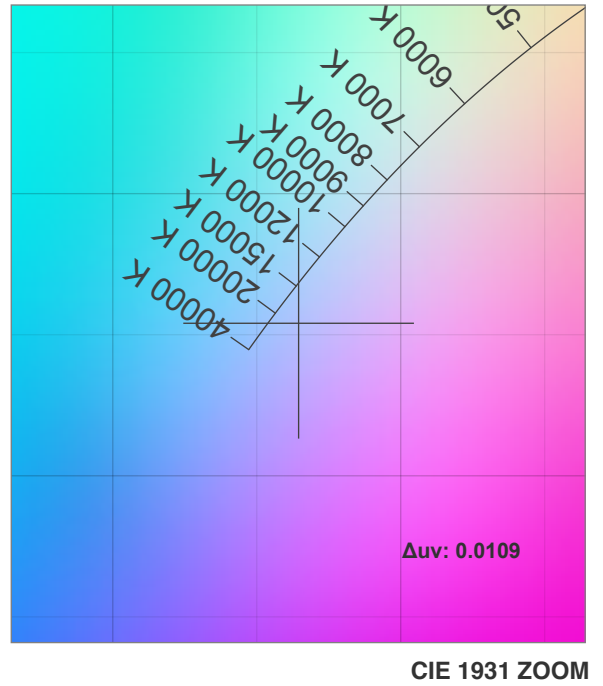
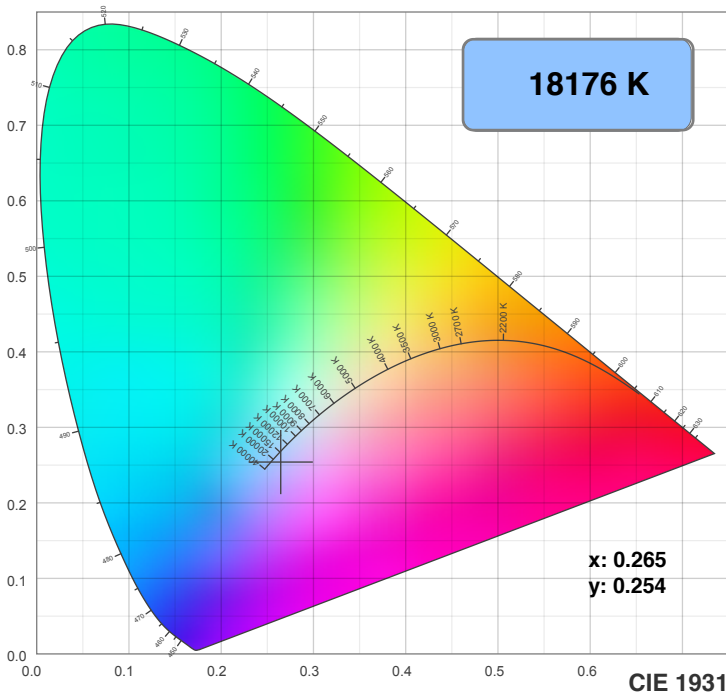


Power

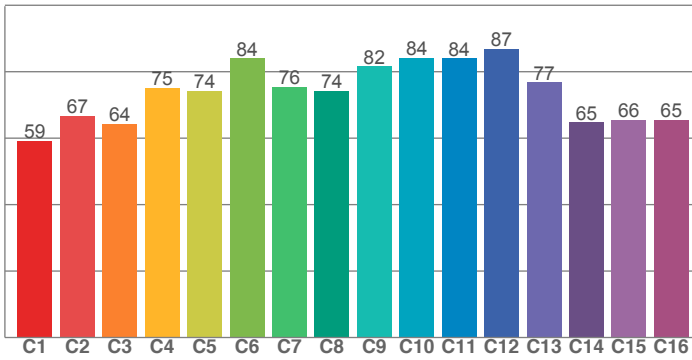


Voltage: 114 V  
Current: 0.442 A  
Frequency: 59.9 Hz

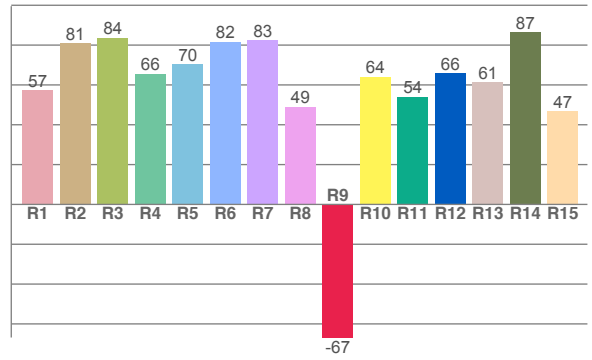
# Color Details



**TM30: 74.6**



**CRI: 71.4 (R1-R8)**



CRI R values, only R1-R8 are used to calculate final CRI value

R1	R2	R3	R4	R5	R6	R7	R8	R9	R10	R11	R12	R13	R14	R15
57.5	80.8	83.6	65.6	70.2	81.7	82.6	49.1	-66.8	64.1	54.0	65.8	61.3	86.6	46.7

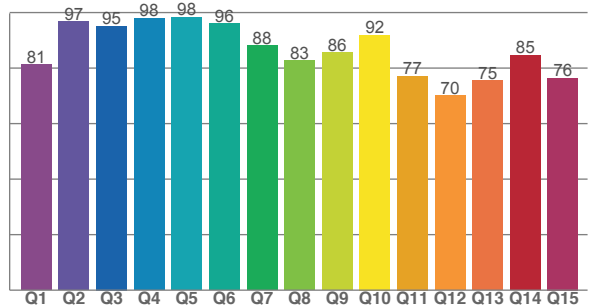
TM30 C values, 16 binned values out of total of 99 C values

C1	C2	C3	C4	C5	C6	C7	C8	C9	C10	C11	C12	C13	C14	C15	C16
59.2	66.8	64.3	75.1	74.3	84.1	75.5	74.2	81.6	84.2	84.0	86.9	76.8	64.8	65.5	65.5

CQS Q values

Q1	Q2	Q3	Q4	Q5	Q6	Q7	Q8	Q9	Q10	Q11	Q12	Q13	Q14	Q15
81.3	96.8	95.1	97.9	98.3	96.0	88.1	82.7	85.7	91.9	77.1	70.1	75.5	84.6	76.5

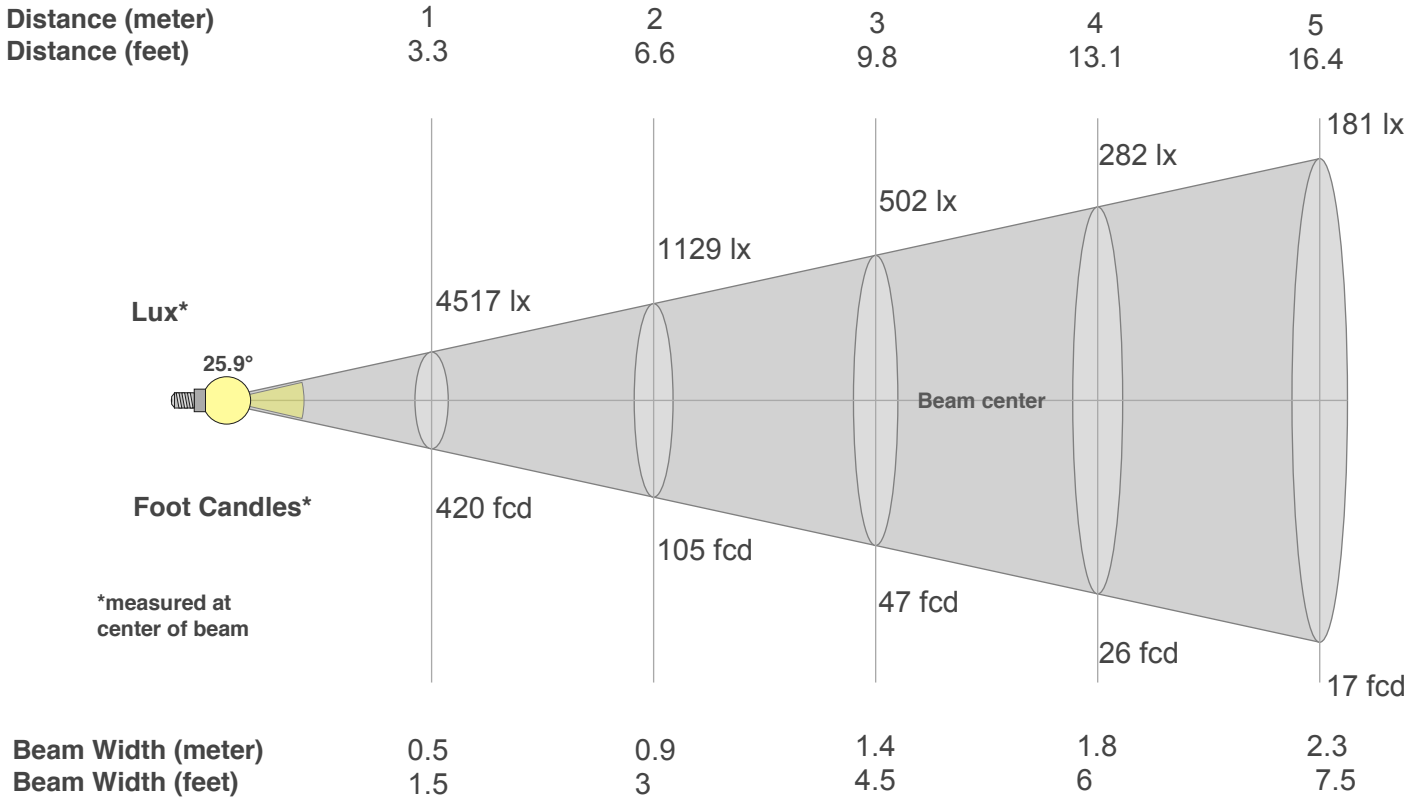
**CQS: 83.8**



## Color Parameters

Color Temperature	Color Rendering Index	Red Component	Color Fidelity	Color Gamut	Color Quality Scale	Color Coordinate CIE 1931	Color Coordinate CIE 1931	Color Coordinate	Color Coordinate	Color Deviation from Black Body
CCT	CRI	CRI R9	TM30 Rf	TM30 Rg	CQS	x	y	u	v	Δuv
18176 K	71.4	-66.8	74.6	108.2	83.8	0.265	0.254	0.192	0.276	0.0109

# Beam Details



## Beam Intensities from 1-20m

m	1	2	3	4	5	6	7	8	9	10	11	12	13	14	15	16	17	18	19	20
ft	3.3	6.6	9.8	13.1	16.4	19.7	23	26.2	29.5	32.8	36.1	39.4	42.7	45.9	49.2	52.5	55.8	59.1	62.3	65.6
lx	4517	1129	502	282	181	125	92	71	56	45	37	31	27	23	20	18	16	14	13	11
fcd	419.6	104.9	46.6	26.2	16.8	11.7	8.6	6.6	5.2	4.2	3.5	2.9	2.5	2.1	1.9	1.6	1.5	1.3	1.2	1

## Intensities in 0° C-plane

0°	2°	4°	6°	8°	10°	12°	14°	16°	18°	20°	22°	24°	26°	28°	30°	32°	34°	36°	38°
4517	4474	4246	3855	3388	2920	2467	2016	1569	1188	862	607	417	283	193	132	91	63	44	35
100%	99%	94%	85%	75%	65%	55%	45%	35%	26%	19%	13%	9%	6%	4%	3%	2%	1%	1%	1%

## Intensities in 90° C-plane

0°	2°	4°	6°	8°	10°	12°	14°	16°	18°	20°	22°	24°	26°	28°	30°	32°	34°	36°	38°
4517	4474	4246	3855	3388	2920	2467	2016	1569	1188	862	607	417	283	193	132	91	63	44	35
100%	99%	94%	85%	75%	65%	55%	45%	35%	26%	19%	13%	9%	6%	4%	3%	2%	1%	1%	1%

## Intensities in 180° C-plane

0°	2°	4°	6°	8°	10°	12°	14°	16°	18°	20°	22°	24°	26°	28°	30°	32°	34°	36°	38°
4517	4397	4146	3818	3427	2969	2482	2008	1556	1157	840	601	424	277	169	102	67	47	34	28
100%	97%	92%	85%	76%	66%	55%	44%	34%	26%	19%	13%	9%	6%	4%	2%	1%	1%	1%	1%

## Intensities in 270° C-plane

0°	2°	4°	6°	8°	10°	12°	14°	16°	18°	20°	22°	24°	26°	28°	30°	32°	34°	36°	38°
4517	4397	4146	3818	3427	2969	2482	2008	1556	1157	840	601	424	277	169	102	67	47	34	28
100%	97%	92%	85%	76%	66%	55%	44%	34%	26%	19%	13%	9%	6%	4%	2%	1%	1%	1%	1%

Beam Angle 50%	Field Angle 10%	Cutoff Angle 2,5%	Intensity Ratio in 120° Cone	Intensity Ratio in 90° Cone
25.9°	47.2°	60.4°	99.5%	98.7%



Light Efficiency:



Light Quality:



Color Temperature:



Output: 1007 lm

Peak: 4330 cd

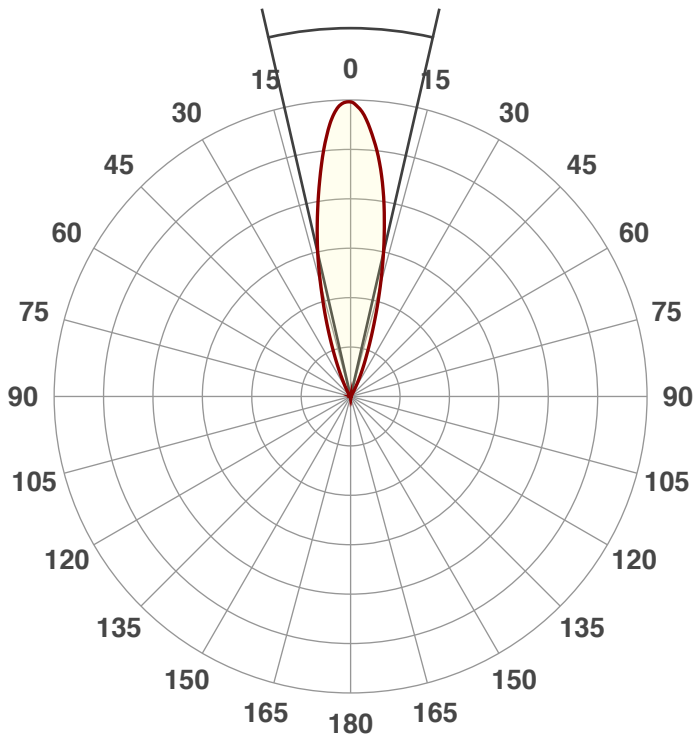
Power: 29.5 W

PF: 0.6



Beam Angle

25.8°



Product Name:

UB 6H

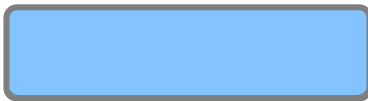
Test:

Full On No UV

Date:

4/20/2018

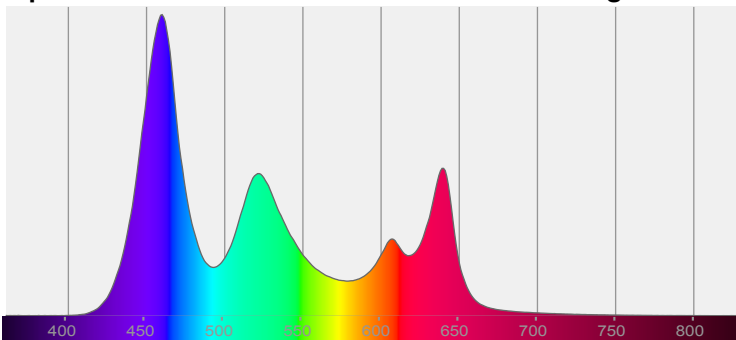
Note:



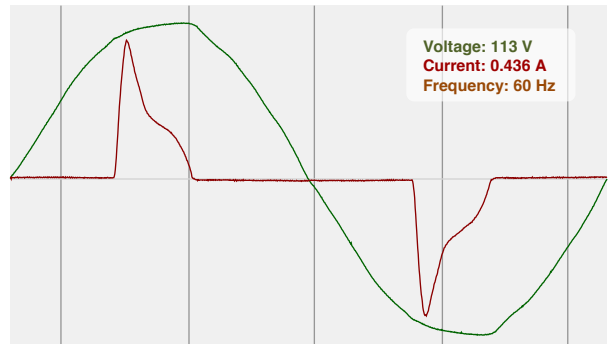
CIE 1931  
x: 0.259  
y: 0.253

Spectra

Dominant Wavelength: 471nm

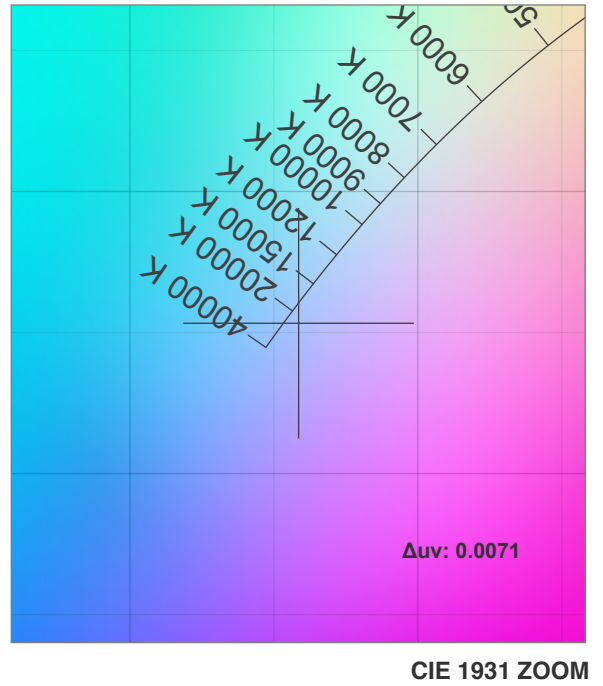
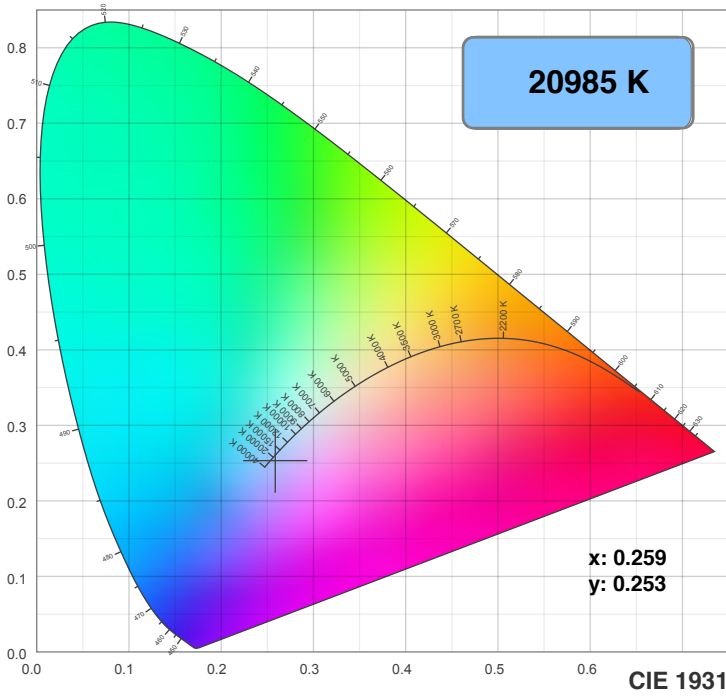


Power

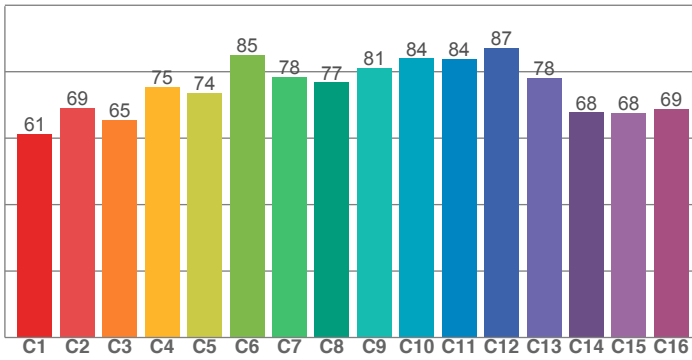


Voltage: 113 V  
Current: 0.436 A  
Frequency: 60 Hz

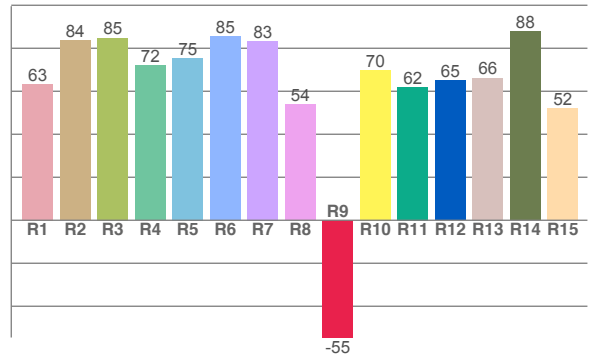
# Color Details



**TM30: 75.6**



**CRI: 75.2 (R1-R8)**



CRI R values, only R1-R8 are used to calculate final CRI value

R1	R2	R3	R4	R5	R6	R7	R8	R9	R10	R11	R12	R13	R14	R15
63.3	83.6	84.9	72.0	75.4	85.4	83.4	53.9	-54.5	69.8	62.0	64.9	66.3	87.8	52.0

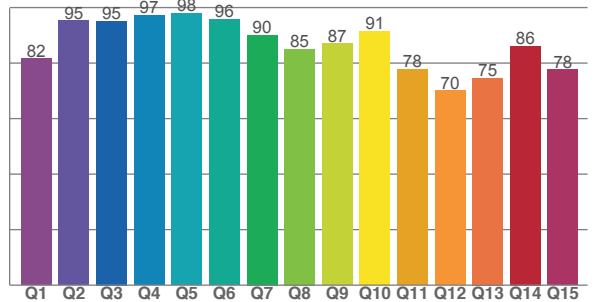
TM30 C values, 16 binned values out of total of 99 C values

C1	C2	C3	C4	C5	C6	C7	C8	C9	C10	C11	C12	C13	C14	C15	C16
61.3	69.1	65.4	75.5	73.7	85.2	78.5	76.8	81.2	84.0	83.9	87.1	78.1	67.8	67.6	68.8

CQS Q values

Q1	Q2	Q3	Q4	Q5	Q6	Q7	Q8	Q9	Q10	Q11	Q12	Q13	Q14	Q15
81.7	95.4	95.2	97.3	98.0	95.8	90.1	85.0	87.0	91.4	77.8	70.1	74.6	86.1	77.6

**CQS: 84.3**



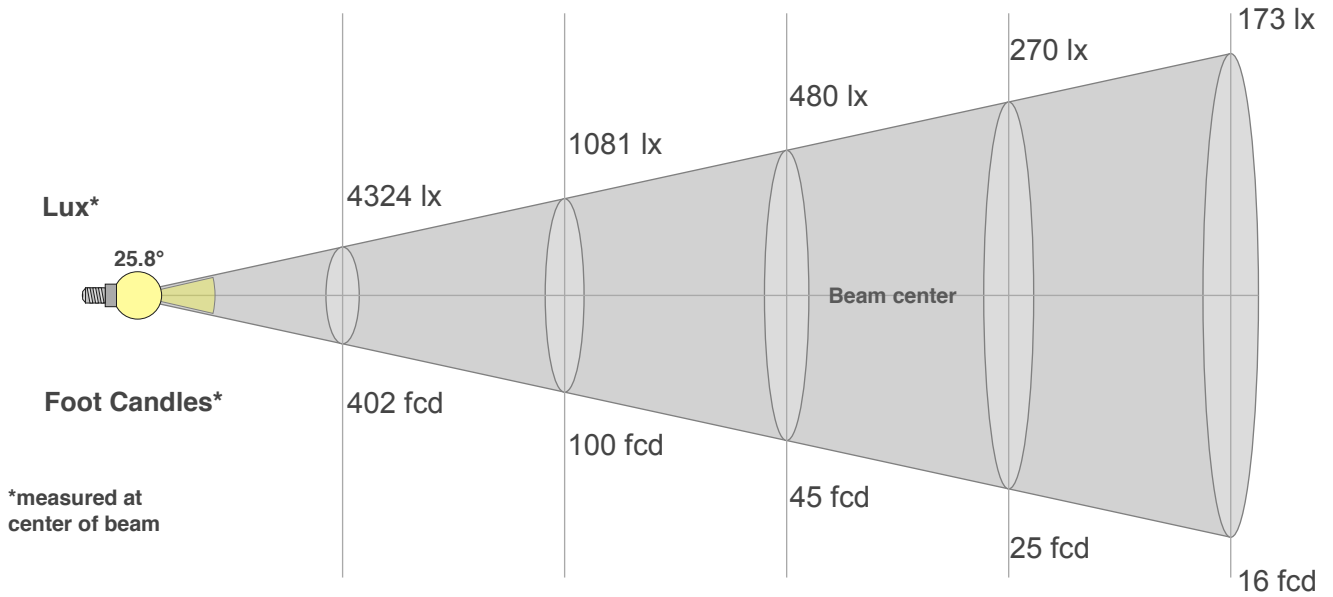
## Color Parameters

Color Temperature	Color Rendering Index	Red Component	Color Fidelity	Color Gamut	Color Quality Scale	Color Coordinate CIE 1931	Color Coordinate CIE 1931	Color Coordinate	Color Coordinate	Color Deviation from Black Body
CCT	CRI	CRI R9	TM30 Rf	TM30 Rg	CQS	x	y	u	v	$\Delta uv$
20985 K	75.2	-54.5	75.6	106.5	84.3	0.259	0.253	0.187	0.275	0.0071

# Beam Details

Distance (meter)  
Distance (feet)

1 2 3 4 5  
3.3 6.6 9.8 13.1 16.4



Beam Width (meter)  
Beam Width (feet)

0.5 0.9 1.4 1.8 2.3  
1.5 3 4.5 6 7.5

## Beam Intensities from 1-20m

m	1	2	3	4	5	6	7	8	9	10	11	12	13	14	15	16	17	18	19	20
ft	3.3	6.6	9.8	13.1	16.4	19.7	23	26.2	29.5	32.8	36.1	39.4	42.7	45.9	49.2	52.5	55.8	59.1	62.3	65.6
lx	4324	1081	480	270	173	120	88	68	53	43	36	30	26	22	19	17	15	13	12	11
fcd	401.7	100.4	44.6	25.1	16.1	11.2	8.2	6.3	5	4	3.3	2.8	2.4	2	1.8	1.6	1.4	1.2	1.1	1

## Intensities in 0° C-plane

0°	2°	4°	6°	8°	10°	12°	14°	16°	18°	20°	22°	24°	26°	28°	30°	32°	34°	36°	38°
4324	4283	4068	3692	3240	2787	2354	1924	1496	1134	824	580	399	270	183	125	86	59	42	32
100%	99%	94%	85%	75%	64%	54%	44%	35%	26%	19%	13%	9%	6%	4%	3%	2%	1%	1%	1%

## Intensities in 90° C-plane

0°	2°	4°	6°	8°	10°	12°	14°	16°	18°	20°	22°	24°	26°	28°	30°	32°	34°	36°	38°
4324	4283	4068	3692	3240	2787	2354	1924	1496	1134	824	580	399	270	183	125	86	59	42	32
100%	99%	94%	85%	75%	64%	54%	44%	35%	26%	19%	13%	9%	6%	4%	3%	2%	1%	1%	1%

## Intensities in 180° C-plane

0°	2°	4°	6°	8°	10°	12°	14°	16°	18°	20°	22°	24°	26°	28°	30°	32°	34°	36°	38°
4324	4211	3967	3651	3273	2834	2368	1914	1482	1101	800	573	403	263	162	98	64	45	33	27
100%	97%	92%	84%	76%	66%	55%	44%	34%	25%	18%	13%	9%	6%	4%	2%	1%	1%	1%	1%

## Intensities in 270° C-plane

0°	2°	4°	6°	8°	10°	12°	14°	16°	18°	20°	22°	24°	26°	28°	30°	32°	34°	36°	38°
4324	4211	3967	3651	3273	2834	2368	1914	1482	1101	800	573	403	263	162	98	64	45	33	27
100%	97%	92%	84%	76%	66%	55%	44%	34%	25%	18%	13%	9%	6%	4%	2%	1%	1%	1%	1%

Beam Angle 50%	Field Angle 10%	Cutoff Angle 2,5%	Intensity Ratio in 120° Cone	Intensity Ratio in 90° Cone
25.8°	47.2°	60.3°	99.5%	98.7%



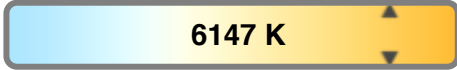
Light Efficiency:



Light Quality:



Color Temperature:



Output: 1081 lm

Peak: 4612 cd

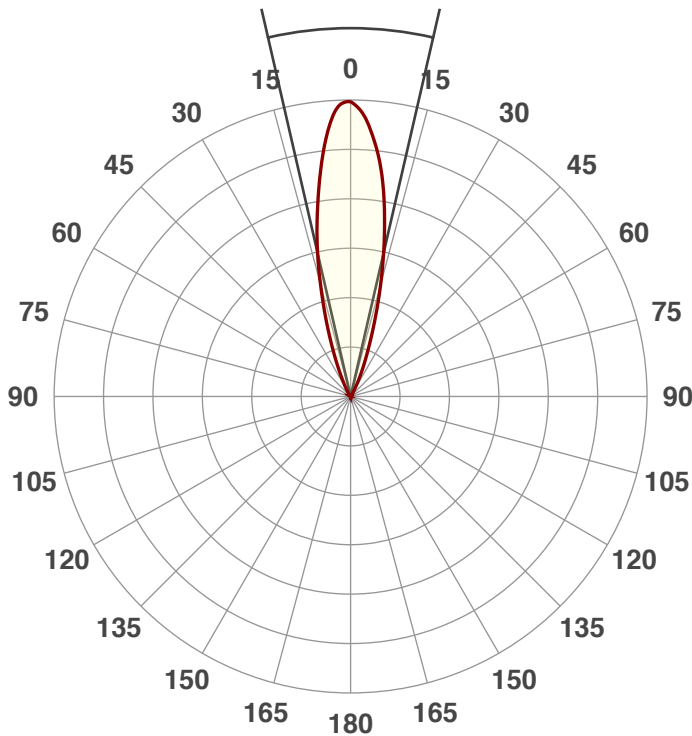
Power: 23.6 W

PF: 0.61



Beam Angle

25.9°



Product Name:

UB 6H

Test:

CRI Value

Date:

4/20/2018

Note:

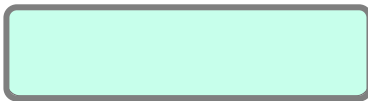
R @ 143

G @ 255

B @ 75

W @ 255

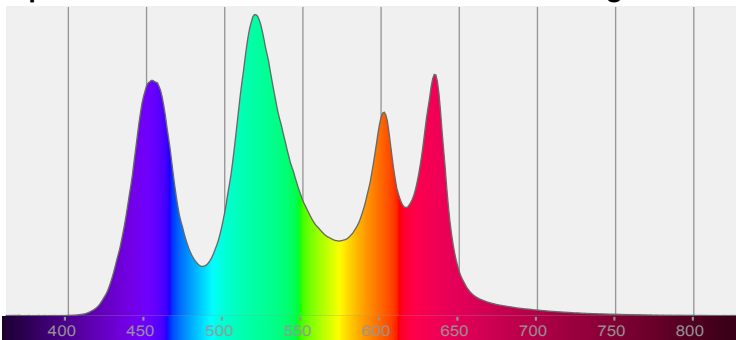
A @ 255



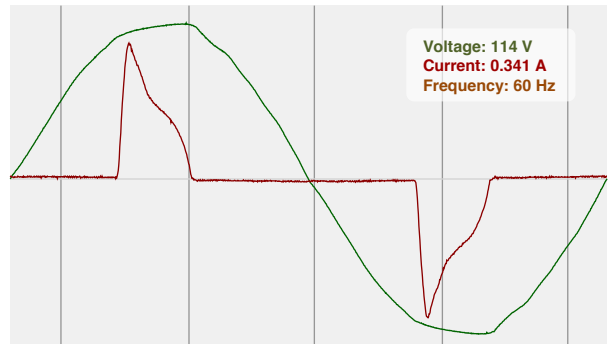
CIE 1931  
x: 0.317  
y: 0.357

Spectra

Dominant Wavelength: 558nm



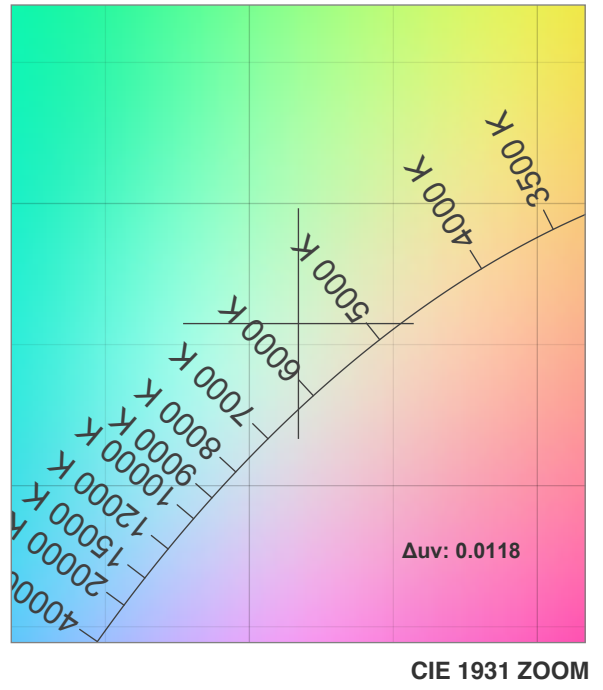
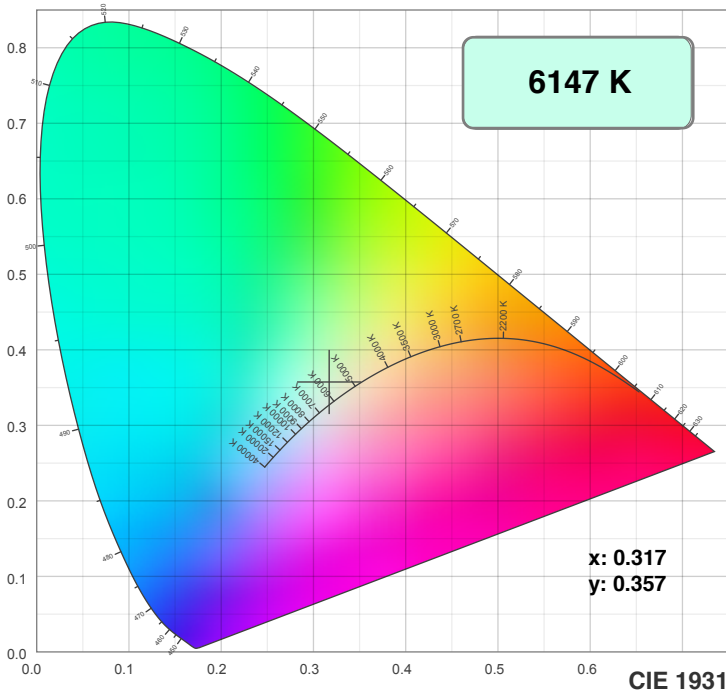
Power



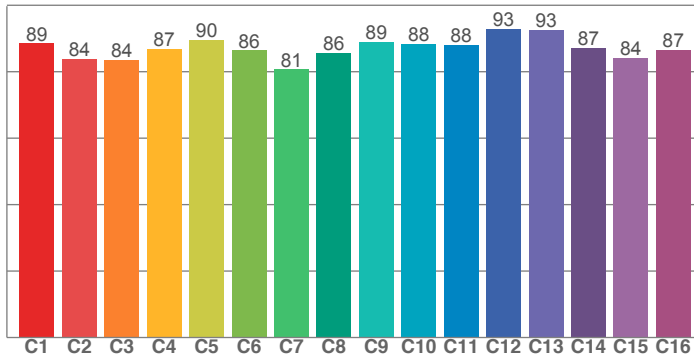
Voltage: 114 V  
Current: 0.341 A  
Frequency: 60 Hz



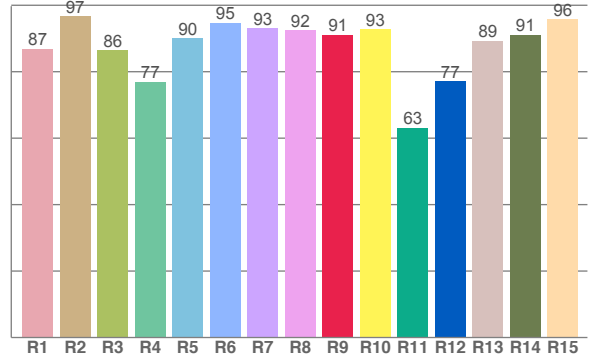
# Color Details



**TM30: 87.1**



**CRI: 89.7 (R1-R8)**



**CRI R values, only R1-R8 are used to calculate final CRI value**

R1	R2	R3	R4	R5	R6	R7	R8	R9	R10	R11	R12	R13	R14	R15
86.9	96.7	86.4	77.0	90.0	94.7	93.0	92.5	91.1	92.7	63.2	77.1	89.3	91.2	95.8

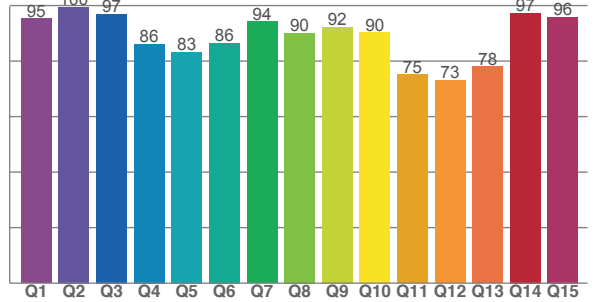
**TM30 C values, 16 binned values out of total of 99 C values**

C1	C2	C3	C4	C5	C6	C7	C8	C9	C10	C11	C12	C13	C14	C15	C16
88.5	83.9	83.6	86.9	89.6	86.5	80.7	85.6	89.1	88.5	88.0	93.0	92.6	87.1	84.2	86.6

**CQS Q values**

Q1	Q2	Q3	Q4	Q5	Q6	Q7	Q8	Q9	Q10	Q11	Q12	Q13	Q14	Q15
95.3	99.5	97.0	86.2	83.3	86.5	94.3	90.1	92.2	90.3	75.0	73.1	78.0	97.4	95.8

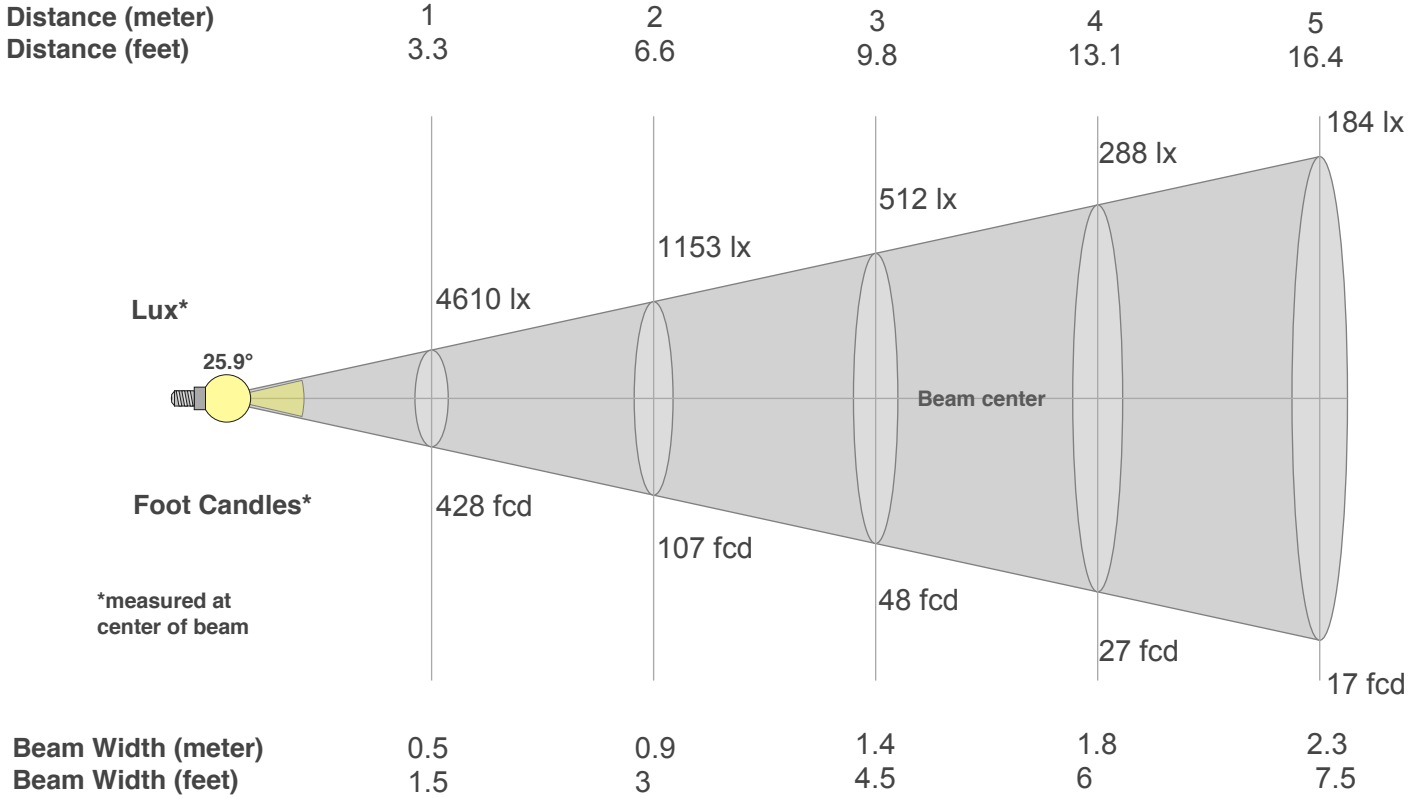
**CQS: 86.3**



## Color Parameters

Color Temperature	Color Rendering Index	Red Component	Color Fidelity	Color Gamut	Color Quality Scale	Color Coordinate CIE 1931	Color Coordinate CIE 1931	Color Coordinate	Color Coordinate	Color Deviation from Black Body
CCT	CRI	CRI R9	TM30 Rf	TM30 Rg	CQS	x	y	u	v	Δuv
6147 K	89.7	91.1	87.1	105.5	86.3	0.317	0.357	0.191	0.322	0.0118

# Beam Details



## Beam Intensities from 1-20m

m	1	2	3	4	5	6	7	8	9	10	11	12	13	14	15	16	17	18	19	20
ft	3.3	6.6	9.8	13.1	16.4	19.7	23	26.2	29.5	32.8	36.1	39.4	42.7	45.9	49.2	52.5	55.8	59.1	62.3	65.6
lx	4610	1153	512	288	184	128	94	72	57	46	38	32	27	24	20	18	16	14	13	12
fcd	428.3	107.1	47.6	26.8	17.1	11.9	8.7	6.7	5.3	4.3	3.5	3	2.5	2.2	1.9	1.7	1.5	1.3	1.2	1.1

## Intensities in 0° C-plane

0°	2°	4°	6°	8°	10°	12°	14°	16°	18°	20°	22°	24°	26°	28°	30°	32°	34°	36°	38°
4610	4570	4332	3933	3461	2982	2525	2062	1604	1214	883	623	427	288	197	135	93	65	46	36
100%	99%	94%	85%	75%	65%	55%	45%	35%	26%	19%	14%	9%	6%	4%	3%	2%	1%	1%	1%

## Intensities in 90° C-plane

0°	2°	4°	6°	8°	10°	12°	14°	16°	18°	20°	22°	24°	26°	28°	30°	32°	34°	36°	38°
4610	4570	4332	3933	3461	2982	2525	2062	1604	1214	883	623	427	288	197	135	93	65	46	36
100%	99%	94%	85%	75%	65%	55%	45%	35%	26%	19%	14%	9%	6%	4%	3%	2%	1%	1%	1%

## Intensities in 180° C-plane

0°	2°	4°	6°	8°	10°	12°	14°	16°	18°	20°	22°	24°	26°	28°	30°	32°	34°	36°	38°
4610	4477	4224	3895	3504	3036	2539	2052	1592	1184	857	610	426	275	166	103	68	48	35	28
100%	97%	92%	84%	76%	66%	55%	45%	35%	26%	19%	13%	9%	6%	4%	2%	1%	1%	1%	1%

## Intensities in 270° C-plane

0°	2°	4°	6°	8°	10°	12°	14°	16°	18°	20°	22°	24°	26°	28°	30°	32°	34°	36°	38°
4610	4477	4224	3895	3504	3036	2539	2052	1592	1184	857	610	426	275	166	103	68	48	35	28
100%	97%	92%	84%	76%	66%	55%	45%	35%	26%	19%	13%	9%	6%	4%	2%	1%	1%	1%	1%

Beam Angle 50%	Field Angle 10%	Cutoff Angle 2,5%	Intensity Ratio in 120° Cone	Intensity Ratio in 90° Cone
25.9°	47.2°	60.4°	99.3%	98.3%



**Light Efficiency:**

**29 Lumen/Watt**

**Dominant Wavelength:**

**622nm**

**Output:**

**181lm**

**Power:**

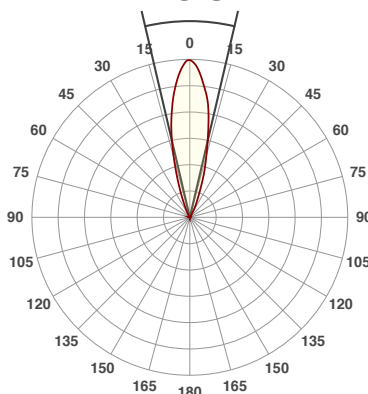
**6.3W**

**Peak:**

**761cd**

**Beam Angle**

**26.3°**



**Product Name:**

**UB 6H**

**Test:**

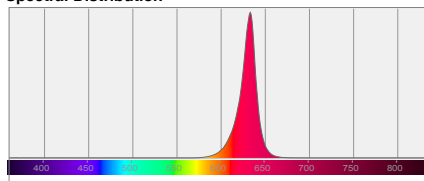
**Red**

**Date:**

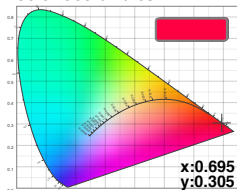
**4/20/2018**

**Note:**

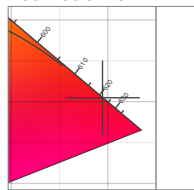
**Spectral Distribution**



**Color Coordinates**



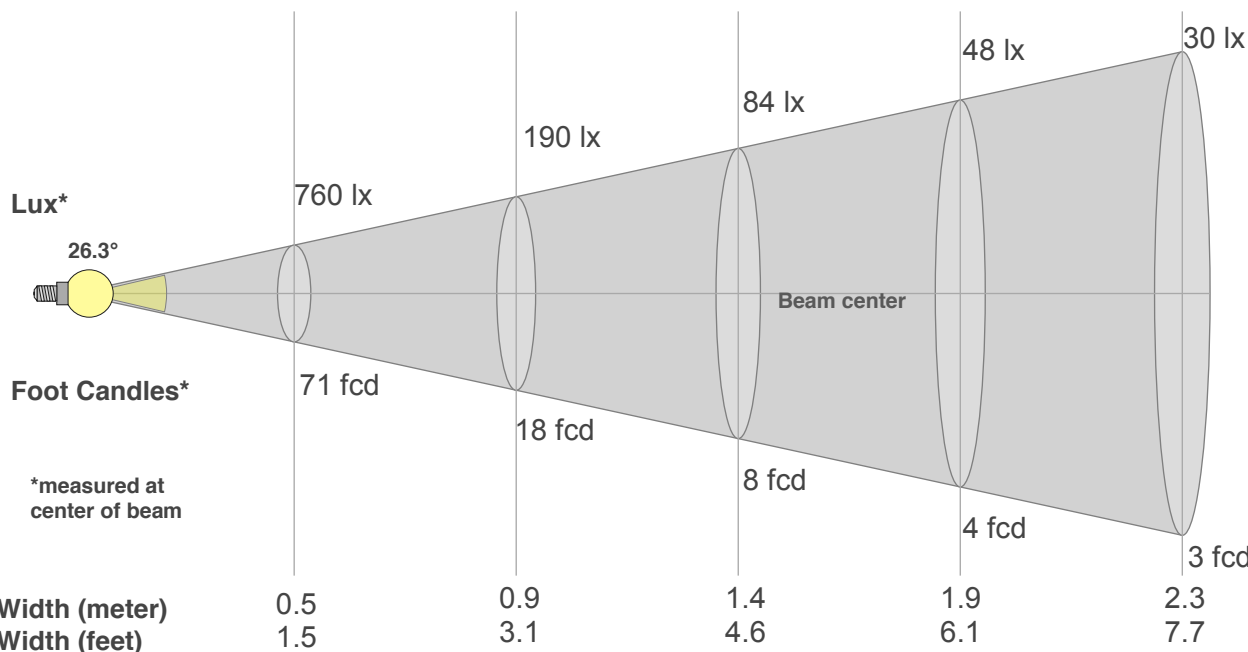
**Zoom Color Point**



**Distance (meter)**

**Distance (feet)**

1 3.3      2 6.6      3 9.8      4 13.1      5 16.4



Beam Angle 50%	Field Angle 10%	Cutoff Angle 2,5%	Intensity Ratio in 120° Cone	Intensity Ratio in 90° Cone
26.3°	47.3°	60.2°	99.3%	98.5%

**Beam Intensities from 1-20m**

m	1	2	3	4	5	6	7	8	9	10	11	12	13	14	15	16	17	18	19	20
ft	3.3	6.6	9.8	13.1	16.4	19.7	23	26.2	29.5	32.8	36.1	39.4	42.7	45.9	49.2	52.5	55.8	59.1	62.3	65.6
lx	760	190	84	48	30	21	16	12	9	8	6	5	4	4	3	3	3	2	2	2
fcd	70.7	17.7	7.9	4.4	2.8	2	1.4	1.1	0.9	0.7	0.6	0.5	0.4	0.4	0.3	0.3	0.2	0.2	0.2	0.2



**Light Efficiency:**

**61 Lumen/Watt**

**Dominant Wavelength:**

**525nm**

**Output:**

**484lm**

**Power:**

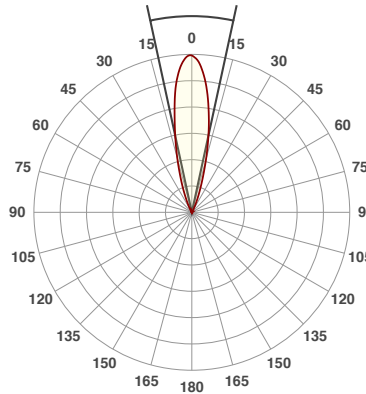
**8.0W**

**Peak:**

**2271cd**

**Beam Angle**

**24.5°**



**Product Name:**

**UB 6H**

**Test:**

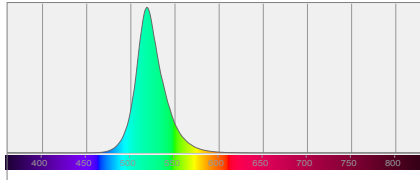
**Green**

**Date:**

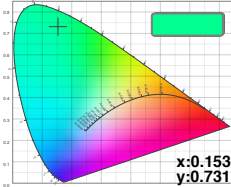
**4/20/2018**

**Note:**

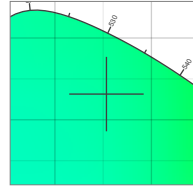
**Spectral Distribution**



**Color Coordinates**

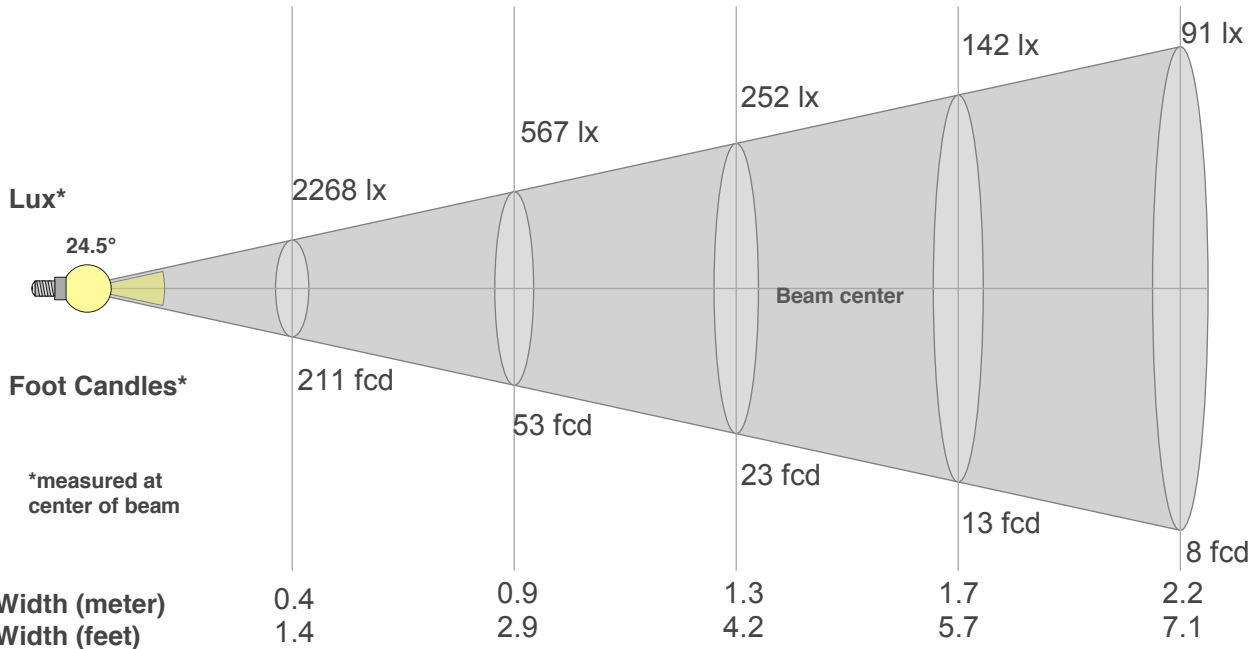


**Zoom Color Point**



**Distance (meter)**  
**Distance (feet)**

1                      2                      3                      4                      5  
3.3                      6.6                      9.8                      13.1                      16.4



Beam Angle 50%	Field Angle 10%	Cutoff Angle 2,5%	Intensity Ratio in 120° Cone	Intensity Ratio in 90° Cone
24.5°	44.8°	57.7°	99.3%	98.5%

**Beam Intensities from 1-20m**

m	1	2	3	4	5	6	7	8	9	10	11	12	13	14	15	16	17	18	19	20
ft	3.3	6.6	9.8	13.1	16.4	19.7	23	26.2	29.5	32.8	36.1	39.4	42.7	45.9	49.2	52.5	55.8	59.1	62.3	65.6
lx	2268	567	252	142	91	63	46	35	28	23	19	16	13	12	10	9	8	7	6	6
fcd	210.7	52.7	23.4	13.2	8.4	5.9	4.3	3.3	2.6	2.1	1.7	1.5	1.2	1.1	0.9	0.8	0.7	0.7	0.6	0.5



**Light Efficiency:**

**10 Lumen/Watt**

**Dominant Wavelength:**

**462nm**

**Output:**

**88.0lm**

**Power:**

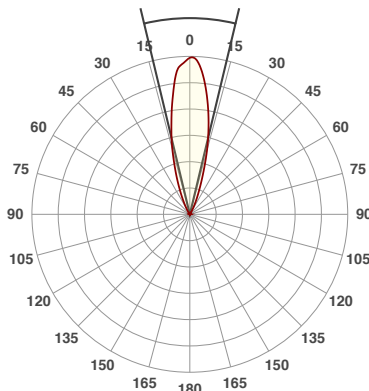
**8.7W**

**Peak:**

**344cd**

**Beam Angle**

**26.9°**



**Product Name:**

**UB 6H**

**Test:**

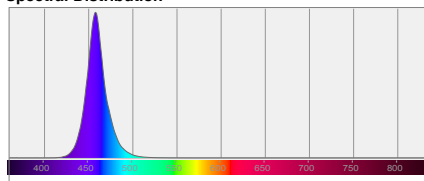
**Blue**

**Date:**

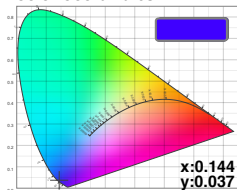
**4/20/2018**

**Note:**

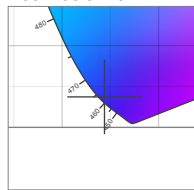
**Spectral Distribution**



**Color Coordinates**



**Zoom Color Point**



**Distance (meter)**

**1**

**2**

**3**

**4**

**5**

**Distance (feet)**

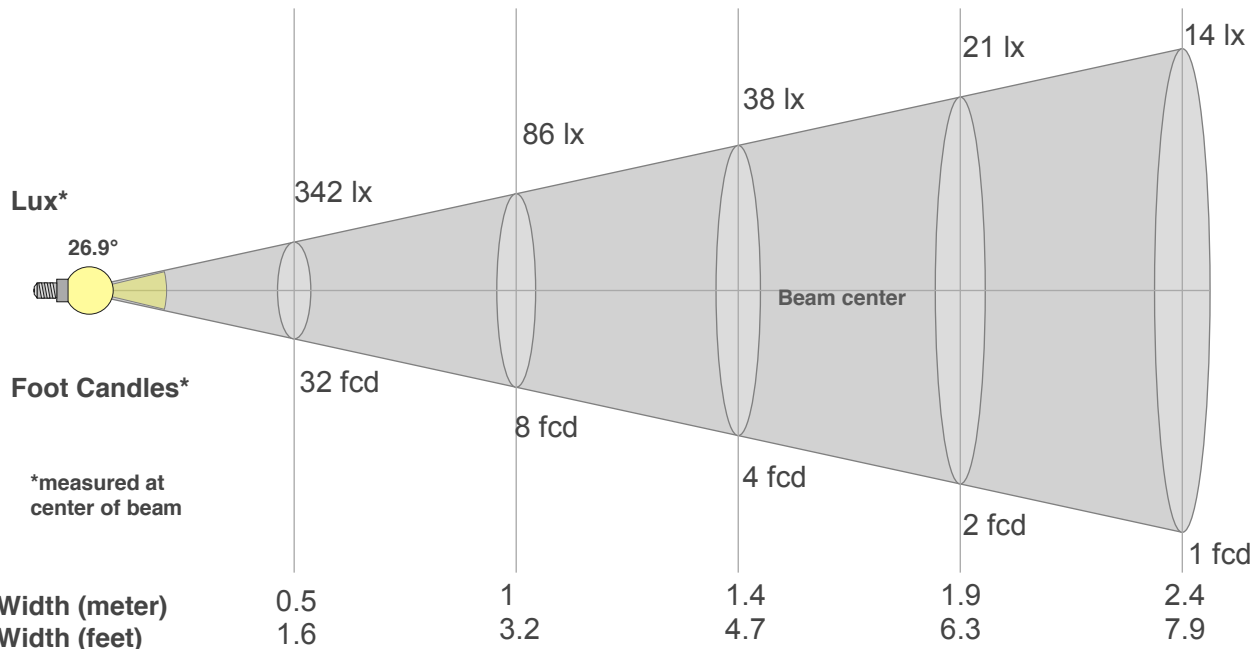
**3.3**

**6.6**

**9.8**

**13.1**

**16.4**



Beam Angle 50%	Field Angle 10%	Cutoff Angle 2,5%	Intensity Ratio in 120° Cone	Intensity Ratio in 90° Cone
26.9°	49.6°	63.3°	99.1%	98.2%

**Beam Intensities from 1-20m**

m	1	2	3	4	5	6	7	8	9	10	11	12	13	14	15	16	17	18	19	20
ft	3.3	6.6	9.8	13.1	16.4	19.7	23	26.2	29.5	32.8	36.1	39.4	42.7	45.9	49.2	52.5	55.8	59.1	62.3	65.6
lx	342	86	38	21	14	10	7	5	4	3	3	2	2	2	2	1	1	1	1	1
fcd	31.8	8	3.5	2	1.3	0.9	0.6	0.5	0.4	0.3	0.3	0.2	0.2	0.2	0.1	0.1	0.1	0.1	0.1	0.1

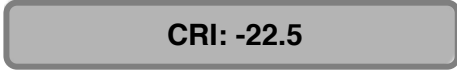


Light Efficiency:



Output: 196 lm

Light Quality:



Peak: 829 cd

Color Temperature:



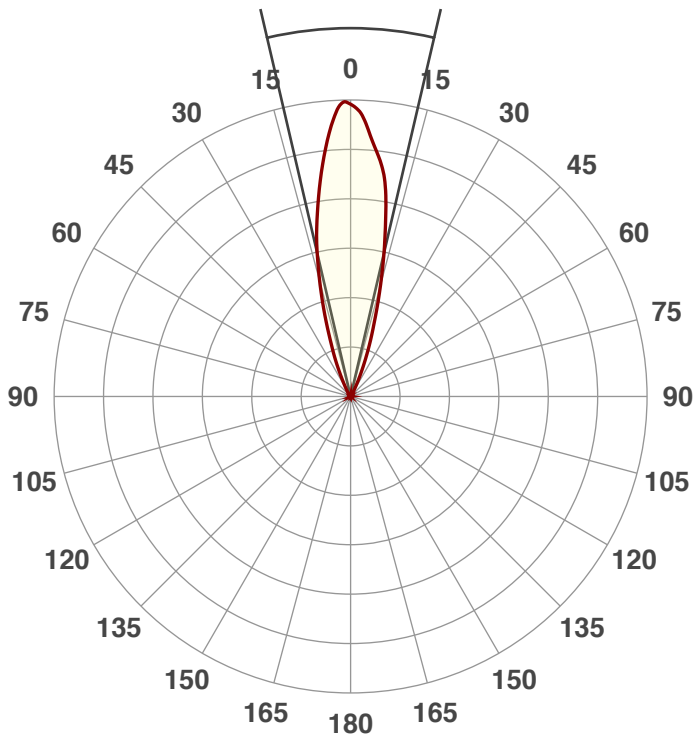
Power: 6.5 W

PF: 0.54



Beam Angle

26.2°



Product Name:

UB 6H

Test:

Amber

Date:

4/20/2018

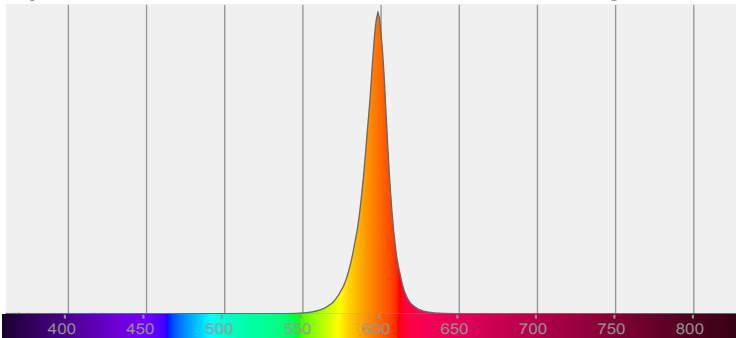
Note:



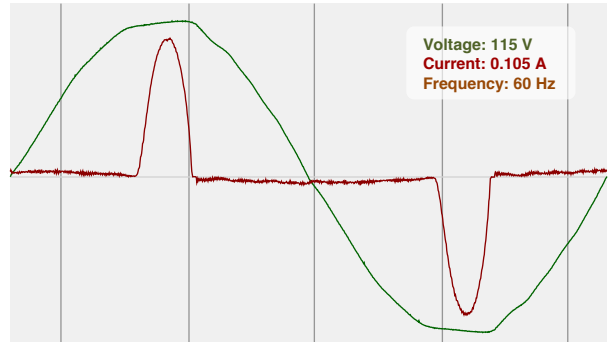
CIE 1931  
x: 0.600  
y: 0.400

Spectra

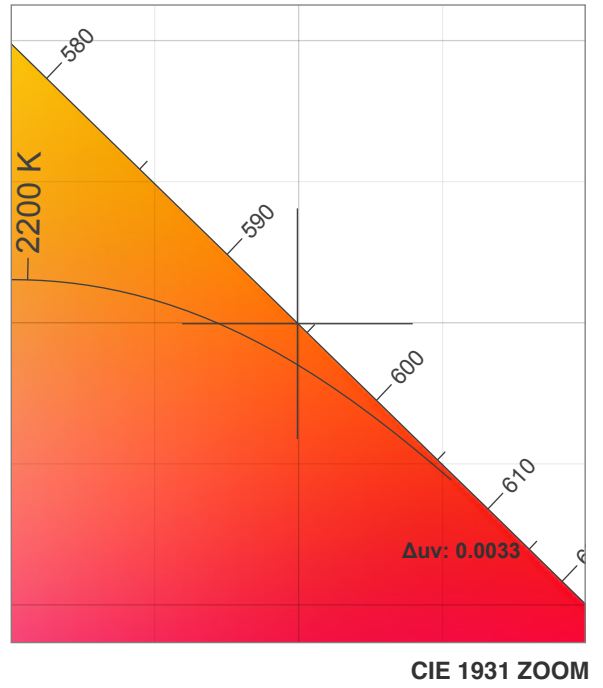
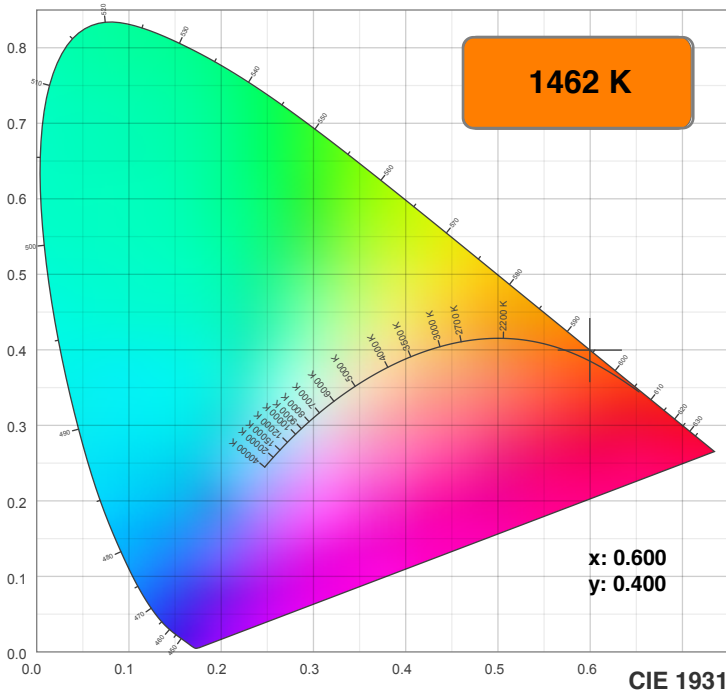
Dominant Wavelength: 594nm



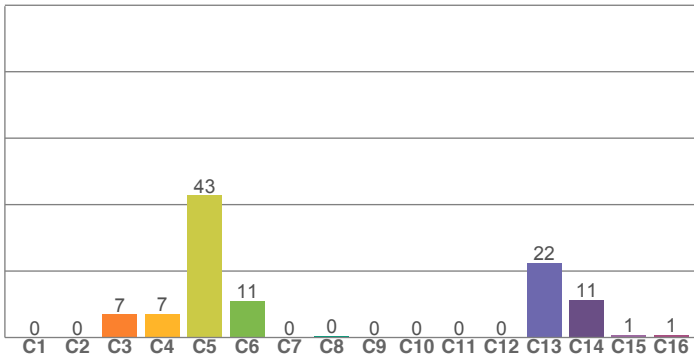
Power



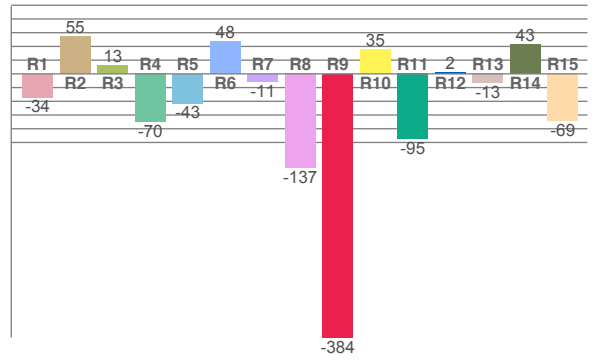
# Color Details



TM30: 0.4



CRI: -22.5 (R1-R8)



CRI R values, only R1-R8 are used to calculate final CRI value

R1	R2	R3	R4	R5	R6	R7	R8	R9	R10	R11	R12	R13	R14	R15
-34.1	54.9	12.5	-70.3	-42.7	48.0	-11.1	-137.2	-384.3	35.1	-94.9	1.8	-13.4	43.4	-68.8

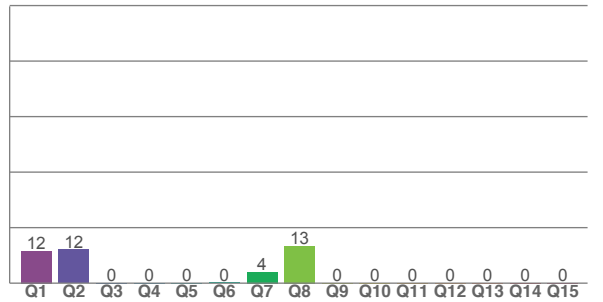
TM30 C values, 16 binned values out of total of 99 C values

C1	C2	C3	C4	C5	C6	C7	C8	C9	C10	C11	C12	C13	C14	C15	C16
0.0	0.0	6.9	7.0	42.7	11.0	0.1	0.5	0.1	0.0	0.1	0.0	22.4	11.4	0.8	0.8

CQS Q values

Q1	Q2	Q3	Q4	Q5	Q6	Q7	Q8	Q9	Q10	Q11	Q12	Q13	Q14	Q15
11.6	12.1	0.0	0.0	0.1	0.3	4.0	13.4	0.1	0.0	0.0	0.0	0.0	0.0	0.1

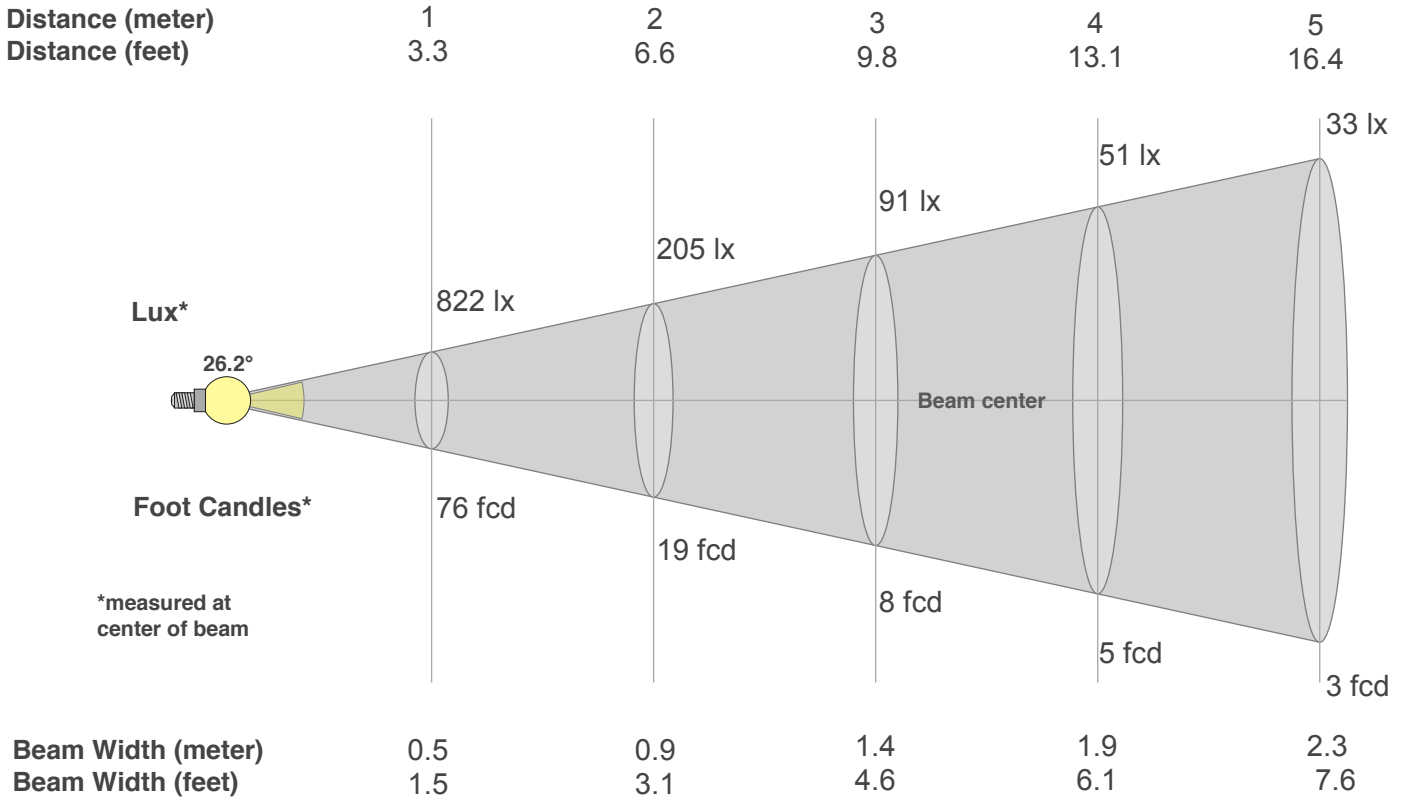
CQS: 0.0



## Color Parameters

Color Temperature	Color Rendering Index	Red Component	Color Fidelity	Color Gamut	Color Quality Scale	Color Coordinate CIE 1931	Color Coordinate CIE 1931	Color Coordinate	Color Coordinate	Color Deviation from Black Body
CCT	CRI	CRI R9	TM30 Rf	TM30 Rg	CQS	x	y	u	v	$\Delta uv$
1462 K	-22.5	-384.3	0.4	1.8	0.0	0.600	0.400	0.364	0.364	0.0033

# Beam Details



## Beam Intensities from 1-20m

m	1	2	3	4	5	6	7	8	9	10	11	12	13	14	15	16	17	18	19	20
ft	3.3	6.6	9.8	13.1	16.4	19.7	23	26.2	29.5	32.8	36.1	39.4	42.7	45.9	49.2	52.5	55.8	59.1	62.3	65.6
lx	822	205	91	51	33	23	17	13	10	8	7	6	5	4	4	3	3	3	2	2
fcd	76.3	19.1	8.5	4.8	3.1	2.1	1.6	1.2	0.9	0.8	0.6	0.5	0.5	0.4	0.3	0.3	0.3	0.2	0.2	0.2

## Intensities in 0° C-plane

0°	2°	4°	6°	8°	10°	12°	14°	16°	18°	20°	22°	24°	26°	28°	30°	32°	34°	36°	38°
822	819	766	692	613	534	459	377	297	225	164	121	84	56	37	26	19	14	11	8
100%	100%	93%	84%	75%	65%	56%	46%	36%	27%	20%	15%	10%	7%	5%	3%	2%	2%	1%	1%

## Intensities in 90° C-plane

0°	2°	4°	6°	8°	10°	12°	14°	16°	18°	20°	22°	24°	26°	28°	30°	32°	34°	36°	38°
822	819	766	692	613	534	459	377	297	225	164	121	84	56	37	26	19	14	11	8
100%	100%	93%	84%	75%	65%	56%	46%	36%	27%	20%	15%	10%	7%	5%	3%	2%	2%	1%	1%

## Intensities in 180° C-plane

0°	2°	4°	6°	8°	10°	12°	14°	16°	18°	20°	22°	24°	26°	28°	30°	32°	34°	36°	38°
822	798	745	694	645	571	467	372	284	210	155	107	69	42	25	16	11	8	6	5
100%	97%	91%	84%	79%	69%	57%	45%	35%	26%	19%	13%	8%	5%	3%	2%	1%	1%	1%	1%

## Intensities in 270° C-plane

0°	2°	4°	6°	8°	10°	12°	14°	16°	18°	20°	22°	24°	26°	28°	30°	32°	34°	36°	38°
822	798	745	694	645	571	467	372	284	210	155	107	69	42	25	16	11	8	6	5
100%	97%	91%	84%	79%	69%	57%	45%	35%	26%	19%	13%	8%	5%	3%	2%	1%	1%	1%	1%

Beam Angle 50%	Field Angle 10%	Cutoff Angle 2,5%	Intensity Ratio in 120° Cone	Intensity Ratio in 90° Cone
26.2°	47.3°	60.2°	99.3%	98.4%





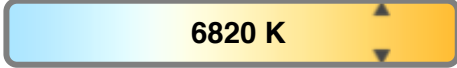
Light Efficiency:



Light Quality:



Color Temperature:



Output: 380 lm

Peak: 1552 cd

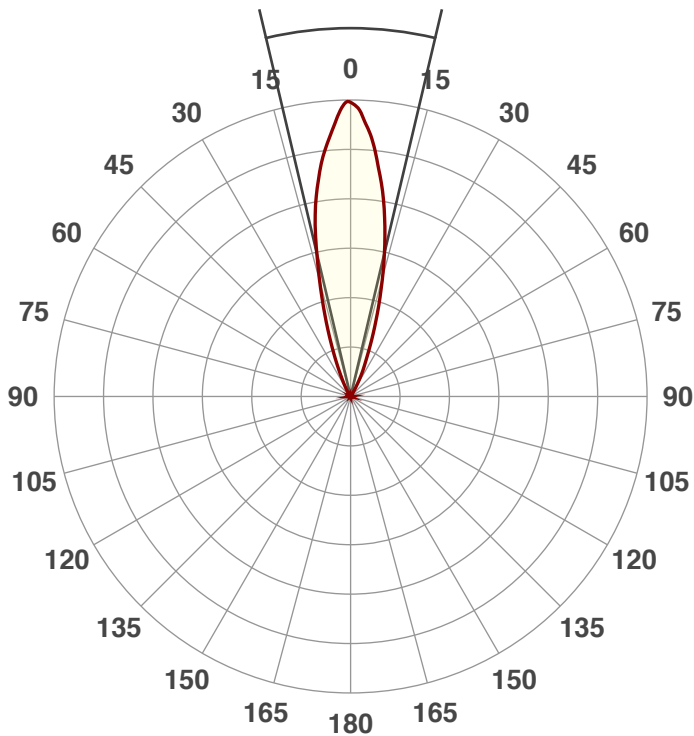
Power: 7.9 W

PF: 0.56



Beam Angle

26.6°



Product Name:

UB 6H

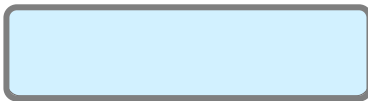
Test:

White

Date:

4/20/2018

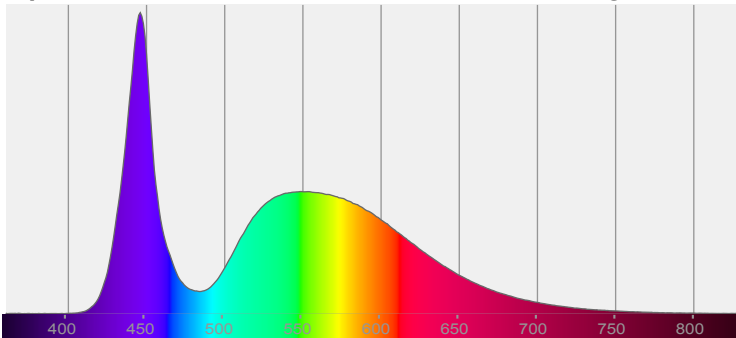
Note:



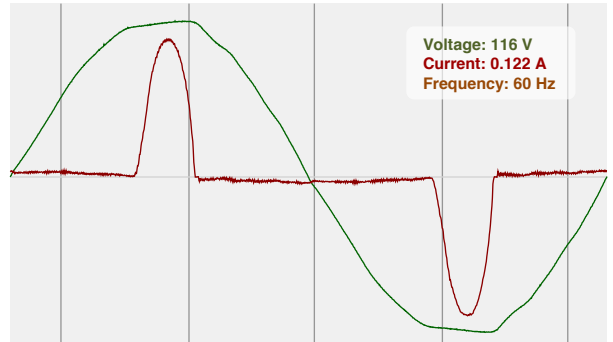
CIE 1931  
x: 0.309  
y: 0.317

Spectra

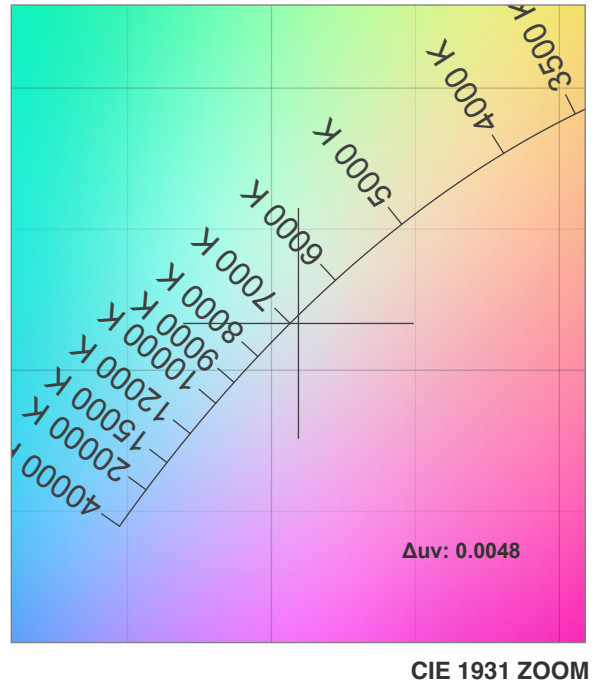
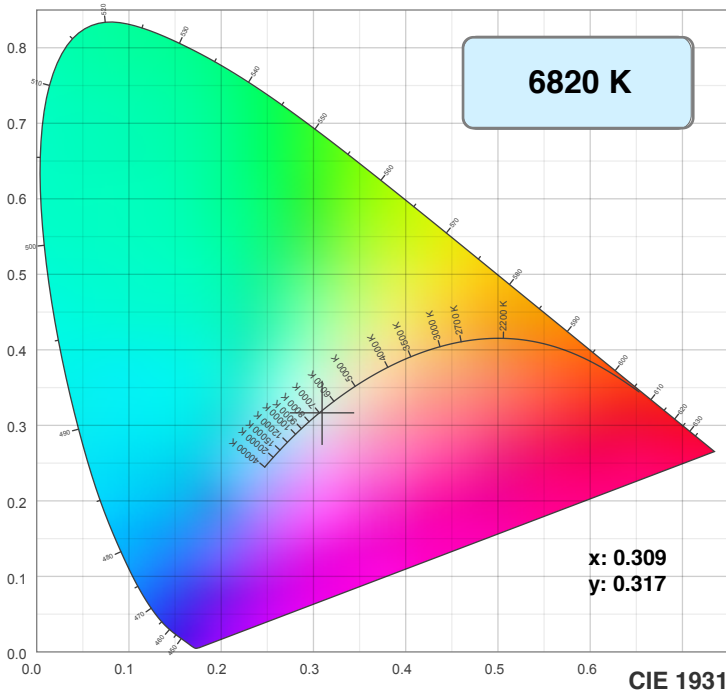
Dominant Wavelength: 360nm



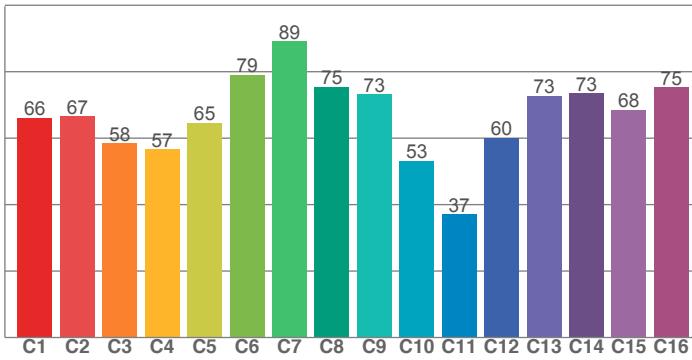
Power



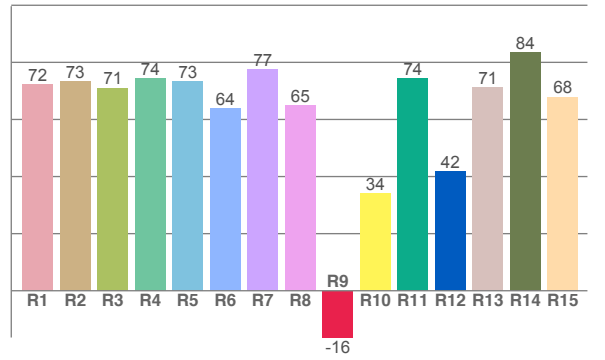
# Color Details



**TM30: 66.3**



**CRI: 71.3 (R1-R8)**



CRI R values, only R1-R8 are used to calculate final CRI value

R1	R2	R3	R4	R5	R6	R7	R8	R9	R10	R11	R12	R13	R14	R15
72.4	73.2	71.1	74.3	73.3	63.9	77.5	65.0	-16.4	34.3	74.3	41.7	71.1	83.5	67.9

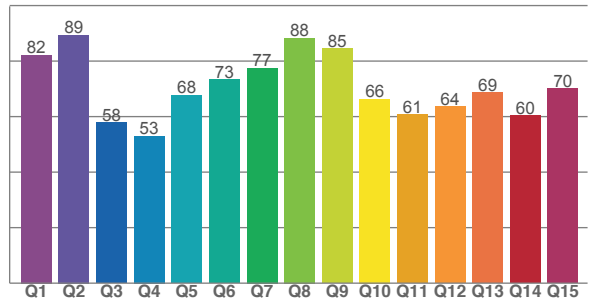
TM30 C values, 16 binned values out of total of 99 C values

C1	C2	C3	C4	C5	C6	C7	C8	C9	C10	C11	C12	C13	C14	C15	C16
66.2	66.6	58.5	56.7	64.7	79.1	89.2	75.5	73.2	53.1	37.1	60.1	72.7	73.5	68.5	75.3

CQS Q values

Q1	Q2	Q3	Q4	Q5	Q6	Q7	Q8	Q9	Q10	Q11	Q12	Q13	Q14	Q15
82.2	89.4	57.9	53.0	67.7	73.3	77.5	88.3	84.5	66.3	60.7	63.7	68.7	60.4	70.1

**CQS: 68.9**



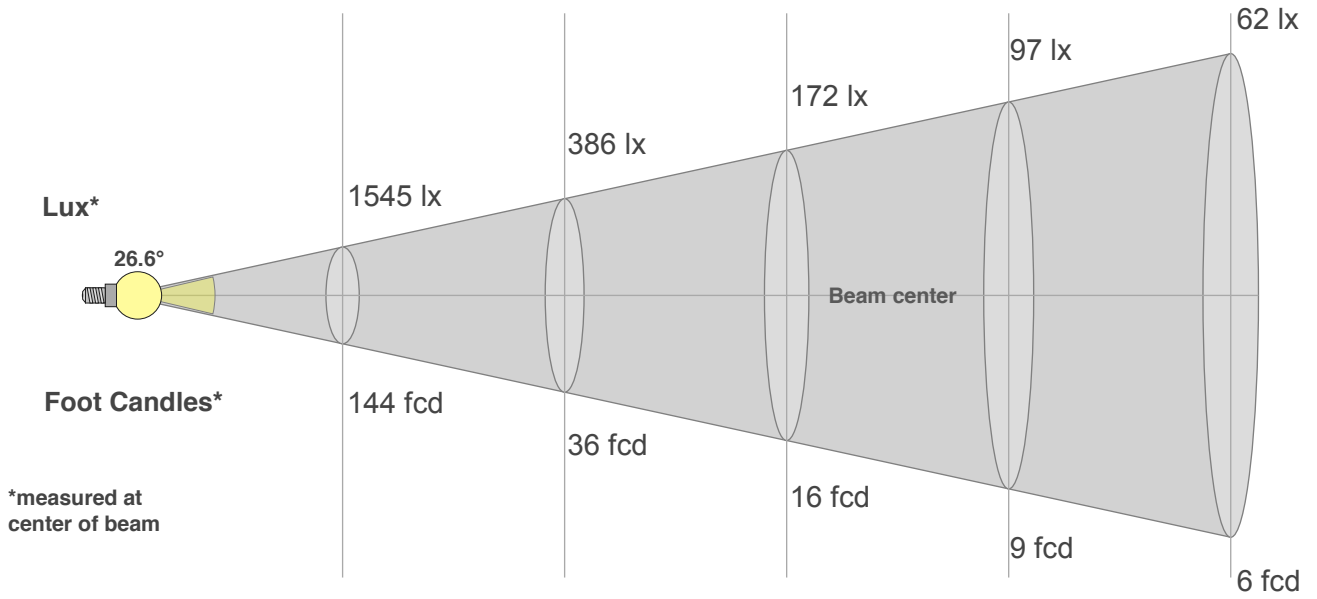
## Color Parameters

Color Temperature	Color Rendering Index	Red Component	Color Fidelity	Color Gamut	Color Quality Scale	Color Coordinate CIE 1931	Color Coordinate CIE 1931	Color Coordinate	Color Coordinate	Color Deviation from Black Body
CCT	CRI	CRI R9	TM30 Rf	TM30 Rg	CQS	x	y	u	v	Δuv
6820 K	71.3	-16.4	66.3	96.8	68.9	0.309	0.317	0.200	0.307	0.0048

# Beam Details

Distance (meter)  
Distance (feet)

1 2 3 4 5  
3.3 6.6 9.8 13.1 16.4



Beam Width (meter)  
Beam Width (feet)

0.5 0.9 1.4 1.9 2.4  
1.6 3.1 4.6 6.2 7.7

## Beam Intensities from 1-20m

m	1	2	3	4	5	6	7	8	9	10	11	12	13	14	15	16	17	18	19	20
ft	3.3	6.6	9.8	13.1	16.4	19.7	23	26.2	29.5	32.8	36.1	39.4	42.7	45.9	49.2	52.5	55.8	59.1	62.3	65.6
lx	1545	386	172	97	62	43	32	24	19	15	13	11	9	8	7	6	5	5	4	4
fcd	143.5	35.9	15.9	9	5.7	4	2.9	2.2	1.8	1.4	1.2	1	0.8	0.7	0.6	0.6	0.5	0.4	0.4	0.4

## Intensities in 0° C-plane

0°	2°	4°	6°	8°	10°	12°	14°	16°	18°	20°	22°	24°	26°	28°	30°	32°	34°	36°	38°
1545	1510	1403	1301	1182	1050	892	713	554	419	305	217	148	102	70	48	33	22	16	12
100%	98%	91%	84%	77%	68%	58%	46%	36%	27%	20%	14%	10%	7%	5%	3%	2%	1%	1%	1%

## Intensities in 90° C-plane

0°	2°	4°	6°	8°	10°	12°	14°	16°	18°	20°	22°	24°	26°	28°	30°	32°	34°	36°	38°
1545	1510	1403	1301	1182	1050	892	713	554	419	305	217	148	102	70	48	33	22	16	12
100%	98%	91%	84%	77%	68%	58%	46%	36%	27%	20%	14%	10%	7%	5%	3%	2%	1%	1%	1%

## Intensities in 180° C-plane

0°	2°	4°	6°	8°	10°	12°	14°	16°	18°	20°	22°	24°	26°	28°	30°	32°	34°	36°	38°
1545	1498	1399	1278	1148	1013	869	723	579	451	339	246	181	134	85	48	29	19	14	11
100%	97%	91%	83%	74%	66%	56%	47%	37%	29%	22%	16%	12%	9%	6%	3%	2%	1%	1%	1%

## Intensities in 270° C-plane

0°	2°	4°	6°	8°	10°	12°	14°	16°	18°	20°	22°	24°	26°	28°	30°	32°	34°	36°	38°
1545	1498	1399	1278	1148	1013	869	723	579	451	339	246	181	134	85	48	29	19	14	11
100%	97%	91%	83%	74%	66%	56%	47%	37%	29%	22%	16%	12%	9%	6%	3%	2%	1%	1%	1%

Beam Angle 50%	Field Angle 10%	Cutoff Angle 2,5%	Intensity Ratio in 120° Cone	Intensity Ratio in 90° Cone
26.6°	48.8°	61.9°	99.5%	98.6%

