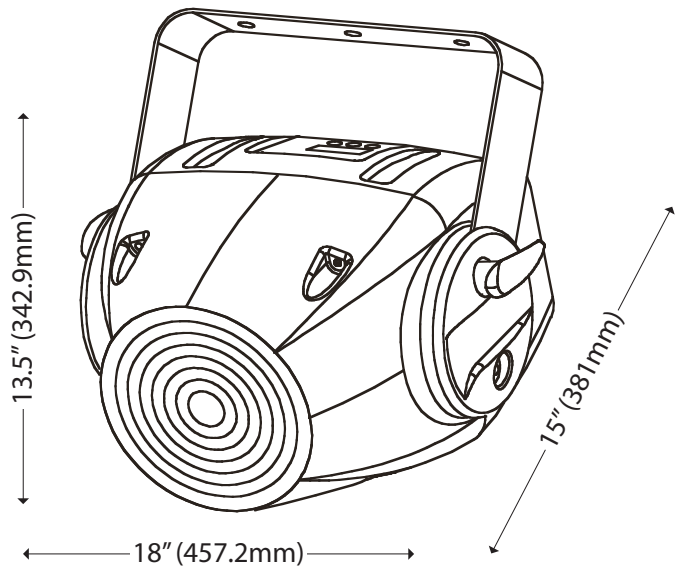


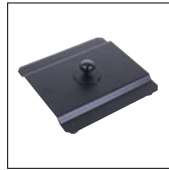
CMY Zoom 250



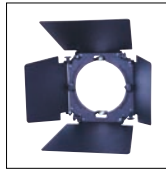
CMY Zoom 250 Dimensions



MOTORIZED ZOOM
8° - 22° Motorized zoom of 150mm Fresnel Lens



CMY Base - Included



Barn Doors - Included

The **CMY Zoom 250** by Elation Professional is a fixed position 250W color mixing wash fixture featuring a **CMY** subtractive color mixing system based on graduated cyan, magenta and yellow dichroic filters as well as using 7 dichroic filters (5 colors, CTB, CTC + white), allowing for continuous, variable speed, color scrolling in both directions.. This unit uses a 250W Philips MSD250/2 discharge lamp providing up to 3,000 hours estimated lamp life. The **CMY Zoom 250** is designed to run in 3 operation modes: **DMX** controlled via 11 channels, stand alone or sound active mode. Control is via 3 pin DMX data first in and out cables. This unit also features remote **DMX** adjustable mechanical dimmer, strobe, motorized zoom allowing for a maximum beam angle of 22° and a minimum beam angle of 8° as well as an effect wheel with frost and 180° beam shaper for added beam control. The unit is rated **IP 20** and is designed for indoor use only. The **CMY Zoom 250** includes a hanging yoke mounting bracket, base plate and safety eyelet for installation.

FEATURES

- 250W CMY color mix fixture
- Switchable color change modes: mode 1: only full colors, mode 2: color-change at every position
- Rainbow-effect with adjustable speed in both directions
- 7 Dichroic Filters: 5 Colors, CTB, CTC + White
- Frost filter for softer beam
- High output luminous-efficiency parabolic mirror
- Glass dichroic reflector
- Mechanical high speed shutter & pulse effect
- 150mm fresnel lens
- 180° beam shaper (flatten and position beam)
- Automated beam from 8°-22° via DMX
- 4 Digit L.E.D. Display
- DMX control via 11 channels
- 3 operation modes: DMX controlled, stand alone or sound activated via built in microphone
- Magnetic ballast

TECHNICAL SPECIFICATIONS

- **DMX Channels:** 11 DMX channels, RDMX - Remote DMX addressing
- **Control:** USITT DMX-512, 3 pin XLR serial input/output
- **Dimmer:** Mechanical dimming 0-100%
- **Zoom:** 8° - 22° motorized zoom
- **Power supply:** 115/208/230/240V AC
- **Power consumption:** 500VA
- **Fuse:** 10A magnetic ballast
- **Lamp:** PHILIPS MSD-250/2
- **Lamp life:** 250W, 8500°K, 2000HR
- **Dimensions:** (LxWxH - without barn doors) 15" x 18" x 13.5" / 381mm x 457.2mm x 342.9mm
- **Weight:** 36 lbs. / 16.3 kg
- **Rigging:** 1 x Hanging Yoke (Bracket)
 - 1 x Base Plate
 - 1 x Safety Eyelet

RDMX
REMOTE DMX ADDRESSING

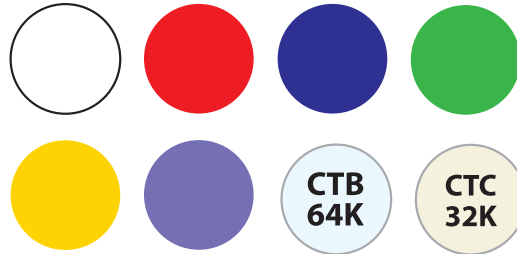
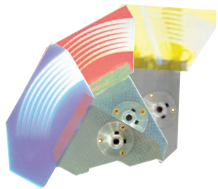
POWERED BY
PHILIPS

CMY Zoom 250



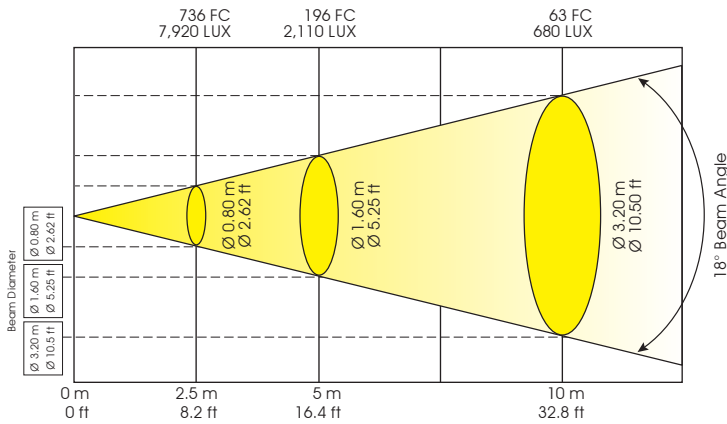
COLORS

- The CMY Color mixing system is based on graduated cyan, magenta and yellow filters.
- A continuous range of colors may be achieved by varying the amount of each filter from 0-100%
- 7 Dichroic Filters: 5 Colors, CTB, CTC + White
- Continuous Color Scroll using color filters
- Rainbow-effect with adjustable speed in both directions

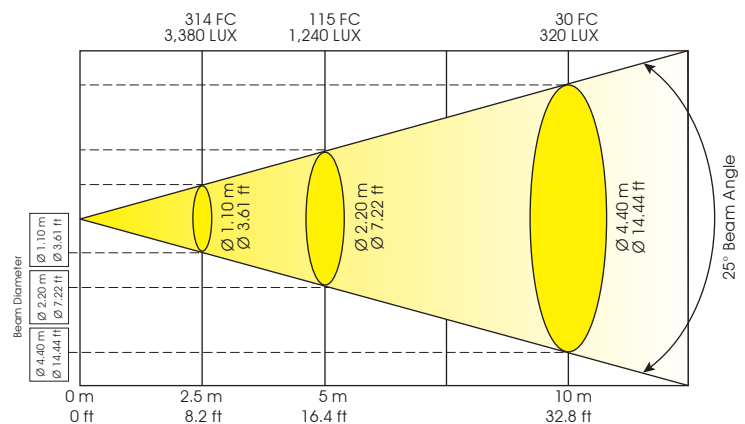


PHOTOMETRICS

CMY Zoom 250
Photometric Beam Angle Data
Minimum Beam Angle 18°
 LUX x 0.0929 = FC



Maximum Beam Angle 25°
 LUX x 0.0929 = FC



DMX TRAITS

- Channel 1 - Color wheel 1
- Channel 2 - Cyan color wheel
- Channel 3 - Magenta color wheel
- Channel 4 - Yellow color wheel
- Channel 5 - Shutter, strobe
- Channel 6 - Dimmer intensity
- Channel 7 - Effect wheel
- Channel 8 - Zoom
- Channel 9 - Colour macros - CMY and colour wheel
- Channel 10 - Speed of CMY and dimmer
- Channel 11 - Lamp on/off, reset, internal programs