

EVLED IMAGE VSC



EVLED Image VSC
Video Panel Control
Sku# EVL581

EVLED IMAGE VSC was designed for use with our EVLED Video panels but is also compatible with most video products on the market today. The EVLED IMAGE VSC is a combined video image processor and scaler with the latest high performance image processing technology. The EVLED IMAGE VSC allows for a DVD player, camera, etc... to be connected directly into it so no computer is needed to play video content. EVLED IMAGE VSC can handle following video without limit, include CVBS, Composite, S-Video (YC), YCbCr, YPbPr, RGBHV, VGA, DVI-D, HDMI, SDI, SD-SDI, HD-SDI.

FEATURES

- . Input: (3) Composite, (1) SVideo, (1) VGA, (1) DVI, (2) HDMI, (2) SDI (HD & SD compatible)
- . Output: DVI and VGA
- . Supports PIP, POP, PBP as well as user-defined pixel-based scale and dual-channel operation
- . Supports out resolution up to 2048 x 1152 x 60Hz
- . Supports keyboard operation
- . Supports serial and TCP/IP remote control

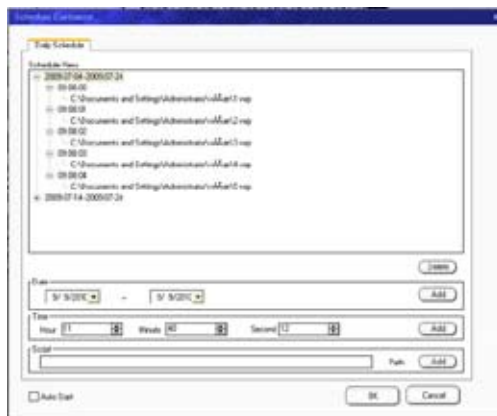
Function

- . Source Switch tow signal groups with alpha key operation
- . PIP for SD with HD and HD with HD
- . POP for SD with HD, HD with HD, video with PC
- . Test pattern generator, schedule, hardware timing, text overlay and logo insert.
- . Alpha Key support

Main Screen



Scheduler Screen



EVLED IMAGE VSC

Composite BNC Input

- . Number of Inputs 3
- . Supported Standards PAL/NTSC
- . Signal Level 1Vpp±3dB (0.7V Video+0.3v Sync) 75ohm
- . Multiplex YCbCr

S-video DIN4 Input

- . Number of Inputs 1
- . Supported Standards PAL/NTSC
- . Signal Level Y:1Vpp±3dB (0.7V Video+0.3v Sync) 75ohm
- . U/V:0.7Vpp±3dB 75ohm

YPbPr BNC Input

- . Number of Inputs BNC*3
- . Supported Standards analog HD input
- . Signal Level Y:1Vpp±3dB (0.7V Video+0.3v Sync) 75ohm
- . Pb/Pr:0.7Vpp±3dB 75ohm

VGA DB15 Input

- . Number of Inputs 1
- . Connector Standard DB15 socket
- . Supported Standards VGA-UXGA
- . Signal Level RGB Hsync Vsync:0 to1Vpp±3dB (0.7V Video+0.3v Sync) 75 ohm
- . Black level:300mV Sync-tip:0V

DVI Input

- . Number of Inputs 1
- . Connector Standard DVI-I socket
- . Supported Standards SMPTE:625/25 PAL, 525/29.97 NTSC, 625/50p PAL, 525/59.94p NTSC, 1080i50, 1080i59.94/60, 720p50 720p59.94/60 VESA:800×600×60Hz,1024×768×60Hz,1280×768×60Hz,1280×1024×60Hz,1600×1200×60Hz,1920×1080×60Hz,1920×1080×50Hz
- . Signal Level TMDs pwl,single pixel input,165MHz bandwidth
- . Standard DVI 1.1

SDI Input

- . Number of Inputs 2
- . Connector BNC
- . Data Rate Range 19.4Mbps~1.5Gbps
- . Supported Standards ITU-R BT.656,ITU-R BT.601,SMPTE 259M, SMPTE 292, SMPTE 297
- . Equalization Belden 1694A 100M HD1.485G,350m SD 270Mbps

SDI Loop-out

- . Number of Loop-Throughs 1
- . Signal Level 800mV±10%
- . DC Offset 0V±0.5V
- . Rise/Fall Time HD1.485Gbps<270 ps;SD 270 Mbps 0.4 ns~1.5ns
- . Overshoot <10%
- . Timing Jitter SD<0.2UI;HD<1.0UI
- . Alignment Jitter <0.2UI

HDMI Input

- . Number of Inputs 2
- . Connector HDMI (standard type A interface)
- . Supported Standards SMPTE:625/25 PAL, 525/29.97 NTSC, 625/50p PAL, 525/59.94p NTSC, 1080i50, 1080i59.94/60, 720p50 720p59.94/60 VESA:800×600×60Hz,1024×768×60Hz,1280×768×60Hz,1280×1024×60Hz,1600×1200×60Hz,1920×1080×60Hz,1920×1080×50Hz
- . Signal Level TMDs pwl,single pixel input,165MHz bandwidth
- . Standard HDMI 1.3

DVI Output

- . Number of Inputs 1
- . Connector Standard DVI-I interface
- . Supported Resolution 800×600×60Hz,1024×768×60Hz,1024×768×75Hz,1280×768×60Hz,1280×1024×60Hz,1440×900×60Hz,1400×1200×60Hz,1600×1200×60Hz,1920×1080×60Hz,1920×1200×60Hz,2048×1152×60Hz
- . Signal Level TMDs pwl,165MHz bandwidth

VGA Output

- . Number of Inputs 1
- . Connector Standard DB15 socket
- . Supported Resolution 800×600×60Hz,1024×768×60Hz,1024×768×75Hz,1280×768×60Hz,1280×1024×60Hz,1440×900×60Hz,1400×1200×60Hz,1600×1200×60Hz,1920×1080×60Hz,1920×1200×60Hz,2048×1152×60Hz,2048×1536×60Hz
- . Signal Level RGB Hsync & Vsync:0 to1Vpp±3dB (0.7V Video+0.3v Sync) 75ohm
- . Black level:300mV Sync-tip:0V

HDMI Output

- . Number of Outputs 1
- . Connector HDMI (standard type A interface)
- . Supported Standards 800×600×60Hz,1024×768×60Hz,1024×768×75Hz,1280×768×60Hz,1280×1024×60Hz,1440×900×60Hz,1400×1200×60Hz,1600×1200×60Hz,1920×1080×60Hz,1920×1200×60Hz,2048×1152×60Hz
- . Signal Level TMDs pwl,165MHz bandwidth

Extras

- . Communication RS232 TCP/IP
- . Power Supply 85-264V 2A IEC-3
- . Working Environment 0°C~45°C
- . Stored Environment 10% to 90%
- . Product Warranty 1year

